



## Bacteria Combating Wall Lining System



## Proud of our heritage



With over 20 years experience and the latest technology, Rearo manufactures and supplies laminate surfaces for every environment

As a family business based in the breathtaking Shetland Islands since 1974, we have been supplying both commercial and residential customers ever since our inception.

With the ever increasing awareness of climate change Rearo are committed to working towards a greener environment.

We Shetlanders have a real sense of belonging and are wonderfully proud of our home. So with our roots firmly planted in such a rural setting, we are perhaps more aware than most of our surroundings and the effects global warming could have on our environment. Which is why these days, where possible, core materials are replaced using 'Moisture Resistant MDF' which is made from sustainable supplies of softwoods grown in managed forests in Ireland.

Rearo guarantee that all of the components we produce conform to the highest levels of quality and when you buy from us, you buy the peace of mind that comes with knowing we're the UK's market leaders. We have worked hard over the last few years to gain accreditation for our ISO Quality Control & Systems (ISO9001), Health & Safety (ISO 18001) and our Environmental Performance (ISO 14001).



To back up our promise, all Protex-antibac™ Panels comes with a 10 year comprehensive guarantee



# Protex-antibac™ Wall Lining System provides one of **the best solutions** available **for hygiene critical areas.**

A simple, elegant and versatile wall lining system, Protex-antibac™ offers tongued and grooved panels fabricated with Medite moisture resistant MDF, faced with Formica® high pressure laminate (HPL) which fit together quickly to form a tough durable finish to any wall.

With the increase in cases of MRSA, E-Coli and other infectious bacteria it has never been more important to provide a clean and safe environment. The very nature of laminated wall panels ensure a smooth even surface which is easy to wipe clean over and over and without damage to the surface properties.



Protex-antibac™ is the wall lining solution for a vast range of environments including the healthcare sector, education and catering industries. Applications may include;

- > **hospital corridors and wards**
- > **school 'breakout' areas**
- > **nursery areas**
- > **canteens and fast food restaurants**
- > **commercial kitchens and food processing areas**

All panels are manufactured by Rearo Laminates to strict quality and hygiene specifications at the company's Glasgow manufacturing facility.

**"These surfaces are designed to offer one of the best opportunities that can enable microbiological contamination to be reduced to a minimum"**

Dr Chris Woodall,  
BluScientific Test Data,  
Glasgow Caledonian University

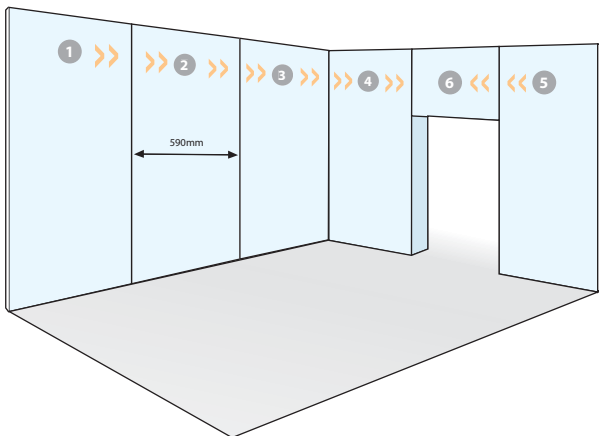
BluScientific Test Data







Protex-antibac™ wall panels are the perfect solution for the catering environment. Quick & easy to install to any kitchen or food preparation area, we guarantee the panels will last for 10 years. As there are no wet trades involved installation is with the minimum of fuss - what's more, unlike tiles, there is no grout, so no nasty corners or hiding places for bacteria to form.



### Easy to install

Protex-antibac by Rearo is an exclusive partnership with Formica Limited and is designed and manufactured to the highest standards. Assembly of the 3000 x 590mm panel on site is quick and easy. The only install preparation that is required is the application of timber battens onto which the panels are fixed.

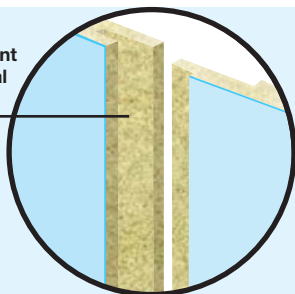


### How many panels?

When calculating the number of panels required start from a corner and work around the room or corridor finishing above a door or window. Pipes and ducts may be concealed behind the Protex-antibac™ wall lining system.

If required accessories may be fixed directly onto the panel with no risk of cracking or grazing, provided proper installation procedures are followed.

Tongue and Groove joint incorporates a Thermal Expansion Gap

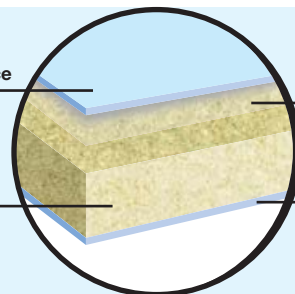


Formica® High Pressure Decorative Laminate Surface

Medite 9mm moisture resistant MDF

PUR Holtmelt Adhesive

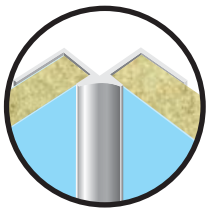
Rearo VBF Grade Fire Resistant Backing Laminate



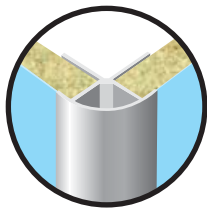
## Finishing trims

Protex-antibac™ can be supplied complete with the required finishing trims. Precisely manufactured to fit Protex-antibac™ panels, the smooth, snug fitting extrusions ensure that the entire system is easy to clean and that the threat of bacteria is minimal.

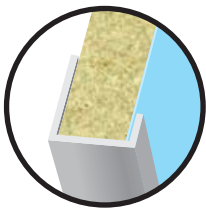
The matching white finishing trims are available in four extruded profiles; a capping strip, an H section (for vertical connection of installations more than 3000mm high), internal and external corner sections.



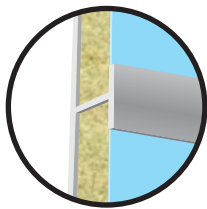
Internal Corner



External Corner



End Cap (edges)



H-Section - 2500mm

For use on wall lining higher than 3000mm.  
Allows panels above to be secured to first panels



## Sealants

Colour matched sealants are available to prevent any dark lines which may occur on the panel joints. A watertight fix is achieved with a silicone or acrylic sealant as appropriate, this will not crumble or harbour germs or bacteria.

## Skirting Detail

Protex-antibac™ can be installed without skirting to provide a floor to ceiling effect. Alternatively, skirting can be fixed directly to Protex-antibac™ without the need for any special preparation.

## Care & Maintenance

Laminate surfaces are best kept clean using water and mild detergent. Non scratch liquids or creams are recommended for stubborn stains. This is the only form of maintenance required.

## Guide Specification

Timber battens (pressure impregnated with suitable wood preservative in areas of high humidity or moisture) shall be applied to the wall horizontally at nom. 600mm centres. Panels are to be pinned/screwed to battens through tongued and grooved fixing profiles. No prior preparation of the wall is necessary; battens may be fixed directly to masonry.

## Panel Specification

<b>Height</b>	3000mm
<b>Width</b>	590mm (face size)
<b>Thickness</b>	11mm
<b>Jointing</b>	Tongue and groove standard panels
<b>Fire Rating</b>	Class 1 surface spread of flame as standard BS476 Part 7
<b>Substrate</b>	Meditate 9mm moisture resistant MDF
<b>Resistance to water</b>	Pur Hotmelt adhesive conforms to D4 moisture resistance
<b>Packaging</b>	Panel supplied in packs which include full technical installation guide

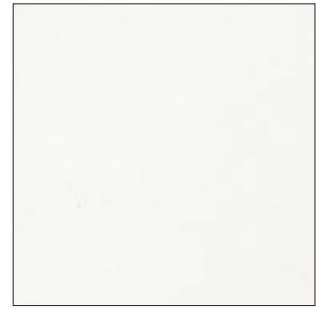
Corner details (if required) are to be aluminium inner/outer extrusion as supplied by the panel manufacturer.

Sealant shall be applied in the tongue of the panel on fitting.

## Standard Protex-antibac™ shades



**Cream Mistral**  
**F5096 VEL**  
**Finish: Velour**



**Polar White**  
**F2255**  
**Finish: Gloss or Velour**

**BS00E55 Ral 9003**



### Bespoke Service

The trend for 'designed' interiors has never been greater and with the Formica® Bespoke range of products, Rearo can manufacture stunning looking wall panels with your very own design incorporated. These panels have all the same hygienic quality and durability of standard Protex-antibac™ and designs are limited only by your imagination. Contact your local Rearo office for full details and to see samples of this fantastic product.

Don't worry if you come across tricky details, such as curved walls or columns, at Rearo with our experience and traditional craftsmen we can offer the complete solution.

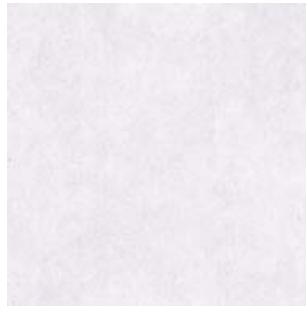


Bespoke laminate images courtesy of Formica Limited





**Green Mistral**  
**F 5098 VEL**  
**Finish: Velour**



**Violet Mistral**  
**F 5076 VEL**  
**Finish: Velour**



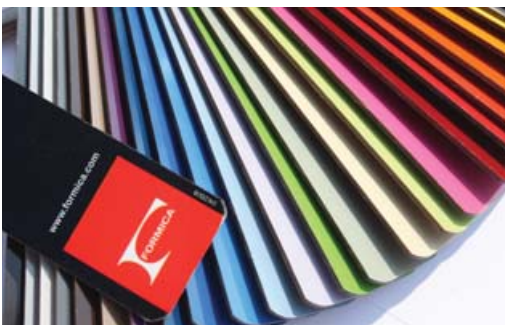
**Blue Mistral**  
**F 5079 VEL**  
**Finish: Velour**

**Protex-antibac™ panels are available 'off the shelf' in five standard shades including white. Panels can be fabricated to order from the full selection of shades available from the Formica® Collection.**

## Request a Free Sample.

Simply email

[samples@rearo.co.uk](mailto:samples@rearo.co.uk)



Disclaimer: The swatch images shown are only representative of the Protex-antibac designs. Please ensure that you request a free physical sample to view accurate colours, patterns and textures prior to specification.

Formica and the Formica logo are registered trademarks of The Diller Corporation

## Why Choose Rearo?

Rearo's custom built 37,000 sq ft manufacturing facility in Glasgow is one of the most advanced in the UK. Protex-antibac™ wall panel is produced alongside a range of other successful laminated products including, washroom cubicles and vanity units, kitchen worktops, IPS solutions and our successful domestic waterproof wall panel, Selkie.

Operating 24 hours a day, with stringent controls, Rearo guarantee that all components produced conform to the highest levels of quality whilst ensuring that deadlines are always met.

In addition to our manufacturing facility in Glasgow, Rearo are well-equipped to provide our products throughout the UK, with service centres in Newport, Rosyth, Gateshead and Lerwick, each with their own fleet of delivery vehicles.





**Rearo, Loanbank House, Loanbank Quadrant, Govan, Glasgow, G51 3HZ**  
**Tel: 0141 440 0800 Fax: 0141 445 3342 [www.rearo.co.uk](http://www.rearo.co.uk) [sales@rearo.co.uk](mailto:sales@rearo.co.uk)**

Rearo  
Unit 15&16 Primrose Lane  
Dunfermline Business Park  
Rosyth  
Fife  
KY11 2RN

Tel - 01383 414000  
Fax - 01383 414400  
E-Mail - [rosyth@rearo.co.uk](mailto:rosyth@rearo.co.uk)

Rearo  
Unit 3  
Eastern Avenue Trade Park  
Team Valley  
Gateshead  
NE11 0PG

Tel - 0191 482 2298  
Fax - 0191 482 6245  
E-Mail - [gateshead@rearo.co.uk](mailto:gateshead@rearo.co.uk)

Rearo  
Staneyhill Gas Depot  
North Road  
Lerwick  
Shetland Isles  
ZE1 0QA

Tel - 01595 692807  
Fax - 01595 695469  
E-Mail - [gas@rearo.co.uk](mailto:gas@rearo.co.uk)

Rearo  
Unit 14 & 15 Estuary Court  
Estuary Road, Queensway Meadows  
Newport  
Gwent  
NP19 4SP

Tel - 01633 283000  
Fax - 01633 283001  
E-Mail - [newport@rearo.co.uk](mailto:newport@rearo.co.uk)