

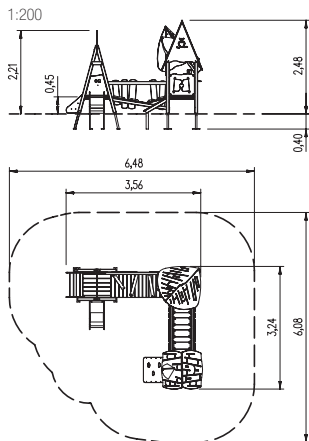
## playo combination Kestrel

### Infobox:

|   |                    |
|---|--------------------|
| Minimum space:                          | 648x608x248 cm     |
| Free falling height:                    | 45 cm              |
| Foundations:                            | 13xPFs or 13xCF    |
| Assembly:                               | 2 persons/10 h     |
| Ground constitution GE/NL/B:            | min. req. top soil |
| Ground constitution all except GE/NL/B: | min. req. top soil |
| Impact protection net:                  | 6,5 m <sup>2</sup> |
| Largest section:                        | 154x100x2 cm       |
| Heaviest section:                       | 14 kg              |



**New!**



5 63 096 0 £ 32.63

Diameter of ready-made foundation:  
290mmx120mm



### Article no.

|             |            |
|-------------|------------|
| 51000801103 | £ 7,999.00 |
| 51000801203 | £ 7,999.00 |
| 51000804103 | £ 8,620.00 |
| 51000804203 | £ 8,620.00 |

- 1 set of posts with post shoes / pine, post shoes hot-dip galvanized
- Set of pine platforms
- Arched roof with dormer window / three-layer pine boards
- Pitched roof / three-layer pine boards
- Set of parapets with windows and shutters
- Slide
- Crawling ramp
- Knik-knack crossover
- Musical sound parapet with wooden sticks
- Musical sound parapet with metal sticks
- Stair ascent
- Wobbly bridge crossover with parapet
- Play counter
- Mounting accessories / article passport

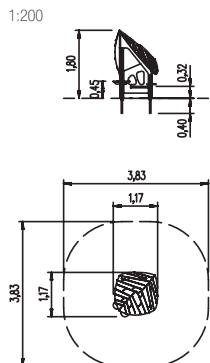
## playo play house Hamster's den

### Infobox:

|   |                |
|---|----------------|
| Minimum space:                          | 383x383x180 cm |
| Free falling height:                    | 27 cm          |
| Foundations:                            | 4xPFs or 4xCF  |
| Assembly:                               | 2 persons/3 h  |
| Ground constitution GE/NL/B:            | -              |
| Ground constitution all except GE/NL/B: | -              |
| Impact protection net:                  | -              |
| Largest section:                        | 154x100x2 cm   |
| Heaviest section:                       | 14 kg          |



**New!**



5 63 096 0 £ 32.63

Diameter of ready-made foundation:  
290mmx120mm

### Article no.

|             |            |
|-------------|------------|
| 51000501103 | £ 1,338.33 |
| 51000501203 | £ 1,338.33 |
| 51000504103 | £ 1,405.27 |
| 51000504203 | £ 1,405.27 |

- 1 set of posts with post shoes / pine, post shoes hot-dip galvanized
- 1 pitched roof / three-layer board, pine
- Set of parapets with windows and shutters
- Play counter
- Bench
- Mounting accessories / article passport

