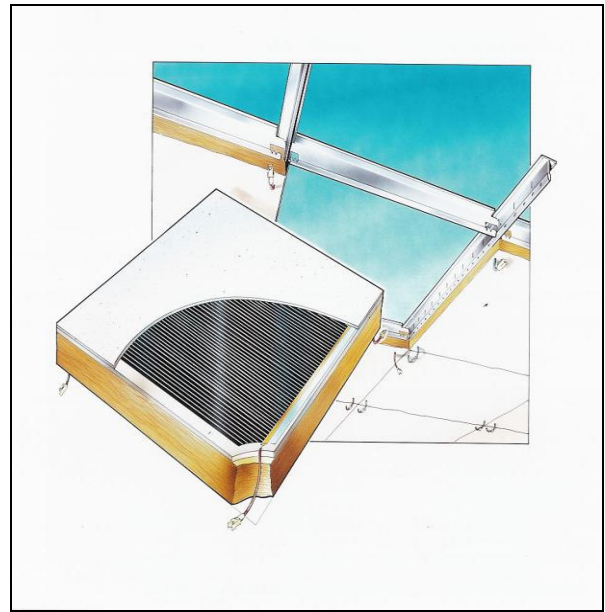




Radiant Heating & Cooling Panels



STRADA ELECTRICAL PRODUCTS

Heating appliances for all applications

Strada introduce a comprehensive range of electrical heaters and panels to suit a wide variety of applications.

CONCEPTS

RADIANT PANELS:

Strada Electric radiant panels emit “black heat” type long-wave radiation, thus the high output cassette units remain a static colour, whilst the low temperature decorative panels have a matt enameled finish to suit interior décor designs.

As insulation standards continue to improve and tariffs are being lowered, electrical radiant heating systems are being designed as a preferred option.

Individual panels can also be fitted as a “retro-fit” item in existing systems to deal with cold Spots and re-partitioning etc.

The Strada range will suit all types of buildings, factories warehouses, showrooms, halls, churches, offices, laboratories etc.using both stock panels and purpose designed systems.

Strada electric heaters emit a wave-length which is designed to transfer radiant heat to people; approximately 95% of incidental radiation would be absorbed in this manner.

Heat of this type is both gentle and pleasant and at this wave-length, heat would be re-radiated (re-lected from walls and furniture etc) therefore adding to the total radiosity. Most of the radiated heat will warm the glass without passing through, thus reducing down draughts.

Control can be effected by room thermostats either singly or in groups via a contactor. Integration into a Building Management Control System will maximize energy savings.

Strada radiant panels and convectors comply with CE regulations and are manufactured under Quality controlled conditions.

CONTENTS

	PAGES
Technical Description – High Output Electric Cassette Heaters	3
Strada Electric High Output Electric Cassette Heaters (SB Range)	4
Strada Electric High Output Electric Cassette Heaters (SA Range)	5
Strada Electric Ceiling Mounted Modular Panels	6
Strada Electric Wall Mounted Convectors	7
Strada Electric Skirting Heating	8
Strada Electric Purpose Made Wall and Ceiling Panels	9 - 10
Stradatherm Electric Heated False Ceiling Tiles	11

STRADA HIGH OUTPUT CASSETTE HEATERS

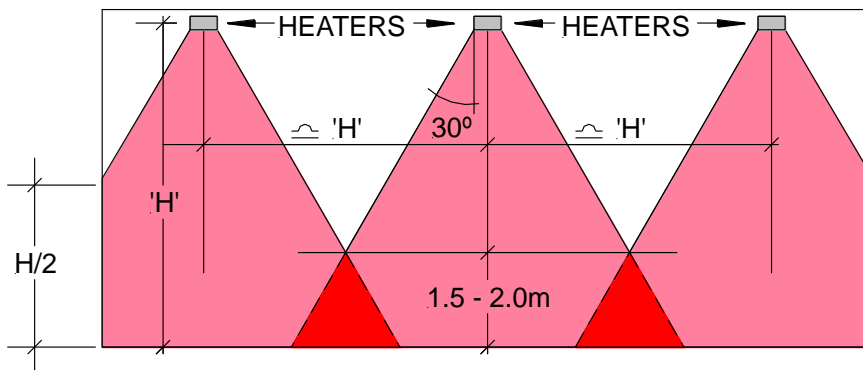
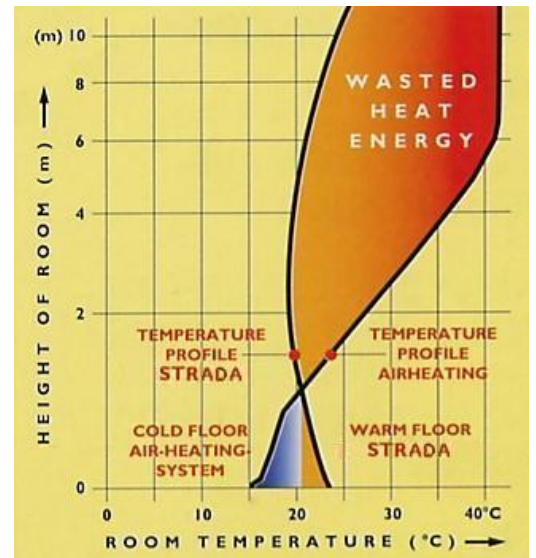
Strada produce two ranges of these extremely versatile high output panels. Operating at the low end of the radiant spectrum these panels emit long wave length radiation which is effective whilst avoiding unsightly glare.

These ranges are shown in detail overleaf; SB range on Page 4 and our SA range on Page 5.

Siting the heaters is important and the recommended mounting heights and the diagrams below should be used as a guide for each model.

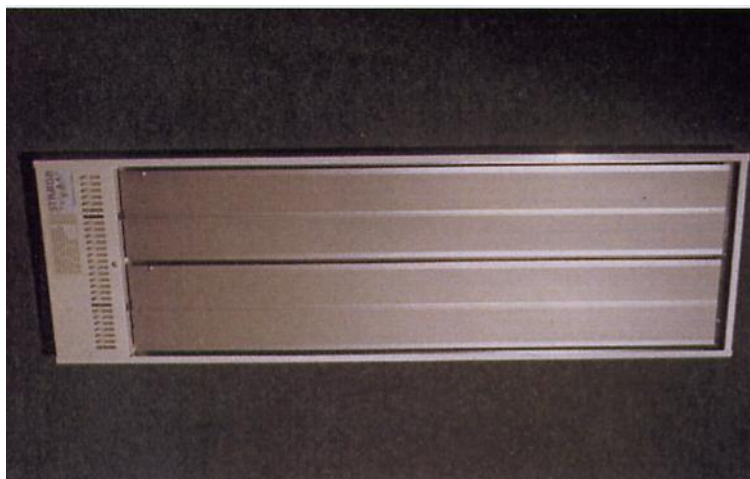
Strada cassette heaters claim to be energy efficient with savings up to 40% over conventional systems by warming the floor and minimizing stratification.

Panels can be installed suspended horizontally or wall mounted on angled adjustable fixing brackets.



SECTION

Example showing positioning of heaters in order to warm outside wall and provide radiant coverage to the floor. This arrangement ensures proper effectiveness at head height. Spacing can be increased for warehouses, factories etc.



STRADA ELECTRIC CASSETTE HEATERS

SB RANGE

An attractive **high output** panel range, specially designed for high level mounting. Their attractive finish encourages use in prestige locations.

These panels can be suspended horizontally or wall mounted on angled brackets.

- Effective up to 40 metres.
- Maintenance Free.
- Long wave "Black Heat" type radiation.
- Established over 30 years.
- Avoids "glow" and hot spots.
- Attractive powder coated casing. (RAL 9010 off white) and silver radiating faceplates.
- Fully insulated galvanized casing, with Class "O" foil backed 25mm thick insulation.
- Controlled singly or in groups through a contactor.
- Wall brackets available.
- Models SB18 and larger are available to suit single Phase & 3-Phase supply.



Strada Cassette heaters emit a wavelength 5-6 (μm) and the unique elements avoid the creation of Electro-magnetic fields. The face temperature of the panels does not exceed 300°C, and 90°C on the back of the casing

Emissions:

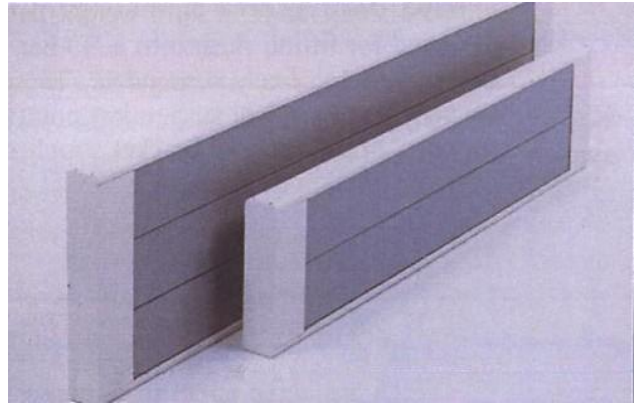
Type	Length (mm)	Width (mm)	Depth (mm)	Voltage (V)	Output (Watts)	Weights (Kgs)	Guide To Mounting Heights
SB 09	1500	130	60	240v	900	5.80	2.00 m.min - 3.00 m.max
SB 12	1500	130	60	240v	1,200	5.80	2.30 m.min - 3.50 m.max
SB 18	1500	230	60	240/400v	1,800	9.90	2.50 m.min - 4.00 m.max
SB 24	1500	230	60	240/400v	2,400	9.90	3.00 m.min - 7.00 m.max
SB 30	1500	330	60	240/400v	3,000	13.90	3.50 m.min - 10.00 m.max
SB 36	1500	330	60	240/400v	3,600	13.90	4.50 m.min - 20.00 m.max

STRADA ELECTRIC CASSETTE HEATERS

SA RANGE

Similar in most respects to the SB range on Page 4, these panels differ in sizes and appearance.

- RAL 9016 White casing with silver radiating faceplates.
- SA 300 supplied in grey finish only.
- Sheet steel casing; ribbed aluminium radiant faceplates.
- Competitively priced.
- Models SA 84 124 174 and 244 suitable for
- 3 phase 400 volt supply.
- Model SA 36 can be configured for either 230 or 400 volt supply.
- Compressed mineral wool insulation Class "O"
- Protection: Class 1, IPx 4. Cable gland to IP44
- CE Conforms to European Norms.



Type	Length (mm)	Width (mm)	Depth (mm)	Voltage (V)	Output (Watts)	Weights (Kgs)	Guide To Mounting Heights
SA 06	1000	150	50	230v	600	3.7	3.00 m min - 5.00 m max
SA 08	683	282	64	230v	800	4.9	3.00 m min - 6.00 m max
SA 084	683	282	64	400v	800	4.9	3.00 m min - 6.00 m max
SA 11a	1500	150	50	230v	1050	5.4	3.50 m min - 7.00 m max
SA 12	923	282	64	230v	1200	6.8	3.50 m min - 7.00 m max
SA 124	923	282	64	400v	1200	6.8	3.50 m min - 7.00 m max
SA 15	2000	150	50	230v	1500	7.8	4.50.m min - 9.00 m max
SA 17	1221	282	64	230v	1700	8.8	4.50 m min – 11.00 m max
SA 174	1221	282	64	400v	1700	8.8	4.50 m min - 11.00 m max
SA 22	1520	282	64	230v	2200	10.7	6.00 m min - 20.00 m max
SA 224	1520	282	64	400v	2200	10.7	6.00 m min - 20.00 m max
SA 36	1670	420	63	230/400v	3600	19.8	6.00 m min - 25.00 m max

STRADA CEILING MOUNTED ELECTRIC PANELS

DETAILS & SPECIFICATION

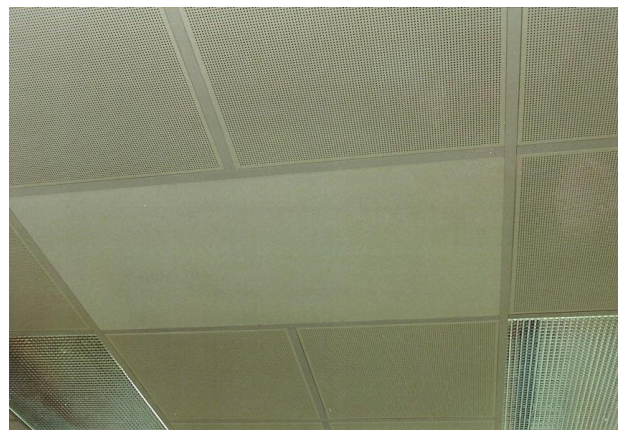
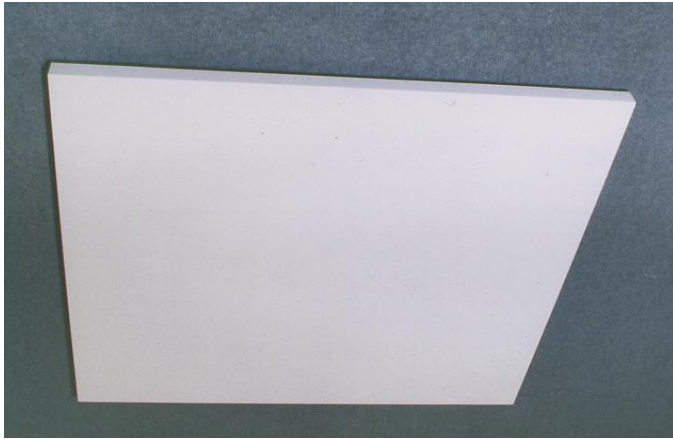
DETAILS

This is a stock range of lightweight panels, designed for fitting flush into a "T" Bar false ceiling or being freely suspended.

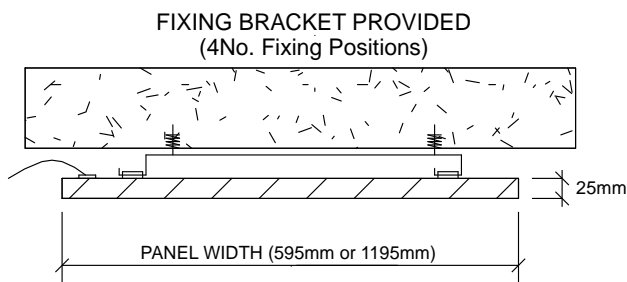
These panels are simply fitted by 4No. suspension points for wire supports or by a special bracket supplied for fixing beneath a solid ceiling.

SPECIFICATION

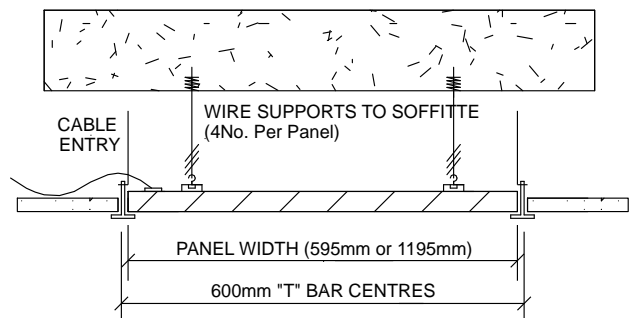
- 22 g galvanized steel radiating face.
- Fully insulated panel to optimize performance and minimize heat loss through the rear surface.
- Fits into standard "T" bar false ceiling (7No.models).
- Slimline model (SEL) suitable for perimeter heating.
- Standard finish white textured.
- 24 g galvanised steel backing plate.
- 1.50 m heat resisting cable attached.
- Thermal overload protection.



**STRADA SEC MODULAR PANEL
INSTALLED BENEATH A SOLID CEILING**



**STRADA SEC 500 MODULAR PANEL
INSTALLED WITHIN A "T" BAR FALSE CEILING**



Emissions:

(R = Panel incorporating hooded border surround)

Type	Length (mm)	Width (mm)	Depth (mm)	Voltage (V)	Output (Watts)	Weights (Kgs)	Guide To Mounting Heights
SEC 250	595	595	25	230v/240v	250	6.00	2.40 m min – 6.00 m max
SEC 300	595	595	25	230v/240v	300	6.00	2.40 m min – 6.00 m max
SEC 500	1195	595	25	230v/240v	500	12.00	2.40 m min – 6.00 m max
SEC 500 (R)	1195	595	25	230v/240v	500	12.00	2.40 m min – 6.00 m max
SEC 600	1195	595	25	230v/240v	600	12.00	2.40 m min – 6.00 m max
SEL 300	1195	295	25	230v/240v	300	4.00	2.40 m min – 6.00 m max

Note: Please deduct 15% of output for mounting heights between 6.00 and 8.00 metres.

STRADA ELECTRIC WALL MOUNTED CONVECTORS

STANDARD RANGE

Strada EcoFlex wall mounted convector heaters are available in 8No. standard sizes with outputs ranging from 500 to 2500 watts.

These units are robust, manufactured from sheet steel, with a white powder coated finish and grey top outlet grille. These units provide radiant/convective output, with separate adjustable thermostatic/manual control.

Also included within the unit is an overheat thermostat.

- Separate Wall Mounting Brackets
- Prewired with 1.50 m heat resisting cable.
- Protection: IP24
- CE Conforms to European Norms.
- Competitively priced.



Strada ECO 1000
Heater fixed to a wall



Manual/Thermostatic controls fitted on rear/side of heaters.



Emissions:

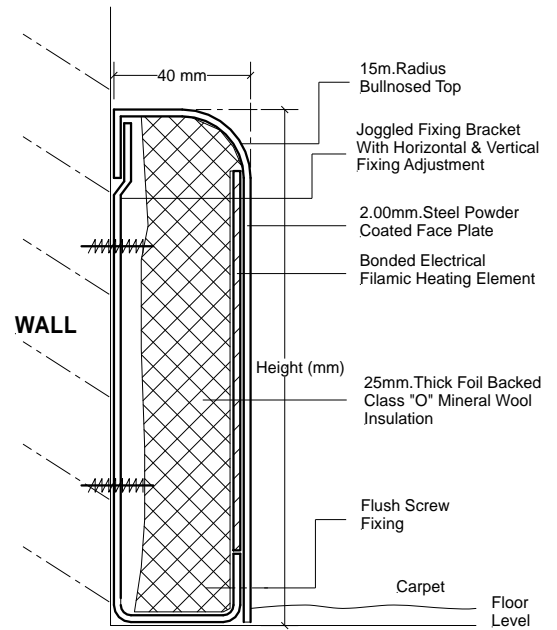
Type	Length (mm)	Width (mm)	Depth (mm)	Voltage (V)	Output (Watts)	Weights (Kgs)	Guide To Mounting Heights
ECO 500	280	400	80	230v/240v	500	2.90	100 mm u/s Heater to FFL
ECO 750	360	400	80	230v/240v	750	3.50	100 mm u/s Heater to FFL
ECO 1000	440	400	80	230v/240v	1000	4.00	100 mm u/s Heater to FFL
ECO 1250	520	400	80	230v/240v	1250	4.70	100 mm u/s Heater to FFL
ECO 1500	600	400	80	230v/240v	1500	5.30	100 mm u/s Heater to FFL
ECO 1750	680	400	80	230v/240v	1750	5.90	100 mm u/s Heater to FFL
ECO 2000	750	400	80	230v/240v	2000	6.60	100 mm u/s Heater to FFL
ECO 2500	1000	400	80	230v/240v	2500	8.80	100 mm u/s Heater to FFL

STRADA ELECTRIC SKIRTING HEATING

DETAILS & SPECIFICATION

An attractive and discreet form of heating with a choice of heights and profiles.

- Mild steel casing, 2.00 mm thick with bullnosed radius of square folded top.
- Electrical element bonded to face plate.
- Cable ends would be made into terminal boxes on each run.
- Class "O" foil backed insulation (40 mm.thick)
- Powder coated finish, 30% gloss, 60 microns (RAL9010.standard).
- Multi-purpose bracket allows wall fixing.
- End stops, connection boxes, joint strips, inside & outside corners are available to allow bespoke installations.
- LTHW model also available – Please see separate brochure.



SECTION



Emissions: (Watts/Linear M)

Room Temp °C	16	18	19	20	21	22	23	24
Skirting Height	Watts/ Lin.m	Watts/ Lin.m	Watts/ Lin.m	Watts/ Lin.m	Watts/ Lin.m	Watts/ Lin.m	Watts/ Lin.m	Watts/ Lin.m
140 mm High	130	127	125	123	122	120	117	115
150 mm High	138	135	133	131	129	126	124	122
200 mm High	176	172	169	167	164	162	159	156
250 mm High	215	209	206	203	200	192	194	191
300 mm High	253	247	243	239	236	232	229	225

STRADA ELECTRIC PANELS

WALL MOUNTED (SPECIALS)

Strada Electric panels can be manufactured to suit most applications.

Wall mounted panels are usually constructed from 2.00 mm.thick mild steel, in order to provide a durable and impact resistant unit.

Where panels are sited at low level, rounded front edges can be provided, providing a “softer” appearance and additional safety. (Ideal for applications such as: Landlord areas within blocks of Flats etc).

Removable access covers for site wiring can be provided or panels can be supplied with 1.50 metre heat resisting cable.

Panel sizes are generally confined to a maximum of 2.50 m.x 1.20 m.vertical or horizontal.

Concealed fixing can be provided on panels, using keyhole slots, with bolts into block walls (See detail).

Electrical elements are bonded to the interior face of panels, which are fully insulated.

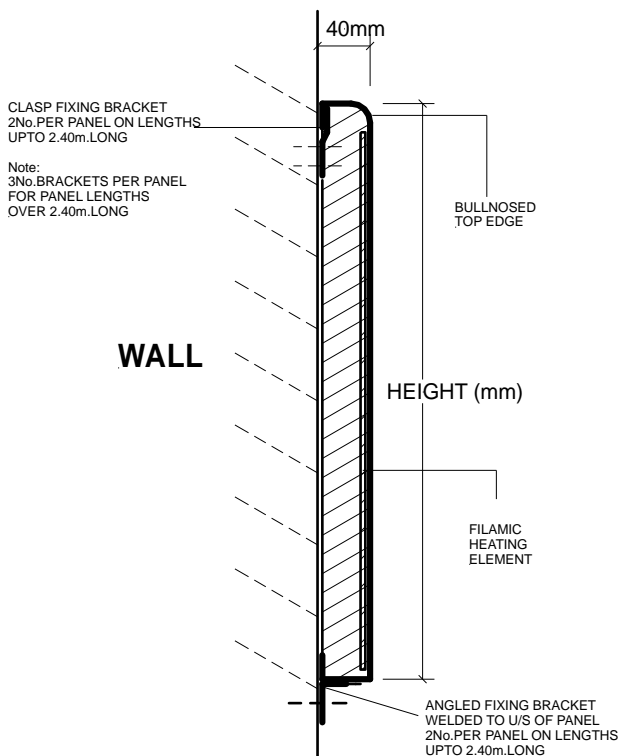
- Purpose made to suit application.
- Bonded electrical elements.
- Class “O” foil backed mineral wool insulation (40mm.thick)
- Earth bonding and wiring connections at rear of panels.
- Powder coated finish, 30% gloss, 60 microns (RAL9010.standard).
- Control by separate room thermostat.
- Inbuilt limit thermostat. (80°C)



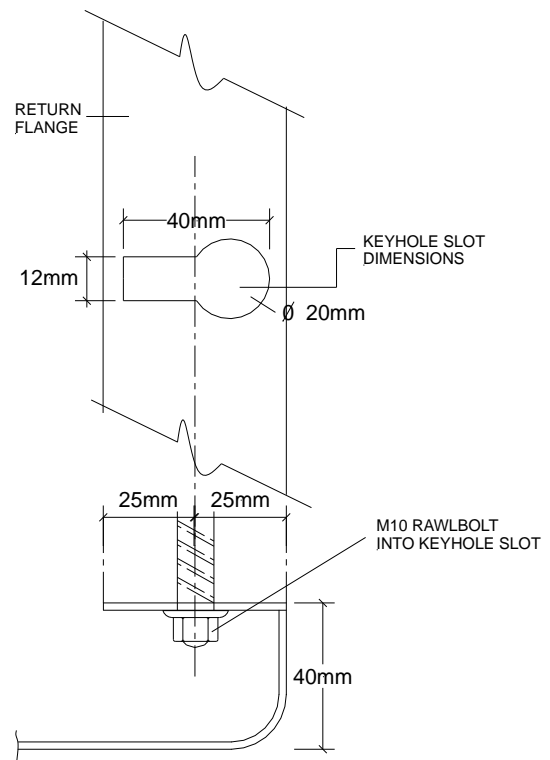
OUTPUT:

Wall Panels:

Approx. 650 Watts/m² @ 20.0°C R.T.



Section – Horizontal Type Wall Panel



Vertical Wall Panel Keyhole Fixing Detail

STRADA ELECTRIC PANELS

CEILING MOUNTED (SPECIALS)

Ceiling mounted panels can be constructed to suit false ceiling modules, or for freely suspended applications.

Details of standard panels constructed for false ceilings or free-hanging are shown on Page 6 of this brochure.

Panels up to 2.50 m long and 1.00 m wide are constructed from 2.00 mm thick best quality aluminium or 2.00 mm steel for secure type units.

Panels are folded at the edges for additional stability, with fixing points for mounting to the soffit.

The electrical elements are bonded to the interior of the panel and fully insulated. Inbuilt limit thermostats set at 80°C included.

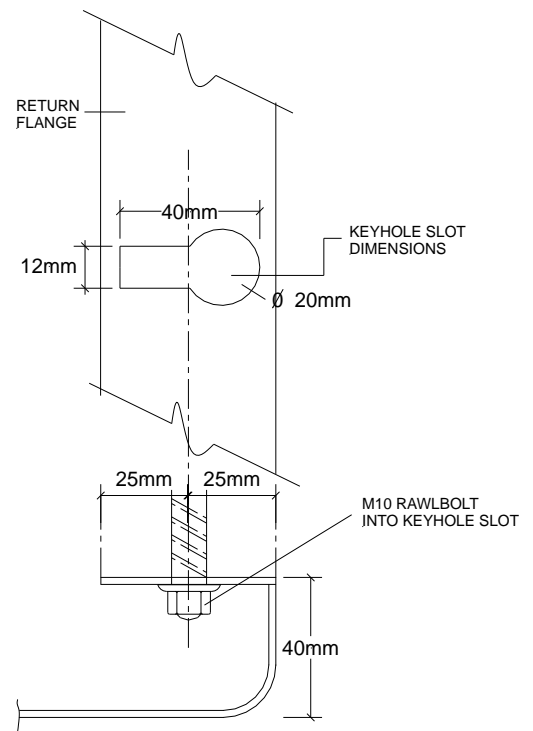
All panels have a terminal block to accept heat resistant flex connections on site.

Earth leakage testing is carried out at works and certificates issued.

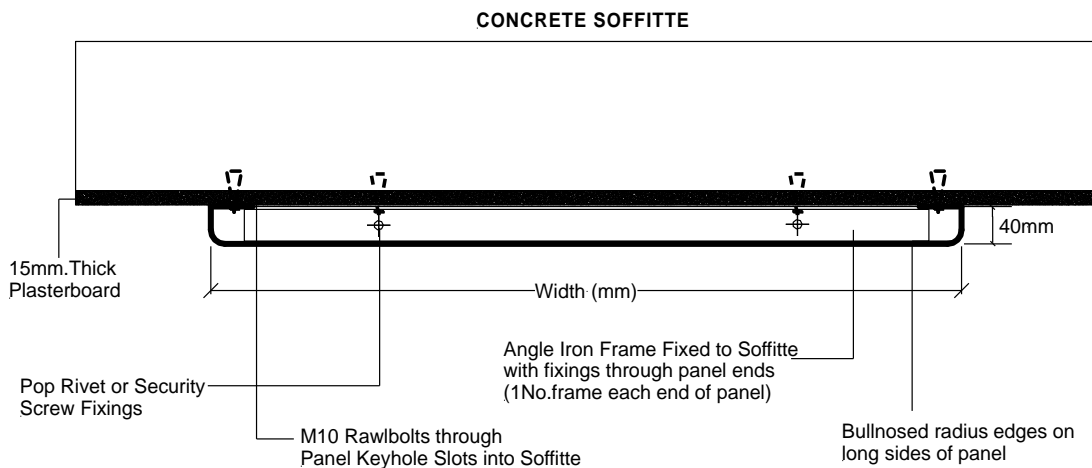
OUTPUT:

Ceiling Panels:

Approx. 700 Watts/m² @ 20.0°C R.T.



Keyhole Fixing Detail



**DETAIL OF STRADA SECURITY TYPE ELECTRIC PANEL
FITTED WITHIN PRISON CELL TYPE UNITS EFFECTING VANDAL PROOF DESIGN.**

'STRADATHERM' ELECTRIC HEATED FALSE CEILING TILES

DETAILS & SPECIFICATION

Strada manufacture false ceiling tiles incorporating an electrical heating element, designed to fit discreetly into "T" bar false ceilings, both Standard and Micro-tee.

These tiles are manufactured 595 mm long x 595 mm wide, fully insulated on the rear and available in Armstrong "Dune" & "Tatra" finishes.

OUTPUT:

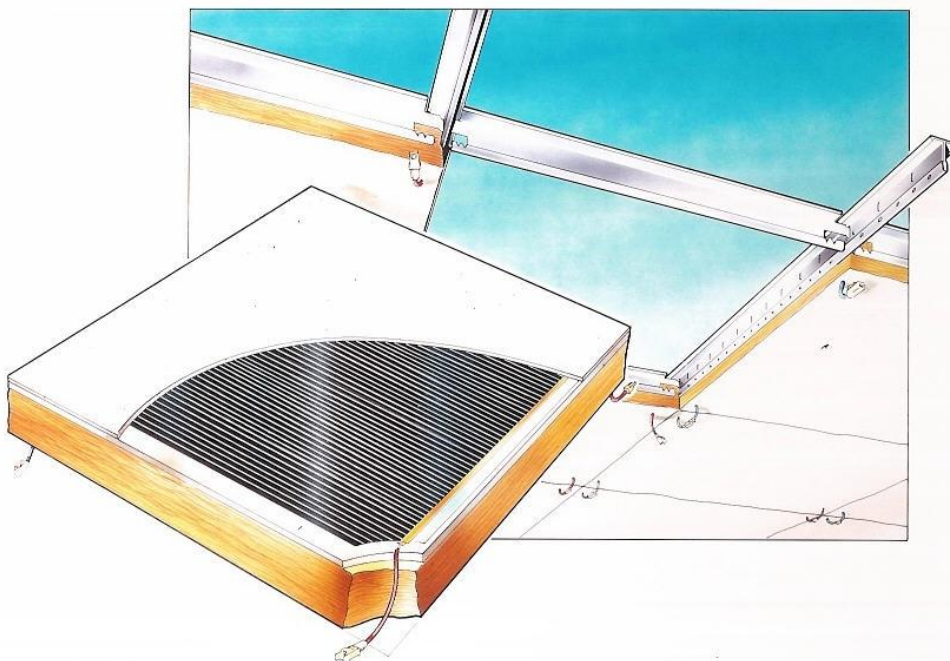
Stradatherm:

70 Watts per Tile (230v, 1 phase supply)

Finishes:



ISOMETRIC VIEW



These tiles are ideal for ensuring even heat distribution within a false ceiling and are ideally suited for "retro-fit" systems to overcome cold spots without the need for costly pipework run-outs and emitters etc.

The panels emit gentle warmth and have no moving parts thus avoiding creation of noise, dust and air movement.

Panels are fully integrated with lighting layouts etc.

Controls:

Simple room thermostat control in groups as required, up to 3,500 Watts per single thermostat.

Other Strada Products

Strada Trench Convector

2No. Models, Hot Water and Electric.

Strada Flat Panel Range

Aluminium & Steel for ceiling & wall mounting.

Stradaflair

Lightweight, continuous radiant heating strips.

Strada Heated & Chilled Ceilings

Economic and comfortable heating and cooling systems.

Strada Radiant Skirting

For L.T.H.W. & Electrical use.

Strada Electric Underfloor & Ceiling Systems

Underfloor & Ceiling heating, Cable Mats & Kits.



Radiant Heating & Cooling Panels

STRADA

Old Farm Court,
Barton, Nottingham,
NG11 0AN.

Telephone: 0115 9831038

Facsimile: 0115 8240600

Web Site: www.stradarad.co.uk

Email: Contracts@stradarad.co.uk

SEP-5.9/ 01.01.2011