



Hamilton CPX<sup>®</sup> Sann Stainless

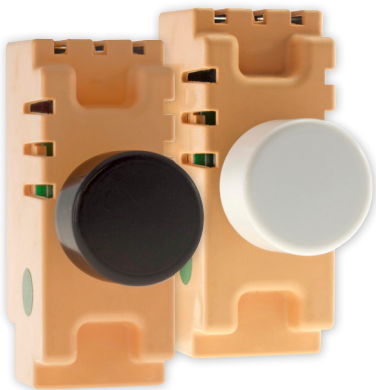
## LEDstat

### The Intelligent LED Dimmer

Hamilton's intelligent LED dimming device monitors and programs itself for best performance depending on the LED lamp used, making it compatible with a wide variety of branded lamp types. The LEDstat dimmer is available in a wide selection of Hamilton's range of styles and finishes.

### Gridstat 100 - Dimmer Module

All the features and benefits of the LEDstat, now available as a grid module only. The Hamilton Gridstat 100 has been designed to be compatible with many popular grid based/clip-in switch plates, making it ideal for retro-fitting into existing wall plates.



The LEDstat dimmer is so easy to program, but don't just take our word for it!

See it for yourself on **YouTube**

Item Code	Description
1X100LED	1 gang 100W LEDstat Dimmer
2X100LED	2 gang 100W LEDstat Dimmer
3X100LED	3 gang 100W LEDstat Dimmer
4X100LED	4 gang 100W LEDstat Dimmer
GRID100LED	1 gang 100W Grid Module
GRIDKITBL	Grid Cover Kit Black
GRIDKITWH	Grid Cover Kit White

### Product Features:

- Control mains dimmable LED lamps and luminaires
- Auto adjustment to deliver superior dimming performance when using a mix of branded LED lamps
- Built in thermal overload protection
- Soft start feature helps extend lamp life
- Leading or trailing edge option as standard
- Min/max levels programmable even when product installed
- 2 Way dimming operation available when using a retractive switch
- Interchangeable grid covers compatible with many popular Grid Systems;
  - Hamilton
  - Crabtree
  - Hager
  - MK Electrical
  - British General
  - Deta
  - Schneider Electric
  - Wandsworth
- Sales Code for Grid Kits
  - GRIDKITBL - Black
  - GRIDKITWH - White
- Available in a wide range of plate designs and finishes
- Available in 1 to 4 gang plate size or individual grid module
- Fits into standard 35mm back box

### Technical Information:

<b>Ratings:</b>	230-240V AC ~ 50Hz
<b>Minimum Load:</b>	5W mains LED
<b>Maximum Load</b>	100W in <i>trailing edge mode</i> 75W in <i>leading edge mode</i>
<b>Standard / Approval:</b>	BS EN 60669-2-1

When using mains LED lamps or luminaires fitted with external drivers that require a **leading edge** control, the dimmer should be de-rated by 25% to allow for possible inherent in-rush current which can be experienced with some lamps and can cause the dimmer to overheat.

### Compatible Lamp Types:

- Incandescent lamps
- Mains halogen
- Mains dimmable LED lamps
- Mains dimmable CFL lamps
- Dimmable LV electronic transformers

### Plate Information:

Please see our full catalogue for our extensive range of plate designs and finishes.

LEDstat Item Code	Gridstat Item Code	No. Dimmer Switches per Plate	Nominal Plate Size (mm)	Max loading per plate (Trailing Edge)	Max loading per plate (Leading Edge) -25%
1X100LED	GRID100LED	1	88 x 88	100W	75W
2X100LED	GRID100LED	2	88 x 88	200W	150W
3X100LED	GRID100LED	3	86 x 146	300W	225W
4X100LED	GRID100LED	4	86 x 146	400W	300W



Due to manufacturing processes we cannot guarantee an exact colour match and shadings of certain finishes. It is the policy of the company to improve products as part of our development programme. Therefore, we reserve the right to alter information, designs and dimensions without prior notice. All products listed conform to current British or European standards and the product information is correct at the time of going to press. Illustrations and diagrams are reproduced within the limitations of reproduction and printing process and are not binding.