

# DRESSERS & CABINETS

---



The Dining Room is one of the great convivial gathering places. The scene of quiet companionable lunches, family get-togethers, elegant dining or everyday mealtimes, it is a stage set for eating.

The Dresser has always played a key role within many dining rooms. The term 'dresser' appeared frequently in medieval inventories, and seems to have referred to some form of side-table on which food was 'dressed' before serving. The dressers that we know today evolved in the 17th century as a piece of working furniture for the dining room or kitchen. During the 18th century the 'rack' became an important feature of all dressers, usually unattached, and either simply sat on the top of the base, or was fixed to the wall. As with all country furniture, there are many variations.



*A Sense of Occasion*







*Classic Dining*

COUNTRY LIVING



# THE PENABER DRESSER *Preserving Tradition*



Detail of dresser Ref: 101



Detail of drawers Ref: 101  
showing inlaid rosewood banding

PENABER DRESSER Ref: 101A

A fine George III dresser, circa 1775. This dresser was originally made for the Evans family of Penaber House, as part of a dowry.

A canopied upper section with moulded cornice and turned finials over shelves and three fielded panel cupboards and pairs of small drawers, inlaid with rosewood banding.

The lower section has three drawers above fielded panelled cupboards.

The Penaber is also available with Burr panels as shown here.

Size shown:

H: 76" x W: 64½" x D: 21"  
(H: 193 x W: 164 x D: 53cm)

Finish: "Golden Oak"





# CONWY DRESSER



Detail of rack



Detail of drawer  
showing fielded drawer front  
with dovetails and pierced back  
plate brassware.

2 DOOR DRESSER Ref: 102A

This 2 door version of a North Wales dresser shows a rack above a base with 2 drawers and fielded panels.

As a general rule, North Wales dressers usually had backboards on the rack and both cupboards and drawers below, in contrast to the south which tended to have open bases.

The term 'Welsh Dresser' has loosely been used to describe dressers of the more open southern type. True Welsh Dressers often have more elaborately scrolled uprights on the rack and more decorative, carved, or even pierced aprons on both the rack and base.

Size shown:

H: 75" x W: 42" x D: 19½"  
(H: 191 x W: 107 x D: 49cm)

Finish: "Light Oak"





# DENBIGHSHIRE DRESSER

## *Character & Charm*

DENBIGHSHIRE DRESSER

Ref:104A

During and towards the end of the 18th century, the designs of dressers became grander in their conception. By the 1800's Welsh dressers were being created which could lay claim to being fine pieces of cabinet work.

The Denbighshire Dresser has a canopy rack with fielded panel cupboards and spice drawers. Top cupboards have adjustable inner shelves.

Size shown:

H: 75" x W: 66" x D: 19½"

(H: 191 x W: 168 x D: 49cm)

Finish: "Golden Oak"



Detail of rack

104A



# CAERNARFON DRESSER



Detail of dresser Ref: 103A



Detail of dresser

CAERNARFON DRESSER Ref:103A

This North Wales dresser has a simpler design and construction. A fine example of canopy rack above spice drawers.

North Wales dressers differ to those of the south and have a closed base with cupboards.

Size shown:

H: 75" x W: 54" x D: 19½"

(H: 191 x W: 137 x D: 49cm)

Finish: "Golden Oak"



AVAILABLE IN VARIOUS FINISHES

NINE



# NORTH WALES DRESSER BASE



Detail of drawer shown with flock lined cutlery compartments as optional extra.



Detail of drawer traditional construction showing solid base and 'through' dove tail joints.

TEN



NORTH WALES LOW DRESSER BASE

Ref:104B

Eighteenth century Dresser base from North Wales, circa 1740.

Size shown:

H: 32" x W: 66" x D: 19½"

(H: 81 x W: 168 x D: 49cm)

Finish: "Golden Oak"

OTHER SIZES AVAILABLE - PLEASE REFER TO PRICE LIST



# LUDLOW DRESSER

LUDLOW DRESSER

Ref:105A

With the addition of leaded glazed doors this North Wales dresser has a moulded cornice above two doors which surround open shelves.

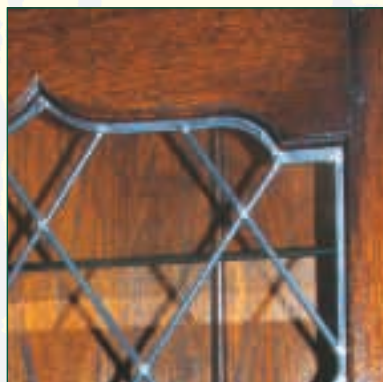
The dresser base has three fielded drawers above three doors. Lighting and glass shelves within the leaded doors are available as an option.

Size shown:

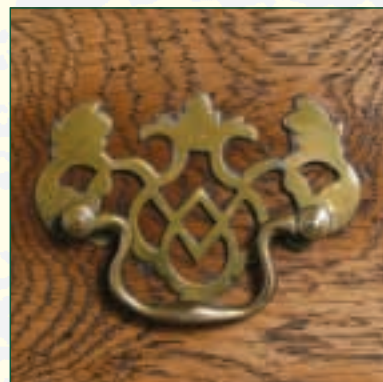
H: 80" x W: 66" x D: 19½"

(H: 203 x W: 168 x D: 49cm)

Finish: "Golden Oak"



Detail of glazing



Detail of brassware





# ANGLESEY DRESSER BASE

---



ANGLESEY DRESSER BASE Ref:114

Five drawer sideboard with  
bracket feet. Shown in Pippy Oak.

Size shown:

H: 34" x W: 66" x D: 19½"

(H: 86 x W: 168 x D: 49cm)

Finish: "Light Oak"



# MONTGOMERYSHIRE DRESSER

MONTGOMERYSHIRE DRESSER Ref:106C

A fine Mid-Wales open high dresser, circa 1780, with three drawers above a moulded apron with ogee friezes and baluster turned legs joined by a potboard, on turned feet.

The ogee arches between the legs are a distinctive feature of dressers from this region.

Dresser Base (below) Ref:106D

H: 32" x W: 66" x D: 19½"

(H: 81 x W: 168 x D: 49cm)

Finish: "Medium Oak"

Dresser (right) Ref:106C

H: 84" x W: 66" x D: 19½"

(H: 213 x W: 168 x D: 49cm)

Finish: "Medium Oak"



MONTGOMERYSHIRE DRESSER BASE

REF:106D





# CARMARTHENSHIRE SERVER



CARMARTHENSHIRE SERVER

Ref:107

Eighteenth century Open Low Dresser from South Wales, circa 1730.

Size shown: H: 32" x W: 60" x D: 19½" (H: 81 x W: 152 x D: 49cm)

Finish: "Light Oak"

FOURTEEN

AVAILABLE IN VARIOUS FINISHES



# PEMBROKESHIRE

SOUTH WALES DRESSER

Ref:108C

Eighteenth century potboard dresser. c.1780. The moulded cornice sits on a boarded rack above an open base with three drawers.

Size shown:

H: 75" x W: 60" x D: 19½"

(H: 191 x W: 152 x D: 49cm)

Finish: "Golden Oak"



Hand planing

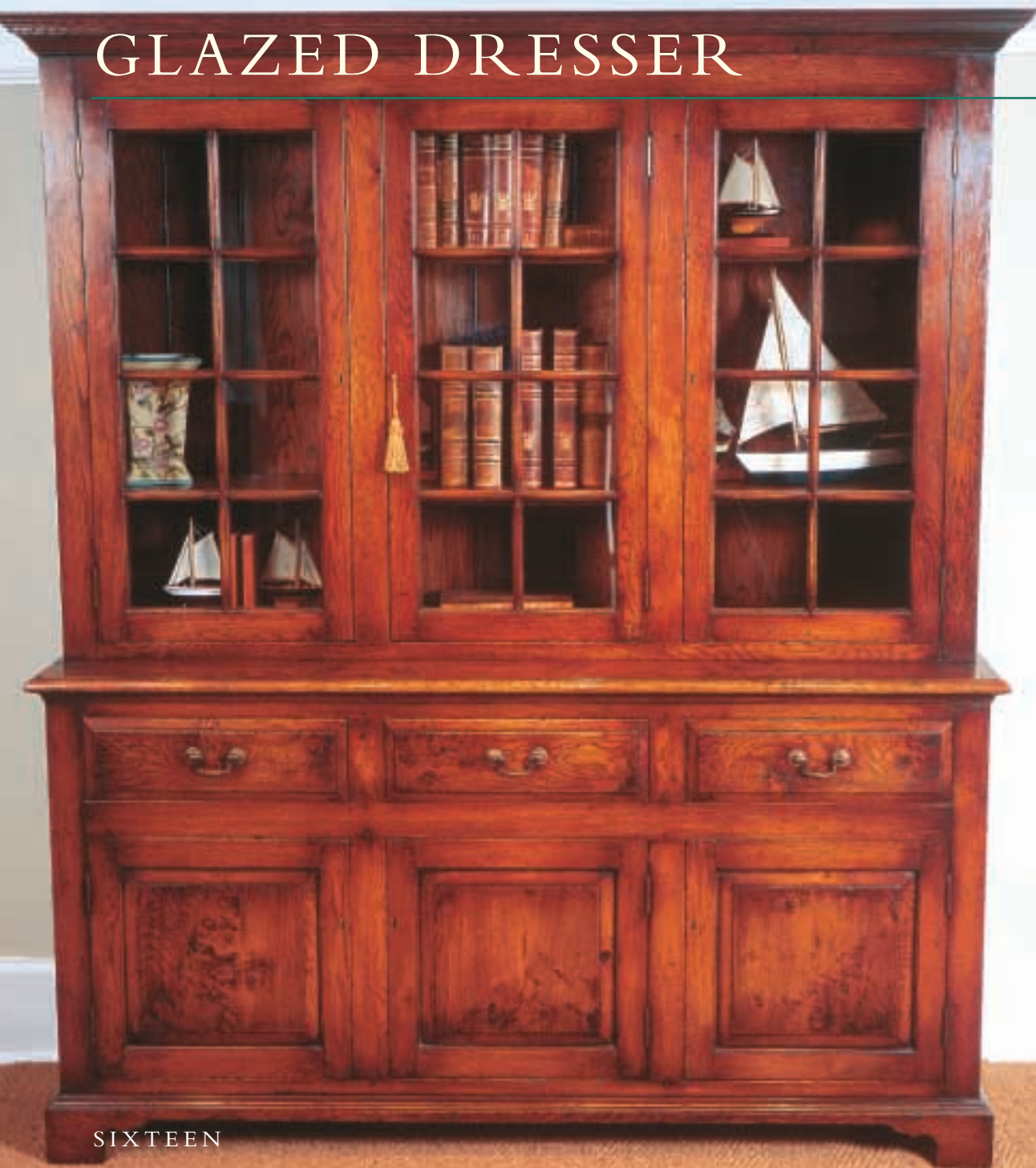


Detail of potboard





# GLAZED DRESSER



## *Prized Possession*

THREE DRAWER GLAZED DRESSER

Ref:109E

Available in two, three and four door versions, the dresser has glazed doors above a base with square fielded panels on bracket feet. All of the doors come with brass locks. Available with glass shelves and internal lighting as an option.

Size shown:

H: 77" x W: 66" x D: 19½"

(H: 196 x W: 168 x D: 49cm)

Finish: "Golden Oak"



DELFT RACK Ref: 111

With moulded cornice and four spice drawers.

Size shown:

H: 40" x W: 36" x D: 7"

(H: 102 x W: 91 x

D: 18cm)

Finish: "Medium Oak"



# COMMISSIONED DRESSERS



COMMISSIONED CARVED SERVER Ref:107SP

South Wales Potboard Server with three drawers with 'Lunette' carving and fluted legs above a potboard base.

Size shown:

H: 32" x W: 60" x D: 19½"

(H: 81 x W: 152 x D: 49cm)

Finish: "Golden Oak"



COMMISSIONED DRESSER Ref:103SP

North Wales Dresser Base with three drawers above carved door panels.

Size shown:

H: 32" x W: 54" x D: 19½"

(H: 81 x W: 137 x D: 49cm)

Finish: "Medium Oak"





# OPEN LOW DRESSER

*Jacobean Style*

The Open Low Dresser is essentially a lengthened version of the side table with drawers.

Some have legs and stretchers, early versions have turned legs. In the 18th century low dressers adopted the fashionable cabriole leg.



Ref: 116A

A joined Open Low Dresser, circa 1680-1700.

Size shown:

H: 36" x W: 70½" x D: 18"

(H: 91 x W: 179 x D: 46cm)

Finish: "Medium Oak"

EIGHTEEN



ENGLISH OPEN LOW DRESSER Ref:116B

A joined Open Low Dresser, circa 1680-1700.

Size shown:

H: 36" x W: 70½" x D: 18"

(H: 91 x W: 179 x D: 46cm)

Finish: "Medium Oak"

AVAILABLE IN VARIOUS FINISHES



# QUEEN ANNE DRESSER



Detail of cabriole leg



Detail of finial

QUEEN ANNE DRESSER Ref:110A

Pelmet with pierced frieze section with moulded cornice over base with three drawers and turned finials. Cabriole legs with pad feet.

The drawers on this dresser are fully lockable with cockbeaded edges.

The cabriole leg was introduced to dresser bases in the early 18th century.

The Queen Anne Dresser has a lighter feel than the dressers from North Wales. This dresser has been influenced by the neighbouring counties of Shropshire and Warwickshire.

Size shown:

H: 84" x W: 66" x D: 19½"

(H: 213 x W: 168 x D: 49cm)

Finish: "Golden Oak"





# WINE CABINET

---

WINE CABINET

Ref:117

Features a two-door top compartment with a shelf; a pull-out shelf for serving; two drawers, and a lower cupboard with a shelf.

Size shown:

H: 49" x W: 36" x D: 18"

(H: 124 x W: 91 x D: 46cm)

Finish: "Golden Oak"



Detail of pull-out shelf



Illustrated closed





# CORNER CABINETS



CORNER CABINET

Ref:113SP

Commissioned piece: Closed corner cabinet with moulded cornice and two shelves. The lower cupboard which sits on bracket feet also has a shelf and is lockable. Finished with Burr Oak panels.

Size shown:

H: 84" x W: 48" x D: 24"

(H: 213 x W: 122 x D: 61cm)

Finish: "Medium Oak"



OPEN CORNER CABINET

Ref:113

Open top corner cabinet with moulded cornice and two shaped shelves. The lower cupboard which sits on bracket feet also has a shelf and is lockable.

Size shown:

H: 74" x W: 31" x D: 17"

(H: 188 x W: 79 x D: 43cm)

Finish: "Golden Oak"



GLAZED CORNER CABINET Ref:112

Glazed corner cabinet with moulded cornice and two shaped shelves. The lower cupboard which sits on bracket feet also has a shelf and is lockable.

Size shown:

H: 74" x W: 31" x D: 17"

(H: 188 x W: 79 x D: 43cm)

Finish: "Golden Oak"



# CARVED DRESSER BASE *Elizabethan Splendour*



Commission Ref: 102SP  
Two door cupboard with  
carving.

NORTH WALES CARVED  
DRESSER BASE Ref:109CAR

This hand-carved Eighteenth  
century Dresser Base from  
North Wales, circa 1730.  
Ornately carved with  
Elizabethan stylised flowers and  
strapwork.

Size shown:

H: 32" x W: 66" x D: 19½"

(H: 81 x W: 168 x D: 49cm)

Finish: "Golden Oak"

TWENTY TWO



Detail of carving

AVAILABLE IN VARIOUS FINISHES



# CREDENCE CABINETS



CREDENCE CABINET

Ref:118A

Based on a Low English Server, the credence cabinet has two cupboards with detailed carving above a potboard base and turned legs. Also available with plain fielded panels.

Size shown:

H: 30" x W: 42" x D: 15"  
(H: 76 x W: 107 x D: 38cm)

Finish: "Medium Oak"



COMMISSIONED PIECE

Ref:118SP

This piece is a cross between a Low English Server and a coffer, with heavy 'Lunette' carving and tulip flower design, with straight legs and stretchers. The top is hinged to give access for storage.

Size shown:

H: 31" x W: 42" x D: 15"  
(H: 78 x W: 107 x D: 38cm)

Finish: "Medium Oak"

