

1.



1. Client: Morrison Construction

Location: Blackmoorfoot Reservoir, Huddersfield
 Main Beams: Ekki hardwood
 Parapet: Hardwood - Type B
 Deck: Hardwood Hi-Grip Standard
 Size: 6.5m x 1.0m

2. Client: Yorkshire Dales National Park

Location: Rampsholme, Swaledale
 Main Beams: Hardwood
 Parapet: Hardwood - Type B
 Deck: Hardwood Hi-Grip Standard
 Size: 2 span @ 10.5m x 450mm

3. Client: Oldham MBC

Location: Oldham
 Main Beams: Hardwood
 Parapet: Hardwood - Type B
 Deck: Hardwood Hi-Grip Standard
 Size: 6.3m x 825mm

4. Client: Stockport MBC

Location: Bramhall
 Main Beams: Softwood
 Parapet: Softwood - Type B
 Deck: Softwood
 Size: 4m x 825mm

Small Pictures from top to bottom
 Kit bridge, Morrison Construction
 National Trust kit bridge, Hardcastle Craggs
 Bridge over ditch, Huddersfield
 Kit bridge for Oldham MBC

2.



3.



4.



CTS

Concrete and Timber Services Limited
 Abbey Road, Shepley, Huddersfield, West Yorkshire HD8 8BX
Tel. 01484 606416 · Fax. 01484 608763
 E-mail. enquiries@ctsbridges.co.uk
Website. www.ctsbridges.co.uk

TIMBER KIT BRIDGES

1.



STANDARD FEATURES

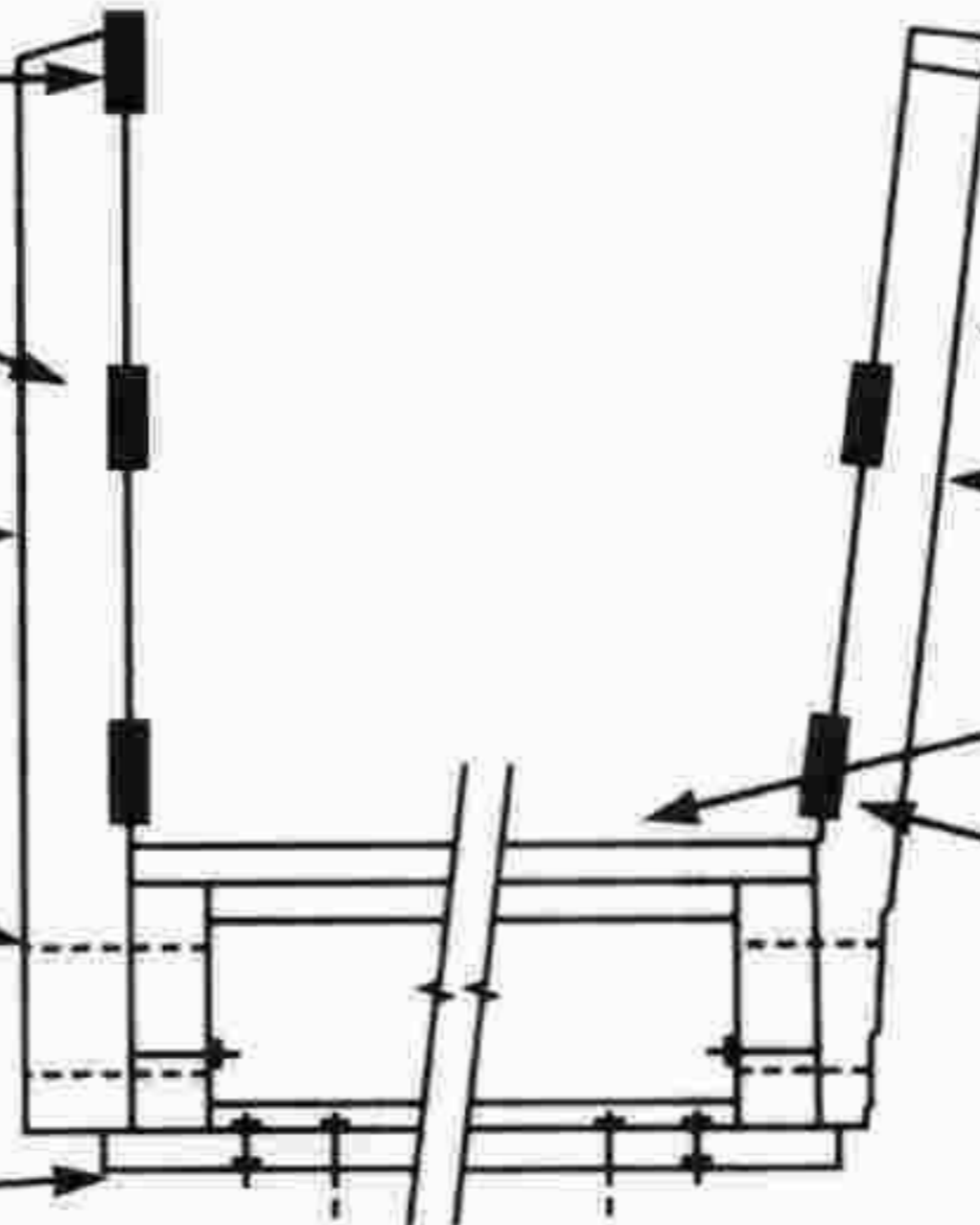
Selected timber planed with all edges rounded

All softwood treated in accordance with BS5589 for 40 year service life

All components designed in accordance with BS5400 and BS5268

All components are pre-drilled for ease of assembly

Holding down fixings and Hardwood Bearer supplied with all bridges. Provides air circulation around the critical bearing positions



OPTIONS

Choice of style of parapet

Choice of Hardwood or Tanalised Redwood

Choice of deck finish

Choice of fittings

The key benefits of a CTS kit bridge

■ Value for money:

CTS use only selected materials in the construction of their carefully detailed structures. The competitive prices reflect CTS's purchasing power as a market leader.

■ Safety to the public:

Every CTS bridge is designed in accordance with BS5400 and BS5268.

■ Vandal resistant:

A choice of anti-vandalism fixings. Replacement components are readily available should damage occur.

■ Low maintenance:

All CTS's kits require minimum maintenance to give a life in excess of 30 years.

■ Easy to assemble:

CTS's kits are supplied with easy to follow assembly instructions and drawings. All components are pre-drilled for easy assembly by unskilled labour.

■ Convenient delivery:

A nationwide delivery service is available. Delivery can be arranged on a crane waggon for easy off-loading. Up to 10 bridges can be delivered in one load making considerable cost savings.

■ Made to order:

CTS'S kits are adapted for footpaths, bridleways and cycle routes by incorporating the relevant design criteria for those types of bridges. Other 'specials' include cattle-stop gates, styles, field gates, footpath marker posts etc which can be fitted to the bridges.

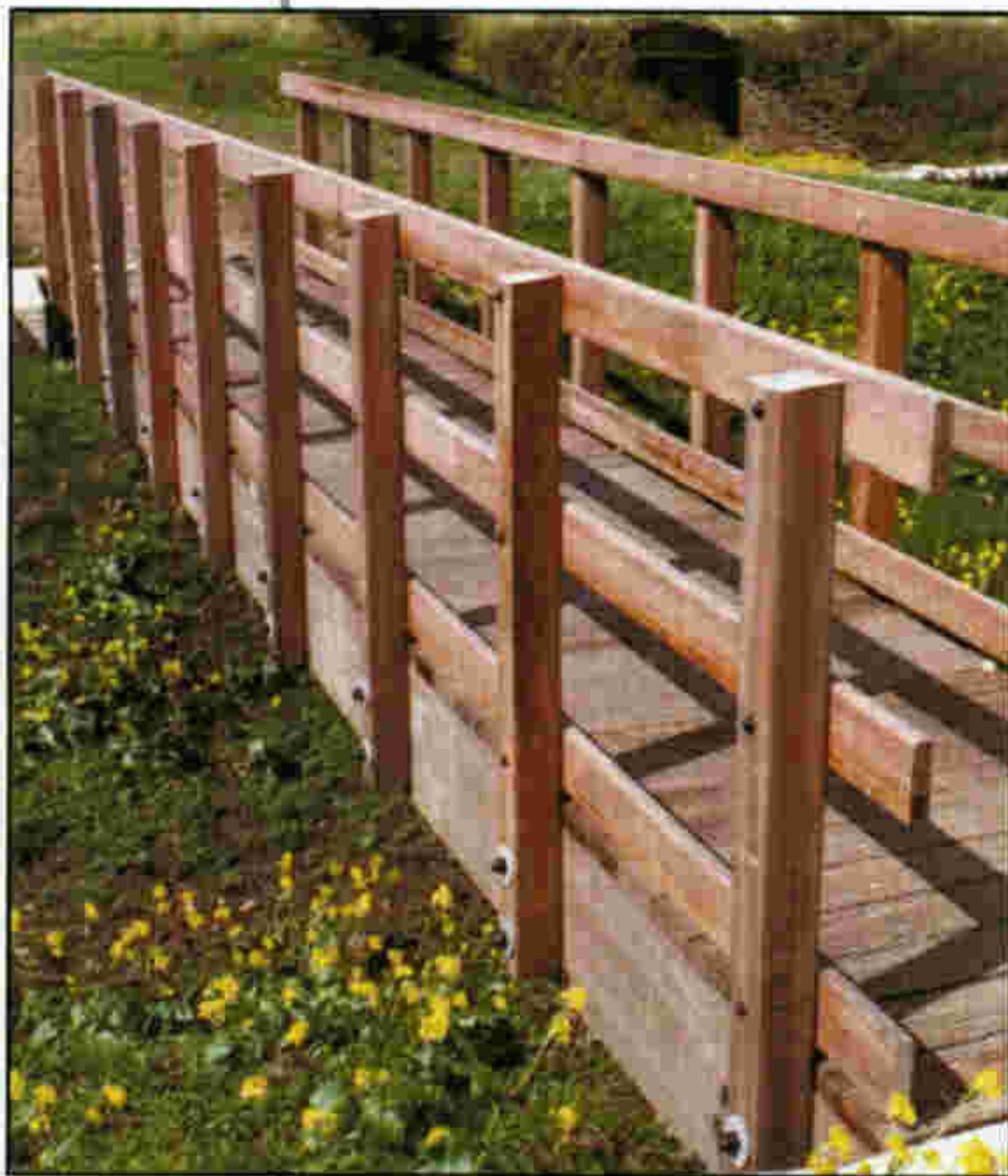
■ Design assistance:

CTS can offer advice on the most suitable type of bridge, abutment requirements and methods of installation.

CTS

Small Pictures from top to bottom
 Kit Bridge, Morrison Construction
 Kit bridge for Yorkshire Dales National Park
 Kit bridge, Oldham MBC
 Kit bridge for Stockport MBC

Concrete and Timber Services Limited
 Abbey Road, Shepley, Huddersfield, West Yorkshire HD8 8BX
Tel. 01484 606416 • Fax. 01484 608763
 E-mail. enquiries@ctsbridges.co.uk
Website. www.ctsbridges.co.uk



CTS Kit Bridges are:

- Economical
- Easy to assemble
- Vandal resistant
- Low maintenance

Sizes:

Standard Lengths from 2.7m to 10m.
Standard Widths 450mm, 825mm, 1200mm and 1500mm.

In addition to the sizes above, CTS will manufacture in other lengths and widths to suit your own particular requirements.

Design:

CTS kits are designed in accordance with BS5268 Part 2 to the loading requirements of BD37/01.

Materials:

All materials have been specifically chosen to provide structure with a service life in excess of 30 years.

Softwood:

Main beams are Douglas Fir and all other timber is Selected Kiln Dried European Redwood Preservation Treated in accordance with BS5589 to performance category A (40 year service life).

All parapet timber planed with all edges rounded.
Deck timber Hi-Grip Standard.

Hardwood:

Classified very durable. Strength Class D60.
All parapet timber planed with all edges rounded over.
Deck timber Hi-Grip Standard.

Fixings:

Tie Bars are zinc plated. Nuts, bolts, washers, nails and drive screws are galvanised.
Stainless steel fixings available to order.

Assembly:

Bridges are supplied securely packed in component form.

Holes are pre-drilled making self-assembly quick and easy using unskilled labour.

Easy to follow instructions and drawings supplied with every bridge.

Bridges can be supplied part or fully assembled if required.

Installation:

Simple concrete or timber footings are all that is required for the smaller spans. For larger spans, abutment details will depend on ground conditions. Please telephone for assistance.

All CTS's bridges are supplied complete with a timber bearer strip and holding down fixings to assist installation. Should you require, CTS can offer a full installation service.

Optional Features:

If you have special requirements, eg. a different style of parapet or fittings which need to be vandal proof, CTS will manufacture to your exact requirements.

CTS

Concrete and Timber Services Limited
Abbey Road, Shepley, Huddersfield, West Yorkshire HD8 8BX
Tel. 01484 606416 · Fax. 01484 608763
E-mail. enquiries@ctsbridges.co.uk
Website. www.ctsbridges.co.uk

