

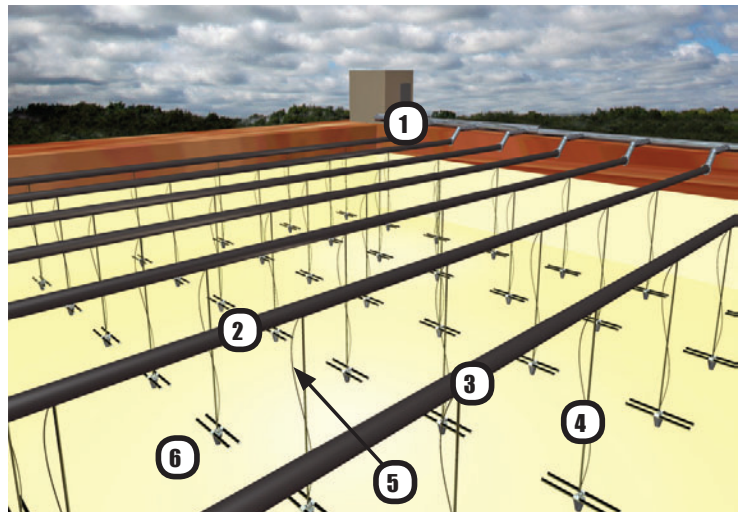
# PRODUCT SPECIFICATION SHEET

## EDI Floating Lateral

### Lagoon Aeration System

#### Unique System Configuration when System Installation and Maintenance Flexibility Required

- Air piping floats on water surface
- Accommodates variable water level applications
- High density polyethylene pipe for maximum durability
- Heavy wall piping and all welded construction including inline and branch transitions for maximum mechanical integrity
- Available with suspended diffuser assemblies for uneven floor or lined basin applications, and floor mounted diffuser assemblies for concrete and steel tanks and earthen basins with a level floor
- Multiple diffuser options including coarse bubble for low maintenance, and membrane, fine bubble, tube and panel diffusers for energy efficiency
- Field proven mechanical design with installations up to 400 m in length
- Diffuser assemblies are retrievable without taking basin off-line for maximum process reliability



- |                               |                              |
|-------------------------------|------------------------------|
| 1. Flexible Inlet Connection  | 4. Flexible Diffuser Airline |
| 2. Floating Polyethylene Pipe | 5. Retrieval Harness         |
| 3. Welded Airline Connection  | 6. Diffuser Assembly         |



## PRODUCT SPECIFICATION SHEET

EDI Floating Lateral Aeration System is an unique solution when maximum installation flexibility and maintenance is required.

The system is ideally suited for applications where the basin cannot be taken off-line for either installation or maintenance. The system floats on the water surface. Individual diffuser assemblies are fully accessible from the water surface allowing maintenance to be completed without draining the basin or interrupting the process. Suspended diffuser assemblies are available when uneven floor elevations exist or when the basin construction will not accommodate or support the diffuser assembly. Ballasted diffuser assemblies that rest on the basin floor are available for basins with level earthen, concrete or steel floors.

The EDI floating lateral aeration system is designed to withstand significant external forces from wind, heat, ice, and varying water level conditions. Each component and total integrated system is engineered for maximum system integrity and field reliability. Heavy wall, high density, polyethylene pipe and welded construction are standard for all connections. Inline and optional cross restraint cables are used to maintain the position of the components.

The mechanical design of the EDI floating lateral aeration system performance of the system has been field demonstrated. EDI has the world's largest floating lateral aeration system. This system employs laterals approaching 400 m in length and has withstood high wind conditions (greater than 100 km per hour) without mechanical damage.

The floating lateral aeration system is available with the FlexAir® diffuser for energy efficiency and low maintenance. A coarse bubble diffuser option is also available when energy efficiency is not a significant concern.



For additional information on the EDI Floating Lateral Aeration System or any EDI products, contact EDI, visit our website at [www.wastewater.com](http://www.wastewater.com) or contact a local EDI representative.



### Environmental Dynamics Inc.

5601 Paris Road • Columbia, MO 65202 USA  
+1 877.EDI.AIR8 (334.2478) +1 573.474.9456

For Parts Information:  
[parts@wastewater.com](mailto:parts@wastewater.com)  
[www.diffuserexpress.com](http://www.diffuserexpress.com)

For System Information:  
[systems@wastewater.com](mailto:systems@wastewater.com)  
[www.wastewater.com](http://www.wastewater.com)