

# Orthos

S U P P O R T

c o l l e c t i o n



BY APPOINTMENT TO  
HER MAJESTY  
QUEEN ELIZABETH II  
BEDDING AND UPHOLSTERY  
MANUFACTURERS

# HYPNOS®

THE MOST COMFORTABLE BEDS IN THE WORLD





# HYPNOS®

THE MOST COMFORTABLE BEDS IN THE WORLD

Hypnos, the fifth generation, family-run British company, has been manufacturing luxury handmade beds using traditional, time-honoured methods for over 100 years, and is renowned around the world as the expert in making handcrafted deep pocket spring beds. Combining traditional skills with constant innovation, and using only the finest materials, Hypnos has a reputation for making the most comfortable beds in the world.

Hypnos places the elements of quality and comfort above all else, with each bed individually made by master craftsmen and supported by a 10 year warranty. A Royal Warrant from Her Majesty Queen Elizabeth II reinforces Hypnos's reputation for service excellence and the very best of British quality. Indeed, Hypnos doesn't just make beds for the home, Hypnos beds can also be found around the world in the finest palaces, estates and hotels.



*Hypnos - the God of sleep.*



We spend around a third of our lives sleeping. The quality of our sleep directly influences how we feel during our waking hours. Deep, uninterrupted sleep not only rejuvenates the body and the mind, helping to improve daytime alertness and performance, but also positively improves our health and wellbeing. Hypnos prides itself on its insight into sleep, and in using this unique knowledge to design and make the most comfortable beds in the world.

Illustrated on these pages is the 180 x 200cm Hypnos Orthos 1600 Support mattress on Tan Plain Super-Storage divans. The Petra headboard is finished in Cream Faux Suede.

# Orthos

S U P P O R T  
c o l l e c t i o n

The Orthos Support Collection has been specially designed for people who prefer or require firmer support from their bed without compromising on comfort. The range considers every aspect of the sleeping experience and uses the latest ReActive pocket spring technology to balance firmer support with maximum comfort.



- The Orthos Support Collection comes in a choice of 1600, 1400 and 1200 beds with each bed providing a level of comfort and support to meet everyone's personal preference.
- Each hand crafted Orthos mattress contains ReActive pocket springs that independently move to provide total body support.



- The mattress is matched with a deep padded, non-sprung divan, to provide an extra-supportive firmer feel. The divan is hand finished with a neutral Tan Plain fabric.
- Each double sided mattress is upholstered with sumptuous layers of luxurious cotton and lambs wool, plus a layer of non allergenic white fibre and a cushion of foam, then covered with the finest Belgian Damask fabric, providing an exquisite, soft and silky sleep surface.
- The Orthos 1600 support mattress contains a cushion of memory foam to provide an additional supportive layer.
- Each mattress is traditionally hand tufted and tailored with two rows of genuine hand-stitched borders for additional edge-to-edge support.

Illustrated here is the 180 x 200cm Hypnos Orthos 1400 Support mattress on deep padded, non-sprung divans. The Felicity headboard and divans are finished in Tan Plain fabric.

# The right detail

Our extensive experience in pocket spring technology has produced many combinations of spring geometry. The Orthos Support Collection has been specially designed to provide a firmer, extra-supportive feel. Choose the spring count and comfort layers to suit your personal preference for support.

*“Remember, disturbance by your partner is one of the most common causes cited for a lack of sleep. Real luxury and great sleep normally start off with a big bed. If you sleep on your own choose our 4ft Independence size for a truly comfortable experience.”*

## Bed Sizes

Our standard bed sizes are:

<b>Single</b>	<b>90cm x 190cm</b>	<b>(3' 0" x 6' 3")</b>
<b>Independence</b>	<b>120cm x 190cm</b>	<b>(4' 0" x 6' 3")</b>
<b>Double</b>	<b>135cm x 190cm</b>	<b>(4' 6" x 6' 3")</b>
<b>Kingsize</b>	<b>150cm x 200cm</b>	<b>(5' 0" x 6' 6")</b>
<b>Super Kingsize</b>	<b>180cm x 200cm</b>	<b>(6' 0" x 6' 6")</b>

Please enquire about the production of bespoke beds and any non-standard sizes which we can make tailored to suit your specific requirements.

## Specifications

### Pocket spring counts

Single  
Independence  
Double  
Kingsize  
Super Kingsize

### Orthos 1600 Support

936  
1287  
1443  
1681  
2009

### Orthos 1400 Support

782  
1088  
1224  
1440  
1728

### Orthos 1200 Support

700  
945  
1085  
1258  
1517

### Tension option

Firm

Firm

Firm

### Comfort layers

Luxury cotton  
Lambs wool  
A cushion of memory foam  
Non allergenic white fibre

Luxury cotton  
Lambs wool and silk  
A cushion of reflex foam  
Non allergenic white fibre

Luxury cotton  
Lambs wool  
A cushion of reflex foam  
Non allergenic white fibre

### Border support

2 rows of genuine hand side stitching

2 rows of genuine hand side stitching

2 rows of genuine hand side stitching

### Finishes and fabric options

Finest Belgian Damask

Finest Belgian Damask

Finest Belgian Damask

### Turning recommendations

Seasonal turn

Seasonal turn

Seasonal turn

### Divan

Deep padded, non-sprung divan

Deep padded, non-sprung divan

Deep padded, non-sprung divan

# The finishing touches

## Choose your Headboard

Recognising that everyone has personal design and style preferences, the Hypnos Headboard Collection enables beds to be tailored to the individual and to their interior bedroom decor.

A beautifully upholstered headboard provides a bold 'silhouetted' statement to frame your bed, creating a stunning focal point and finishing touch to both the bed and the bedroom.



Whether you are looking to simply add a new headboard to your existing bed to create a luxurious new look, or you are choosing a new bed and recognise the beauty of covering the headboard and divan in the same fabric for a truly stunning look, Hypnos can provide the perfect solution.

Ask our stockist to view and feel our complete range of fabrics. Also ask for your personal copy of the Hypnos Headboard Collection brochure.



*Choosing a bed is a very personal decision.*

## Zip and Link

The Orthos Zip and Link facility provides the flexibility to split a large bed into two single beds when needed. The divans are discretely linked at the head and foot of the bed allowing the mattresses to be zipped

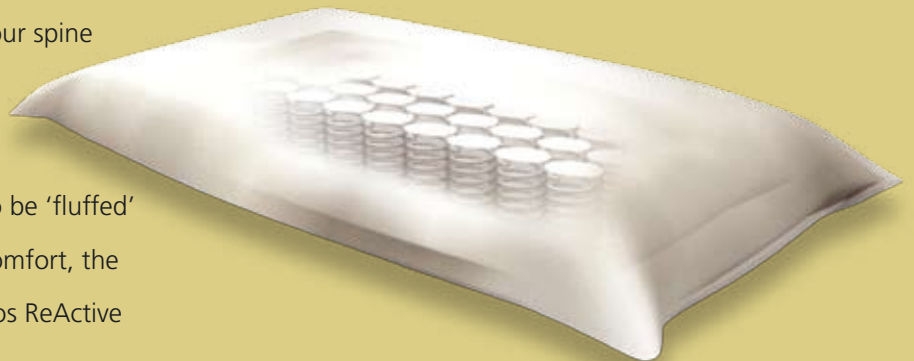
together along their full length for easy and fast conversion.



## ReActive Pillows

The Hypnos ReActive Pillow consists of over 40 individual pocket springs. It actively supports your head in the optimum position to help keep your spine straighter during sleep, regardless of how much you move in the night.

Unlike conventional pillows that need to be 'fluffed' up to regain their original feeling and comfort, the pocket spring construction allows Hypnos ReActive Pillows to instantly spring back into shape.



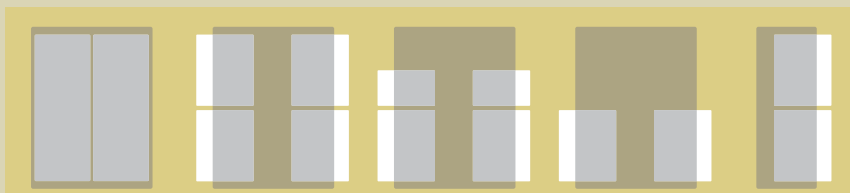




Illustrated on these pages is the 180 x 200cm Hypnos Orthos 1600 mattress on Super-Storage divans. The Felicity headboard and divans are finished in Tan Plain fabric.

## Choose your Storage Options

Our divan bases can include various configurations to accommodate your personal needs and your room.



Super-Storage divans

4 side drawers

2 Continental and 2 side drawers

2 side drawers

2 side drawers single



## 10 Year Warranty Registration

All Hypnos beds come with a 10 year quality warranty for the ultimate peace of mind.

By registering your warranty with Hypnos, you not only gain the ultimate confidence that any concerns with the quality of workmanship or materials will be resolved efficiently and quickly, but you will also receive additional information within a welcome pack, covering cleaning, care and turning advice, as well as special offers for you, your family and friends – a warranty registration card comes with your bed.

## Our Stockists

Our stockists are established businesses with a pedigree for bed retailing and friendly, knowledgeable staff.

They have many years experience in helping customers identify the right bed, with the right level of comfort and support to meet their individual needs. Details of our stockists can be found on [www.hypnosbeds.com](http://www.hypnosbeds.com)



Illustrated on this page is the 180 x 200cm Hypnos Orthos 1200 Support mattress on Super-Storage divans. The Petra headboard and divans are finished in Cream Faux Suede.

Illustrated opposite is the 180 x 200cm Hypnos Orthos 1200 Support mattress on Super-Storage divans. The Felicity headboard and divans are finished in Tan Plain fabric.



## Our Showrooms

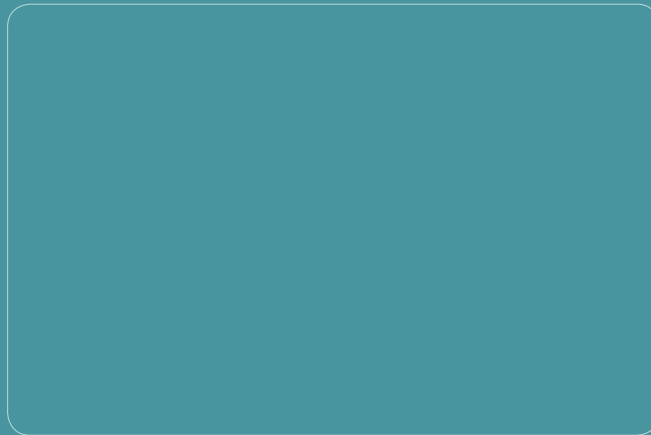
The Hypnos showrooms, in Princes Risborough, are open 6 days a week. We would welcome the opportunity to discuss your requirements and show you our extensive range of beds, including the Regency Collection, our most luxurious bed range and the Heritage Collection, offering the optimum combination of individual comfort.

While every effort has been taken to reproduce the colours of our products when making this brochure, it is not possible to guarantee perfect colour reproduction due to the limitation of the printing process. Hypnos reserves the right to alter specifications in the interests of improved design and quality.



When you have finished with this brochure please recycle it.





BY APPOINTMENT TO  
HER MAJESTY  
QUEEN ELIZABETH II  
BEDDING AND UPHOLSTERY  
MANUFACTURERS

# HYPNOS®

THE MOST COMFORTABLE BEDS IN THE WORLD

Hypnos Limited

Princes Risborough | Buckinghamshire HP27 9DN | England

T: 01844 348200 | F: 01844 346112 | E: [sleep@hypnosbeds.com](mailto:sleep@hypnosbeds.com) | [www.hypnosbeds.com](http://www.hypnosbeds.com)