

Merchant Address:



Woodcare user guide

Dulux Trade Weathershield Preservative Basecoat, Cuprinol Trade Decorative Preserver and Cuprinol Decking Protector contain acypetacs-zinc and dichlofluamid. Cuprinol Trade Dry Rot Killer for Brickwork and Masonry contains sodium ortho-phenyl-phenol. Dulux Trade Weathershield Aquatech Preservative Basecoat+ contains disodium octaborate and carbendazim. Cuprinol Trade Exterior Preserver, Cuprinol Trade Clear Wood Preserver, Cuprinol Trade Light and Dark Oak Preserver contain acypetacs-zinc. Cuprinol Trade Wood Preserver Green contains acypetacs-copper. Cuprinol Decking Seal contains dichlorophenyl dimethylurea, carbendazim and 2-octyl-2H-isothiazolin-3-one. Cuprinol Decking Cleaner contains benzalkonium chloride. Cuprinol Trade 5 Star Complete Wood Treatment contains acypetacs-zinc and permethrin. Cuprinol Trade Low Odour Woodworm Killer contains permethrin.

**READ THE LABEL BEFORE YOU BUY
USE PESTICIDES SAFELY**

Barleywood is a Trademark of Alan Titchmarsh and is used under licence.

Dulux Trade, Cuprinol Trade, Cuprinol, Landscape Shades, Timbercare, Garden Shades, Dulux, Weathershield, AP, Diamond Glaze, Aquatech and colours marked™ are trademarks of ICI® - ICI© 2005.

Bourne is a registered trademark of JohnsonDiversey Inc.

ICI Paints, Wexham Road, Slough SL2 5DS
www.duluxtrade.co.uk
www.cuprinoltrade.co.uk

T20155

The Professional's Guide to Woodcare



ICI Woodcare brings together the unbeatable strengths of Dulux Trade

Woodcare and Cuprinol Trade in one comprehensive range.

Dulux is well established in the Trade market, offering the professional the very best technical support and colour choice, whilst Cuprinol Trade has long been associated with expertise in garden and landscape applications.

By combining these strengths, ICI Woodcare offers the professional quality and choice, across a complete range of products. Superior service and support makes ICI Woodcare the natural choice for the professional.



Guide to symbols

-  Suitable for interior and exterior use
-  Suitable for interior use only
-  Suitable for exterior use only
-  Applied by brush
-  Applied by roller
-  Applied by sponge or cloth
-  Applied by cloth
-  (May be) applied by non-atomising pressure spray
-  (May be) applied by airless spray
-  (May be) dipped
-  Touch dry time in good, well ventilated drying conditions (*Figures denote time in hours)
-  Recoatable time in good, well ventilated drying conditions (*Figures denote time in hours)
-  Recoat before previous coat is dry
-  Water-based product
-  Solvent-based product

*NOTE: These figures are given for guidance only and may vary according to conditions, nature of substrate, etc.

All colours reproduced in this brochure are for guidance only, within the limitations of the printing process. The finished appearance will be influenced by the number of coats applied, the absorbency, texture, colour and general condition of the existing surface or previous coating. Colour confirmation prior to specification is advisable.

Using this Guide

This guide has been compiled to make selection from the extensive ICI Woodcare product range quick and easy. Firstly, the matrix on pages 6-7 makes it possible to find the right product for the job at a glance.



Then, full product information, including key product characteristics, colour range and pack size, is laid out in more detail. The products are grouped together according to where they are used, i.e. interior products, exterior products, etc. Each category is colour coded to help you quickly find the product you want.

Colour ranges to inspire

Increasingly colour is an essential element in design, and ICI Woodcare has used its unrivalled expertise to offer a comprehensive colour range which combines tradition with style and fashion.

If you want to enhance the beauty of the wood and complement the natural grain, choose from a wide range of Natural Wood colours. Alternatively, the semi-transparent range offers a complete palette of contemporary colours which will satisfy all the current trends in interior design, whilst still allowing the natural wood grain to show through. The opaque collection offers a range of colours, which combine the performance strengths of solid colour with the flexibility of a premium quality woodstain.

Only a selection of the vast ICI Woodcare colour range is featured in this brochure. You can find a wider range of colours in the Weathershield fandeck.

Whichever product and colour you choose from the ICI Woodcare range, you can be confident in achieving a professional job, which will look better for longer.

Product Selector

Find the right product for your job

6/7

Exterior Woodcare

Weathershield Woodstain AP	10
Weathershield Preservative Basecoat	10
Weathershield Aquatech Woodstain	11
Weathershield Aquatech Preservative Basecoat+	11
Weathershield Opaque AP	12
Weathershield Aquatech Opaque	12
Dulux Trade Protective Woodsheen	14
Dulux Trade Classic Select Woodstain	14
Cuprinol Trade Premier 5 Woodstain	15
Cuprinol Trade 5 Year Quick Drying Woodstain	15
Weathershield Yacht Varnish	18
Cuprinol Trade Yacht Varnish	18

Interior Woodcare

Dulux Trade Quick Drying Wood Dye	22
Dulux Trade Diamond Glaze	22
Cuprinol Trade Original Bourne™ Seal	23
Cuprinol Trade Quick Drying Bourne™ Seal	23
Dulux Trade Polyurethane Varnish	24
Dulux Trade Quick Drying Varnish	24
Cuprinol Trade Polyurethane Varnish	25

Cuprinol Trade Quick Drying Varnish	25
-------------------------------------	----

Landscape & Garden

Landscape Shades	30
Landscape Shades Primer	30
Garden Shades	32
Exterior Wood Preserver	34
Decorative Preserver	34
Timbercare	35
Ducksback	35
Rollable	35
Decking Stain	37
Decking Protector	38
Decking Oil	38
Decking Seal	39
Teak Oil	39
Decking Cleaner	39

Treatments & Fillers

5 Star Complete Wood Treatment	42
Woodworm Killer	42
Dry Rot Killer for Brickwork and Masonry	43
Ultra Tough Wood Filler	44
Ultra Tough Wood Hardener	44
High Performance Wood Filler	45
All Purpose Wood Filler	45
Wood Preserver Clear	46
Wood Preserver Green	46
Wood Preserver Light/Dark Oak	47

Health & Safety

Professional Advice

We know woodcare inside out

ICI Woodcare offers a fully comprehensive range of products to meet all your woodcare needs inside and outside.

To make product selection easier, we have grouped products together, according to where they are used. We have also used colour coding to make selection even simpler.

EXTERIOR

TREATMENTS & FILLERS

INTERIOR

LANDSCAPE & GARDEN

WOODCARE

PRODUCT SELECTOR

KEY:

S = Solvent-based
W = Water-based

● = Recommended
○ = Can also be used for purpose (or method) indicated

PRODUCTS

EXTERIOR WOODCARE

Weathershield Woodstain AP S	●	○	●					○	○	○	○	●	
Weathershield Preservative Basecoat S	●	○	●					○	○	○	○	●	
Weathershield Aquatech Woodstain S	●	○	●					●	●	●	●	●	
Weathershield Aquatech Preservative Basecoat+ W	●	○	●					●	●	●	●	●	
Weathershield Opaque AP S	●	○	●					●	●	●	●	○	
Weathershield Aquatech Opaque W	●	○	●					●	●	●	●	○	
Dulux Trade Protective Woodsheen S	●	○	●		●			○	○	○	○	●	
Dulux Trade Classic Select Woodstain S	●	●	○	○				●	●	●	●	○	●
Cuprinol Trade Premier 5 Woodstain S	●	○	●					○	○	○	○	●	
Cuprinol Trade 5 Year Quick Drying Woodstain W	●		●					○	○			●	
Weathershield Yacht Varnish S	●	○	●					○	○		○	○	
Cuprinol Trade Yacht Varnish S	●	○	●					○	○		○	○	

INTERIOR WOODCARE

Dulux Trade Quick Drying Wood Dye W	●	●	●	●	●		●					●	
Dulux Trade Diamond Glaze W	●	○	○	○	●		○					●	
Cuprinol Trade Original Bourne Seal S	●	●	●	●	●							●	
Cuprinol Trade Quick Drying Bourne Seal W	●	●	○	○			○					●	
Dulux Trade Polyurethane Varnish S	●	●	●	●	●		●					●	
Dulux Trade Quick Drying Varnish W	●	●	●	●	●		●					●	
Cuprinol Trade Polyurethane Varnish S	●	●	●	●	●		●					●	
Cuprinol Trade Quick Drying Varnish W	●	●	●	●	●		●					●	

LANDSCAPE & GARDEN

Landscape Shades W	●	●	●					●	●	●	●		●
Landscape Shades Primer W	●	●	●								○		●
Garden Shades W	●	●	●								○		●
Exterior Wood Preserver S	●	●	●					●	●	●	●		●
Decorative Preserver S	●	●	●					○	●	●	●		●
Timbercare W		●	●							●	○		●
Ducksback W		●	●							●	●		●
Rollable W		●	●							●	●		●
Decking Stain S	●							○	○	●	●		●
Decking Protector S	●												●
Decking Oil S	●												●
Decking Seal W	●												●
Teak Oil S	●												●
Decking Cleaner W	●												●

TREATMENTS & FILLERS

5 Star Complete Wood Treatment S	●	●	●	●	●	●	●	●	●	●	●	●	●
Woodworm Killer S	●	●	●	●	●	●	●	○	○				●
Dry Rot Killer for Brickwork & Masonry W													●
Ultra Tough Wood Filler S	●	●	●	●	●	●	●	●	●	●	●	●	●
Ultra Tough Wood Hardener S	●	●	●	●	●	●	●	●	●	●	●	●	●
High Performance Wood Filler S	●	●	●	●	●	●	○	○	○	○	○	○	●
All Purpose Wood Filler W	●	●	●	●	●	●	○	○	○	○	○	○	●
Wood Preserver Clear S	●	●	●	●	●	●	●	●	●	●	●	●	●
Wood Preserver Green S	●	●	●	○		●	○	○	○	○			●
Wood Preserver Light/Dark Oak S	●	●	●	○	●	●	○	○	○	○			○

WOOD TYPE

Joinery/plained Wood	Sawn Wood	Plywood/Chipboard
●	○	○

WOOD FUNCTION

Windows/Doors	Floors	Panelling/Beams	Joists and Rafters	Bargeboards/Soffits	Fascias/Cladding	Fencing/Sheeds	Gates	Garden Furniture	Decking
●				○	○	○	○	○	

KEY PRODUCT FUNCTION

Kills Rot	Kills Woodworm/ Woodboring Insects	Preserves against rot	Preserves against woodworm	Protective Coating	Decorative	Repair
		●		●	●	

INT/EXT

For Interior use	For Exterior use
○	●

EXTERIOR WOODCARE



Wood in an exterior environment has very different needs and requirements to interior wood. The main requirement of an exterior coating is to protect the substrate from the harmful effects of the weather and its other natural enemies, whilst enhancing the natural beauty of the wood.

Exterior coatings need to be flexible enough to cope with natural wood movement, without cracking, flaking or peeling.

The ICI Woodcare exterior range has many options to choose from. The products are suitable for both hard and softwoods and are available in a variety of finishes.

The following pages show the range of products you can choose from to do a professional job on all exterior timber and joinery. All ICI products combine quality, durability and with superior coverage, represent excellent value for money.





A medium build, semi-transparent satin finish for exterior joinery

Weathershield Woodstain AP (Advanced Protection)

- Exceptional durability - up to 6 years protection
- Highly flexible finish
- Excellent water repellency
- Suitable for hardwoods and softwoods
- Now looks better for longer

Colour Choice:

See colour chart page 16

Pack Sizes:

1 litre, 2.5 litre, 5 litre

Coverage:

Smooth wood:

20sq.m./litre/coat (normally 2 coats)



A solvent-based preservative basecoat for new and bare wood

Weathershield Preservative Basecoat

- Preserves, penetrates and seals
- Protects against blue stain rot and UV rays
- Provides a sound base for Weathershield Woodstain AP, Weathershield Opaque AP, Weathershield Yacht Varnish and Protective Woodsheen

Pack Sizes:

1 litre, 2.5 litre, 5 litre

Coverage:

Smooth wood:

25sq.m./litre/coat (normally 1 coat)



Recoat within 2 hours or when fully dry



A medium build, water-based, semi-transparent satin finish for exterior joinery

Weathershield Aquatech Woodstain

- Exceptional durability - up to 6 years protection
- Highly flexible finish resists peeling, flaking and blistering
- Quick drying - recoatable in 2 hours

Colour Choice:

See colour chart page 16

Pack Sizes:

1 litre, 2.5 litre, 5 litre

Coverage:

Smooth wood:

20sq.m./litre/coat (normally 2 coats)



Water-based preservative and primer for new and bare wood

Weathershield Aquatech Preservative Basecoat+

- Preserves, penetrates and seals
- Quick drying - recoatable in 2 hours
- Protects against rot and UV rays
- Provides a sound base for Weathershield Aquatech Woodstain and Weathershield Aquatech Opaque

Pack Sizes:

1 litre, 2.5 litre

Coverage:

Smooth wood:

12sq.m./litre/coat (normally 1 coat)



The ICI Woodcare Opaque Range combines the benefits of a premium quality woodstain with the appearance of solid colour. Available in water-based and solvent-based formulations, opaques can be used to transform old, previously painted or stained wood whilst maintaining its natural beauty. They can also be used on new wood to achieve a contemporary look.



A medium build opaque satin finish for exterior joinery

Weathershield Opaque AP (Advanced Protection)

- Exceptional durability - up to 6 years protection
- Highly flexible opaque finish resists peeling, flaking and blistering
- Excellent water repellency
- Suitable for hardwoods and softwoods
- Now looks better for longer

Colour Choice:

See colour chart page 13

Pack Sizes:

1 litre, 2.5 litre, 5 litre

Coverage:

Smooth wood:

20sq.m./litre/coat (normally 2 coats)



Weathershield Aquatech Opaque

- Exceptional durability - up to 6 years protection
- Highly flexible opaque finish resists peeling, flaking and blistering
- Quick drying - recoatable in 2 hours
- Suitable for hardwoods and softwoods

Colour Choice:

See colour chart page 13

Pack Sizes:

1 litre, 2.5 litre, 5 litre

Coverage:

Smooth wood:

20sq.m./litre/coat (normally 2 coats)



Opaque Colour Range



Available in the following products: Weathershield Opaque AP, Weathershield Aquatech Opaque and Landscape Shades. 600 solid colours from the full range of over 1200 colours can be found in the Weathershield fandeck available from Trade Technical Advice Centre on 0870 242 1100.



SP Special processes are required for some strong colours to achieve full covering power. Use 2 coats over 1 coat Goosewing for all colours marked SP, except Citrus Twist, marked SP*, use 2 coats over 1 coat White.



A medium build, semi-transparent satin finish for exterior and interior joinery

Dulux Trade Protective Woodsheen

- Offers up to 4 years exterior protection
- Flexes with the wood to resist cracking, flaking and peeling
- Suitable for hardwoods and softwoods

Colour Choice:

See colour chart pages 16 & 26

Pack Sizes:

1 litre, 2.5 litre, 5 litre

Coverage:

Smooth wood:

25sq.m./litre/coat (normally 2 coats)



A low build, semi-transparent matt finish woodstain

Dulux Trade Classic Select Woodstain

- Offers up to 4 years protection
- Deep penetrating woodstain which will not blister or flake
- Suitable for smooth planed wood and rough sawn timber

Colour Choice:

See colour chart page 16

Pack Sizes:

1 litre, 2.5 litre, 5 litre

Coverage:

Smooth wood:

14sq.m./litre/coat (normally 2 coats)

Coverage is reduced on sawn or weathered wood



A medium build, semi-transparent satin finish woodstain

Cuprinol Trade Premier 5 Woodstain

- Offers up to 5 years protection
- Flexible finish to resist flaking and peeling
- Excellent vapour permeability
- UV resistant finish

Colour Choice:

See colour chart pages 16 & 17

Pack Sizes:

1 litre, 2.5 litre, 5 litre

Coverage:

Smooth wood:

20sq.m./litre/coat (normally 2-3 coats)



A semi-transparent satin finish woodstain

Cuprinol Trade 5 Year Quick Drying Woodstain

- Tough and durable protection for 5 years
- For use on bare or previously stained exterior planed wood
- Quick drying

Colour Choice:

See colour chart page 16

Pack Sizes:

1 litre, 2.5 litre

Coverage:

Smooth wood:

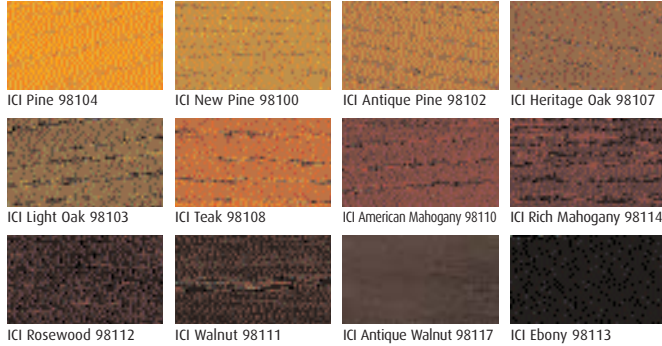
20sq.m./litre/coat



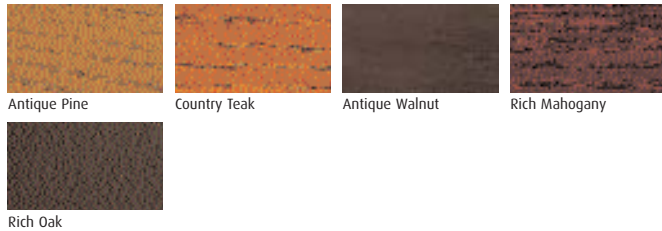
Natural Wood Colour Range



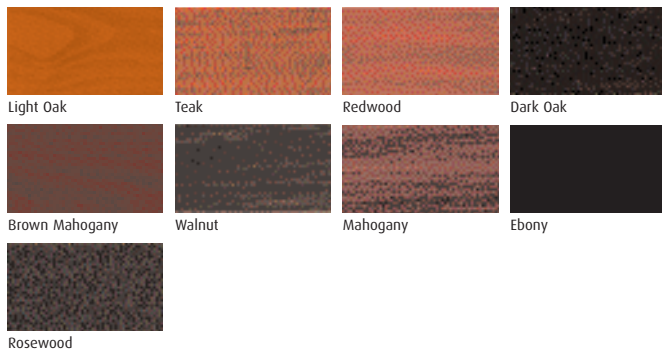
Available in the following products: Weathershield Woodstain AP, Weathershield Aquatech Woodstain, Dulux Trade Protective Woodsheen, Dulux Trade Diamond Glaze & Dulux Trade Classic Select Woodstain



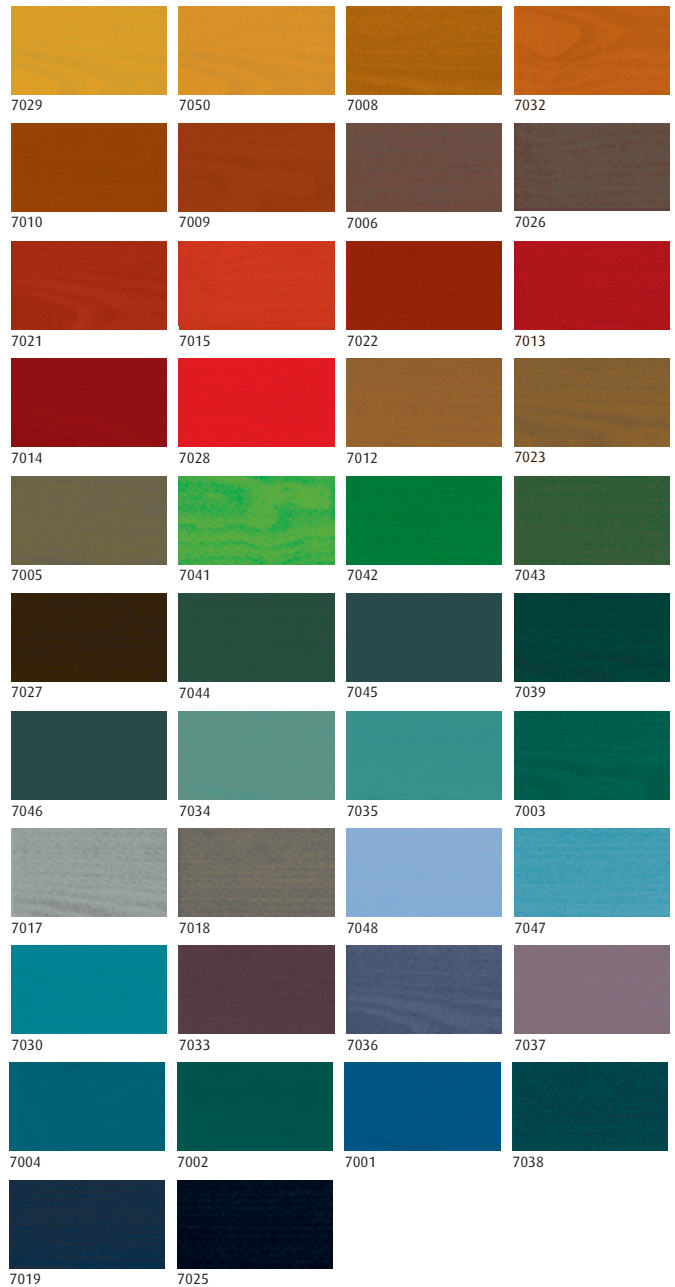
Cuprinol Trade 5 Year Quick Drying Woodstain



Cuprinol Trade Premier 5 Woodstain (Standard Colour Range)



Cuprinol Trade Premier 5 Woodstain (Tinted Colours)





**A premium high
build gloss varnish**

Weathershield Yacht Varnish

- 3 years protection
- Durable and flexible film, which resists cracking, flaking and peeling
- Contains UV filters which protect against strong sunlight

Finish:

Clear Gloss

Pack Sizes:

1 litre, 2.5 litre

Coverage:

Smooth wood:

16sq.m./litre/coat

(normally 2-3 coats on new/bare wood)



**A high build
gloss varnish**

Cuprinol Trade Yacht Varnish

- Weather resistant solvent-based varnish
- Clear flexible finish
- Ideal for sealing hardwood doors

Finish:

Clear Gloss

Pack Sizes:

1 litre, 2.5 litre, 5 litre

Coverage:

Smooth wood:

15sq.m./litre/coat (normally 3 coats)



The choice is clear

The Dulux Trade Colour Preview Strip is brilliantly simple: a transparent strip - overprinted with Natural Wood Colours - which you simply place on the wood to see how a given shade is likely to look once applied.

The twelve Dulux Trade Natural Wood Colours included on the strip are represented as accurately as possible. As each strip carries both the colour name and tinting reference number, it's clearly a very handy tool to have and adds reassurance for your customers!

**Visit your local merchant for your free
preview strip!**



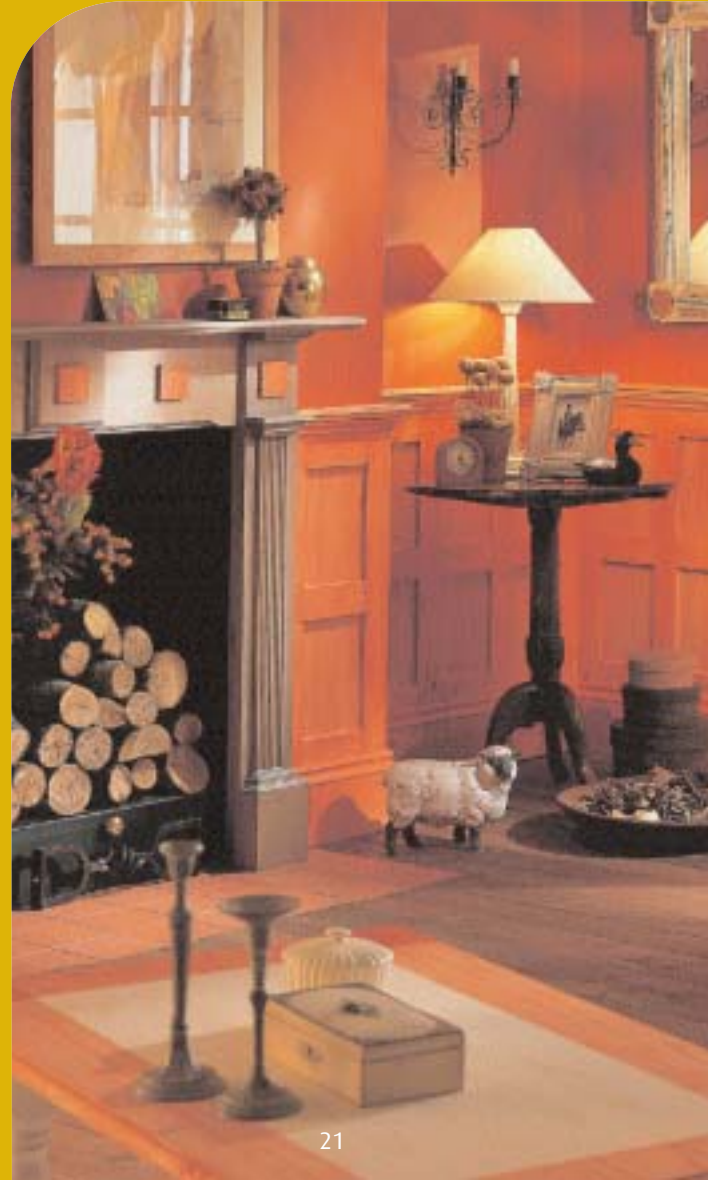
INTERIOR WOODCARE



Interior Wood is used for many different purposes, and is subject to all sorts of wear and tear - ICI Woodcare can offer a solution, whatever the situation.

The comprehensive range of interior products comprises both solvent and water-based options. As ICI Woodcare leads the way with innovative, technically excellent products such as Diamond Glaze, which is 10 times tougher than conventional varnish; you can be sure that your interior wood from floor to ceiling, will look better for longer.

However demanding and specialist the job, ICI Woodcare has more ways to protect and enhance interior wood surfaces.





Quick drying water-based wood dye to decorate interior wood

Dulux Trade Quick Drying Wood Dye

- For interior hardwoods, softwoods and plywood
- Resists fading & enhances the natural grain of the wood
- Low odour formula - touch dry in 30 minutes

Colour Choice:

5 Natural Wood colours
See colour chart page 26

Pack Sizes:

500ml

Coverage:

Smooth wood:
Up to 18sq.m./litre/coat



Maximum durability, medium build water-based lacquer, available in gloss and satin finishes

Dulux Trade Diamond Glaze

- For all high wear interior wood surfaces, especially floors
- Up to 10 times tougher than conventional varnish*
- Water-based, quick drying - recoat in 2-4 hours
- One pack system - reduces waste

Colour Choice:

See colour chart pages 16 & 26
Colours only available in satin finish**

Pack Sizes:

1 litre, 2.5 litre, 5 litre

Coverage:

Smooth wood:
Up to 25sq.m./litre/coat
(normally 2-3 coats on new/bare wood)**



*10 times tougher than conventional varnish, based on tests undertaken with the use of R.E.L. testing equipment

**Depth of colour:

Clear Finish: Apply three finishing coats of clear satin or gloss.
Translucent Colour: Apply one coat of colour followed by two coats of clear (satin or gloss).

Deeper colour: Apply two coats of colour and one coat of clear (satin or gloss).



Durable, high build interior floor seal available in clear gloss finish

Cuprinol Trade Original Bourne™ Seal

- For interior wood, cork and concrete flooring
- Slip resistant
- Hard wearing and resists petrol, hydrocarbons and water solutions

Pack Sizes:

1 litre, 2.5 litre, 5 litre

Coverage:

Smooth wood:
12sq.m./litre/coat
(normally 2-3 coats on new/bare wood;
1-2 coats on varnished/sealed wood)
Concrete:
8sq.m./litre/coat (normally 2-3 coats)



Durable, medium build water-based interior floor seal available in clear gloss and satin finishes

Cuprinol Trade Quick Drying Bourne™ Seal

- For interior wood and cork surfaces
- Hard wearing, durable and scratch resistant
- Low odour
- Quick drying for rapid job completion

Pack Sizes:

1 litre, 2.5 litre, 5 litre

Coverage:

Smooth wood:
20sq.m./litre/coat
(normally 3 coats on new/bare wood; 2 coats on varnished/sealed wood)



Bourne is a registered trademark of JohnsonDiversey Inc.



Premium high build interior varnish, available in matt, gloss and satin finishes

Dulux Trade Polyurethane Varnish

- Translucent solvent-based finish
- Withstands knocks, scuffs and spills
- Can be used on bare or previously varnished surfaces, or over wood dye

Pack Sizes:

1 litre, 2.5 litre, 5 litre

Coverage:

Smooth wood:

16sq.m./litre/coat (normally 1-2 coats)



Premium medium build water-based interior varnish, available in gloss and satin finishes

Dulux Trade Quick Drying Varnish

- Contains polyurethane
- Touch dry in 30 minutes - re-coat in 2 hours
- Can be used on bare or previously varnished surfaces, or over wood dye

Colour Choice:

See colour chart page 26

Colours only available in satin finish

Pack Sizes:

1 litre, 2.5 litre

Coverage:

Smooth wood:

20sq.m./litre/coat

(normally 2-3 coats on new/bare wood)



High build interior varnish, available in matt, gloss and satin finishes

Cuprinol Trade Polyurethane Varnish

- Tough and durable
- Resists scratches, heat and alcohol
- Can be used on bare or previously varnished surfaces, or over wood dye

Pack Sizes:

1 litre, 2.5 litre, 5 litre*

*Clear gloss only

Coverage:

Smooth wood:

15sq.m./litre/coat

(normally 3 coats on new/bare wood;

2 coats on varnished/sealed wood)



Medium build water-based interior varnish, available in gloss and satin finishes

Cuprinol Trade Quick Drying Varnish

- For interior wood, cork and veneer
- Rapid job completion: minimal disruption
- Resistant to wear, heat, moisture and most household chemicals
- Can be used on bare or previously varnished surfaces, or over wood dye

Colour choice:

6 standard + a wide range of tinted colours

See colour chart page 27

Colours only available in satin finish

Pack Sizes:

500ml, 1 litre, 2.5 litre

Coverage:

Smooth wood:

20sq.m./litre/coat

(normally 3 coats on new/bare wood;

2 coats on varnished/sealed wood)

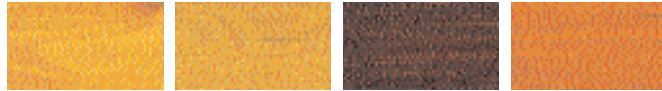


Natural Wood Colour Range

Available in the following products: Dulux Trade Diamond Glaze, Dulux Trade Protective Woodsheen, Dulux Trade Polyurethane Varnish & Dulux Trade Quick Drying Varnish. For colours see page 16



Dulux Trade Quick Drying Wood Dye



ICI Pine ICI Antique Pine ICI Antique Walnut ICI Teak



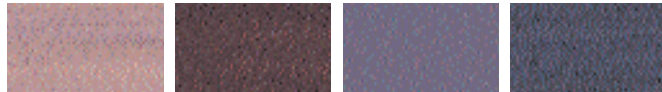
ICI Rich Mahogany

Designer Colour Range

Available in the following products: Dulux Trade Diamond Glaze, Dulux Trade Quick Drying Varnish and Dulux Trade Protective Woodsheen



Gypsophila Soft Smoke Silvery Shadow Black Pepper



Lilac Haze Chinese Mulberry* Aubergine Kiss Wild Grape



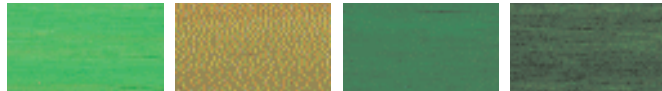
Blue Opal Pacific Baltic Prussian Blue



Washed Denim Aqua Reef Ink



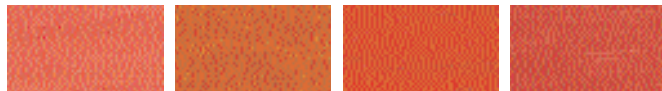
Mellow Jade Avocado Broccoli Aspen



Meadow Fresh Leaf Apple* Ivy Leaf



Boston Pine Ochre* Saffron Sizzle French Oak*



Rose Cedar Glow Red Rock* Raspberry

Cuprinol Trade Quick Drying Varnish (Standard Colours)



Antique Pine English Oak Rich Teak American Walnut



Brown Mahogany Deep Mahogany

Cuprinol Trade Quick Drying Varnish (Tinted Colours)



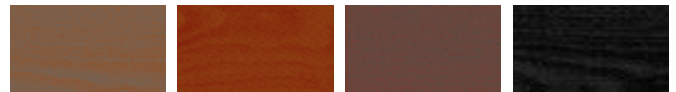
A selection of the colours available via tinting are shown below



6813 6844 6850 6819



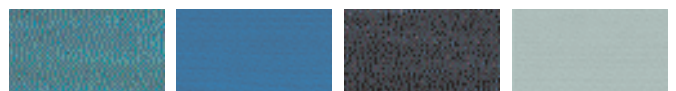
6831 6816 6808 6804



6834 6849 6809 6806



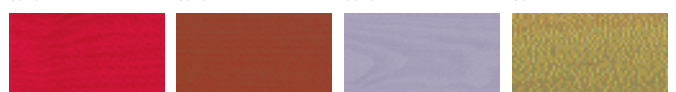
6820 6837 6801 6811



6833 6815 6807 6805



6840 6828 6818 6812



6826 6843 6803 6836



6814 6835 6821 6825

*Only the colours marked with an asterisk are suitable for exterior use in Dulux Trade Protective Woodsheen and Dulux Trade Classic Select Woodstain.

LANDSCAPE & GARDEN



In recent years wood has become an increasingly important landscaping feature. From decking in private gardens to timber architectural features in public spaces, there is a big demand for colour and advanced protection.

Cuprinol has always been synonymous with quality products for landscape and garden wood finishes. This makes the ICI Woodcare range the best option for both rough sawn and smooth planed timber, wherever it is. A wide product choice, quality formulations and an extensive colour range ensure long lasting good looks with optimum protection.





A high opacity, water-based medium build matt finish

Landscape Shades

- Exceptional durability - up to 8 years
- Highly flexible
- Water-based - safe for use near plants
- High opacity - covers weathered creosote and can also be used on new work
- Suitable for fencing & garden architecture including concrete structures, for example, Supreme Strongcast fencing products



Colour Choice:

5 standard. See colour chart page 31

Pack Sizes:

2.5 litre, 5 litre

Coverage:

Smooth wood:

12sq.m./litre/coat (normally 2 coats)

Sawn wood:

6sq.m./litre/coat (normally 2 coats)



Landscape Shades Primer

- For use on bare wood to prevent wood staining on white and pastel colours
- Flexible, water repellent & UV resistant

Colour Choice:

White only

Pack Sizes:

2.5 litre

Coverage:

Smooth wood:

12sq.m./litre/coat (normally 2 coats)

Sawn wood:

6sq.m./litre/coat (normally 2 coats)

Allow 24 hours before overcoating with Landscape Shades



A primer for use under lighter Landscape Shades to prevent discolouration from natural extractives

Landscape Shades (Standard Colours)



White



Chestnut



Conker



Black



Holly

Landscape Shades (Opaque Colours)



600 solid colours from the full range of over 1200 colours can be found in the Weathershield fandeck available from **Trade Technical Advice Centre 0870 242 1100.**



Spanish Brown



Hot Tikka



Coral Island



Dusty Plains



Poppy **SP**



Cherryade **SP**



Fizzy Pink



Cornish Butter



Burnt Arizona **SP**



Embers **SP**



Catalan Yellow **SP**



Pure Sand



Highland Green



Leafy Lane



Santa Fe



Citrus Twist **SP**



Blue Oasis



Celtic Cross



Dartmoor Green



Peppermint Tea



Vintage Denim



Ceramic Blue



Calm Waters



Frosted Ice



Black Forest **SP**



Grape



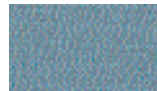
Lilac Lace



Tidal Wave



Jet Black



Missile Grey



Cold Steel



White

The Garden Shades colour offering provides either contemporary colours from the original Garden Shades or classic traditional colours in the Heritage Garden Shades.



Garden Shades

- Fade resistant
- High opacity - covers weathered creosote
- Water-based - safe for use near plants & low odour
- For smooth planed or rough sawn wood
- Suitable for fencing & garden architecture

Colour Choice:

Available in a range of modern colours. See colour chart page 33

Pack Sizes:

1 litre, 2.5 litre, 5 litre

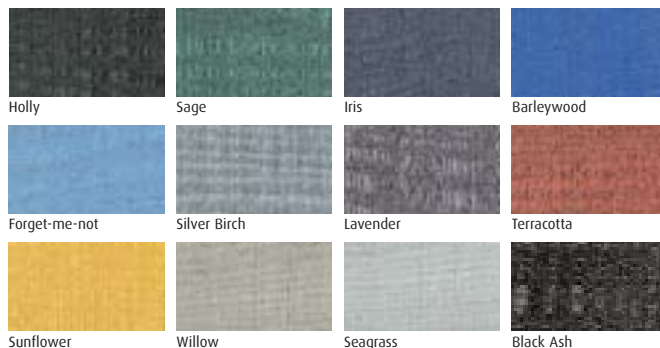
Coverage:

Smooth planed wood:
20sq.m./litre/coat (normally 2 coats)
Sawn wood:
10sq.m./litre/coat (normally 2 coats)



**A high opacity,
water-based
medium build
fade-resistant
matt finish**

Garden Shades



Heritage Shades





A coloured penetrating wood preserver

Exterior Wood Preserver

- Gives long lasting protection against weather and rot
- Harmless to plants when dry
- Water repellent
- Ideal for fence posts, fences, gates and sheds
- Suitable for smooth planed and rough sawn timber

Colour Choice:

5 colours. See colour chart page 36

Pack Sizes:

2.5 litre, 5 litre, 25 litre

Coverage:

Brush/Spray:

(2-3 coats) 4sq.m./litre - above ground dipping:

1-24 hrs - less than 4sq.m./litre - in ground contact



A high quality pigmented preserver with rich long lasting colours

Decorative Preserver

- Resists fading and bleaching for 5 years
- Water repellent
- Protects against rot and fungal staining
- Will not flake or peel
- Ideal for house cladding, extensions, fencing, sheds and greenhouses
- Harmless to plants when dry

Colour Choice:

5 colours + Red Cedar. See colour chart page 36

Pack Sizes:

5 litre, 20 litre

Coverage:

Smooth wood:

12sq.m./litre/coat (normally 2 coats)

Sawn or weathered wood:

8sq.m./litre/coat (normally 1-2 coats)



A water-based decorative treatment for rough sawn wood

Timbercare

- 6 times longer lasting colour than creosote
- 30% greater coverage than creosote
- Harmless to plants and animals
- Water repellent and weather resistant

Colour Choice:

6 colours. See colour chart page 36

Pack Sizes:

5 litre, 7.5 litre, 9 litre

Coverage:

Sawn wood:

6sq.m./litre/coat (normally 1-2 coats)



A water based decorative waterproofer for rough sawn fences and sheds

Ducksback

- Offers up to 5 years protection
- Wax enriched formula
- Protects against green algae
- Harmless to plants and animals
- Low odour
- High opacity

Colour Choice:

6 colours. See colour chart page 36

Pack Sizes:

5 litre

Coverage:

Sawn wood:

6sq.m./litre/coat (normally 1-2 coats)



A roller applied water-based shed & fence treatment

Rollable

- Formulated specifically for roller application
- Twice as fast as a brush
- Colours and protects rough sawn wood
- Wax enriched, water repellent
- Colour lasts 6 times longer than creosote

Colour Choice:

6 colours. See colour chart page 36

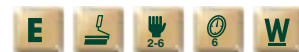
Pack Sizes:

7 litre

Coverage:

Sawn wood:

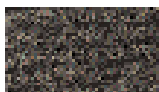
3-4sq.m./litre/coat (normally 1 coat)



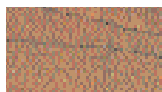
Trade Exterior Wood Preserver



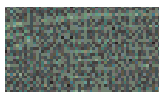
Golden Brown



Chestnut



Acorn Brown



Rustic Green



Black

Trade Decorative Preserver



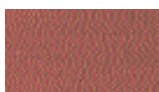
Red Cedar



Black Oak



Autumn Brown



English Mahogany



Country Oak



Spruce Green

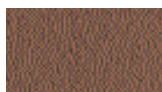
Timbercare



Autumn Gold



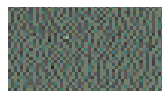
Rich Oak



Rustic Brown



Autumn Red



Woodland Green



Black

Rollable & Ducksback



Autumn Russet



Forest Green



Red Cedar



Forest Oak



Harvest Brown



Harvest Gold

Cuprinol's Decking Range will help keep a deck looking its best, with products to clean, colour and protect decking all year round.



A low build, semi-transparent matt finish to colour and protect decking

Decking Stain

- Tough and durable
- Water repellent - helps prevent decking splitting and cracking
- Vapour permeable - resists cracking, peeling and flaking
- UV resistant
- For all types of new and existing decking

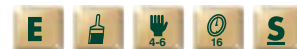
Pack Sizes:

2.5 litre

Coverage:

Smooth wood:

25sq.m./litre/coat (normally 3 coats)



Colour choice



Driftwood



Newport Blue



Vermont Green



Atlantic Spray



Cedar Fall



Boston Teak



Hampshire Oak



Golden Maple



American Mahogany



Seaport Blue



A clear penetrating treatment for all types of decking

Decking Protector

- Long lasting protection against weather and decay
- Unique triple action formula
 - ◆ High performance waterproofer
 - ◆ Deep penetrating preservation
 - ◆ Protects against mould and algae
- Not designed to be overcoated with decorative finishes

Colour Choice:

Available in Clear, Rustic Oak and Golden Teak

Pack Sizes:

5 litre

Coverage:

Smooth wood:

16-20sq.m./litre/coat (normally 2 coats)



A rich natural oil to nourish and protect garden decking

Decking Oil

- Traditional way to revitalise weathered wood
- Penetrates and replaces natural oils
- Increases water repellency
- Lightly tinted formula for natural colour

Colour Choice:

Available in Natural Oak, Natural Pine and Natural Cedar

Pack Sizes:

2.5 litre and 5 litre

Coverage:

Smooth wood:

20sq.m./litre/coat (normally 2 coats)



A quick drying, clear water repellent seal to protect garden decking

Decking Seal

- Contains fungicide to prevent algae, mould and fungal growth
- Helps prevent wood cracking and splitting
- Wax enriched formula to keep decking cleaner and drier
- Harmless to plants and animals
- Not designed to be overcoated with decorative finishes

Pack Sizes:

5 litre

Coverage:

Smooth wood:

16sq.m./litre/coat (normally 2 coats)



A rich natural matt finish for teak and other hardwoods

Teak Oil

- Restores and maintains hardwoods
- Replaces natural oils lost through weathering
- Ideal for garden furniture

Finish:

Natural Matt

Pack Sizes:

500ml, 500ml aerosol & 1 litre

Coverage:

As required



A fast, effective cleaner specially formulated to remove algae, fungi, dirt and grease

Decking Cleaner

- Powerful, non-bleaching action
- Kills mould and algae and protects against re-growth
- Ideal for use before decking treatments

Pack Sizes:

2.5 litre

Coverage:

Up to 8sq.m./litre



SP Special processes are required for some strong colours to achieve full covering power.
Use 2 coats over 1 coat Goosewing for all colours marked **SP**, except Citrus Twist, marked **SP**[®], use 2 coats over 1 coat White.



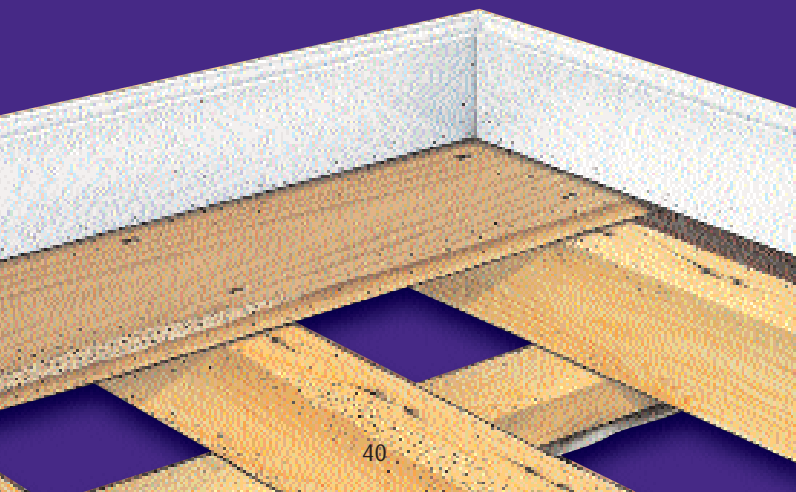
TREATMENTS & FILLERS

Before applying any decorative coating, it is essential to make good any defects, treat difficult areas and protect against any potential problems. ICI Woodcare has a comprehensive range of preservers, treatments and fillers formulated to offer the professional a solution for every situation.

For all causes of rot and infestation there is an answer in the ICI Woodcare range; from multi-purpose products such as 5 Star Complete Wood Treatment which takes care of dry rot, wet rot and woodworm to the specifically formulated Dry Rot Killer for Brickwork and Masonry.

Whatever the defect in the wood, it can be rectified; from hardener for decayed and degraded wood to fillers which can be nailed, screwed, sanded, stained or painted.

So whatever the problem ICI Woodcare has the product to prevent and cure it.





5 Star Complete Wood Treatment

- Eradicates dry rot, wet rot, and insect attack
- Prevents re-infestation
- Low odour formula
- Can be painted, stained, varnished or polished when dry

Pack Sizes:

2.5 litre, 5 litre, 25 litre

Coverage:

Brush/Spray: (2-3 coats)
 4-8sq.m./litre interior - for sound wood
 4sq.m./litre interior - for decay and infestation
 4-8sq.m./litre exterior - above ground
 Dipping:
 1-24 hours - less than 4sq.m./litre
 - in ground contact



A colourless, deep penetrating, multi-purpose treatment for dry rot, wet rot and woodworm



Woodworm Killer

- Eradicates woodworm and prevents re-infestation
- Can be used on structural timbers and furniture
- Can be painted, stained, varnished or polished when dry

Pack Sizes:

2.5 litre, 5 litre, 25 litre
 (250ml and 400ml) aerosols

*with injector nozzle

Coverage:

Brush/Spray: (2-3 coats)
 4-8sq.m./litre interior - for sound wood
 4sq.m./litre interior - for decay and infestation
 4-8sq.m./litre exterior - above ground



A colourless treatment for use against all forms of woodworm attack



Dry Rot Killer for Brickwork & Masonry

- To eradicate and prevent the spread of dry rot
- Effective in treatment of brick, stone, mortar, concrete, plaster, rubble, etc
- Effective in damp conditions

Pack Size:

5 litre

Coverage:

Brush/Spray:
 1sq.m./litre (with injection as required)



A colourless anti-fungal treatment formulated for use against dry rot





A fast setting, high performance, two part wood filler

Ultra Tough Wood Filler

- Gives permanent weather resistant repair
- Can be screwed, sanded, filled and painted
- Resists shrinking, splitting and cracking
- Fills holes of any size or depth
(under normal conditions)

Colour Choice:

Natural and White

Pack Sizes:

250gm, 500gm, 750gm

Coverage:

As required



Cuprinol Trade Ultra Tough Wood Filler catalyst tubes now available for sale separately in 40g tubes for use in conjunction with Cuprinol Trade Ultra Tough Wood Filler.



Provides a firm base for filling and repairs in joinery

Ultra Tough Wood Hardener

- Strengthens, hardens and binds loose wood fibres in decayed wood
- Use in conjunction with Cuprinol Ultra Tough Wood Filler to achieve a long lasting repair

Pack Sizes:

500ml

Coverage:

As required (normally 2-3 coats)



A tough, durable one pack wood filler for small repairs

High Performance Wood Filler

- Formulated for repairing small cracks, holes, gaps and nail holes
- Quick-drying and hardwearing
- Can be nailed, screwed, sanded, painted, stained or varnished when dry

Colour Choice:

125ml available in Natural, Antique Pine and Mahogany, 250ml available in Natural

Pack Sizes:

125ml, 250ml

Coverage:

As required



A tough, durable solvent-free wood filler for small repairs

All Purpose Wood Filler

- Solvent-free, low odour
- Formulated to flex with the natural movement of wood
- Can be sanded when dry
- Can be painted, stained or varnished
- Non-flammable

Colour Choice:

250ml tub available in Natural and White, 500ml tub available in Natural, 310ml cartridge tubes available in Natural, Antique Pine & Mahogany.

Pack Sizes:

310ml cartridge tube; 250ml, 500ml tubs

Coverage:

As required





Wood Preserver Clear

- Long lasting protection
- Deep penetrating
- Does not affect colour of wood when dry
- Can be painted, stained, varnished or polished when dry

Pack Sizes:

2.5 litre, 5 litre, 25 litre

Coverage:

Brush/Spray: (2-3 coats)
 4-8sq.m./litre interior - for sound wood
 4-8sq.m./litre exterior wood - above ground
 Dipping:
 1-24 hours - less than 4sq.m./litre -
 in ground contact



Colourless all purpose preserver for the protection of sound wood against rot, decay and woodworm



Wood Preserver Green

- Deep penetrating
- Coloured to identify treated areas
- For horticultural and other structural timbers
- Harmless to plants when dry
 (Where wood is to be overpainted Wood Preserver Clear is recommended)

Pack Sizes:

2.5 litre, 5 litre, 25 litre

Coverage:

Brush/Spray: (2-3 coats)
 4-8sq.m./litre interior - for sound wood
 4-8sq.m./litre exterior wood - above ground
 Dipping:
 1-24 hours - less than 4sq.m./litre -
 in ground contact



A general purpose coloured preserver for the protection of sound wood against rot and woodworm



Wood Preserver Light Oak/Dark Oak

- Deep penetrating
- Can be varnished or polished when dry
- Harmless to plants when dry

Pack Sizes:

2.5 litre, 5 litre, 25 litre

Coverage:

Brush/Spray: (2-3 coats)
 4-8sq.m./litre interior - for sound wood
 4-8sq.m./litre exterior wood - above ground
 Dipping:
 1-24 hours - less than 4sq.m./litre -
 in ground contact



A general purpose oak coloured preserver for the protection of sound wood against rot and woodworm



ICI Woodcare has a clear commitment to offer the best possible choice of high quality products, with clear guidance on their safe and effective use. This information enables the professional to evaluate the product benefits, environmental impact and the health and safety issues before making a choice.

Precautions

Please observe all precautions, and refer to the health and safety information provided before use and storage. Application by brush, conventional or airless spray and immersion should only be undertaken as recommended on the container.

COSHH/CHIP

The Control of Substances Hazardous to Health Regulations 1999 and Chemicals (Hazard Information and Packaging for Supply) Regulations 2002 lay down statutory measures for the control of risks to health. These include occupational exposure limits for certain ingredients, such as white spirit.

Working with water-based coatings

Where possible, for large interior areas, such as floors, water-based coatings should be selected in preference to solvent-based coatings.

Solvent-based coatings

When solvent-based coatings are applied to trim areas such as doors and windows, and when used outside, solvent vapours do not present a problem, provided they are correctly applied in accordance with the can instructions.

Product data sheets and health and safety data sheets are available from ICI.

Whenever you need information or advice, ICI are happy to provide professional support and technical assistance.

For literature requests, technical advice and product specifications please contact:

Trade Technical Advice Centre

ICI Paints

Wexham Road

Slough

SL2 5DS

Telephone: 0870 242 1100

Websites: www.duluxtrade.co.uk

www.cuprinoltrade.co.uk

E-mail: duluxtrade_advice@ici.com

cuprinoltrade_advice@ici.com

For all consumer enquiries on products and stockists contact:

Dulux Advice Centre

Telephone: 01753 550 555

For details of the Dulux Trade approved decorator scheme please contact:

Dulux Select Decorators

Telephone: 0845 769 7668

Website: www.duluxselect.co.uk



Your local ICI Woodcare stockist is on hand to discuss all your product and service needs.