



**KEMCOTE**  
liquid coatings for floors & walls



## COATINGS FOR ALL APPLICATIONS

**Kemcote floor and wall coatings provide cost-effective solutions for a wide range of applications, using highly durable, resin-based materials that are both easy to apply and highly resistant to wear and abrasion.**

Developed through many years of experience by Kemper – one of Europe's leading manufacturers of specialist surfacing materials – our coatings offer attractive decorative finishes and a choice of surface repair products, sealants and industrial coatings. Technical performance options include protection against chemicals, heat, oil or moisture and all provide an exceptionally strong, reliable and long-lasting surface - whether for repair and maintenance or newbuild projects.





***Kemcote - for clean, durable protection all round*** Kemcote is more than just another surface coating, it's a whole family of technically advanced solutions to protect floors and walls and improve their surface performance.

Kemper's liquid technology is renowned - a proven range of resin-based materials from the purely functional to the highly decorative, suitable for various substrates and applications, and with solvent-free products also available.

***The Kemcote approach*** Because no two jobs are ever the same, we work with you from the outset to identify the most suitable, cost-effective and reliable coating for your project. Our support is available throughout the project to ensure your performance or design objectives are always met.

***The Kemcote difference*** Unlike 'one size fits all' solutions, Kemcote products have each been designed to suit different applications. This means a better engineered and technically superior product, installed by trained, approved contractors and backed by the experience of the world's leading supplier of liquid applied waterproofing and coating systems.

***More than just a pretty face*** Kemcote floor and wall products improve surface performance, with increased resistance to mechanical wear, chemicals, oil, grease and water as needed - as well as reducing dust and making cleaning easier, quicker and more hygienic. Coloured finishes are available for either decorative effect or demarcation, including our designer range of terrazzo flooring.

***Take the risk out of surface coating*** Kemcote products are subject to the most rigorous product testing - proven both in the laboratory and in practice. With installations throughout the world - many in the critical and demanding applications of the food or pharmaceutical industries - you can rest assured when you've specified Kemcote.

KEMCOTE

# FLOOR COATINGS

Industrial floor coatings may be applied to new or existing floors to enhance strength, improve performance and reduce damage or wear caused by vehicular and pedestrian traffic.

In addition to reducing dust, treatments can also be specified which will protect against a range of substances, including water, oil, grease and chemicals as well as offering slip-resistance, area demarcation and aesthetic finishes.

Kemcote resin based coating systems are extremely durable; the correct preparation and application will maximize the long term strength and performance of the substrate.

## **Applications**

Kemcote products are suitable for a wide range of applications:

### *Surface performance:*

For industrial floors onto a range of substrates, including new or existing surfaces subject to preparation and priming. High build, self-levelling and thin coat treatments are available to enhance performance.

For walls, surface sealers and topcoats can be applied to create a non-absorbant, easily cleanable surface that will withstand cleaning chemicals and resist mould growth to meet hygiene and sanitary requirements.

### *Surface appearance:*

Aesthetic glazed resin floor finishes are available for commercial and retail applications where a decorative appearance is required.

Tiles and other ceramic finishes can be overglazed with Kemcote CMK Coeramik to refresh the appearance and change the colour scheme.

## **Features and benefits**

- Easy to apply
- Durable and long-lasting
- Proven performance
- Anti-slip
- Chemical, oil, grease and water resistance
- Reduces dust
- Solvent-free options



## PRIMERS

For the best adhesion and performance all floor surfaces should be properly prepared and primed prior to application of the finishing coat.

### *KEMCOTE MU*

A solvent-free, low viscosity epoxy primer that can be used for a range of purposes and onto various substrates including self-levelling and trowelled mortars.

### *KEMCOTE MS*

A one-part polyurethane based primer that is suitable for mineral substrates, or as a high penetration sealer for cement based floors.

### *KEMCOTE EC*

A water soluble epoxy resin based primer designed for wet substrates.

## SEALERS

### *KEMCOTE CSE Surface sealer*

Based on water-dilutable epoxy resins and applied in a single coat to produce a semi-gloss finish, Kemcote CSE impregnates the concrete substrate to seal the floor and provide an anti-dust surface that is resistant to oil.

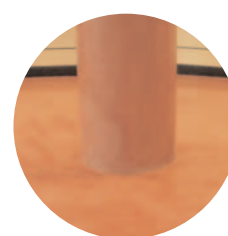
### *KEMCOTE JSEP Joint sealer*

A self-levelling epoxy-polyurethane joint sealer with excellent technical performance, suited for use on a broad range of industrial floor applications as a flexible expansion joint sealer with high strength.

## SURFACE REPAIR

### *KEMCOTE EM*

This versatile, three-part epoxy mortar is quickly and easily prepared for use and can be used to repair holes or damaged floor areas prior to priming. It has excellent adhesion and may be applied in thicknesses up to 30mm in each single layer.





## FLOOR COATINGS

### *KEMCOTE TFE*

This is a water-soluble, roller applied epoxy resin coating that provides excellent mechanical resistance for floors subject to light-to-medium vehicular traffic. Kemcote TFE can also be applied as a two-coat finish for high-build applications.

### *KEMCOTE TFP*

A one-component, coloured, moisture-curing, polyurethane-based sealant with low solvent content that has high mechanical resistance and is suited to car parks and underground applications.

### *KEMCOTE HBE High build*

A solvent-free, epoxy coating for concrete floors that gives excellent protection against oil and chemicals and suppresses dust. Its strong and durable high-build finish (0.5 mm) makes it suitable for areas subject to heavy vehicular traffic.

### *KEMCOTE SLE Self levelling*

A self-levelling epoxy coating which gives a finished thickness of 1mm-3mm with typical applications in the food, electronics or pharmaceutical applications, where sterile or hygienic areas need to be preserved. With excellent mechanical and chemical protection, it withstands spills or aggressive cleaning and inhibits dust formation.

### *KEMCOTE SLP Self levelling*

A low-viscosity, self-levelling, polyurethane-based coating that is solvent-free and suitable for outdoor use or where a tough, abrasion or chemical-resistant floor is required. It can be applied onto most substrates including concrete, asphalt, wood, plastic or metal.

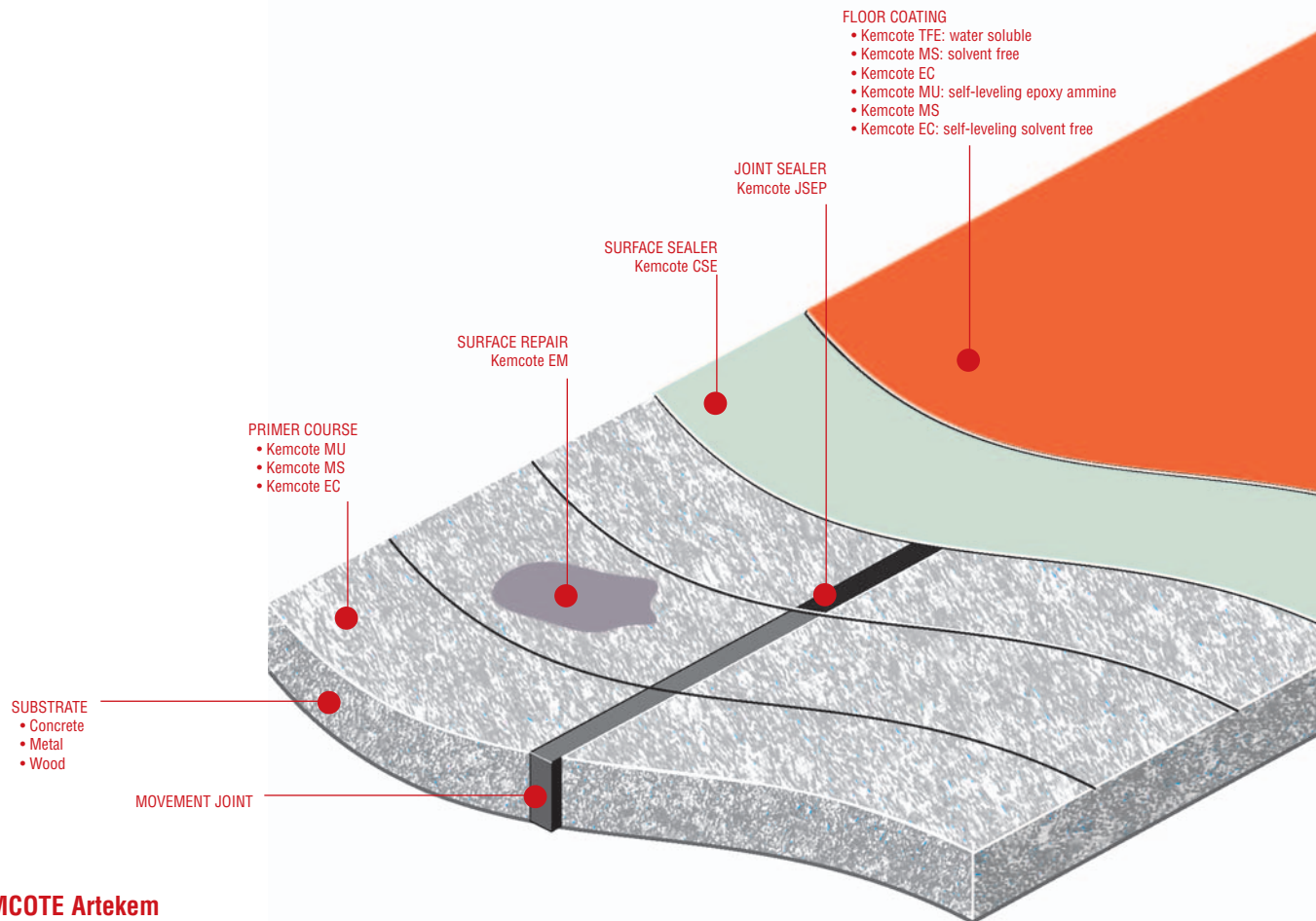
### *KEMCOTE SLPQ Self levelling*

A self-levelling, solvent-free, epoxy polyurethane resin with quartz aggregates, producing a finished thickness of 2.5mm - 5mm. Its easily cleaned, anti-dust properties and excellent resistance to chemicals make it suitable for food and pharmaceutical applications where medium-heavy mechanical wear or vehicular traffic are anticipated.



KEMCOTE TECHNICAL ADVICE 01925 445532

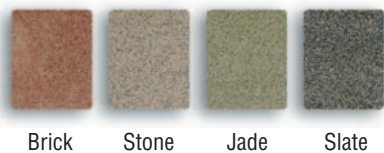




### KEMCOTE Artekem

A resin-based decorative flooring system for office, leisure or retail that is ultra hard wearing and produces a distinctive marble 'terrazzo' effect with a high gloss finish. Artekem has excellent crack resistance and so can be used on large flooring areas with structural or movement joints.

#### Standard Colours:



### KEMCOTE Dekoral

A hard-wearing, three-part decorative floor system suited to office, leisure or retail applications and with a range of optional colours. Applied onto concrete or wooden floors a matt or gloss surface can be achieved as well as various finishing treatments.

#### Standard Colours:



KEMCOTE TECHNICAL ADVICE 01925 445532

# WALL COATINGS

Kemper's range of wall coatings includes decorative and functional products that can be applied onto new substrates or to refurbish existing materials, including cement, concrete or metal surfaces. They provide enhanced protection and create an easily cleanable surface that can be washed and disinfected - making them ideal for use in industries where a clean or sterile environment is required. The range includes solvent-free, odourless products that can be applied without the risk of contamination or the need for plant shutdown.

Kemcote CMK Coeramik is a complete system for recovering tired, it is quick to apply and gives a fresh, new appearance that is a cost-effective alternative to re-tiling and can be completed with minimal disruption or inconvenience. Available in a complete range of colours, including tile joint strips, this is a proven and durable liquid coating that is equally suited to floor or wall tiles.



### **Applications**

Hygienic wall coatings are typically used to provide a smooth, continuous covering to a wide range of substrates in order to create a glazed finish with enhanced performance that can be easily cleaned. As well as sealing absorbent or friable surfaces, reducing the creation or accumulation of dust, these coatings are formulated to give high resistance to cleaning chemicals and also inhibit mould growth. This makes them particularly suited for use in food processing and production, confectionery and pharmaceutical manufacturing.



The Kemcote CMK Coeramik tile glazing system can be applied universally wherever existing wall or floor tiles require upgrading, to improve appearance or match new design schemes.

### **Features and benefits**

#### **Hygienic range**

- Solvent-free
- Easy to apply
- Durable and long-lasting
- Gloss or matt finishes available
- Creates cleanable, hygienic surface
- Mould-resistant

#### **Decorative range**

- Applied over existing tiles
- Range of standard / non-standard colours
- Suitable for wall and floor tiles
- Gloss or silk finishes
- Suitable for all ceramic tiles or surfaces
- One-part, odourless and solvent-free
- Quick and easy to apply



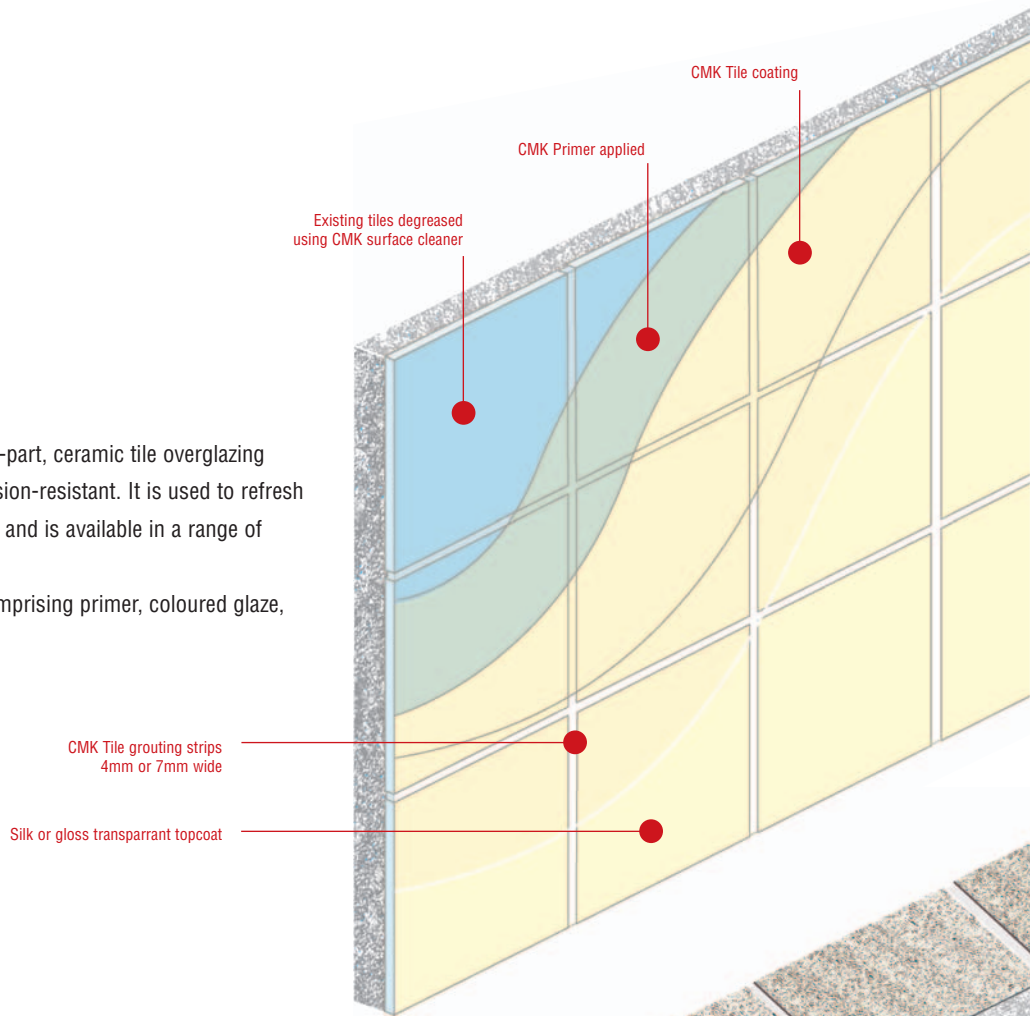


## TILE COATING

### *KEMCOTE CMK Coeramik*

Kemcote CMK Coeramik is an odourless, one-part, ceramic tile overglazing system that is durable, long-lasting and abrasion-resistant. It is used to refresh the appearance of existing wall and floor tiles and is available in a range of standard

or bespoke colours as a complete system comprising primer, coloured glaze, grouting strips and silk or gloss topcoat.



## WALL COATINGS

### *KEMCOTE WXE*

A solvent-free epoxy coating for cement, concrete or metal surfaces which both seals and glazes to give a smooth, easily cleanable finish that is highly resistant to sanitary fluids and chemicals.

### *KEMCOTE VXE*

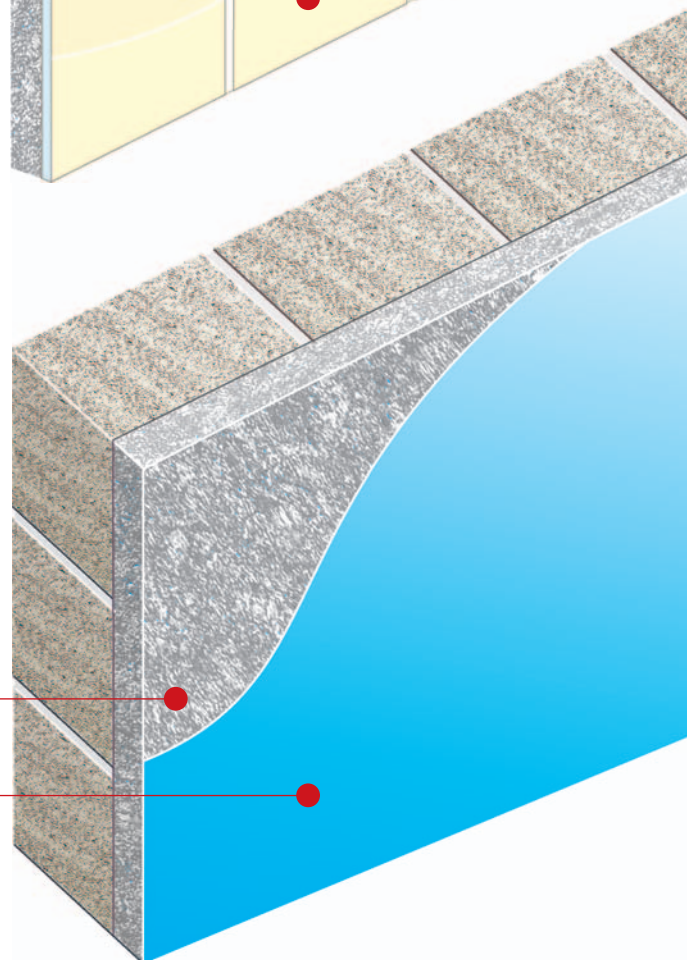
A water-emulsified glazing that forms a continuous coating over new or existing walls, sealing the substrate to produce an (optional) gloss or matt finish that is mould-proof and can be easily cleaned or disinfected.

SUBSTRATE

- Plaster/cement
- Metal
- Concrete

KEMCOTE SURFACE COATING

- Kemcote WXE
- Kemcote VXE



Kemcote wall coatings can be used on a range of substrates including concrete or cement-based renders, plaster and metal.

## ***Technical Support***

We offer a comprehensive advisory service on all projects from design through to completion. Contact us at an early stage with details of the project or application and we will advise on the most appropriate and cost-effective Kencote product to meet your design and performance requirements. Detailed written recommendations for preparation and treatment will be supplied where needed.



A RIBA approved CPD seminar programme is available to architectural practices on request.

## ***Installation and Service***

All Kemcote products are installed by fully-trained, independent contractors covering the whole of the UK. Site visits are undertaken as necessary to confirm product selection and to help ensure a totally dependable solution whilst additional on-site training will be arranged where special treatment might be required. This personalised service, the option of a choice of Kemcote products and our ability to provide bespoke performance solutions for specific applications means users are assured of a more durable, long-lasting and reliable system.



**KEMPER  
SYSTEM**  
A KEMCO Company

Kemper System Limited, Kemper House, Mill Lane, Winwick Quay, Warrington, Cheshire WA2 8RJ  
Tel: **01925 445532** Fax: **01925 575096**  
Email: [enquiries@kempersystem.co.uk](mailto:enquiries@kempersystem.co.uk) Web: [www.kempersystem.co.uk](http://www.kempersystem.co.uk)



UNITED KINGDOM | GERMANY | FRANCE | NETHERLANDS | ITALY | USA | INDIA | CHINA | JAPAN