

L O S T



A R T



## FOUNTAINS

RESTORATION – CONSERVATION  
RE-INSTATEMENT



Redditch:  
St Stevens Square

A Coalbrookdale fountain installed in 1883 and  
apparently in very good condition.

The statue at the top of the fountain was also cast by  
Coalbrookdale from an original sculpture produced  
by the Wills Brothers of London.

The removal of the fountain to the Lost Art workshop revealed that, despite an earlier attempt at restoration in 1982 (not by Lost Art), corrosion was well under way and that a number of components of the fountain were missing.



Back at the Lost Art workshops, the components of the fountain could be cleaned and identified.



Where elements of the fountain no longer existed, the use of historical records, such as photographs allowed for reproduction of the pieces.

The first step for this was for the Lost Art wood carver to produce a replica of the particular component.



Lost Art also retain the services of an excellent pattern maker – again allowing for the reproduction of component parts.



This allows for high quality castings to be produced retaining the detail shown in the original pieces.



The Lost Art partner foundry is also chosen for their skill in producing high quality castings, reproducing the type of detail for which the Victorian foundries were famed.



Once components had been cleaned and, where necessary reproduced, then checking and reassembly could begin.

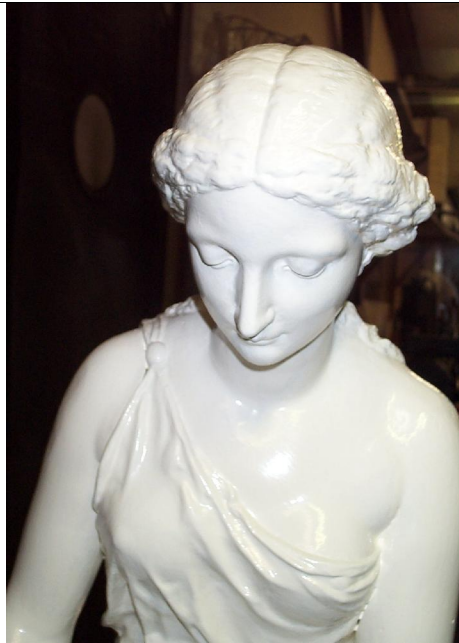


Examination of the areas of the fountain unaffected by the earlier attempt at restoration, plus consultation of historical records from the Coalbrookdale factory revealed the original colour scheme.



First reassembly in the Lost Art workshop also provided reference images for the full reinstatement on site.

Particular attention was paid to the crowning glory of the fountain.





Reassembly progressed in easy stages.



Finished beautifully.



And a justifiably proud team.



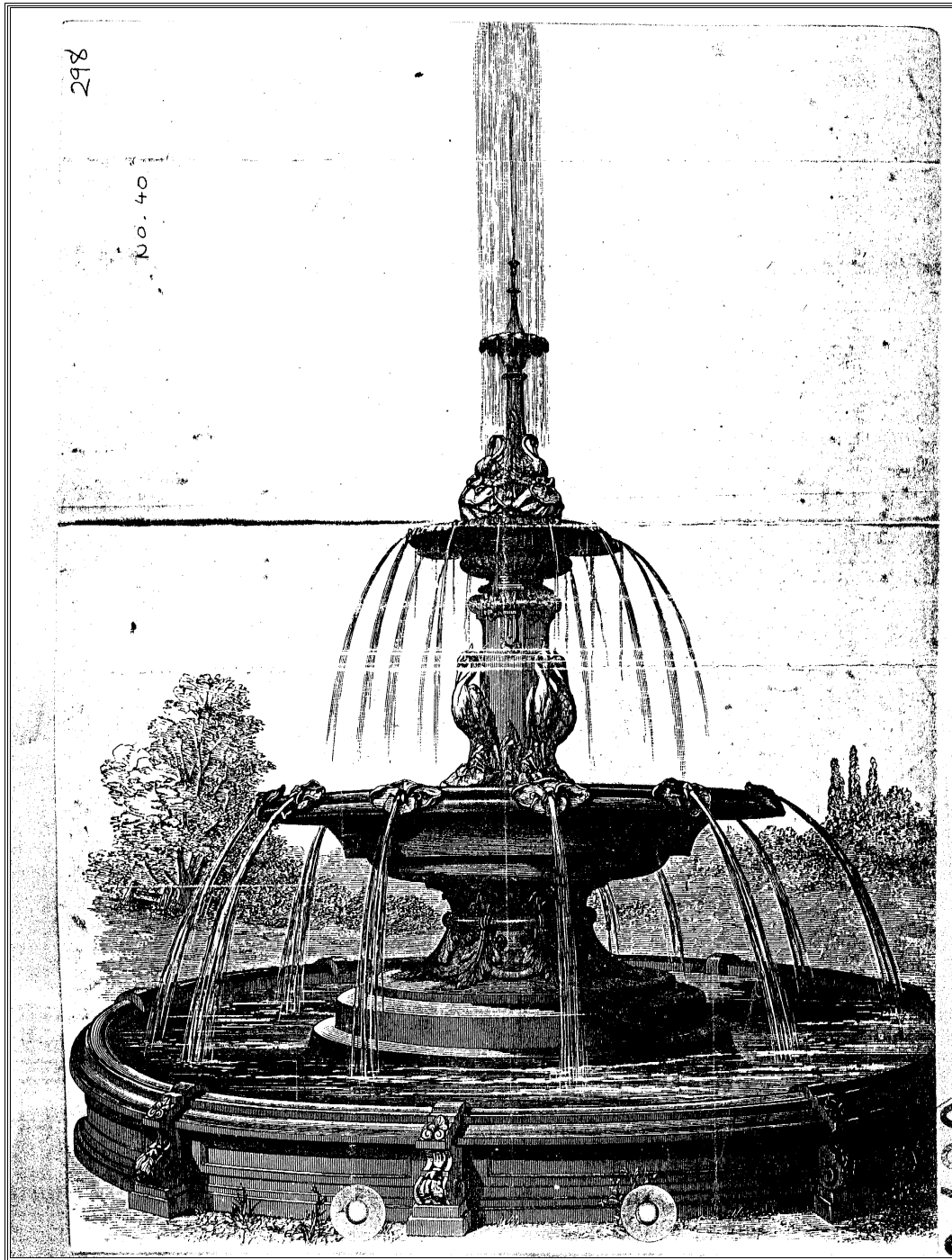


Looking good by night.



*Another of our projects.*

The fountain in Albert Park, Middlesborough was fully restored to former glories. At the start of the project, only the bottom bowl remained. Working from archive records and historic documents, we were able to fully recreate the magnificent fountain shown above.



Lost Art maintain a library of drawings, photographs and castings of historic fountains. Many manufacturers, such as Coalbrookdale, produced fountains containing common components, but in different combinations. For example, elements of the fountain in Albert Park, Middlesbrough also appear in the Redditch fountain shown in the photopanel.

Such historical documents allow the Lost Art craftsmen to reproduce parts missing from existing fountains, or even to replace a complete fountain.

**A SELECTION OF OTHER SKILLS AND SERVICES FROM LOST ART**



Fencing and railings



Seating and benches



Cast and wrought iron



Traditional carpentry



Bespoke landscape furniture



Blacksmithing and whitesmithing

1 Yewdale  
Crescent  
Wigan  
Lancashire  
WN6 7HD

L O S T      A R T



T: 01257 464601  
F: 01257 464601  
office@lost-art.co.uk  
www.lost-art.co.uk

**PRIMARY CONTACT: DOMINIC LIPTROT**