



INDIVIDUAL

# *Ceramic*

DESIGNS

Decorative Ceramics,  
Murals  
&  
Tile Panels



## ■ Manor Architectural Ceramics Ltd

Manor Architectural Ceramics Ltd (MAC) is an English company based in Warwick that designs, manufactures and decorates ceramic products. By combining handcrafting skills with modern technology, we deliver custom and personalised ceramic items ranging from tiles to tableware sets for a wide range of individual customers and industries at affordable prices.

## ■ Product & Services

This brochure presents our products and services relating to the decoration of ceramic glazed surfaces, with particular relevance to decorative tiles and tile panels for wall and architectural decor.

We specialize in:

## ■ SURFACE DECORATION

The decoration of glazed ceramic surfaces with art, text and graphics of any design. Customers can supply photographs and artwork, commission our network of artists or request a search for particular genres, artists or works of art available through the many museums and organisations we have licensing arrangements with.

We use unique ceramic toners in combination with high speed state-of-the-art digital printing technology to produce high quality permanent art on ceramic surfaces.

## ■ 3-DIMENSIONAL ARCHITECTURAL CERAMICS

Innovative and unique forms can be created combining hand-making skills with digital technology. Using rapid prototyping techniques and in-house design facilities, both contemporary and traditional designs can be produced quickly and accurately for proofing, sampling and low volume production requirements. Extensive sub-contract links ensure that volume production orders of custom-designed 3-D forms are managed to specification, budget and time targets.

## ■ We Provide:

A consistently high quality product with designs of your choice, on individual tiles or as murals across multiple tiles.

## ■ Our Qualifications

In addition to the examples and previous work as shown in this catalogue, we are also a member of the Tile Association, providing assurance of high levels of service and product quality. Our staff and partners have extensive experience in the ceramics industry and in industrial project management, and are professionally qualified.





## ■ Decorative Ceramic Surfaces Made To Order

Unique designs, fitted in a space the customer specifies, and on a tile of their choosing, until now has only been available at very high cost. Clients can now have individual tiles and multiple tile murals decorated using the image & tile of their choice and made-to measure.

You specify or commission designs and images

You specify tiles from leading brands

You specify the area to be tiled

## ■ How Is It Done?

The most common style of decoration for glazed ceramic tiles is the decal or transfer. Designs are printed and then attached to the tile surface before being re-fired to produce a permanent image. Traditionally transfers are screen-printed and production runs are relatively large to make costs acceptable.

## ■ Digital Ceramic Printing

Recent developments in computer technology and ceramic colour production now allow images to be printed easily and quickly at near-photographic quality. Low volume orders, murals and even one-off individual replacement tiles are all possible at affordable prices.

## Why Choose Our Products And Services?

■ **AFFORDABLE** - Digital printing avoids the high set-up, proofing and print run costs associated with traditional printing technology. This allows one-off custom tiles and murals to be produced economically.

■ **NEAR-PHOTOGRAPHIC IMAGE QUALITY** - Our decal production uses industry standard photo-editing and illustration software coupled with colour laser printing technology.

■ **THE QUALITY OF AUTHENTIC CERAMIC DECORATION** - This process is not to be confused with dye-sublimation. The finished product is food safe, dishwasher-proof and suitable for wet environments, including swimming pools.

■ **THE SPECIFICATION PROCESS** - Our decoration process does not alter the physical or structural characteristics of the substrate tile and therefore you can continue to specify the tile of your choice.



## ■ INFORMATION & SUPPORT

### ■ UK & Europe:

Mike Hornsby  
Manor Architectural Ceramics Ltd  
16 Charles Street  
Warwick  
CV34 4PL  
England

phone: +44 (0)1926 400946  
fax: +44 (0)1926 400272  
email: [mike@manorceramic.co.uk](mailto:mike@manorceramic.co.uk)

### ■ North America:

Lexie Tynan  
CELADON  
4350 Mainway Drive  
Burlington, ON  
CANADA L7L 5R7

phone: (905) 335-6444  
fax: (905) 335-7966  
toll free: (800) 667-7296 (Canada & USA only)  
email: [info@celadonart.com](mailto:info@celadonart.com)

Gia Finamore  
HOLOMA INC.  
1331 Lincoln Road  
No. 1304  
Miami Beach, FL 33139 USA

phone: 305.604.0327  
fax: 305.604.9158  
email: [gia@holoma.com](mailto:gia@holoma.com)



## ■ ORDERING GUIDELINES

It is recommended that tiles selected for decoration conform to BS6431 or equivalent. If tiles are to be used in specific environments (e.g. swimming pools), additional conformance data may be required.

However, success of the decoration process is determined by the quality of the glazed surface presented by the tile. Almost all proprietary glazed tiles are suitable for decoration. The colour of the glaze is not generally significant when considering adherence of the decoration, but it will affect colour rendition. White or close to white tiles are therefore recommended.

The decoration is suitable for immersion in water, including chlorinated water and is considered dishwasher and freezer safe when used on vitreous tableware. Metal release rates meet European and USA Californian standards for food safety.

Full technical specifications can be supplied on request.

- **Selection of Tile Size & Style** - A number of popular and easily available plain tiles are displayed on the following pages. If you choose to specify another tile however, we would simply complete a test firing to check compatibility.
- **Selection of Design** - A selection of popular art and designs are displayed on the following pages. They have been chosen as inspiration and the actual number of images available to us stretches into the 10's of 1000's. You can suggest styles, artists or particular artworks and we can conduct a search and offer suitable images, or you can choose to provide your own design (including photographs, text and or graphics). Otherwise one of our network of artists can design to a brief.
- **Design Scaling** - You can specify the positioning and size of your design/artwork spread over the selected tiles. A full costing and quote can be supplied at this point.
- **Sampling & Proofing** - Once the cost and design specifications are agreed, we will finalise print layout and supply a sample tile that represents the image quality and representative colours from your design. Approval of this sample is required before printing of the final product.
- **A note on Manufacturing** - We recognise that legal requirements, customer fashion interests and costs vary from country to country. As well as trying our best to meet the requirements of our customers and provide value for money, we also have a concern for the environment. Consequently, we attempt to source the actual tiles as close to our customers as we can, and through strategic alliances with ceramic decorating companies in North America we can contract out the actual process of decorating and firing the tiles. All our printing however is based in the UK, where we can control and maintain the high quality our customers demand of us.
- **A note on Colour** - The colour gamut for digital ceramic printing is smaller than that available for conventional colour printing. It is therefore sometimes necessary to create approximations to colours specified, but this is managed by the computer software to achieve the closest match possible.



## ■ Pricing Guidelines

Typically, trade customers should budget for a minimum of £200.00/square metre (approximately US\$354/square yard). We suggest recommended retail prices (rrp) for individual tiled murals start from £350.00/ square metre of decorated tile (US\$558.00/square yard). 3-D architectural forms and encaustic tiles are considered on an individual project basis. These prices exclude local taxes.

Quotations and estimates are based on the following 5 factors:

### ■ Size of mural or number of decorated tiles

This is charged per square metre of decorated tiles.

### ■ Studio Time & Pre-print

This is project-dependent and can range from a simple sampling fee for colour and quality control, to include site visits, project management, artist and specialist digital imaging fees. This cost component is not normally applied when producing repeat orders of standard designs for the tile retail and distribution industry.

### ■ Licensed or Royalty-Free Artwork

There may be a charge for the use of certain design or works of art, which we pass onto the copyright owners. This is typically calculated as a percentage of the value of the tile or mural.

### ■ Delivery Location

All our ceramic products are packaged and shipped with great care, as a single damaged tile can cause significant disruption to a project timescale. Consequently, delivery costs will vary based on destination.

### ■ Sampling Costs

Customers requiring samples of own-design tiles outside of a project quotation will be charged £25.00 or the local currency equivalent for each sample, plus local taxes and delivery.

## ■ Point Of Sale Information For Re-sellers

Necessary quantities of POS materials are provided free of charge and tile displays can be supplied subject to negotiation. Standard designs that are regularly ordered will receive significant discount on the above noted prices.



■ High technology printing coupled with skilled craftsmanship



Manufacture of a shower room decoration - application and alignment of the transfer/decals to the tiles before drying & firing



Transfer application for a William De Morgan reproduction tile - for the Victoria and Albert Museum, London



## RECENT PROJECTS, DESIGN SERVICES AND IMAGE LIBRARY

The images on the following pages are intended to provide an insight to the options made available by digital ceramic printing and our restoration and reproduction facilities. The artists featured have distinctive complementary styles of work and have portfolios much larger than can be displayed here. They are also available to work on a commission basis.

Similarly, we can only feature a fraction of the art available from the museums and image libraries that we have licensing arrangements with.

If you have a particular artistic requirement please do not hesitate to call us for further information and guidance.

## SUBMITTING YOUR OWN ARTWORK

If you choose to supply your own artwork, the following guidelines may be useful:

### Quality

The quality of the finished tile or mural will be reflected by the quality of the original artwork

### Formats

#### **Original Art/Photography**

We can accept various formats of work, including original drawings, paintings, photographs and even 3 dimensional objects, although there may be costs involved in digitising the image.

#### **Digital Information**

We can accept just about all forms of digital information, either PC or MAC and industry standard and popular file formats. They can be submitted by;

**email** (we will supply alternative email addresses for large data files)

**CD and DVD**

#### **Digital Quality**

Ideally computer-based artwork files should be saved at a resolution equivalent of 300dpi at full-size. However, we do have software that can work around this to some extent, and we are always prepared to advise.

File formats that we accept include Adobe and Corel and cross-platform files such as TIFF and JPG. Please note however, that image quality can be lost when using JPG formats.





## ■ COMMON STYLES & SIZES OF SUITABLE PLAIN CERAMIC TILES



Almost all glazed and many surface textured tiles are capable of being decorated. White glazes provide the best colour reproduction, although technically we can decorate tiles with coloured glazes. As our decoration process does not alter the material or physical characteristics of the base tile, you can specify your preferred product and have it decorated with the design of choice in the sure knowledge that the specification will not change.



## Terms & Conditions of Trade

### Pricing

1. Unless specified, all prices are quoted exclusive of delivery charges and VAT at the current rate.
2. It is company policy to request part or full payment with order from customers. Account application forms are available upon request.
3. Manor Architectural Ceramics Ltd will avoid wherever possible, but reserves the right to amend quoted prices before delivery in the event of increases in the costs of raw materials and other expenses (including duties and taxes) that affect the quoted prices.
4. For all goods made to order, such orders are deemed firm sales. Cancellations or modifications to the order can only be considered if received in writing within 5 working days of acceptance of the purchase order and/or at the discretion of a company director. The buyer will be held responsible for payment for all orders placed which do not meet these cancellation/modification criteria.
5. Payment terms are 30 days from date of invoice for account holders (see point 2. above) or if alternative terms are agreed in writing between the buyer and seller. Invoices are generated on the date of order shipment.

### Samples

6. Pre-production samples are charged at £15.00 plus VAT and delivery each. This charge may be deducted from the final invoice if satisfactory specifications have been supplied by the customer prior to production of the samples. E.g. for colour matching, pantone colour references or accurate colour print.

### Methods of Payment

<b>By Cheque (in UK sterling) payable to:</b>	Manor Architectural Ceramics Ltd
<b>By BACS or internet transfer</b>	<b>(details available on request), Mastercard, Visa or Switch</b>
<b>By Credit Account</b>	Subject to acceptance of application form (available upon request)
<b>Foreign currency</b>	Payments can be made by prior arrangement.

### Settlement Terms

7. Any goods supplied will remain the property of Manor Architectural Ceramics Ltd until payment is received in full.
8. If Manor Architectural Ceramics Ltd has not received payment in full by the agreed payment date, Manor Architectural Ceramics Ltd may;
  - i) Suspend delivery of any or all contracts whilst the buyer remains in arrears and/or cancel any or all outstanding orders and contracts and invoice for any costs accruing from such orders.
  - ii) Charge interest at 5% above Manor Architectural Ceramics Ltds' registered bank base rate for all outstanding indebtedness, with interest accruing on a daily basis.
  - iii) Charge all costs incurred by Manor Architectural Ceramics Ltd that are attributable to the late payment.

### Delivery

9. Orders incur carriage charges at cost, current at the time of despatch, unless otherwise agreed in writing.
10. Buyers requiring part-order deliveries at different times and/or multiple destinations will incur carriage charges as point 10. above with each part-order delivery and/or destination being treated as a separate order.
11. Although Manor Architectural Ceramics Ltd will endeavour to despatch the ordered goods within the time quoted, Manor Architectural Ceramics Ltd can accept no liability for failure to do so and such failure shall not entitle the buyer to cancel the order. Manor Architectural Ceramics Ltd shall in no way be liable for any consequences to the buyer for late delivery.

### Claims

12. Any claims for damage, missing or incorrect items or other perceptions of non-compliance with the written order, must be received by Manor Architectural Ceramics Ltd within 7 working days of delivery of the consignment.

### Exclusive Supply of Goods

13. Manor Architectural Ceramics Ltd retains the right to supply goods on a non-exclusive basis unless prior written agreement has been made between Manor Architectural Ceramics Ltd and buyer(s) which specifies the terms and conditions of such exclusive supply arrangements. However, Note 17 also applies.

### Copyright

14. **Products originated by Manor Architectural Ceramics Ltd.** Complete ownership of title and copyright of all products and designs remains with Manor Architectural Ceramics Ltd unless such rights are transferred to the buyer under a separate written agreement.

15. **Artwork & designs supplied by the customer to Manor Architectural Ceramics Ltd.** Manor Architectural Ceramics Ltd accepts artwork and designs/images and all materials suitable for copyright ONLY on the basis that the provider of the material owns or has authorisation to determine use of such copyrighted materials. Manor Architectural Ceramics Ltd will accept no responsibility for breach of copyright including consequential losses. Copyrightable materials are accepted in good faith that the provider has authorisation to determine their use. Manor Architectural Ceramics Ltd will not conduct investigations and/or incur costs in ascertaining ownership.

16. **Products manufactured using copyrighted materials.** Manor Architectural Ceramics Ltd respects the ownership of copyrighted materials. Products manufactured using such materials are subject to supply arrangements as agreed by Manor Architectural Ceramics Ltd and the provider of the copyright (See also Note 14.). All manufacturing rights remain exclusively with Manor Architectural Ceramics Ltd.

17. **Licensing.** If product subject to Note 17. is supplied by Manor Architectural Ceramics Ltd on a non-exclusive basis, a royalty payment of a % of net sales value will be payable to the provider of the copyrighted materials for items not supplied to them. Actual terms of payment, including the % value will be subject to written agreement. In the absence of such an agreement, the payment will default to 2% of net sales value exclusive of taxes and duties, payable on receipt of payment for the goods supplied.

18. The buyer will not resell or use any products supplied by Manor Architectural Ceramics Ltd in any form or packaging other than that in which it was supplied without prior written consent of Manor Architectural Ceramics Ltd.

19. Manor Architectural Ceramics Ltd retains the right to use their own images of products manufactured for customers, for promotional purposes unless prior written agreement has been made between Manor Architectural Ceramics Ltd and customer(s) stating otherwise.

■ EXAMPLES OF MURAL APPLICATIONS



Shower Anthurium



London Foyer/Pool



### COMPLETED PROJECT: HOTEL, ISLE OF MAN

Brief - Reproduce a 5 panel encaustic design. based on the encaustic tiles of Chertsey Abbey. The tiles were hand-made using terracotta body and a cream slip infill.



### COMPLETED PROJECT: Blackrock, Cork, Republic of Ireland

Brief - The new owner of the original Murphy Brewery family home had built a 40 square metre entrance hall onto an existing victorian hallway. The requirement was to cover the new floor with encaustic and geometric tiles that matched the existing hallway pattern. The original tiles were not to be removed so accurate matching was critical.



## RECENT PROJECT: PRIVATE HOME, IPSWICH

Brief - Design, manufacture and supply an encaustic/geometric victorian floor. The new floor replaced wood flooring and was comprised of encaustic tiles manufactured in our workshop, and coloured plain floor tiles, sourced in the UK but cut to size on-site.



## RECENT PROJECT: St AUGUSTINE'S PRIORY, ASHFORD, KENT

Brief - manufacture and supply black and red large format floor tiles to match existing Victorian tiles for a 45 square metre conservatory extension to an existing building.



## RECENT PROJECT: SHOW HOME, DALLAS TEXAS

Client - Je Reve Decor

Brief - Using art selected by a European Art Archive, produce tiled murals for swimming pool, bathroom and kitchen



Peters 18 Eme Siece Musee Cognac Jay



Fantin Latour, Henri ( 1836-1904 ) Ec. Fr.  
Paris . Musee Du Louvre



Le Champs De Coquelicots Monet Claude attribue a (1840 - 1926)  
Rouen, Musee Des Beaux Arts



## PROJECT IN PROGRESS: New Residential Apartments, Manchester UK

Client - R-Gen Architects: John McCall Architects

Brief - Using supplied 1 by 1.5m canvas, convert into 3 ceramic tiled murals for exterior application, each approximately 4 metres by 1.5m . Textured tiles were chosen by the client.



Rear wall mural during tiling



Artwork for the 3 murals



## RECENT PROJECT: TAPAS BAR, LEADENHALL MARKET, LONDON

Brief - PRODUCE TILES FOR STAIR RISERS, (AS ENTRANCE TO BAR), USING ARTWORK SUPPLIED

**ORTEGA**  
27 LEADNEHALL MARKET  
LONDON

FRONT ELEVATION

STAIR RISER BRANDING?





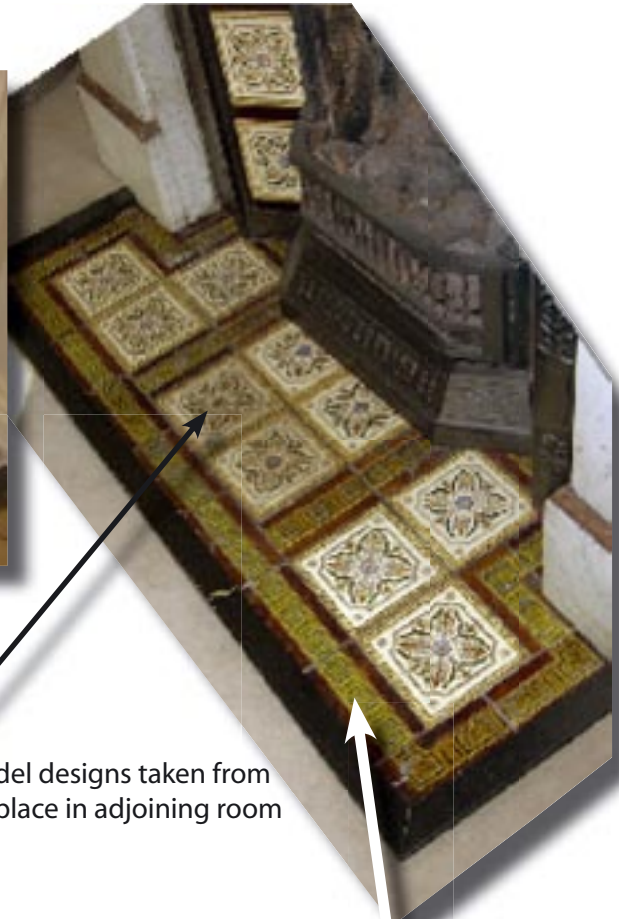
## RECENT PROJECT: PRIVATE HOME LEAMINGTON SPA

Brief - Restore fireplace hearth, reproducing designs of existing Victorian tiles

Process: High resolution photography of existing tiles, computer reconstruction of the designs, digital printing of 150mm tiles and 3D manufacturing of relief tiles



Fireplace to be restored



Model designs taken from fireplace in adjoining room



Colour and design matched digital print applied to 154mm white glazed tile



Relief design digitally reconstructed, 3D mould cut directly from computer and new tiles slip cast. Glazes matched to original.



## RECENT PROJECT: Interior Design Client WOKING, Surrey

Brief - Supply tiles for bathroom floor to size and colour as specified by client

Process: Suitable tiles, already cut to shape in vitreous white, were sourced from UK manufacturer and glazed to specification.



## RECENT PROJECT: PRIVATE HOME WARWICK

Brief - Restore fireplace design, reproducing designs of existing Victorian tiles

Process: High resolution photography of existing tiles, computer reconstruction of the designs, digital printing of 150mm tiles onto re-glazed white tiles.



Original Fireplace



After Restoration



# RECENT PROJECT: THE ALAN HIGGS CENTRE COVENTRY



Client - The Alan Higgs Trust Architects - RHWL

Brief - Using art created by local schools, design and supply tiles and murals for 15 communal shower rooms.  
The project also involved public artists and Warwick Arts Centre ( part of the University of Warwick)



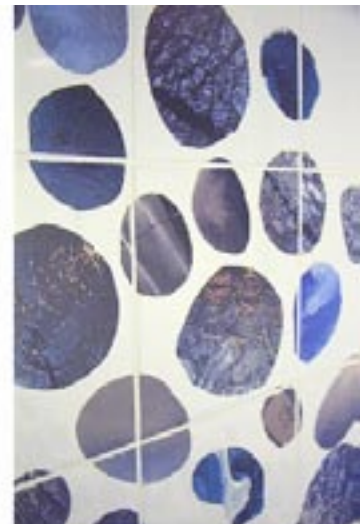


INDIVIDUAL  
*Ceramic*  
DESIGNS

## RECENT PROJECT: THE ALAN HIGGS CENTRE



RECENT PROJECT: THE ALAN HIGGS CENTRE

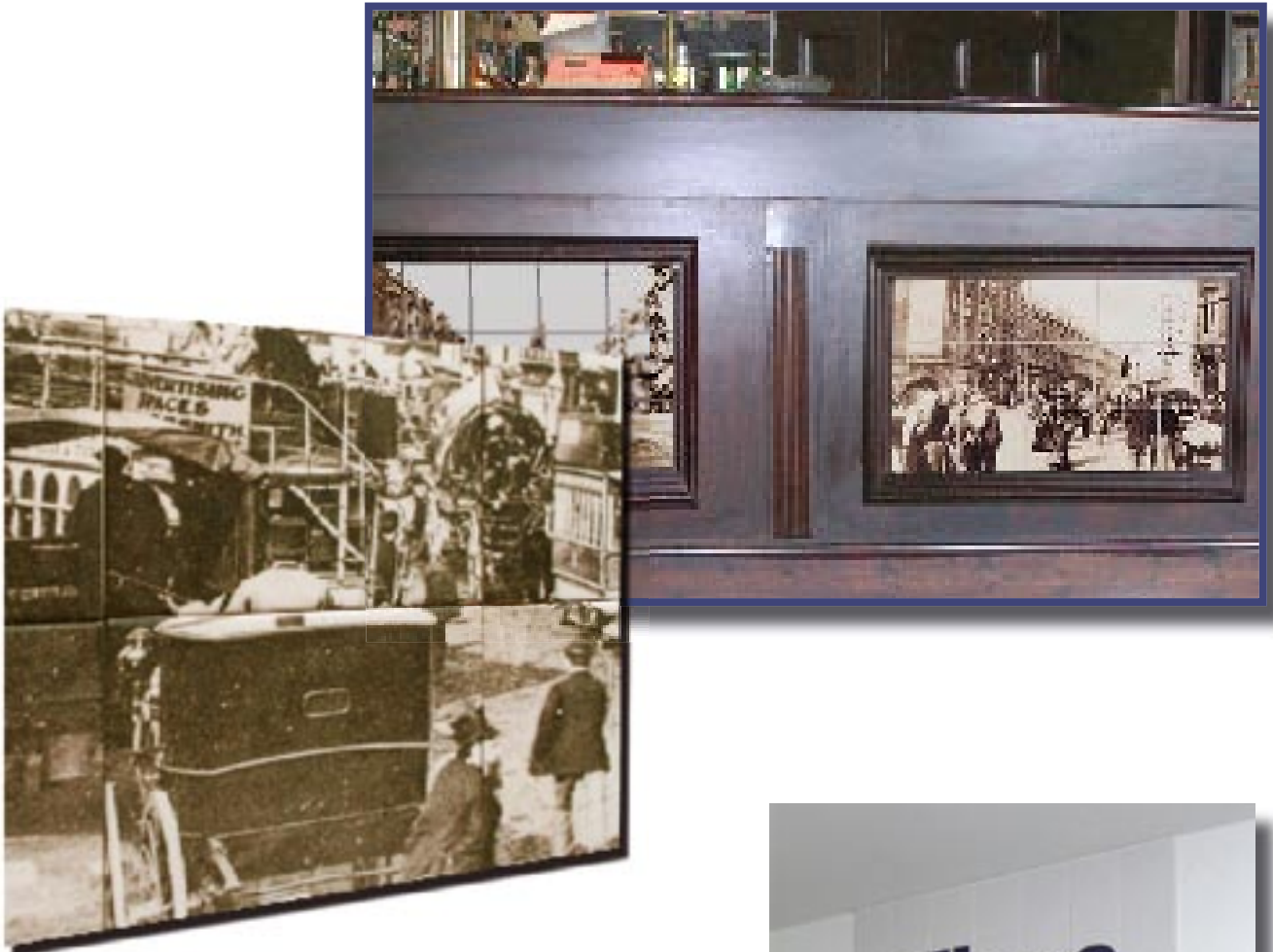


## RECENT PROJECT: THE CARPENTER'S ARMS, LONDON

**Brief** - Print , decorate & supply 10 tiled murals featuring 19th century/early 20th century East London Scenes for location on bar frontage in public house

**Process:** Images scanned from photographs supplied by local Library, layout, colour correction print and decorate H&R johnson 150mm square tiles

Please note that the photograph below shows the bar during construction.



## RECENT PROJECT: THE ALAN HIGGS CENTRE BAR, COVENTRY

**Brief:** Print, decorate and supply mural for behind bar, using supplied artwork



## A Selection of portfolio work by Anna Lorimer

Inspiration for Anna's work is typically European travel. Often working from a photograph or sketch, she identifies composition-forming shapes and spaces. Working on a canvas with collected materials, paper, fabric, anything with an interesting texture or colour, the composition is constructed and completed with various types of paint and colour. Many of her designs translate well to ceramic surfaces, and are often associated with fashionable leisure environments, such as nightclubs and restaurants. She works on commission and many of her designs are available for translation to ceramic surfaces.



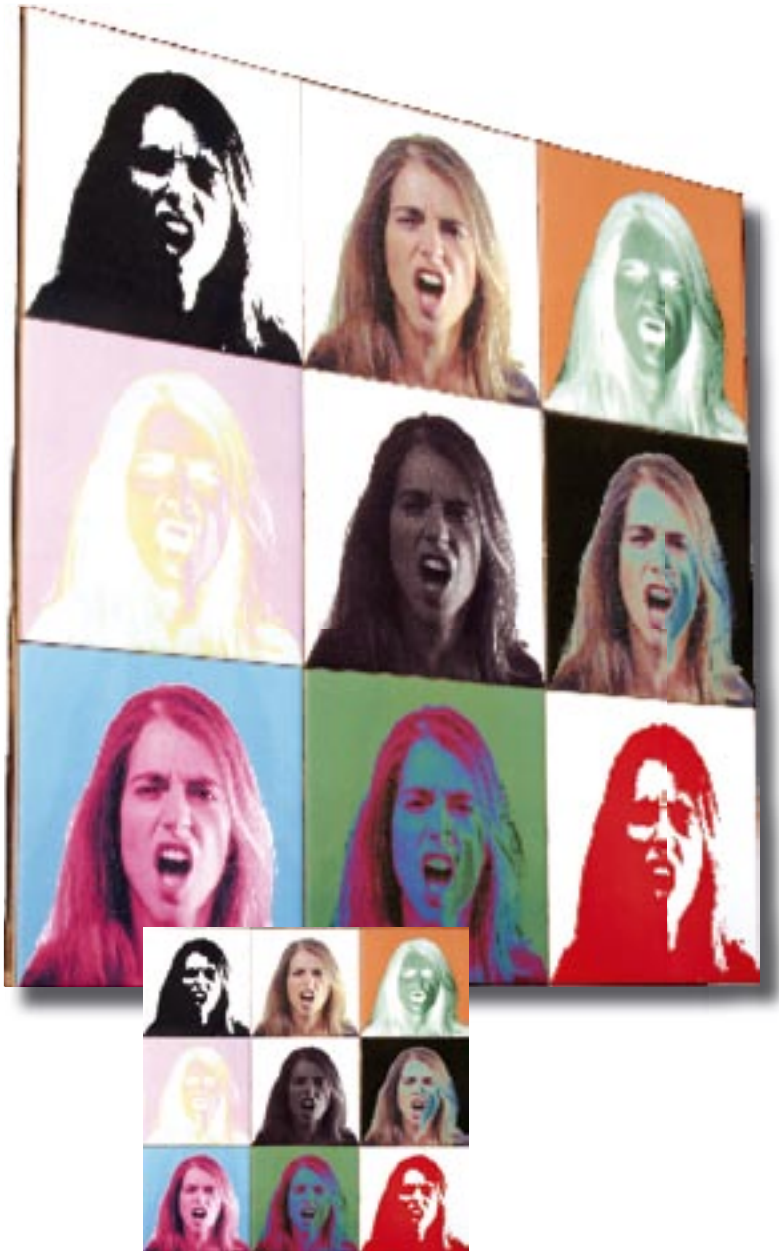
Roses on Your Table 2002



Orchestra 2002



Soho 48 2003



Shout 2005



click on the button  
to visit the website 

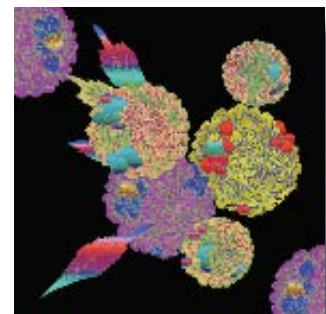


## A Selection of portfolio work by Christina Brodie

Christina Brodie, the artist behind The Temple Of Flora is passionate about detail. For her, more really is more – whether it be lavish decoration, or the realistic representation of natural colours and textures; Definately a fervent admirer of technical excellence and good craftsmanship in art. Her areas of expertise include; Botanical and natural history illustrations, horticultural & garden design. Ideal for ceramic translation onto ceramic surfaces for both traditional and restoration-based work, her work has also seen application in more contemporary environments, with stunning use of illustration and colour.



examples of previously commissioned  
of work



click on the button  
to visit the website



## Selections from The Bauman Studio by Lydia Bauman



Lydia looks for motifs where land predominates over sky (hence hillsides, aerial views, banks of trees etc) and is marked by pronounced geometry (patterns of ploughed or planted fields, regular repetition of motifs such as trees) or by a single central motif (solitary house or tree etc) which offsets its almost abstract surroundings.

The nature of Lydia's subject matter makes her work popular for both decorative individual tiles and as large format murals. She invariably leaves an irregular white margin around the image, which is also always reflected in the tile and mural replications of her work



sunflower house (detail)



sunflower house



click on the button  
to visit the website

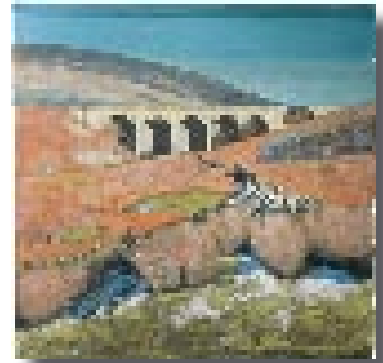




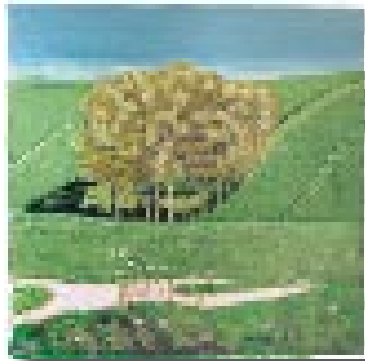
Sunny Yorkshire Landscape



Lavender Field



Yorkshire Landscape with Viaduct



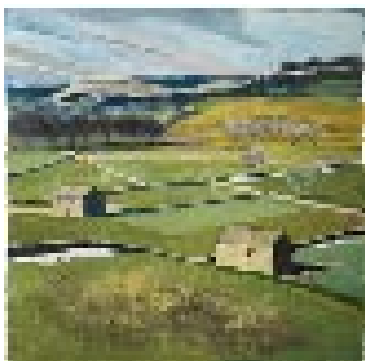
Lincolnshire Wolds with Stand of Trees



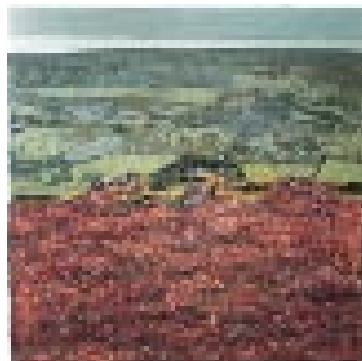
poppy fields



Sutherland Landscape with River



Lincolnshire Landscape



Landscape with Heather



Landscape with Low Lying Sun

click on the button  
to visit the website



# Selections from The Permanent Collection of The Courtauld Institute of Art

## About the Courtauld Institute of Art

The Courtauld Institute of Art is one of the world's leading institutes for teaching and research in the history of art and conservation. Uniquely it houses world famous collections of paintings, prints and drawings in its Gallery, and has an impressive collection of impressionist work. The Courtauld Institute Gallery's collections are searchable via their **Art and Architecture** website. The majority of these images are available for use for ceramic decoration.



Antibes, Monet Claude 1888



Azulejo, Church of Madre de Deus  
Lisbon, Portugal

## Select from the following themes:

- architecture and building (26150)
- business, commerce, industry (9357)
- communication and information (7897)
- costume, jewellery and personal appearance (3146)
- domestic and social life, rites and customs (11967)
- economics, education and social issues (6506)
- farming and gardening (1409)
- fine and applied arts, sculpture (28642)
- geography, planning and surveying (2470)
- government, law, politics (3245)
- health and medicine (1441)
- history, literature and philosophy (4608)
- materials (7106)
- music, theatre and dance (1833)
- nature (5012)
- objects (2051)
- people and organisations (11639)
- periods and styles (10586)
- processes (5986)
- religion and the supernatural (18855)
- science and technology (11769)
- services and utilities (1466)
- sport and leisure (1878)
- transport and travel (2532)
- war (4292)



Central section through the elevation of  
the nave of San Salvatore in Lauro, Rome  
17th century & 18th century Ghezzi, Pier  
Leone

click on the button  
to visit the website



## Selections from The Illustrated London News Picture Library



The Illustrated London News archive represents over 160 years of history, society and events through the 19th & 20th Centuries, drawing from 9 different publications- The Illustrated London news, The Graphic, The Sphere, The Sketch, The Tatler, The Bystander, Britannia & Eve, Sporting & Dramatic News and The Illustrated War News. Among their contributors were many illustrative artists, including Heath Robinson, Mabel Lucie Atwell and HM Bateman. The majority of the images in the archive are available for ceramic decoration.



London Panarama, supplement to the London Illustrated News, February 9th 1861

Choose from :

*London - Riviera - Winter Sports - Pin-Up Girls - Sports including polo, racing, golf, - tennis, rugby and cricket - Art Deco - Famous Illustrators - Historical engravings - War - Events - Humour - Landscapes and scenery - Dogs - Romance - City panoramas - Magazine covers - Motoring - Fashion & Beauty - Seasonal including Christmas - Personalities - Travel & Exploration - Industry & Commerce - Royalty - Ships - Leisure - Advertising*



The Plage of 1931, Lewis Baumer, The Sketch, July 1931



David Wright



Front cover of 'The Bystander' April 25th 1928

click on the button to visit the website

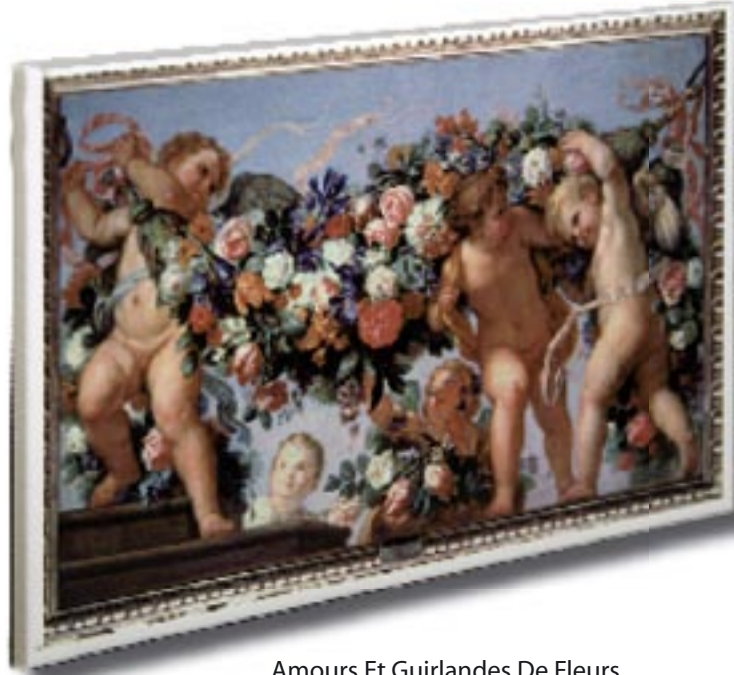


# Selections from the European Art Archive

This archive, based in Paris, provides access to over 15000 high quality images of traditional and contemporary art. A small selection is shown below and a full listing can be provided on request.



Couverture Noel 1928 De House Beautiful  
Petrucci Antonio 20 Eme Siecle



Amours Et Guirlandes De Fleurs  
Maratta Carlos (1625-1713) Paris, Musee  
du Louvre



Quatre Etudes De Nu  
Michel Ange Buonarroti (1475 - 1564)



Portrait De Julie Manet Rouard  
Fille De L Artiste Morisot Berthe ( 1841-1895 )

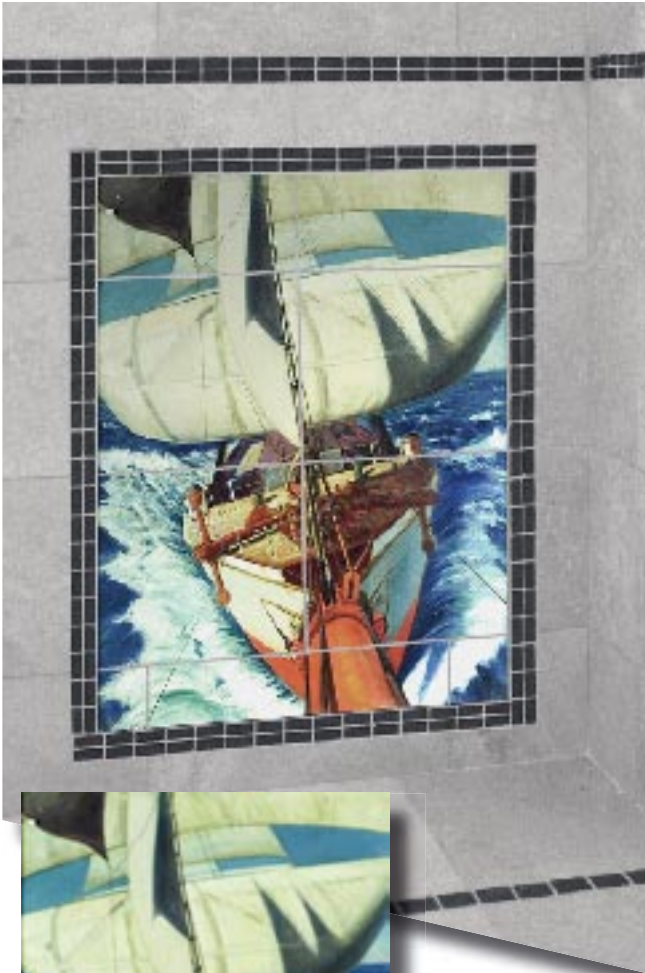


Hercule Et Omphale  
Le Moyne Francois (1688 - 1737)



## A selection of images from the collections of the National Maritime Museum,

The National Maritime Museum, London has collections containing over two million objects related to seafaring, navigation, astronomy and time. The Museum is committed to improving access to its collections, with over 10,000 objects available to view online via its website, [www.nmm.ac.uk](http://www.nmm.ac.uk). A wide selection of these images are available for ceramic decorating purposes.



© National Maritime Museum, London

The barque 'Birkdale', view aft from the bowsprit HBJ Everett (1922)



© National Maritime Museum, London

British Empire shipping 1937. Distribution of shipping of 3,000 tons gross and above on 24 November 1937.



© National Maritime Museum, London

A Hay Barge off Greenwich  
George Chambers Jnr circa 1850.



© National Maritime Museum, London

Chart of the Coast of Guinea  
Anonymous circa 1550

click on the button  
to visit the website



# Fractal Designs

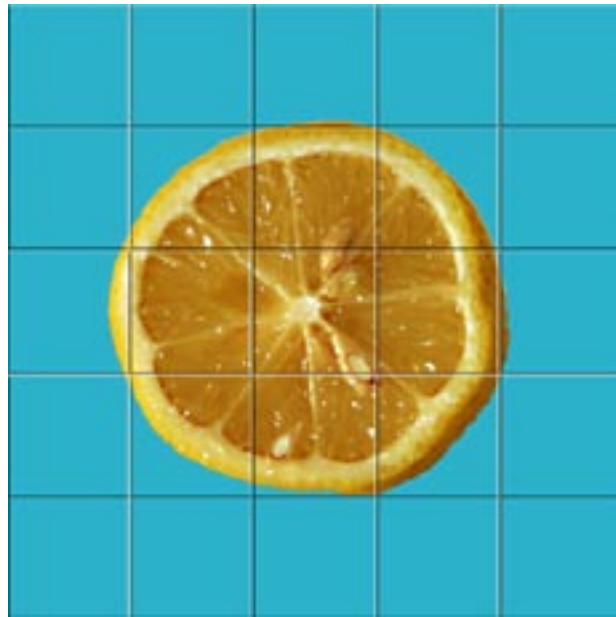


Almost endless series of patterns created out of chaos. Available in various patterns, shades and colour hues as stand-alone murals or to combine into contemporary design themes.



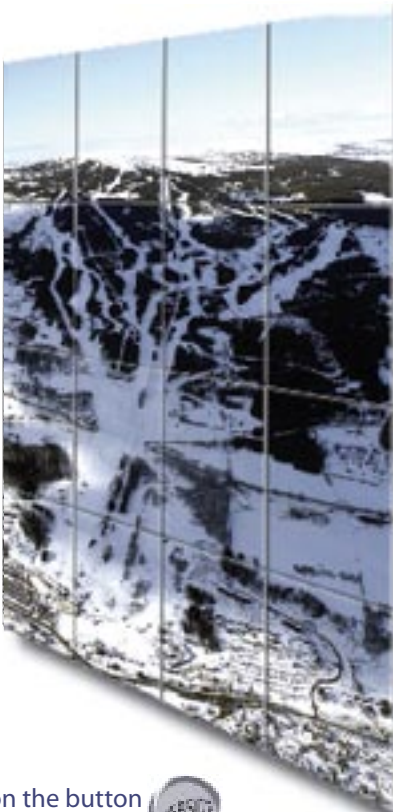


High resolution photography representing life and living, from fruit to factories, represented on ceramic surfaces



# Ski Sport Selections including the Photography of John Norris

## Ski Action Photography and Dramatic Landscape Images



Hafjell Ski Resort, Norway

click on the button  
to visit the website



## Selections from the Permanent Collection of the Royal Academy of Arts

The Royal Academy of Arts is an independent fine arts institution which supports contemporary artists and promotes interest in the arts through a comprehensive and ambitious exhibition programme. Today their exhibitions and galleries attract more than a million people each year, putting the Royal Academy among the top ten attractions for paying visitors in London. Access to a wide selection of art from their permanent collection is available for ceramic decoration.



'A Mermaid' 1900  
John William Waterhouse RA 1849-1917



'Startled' 1892 Sir Francis Dicksee. PRA  
1853-1928

click on the button  
to visit the website



# Selections from The Permanent Collection of The Victoria & Albert Museum

The V&A in South Kensington is the world's greatest museum of art and design, with collections unrivalled in their scope and diversity. 3000 years' worth of amazing artefacts from many of the world's richest cultures including ceramics, furniture, fashion, glass, jewellery, metalwork, photographs, sculpture, textiles and paintings. We regularly supply the museum with reproduction tiles using their collection of designs bequeathed by the estate of William de Morgan. We can request access to specific images for ceramic mural applications.



Sunglasses, photo by John French. London, England, 1960's



© Victoria and Albert Museum, London



Wallpaper - Bistro, by Palladio © Victoria and Albert Museum, London



Collonade Wallpaper by Palladio © Victoria and Albert Museum, London



William De Morgan Tile Mural © Victoria and Albert Museum, London



click on the button to visit the website

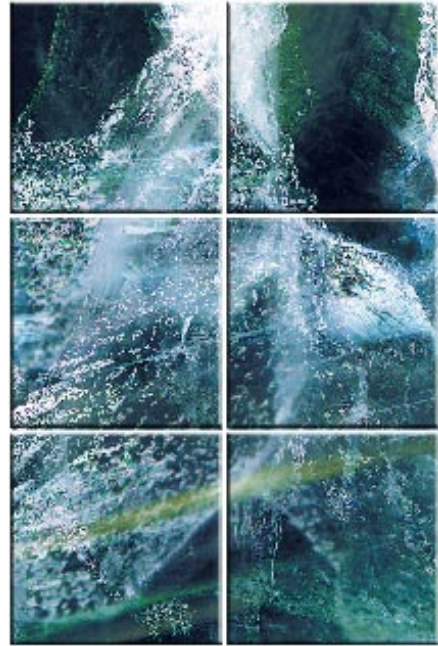


## Selections from the Work of Richard Weston

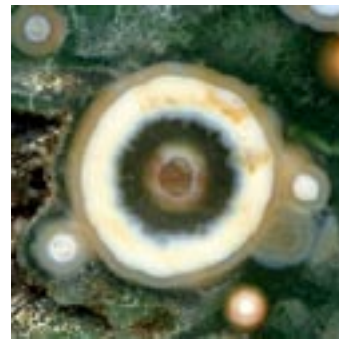
Professor Richard Weston is renowned for his work as an architect and creative designer, using digital printing techniques on a range of media, specializing in high magnification images of mineral structures.



© Agate Richard Weston 2005



© Waterfall Richard Weston 2005



© Planet Richard Weston 2005



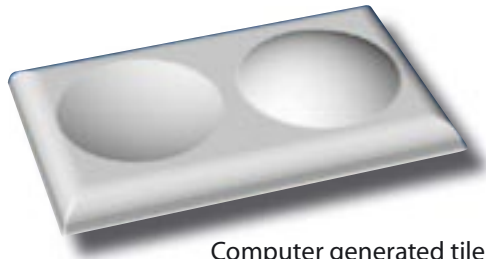
## Decoration of 3-dimensional ceramic surfaces

Stunning and unique results can be obtained by styling 3-dimensional surfaces: from giftware and dinner services, to wash basins.

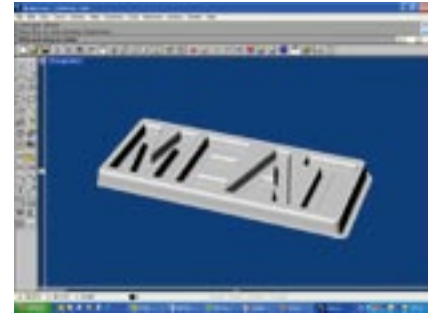


## Design & Production of 3-dimensional ceramic products for Contemporary & Restoration Projects

Using rapid prototyping techniques and in-house design facilities, both contemporary and traditional designs can be produced quickly and accurately for proofing, sampling and low volume production requirements. Extensive sub-contract links ensure that volume production orders of custom-designed 3-D forms are managed to specification, budget and time targets.



Computer generated tile images prior to (CAD/CAM) mouldmaking



Above and below, reproduction tiles from the V&A. Photographic details of the original walls are shown on the left.



Our encaustic tiles are manufactured to order, often with a brief to match existing patterns and colours.

click on the button to to return manorceramic.com

