

# Pumping Stations

## History

Part of North Midland Construction plc, a Group which has been operating since 1947.

Nomenca was formed in 1998 to service the water, power and building services sectors, and has seen profitable year on year growth in all sectors.

We employ a significant number of professional engineers who are experienced in a variety of specialised fields and support our in-house design capability.

Our systems support AUTOCAD 2007 and the MS suite of software packages.

Our client base extends from working directly with blue chip clients and local government to providing a MEICA service to building contractors and developers.

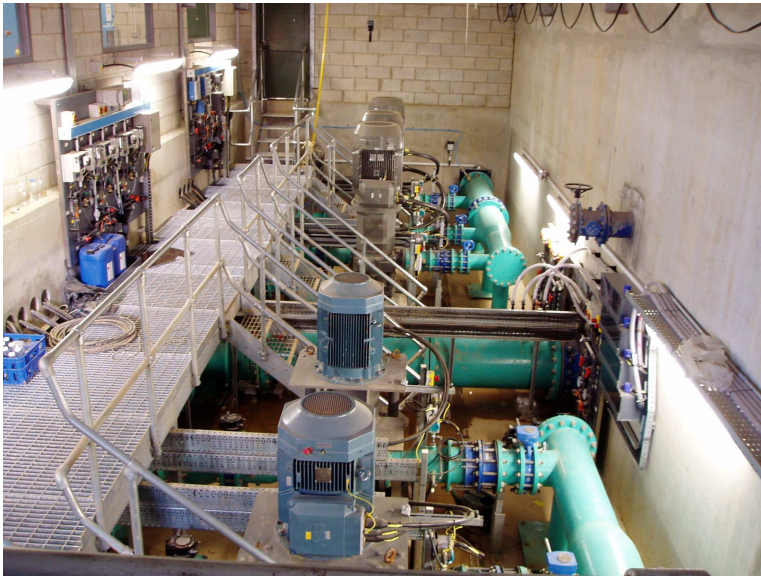
## Full M&E Capability

Nomenca's multi-disciplined engineering and management staff, have considerable experience throughout a wide array of engineering professions and environments. This in-house expertise enables the company to evaluate schemes and present sound cost effective design solutions, which are constructed on time, to budget and in a professional manner.



# Nomenca

## Nomenca Project Services Department



The Project Services Department consists of a team of highly motivated and multi-skilled personnel, all dedicated to getting the job done on time and to the highest quality.

The workforce consists of individual installation teams, each comprising a mechanical/electrical capability with considerable experience in the water and associated industries. Each team operates from a fully equipped van with access to lifting equipment, safety gear, gas monitors etc as required.

Our experienced design and project engineers have been involved in all aspects of pumping schemes, with many of our engineers being ex Flygt, KSB and Weir Pumps personnel.

We are fully conversant with many water company specifications, including United Utilities, Severn Trent Water, Yorkshire Water, Southern Water, Wessex Water, South West Water and Anglian Water, and all to the latest Sewers for Adoption Specifications.

## Sewers for Adoption Pumping Stations

Many new housing developments and industrial complexes require new sewage pumping stations which have to be built to the Sewers for Adoption specification. At Nomenca we have the necessary experience and expertise to offer a highly competitive service covering all aspects of the work, from the detailed design to the installation, testing and commissioning of the plant, including any necessary civil work.

If we are involved at the early stages on a scheme, and have an input on the design work, we can offer a written guarantee that the pumping station will be adopted by the local water company, upon completion. Even if the design work is undertaken by others, we are still able to offer a pumping station which will meet the requirements of the Sewers for Adoption specification.

We have good working relationships with various control panel manufacturers, which enables us to offer control panels to meet the specification, also if required the panel can be enclosed within a GRP kiosk supplied complete with building services.

Many pumping station ancillaries, such as lifting davits, access covers, and flushing valves can be incorporated into the design. Fully detailed design drawings can be provided to the clients specification. Electronic and hard copy Operation and maintenance manuals can also be provided to meet the requirements of the project specification.





# Strate AWALIFT Sewage Pumping Station

The particular feature of all AWALIFT Sewage pumping stations is the STRATE-system, the highly reliable combination of centrifugal pump and solids collecting chamber.

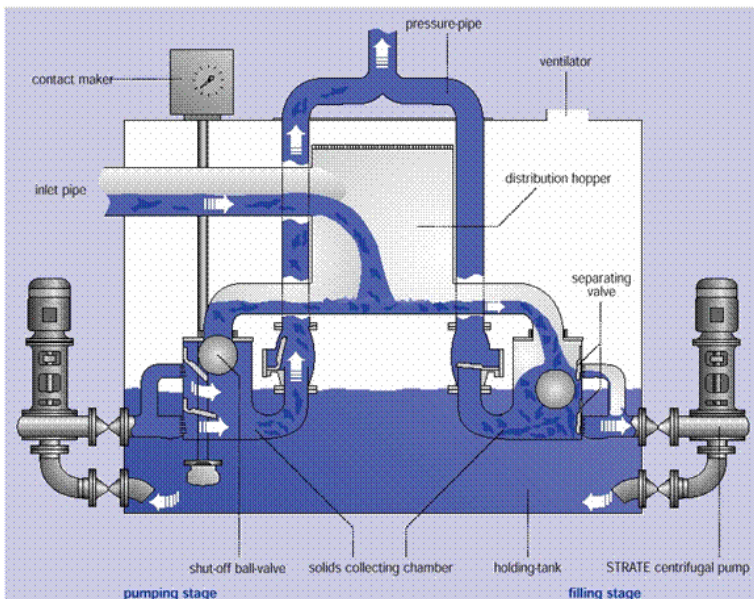
## How The System Works.

The sewage flows through the inlet into a distribution hopper and flows from there into the solids collecting chambers. The solids are retained in these chambers by the separating valves. The solids-free effluent is allowed to pass through the valves, and through the pumps into the holding-tank.

On a timer or level controlled basis, the duty pump is called to run, and pumps the solids-free effluent back through the solids collecting chamber into the rising main. The solids collecting chamber is 'flushed' clear of all residues.

During the pumping stage, the incoming sewage continues to flow into the distribution hopper, and is diverted to the other solids collecting chamber (Standby Pump), where the solids are separated from the effluent. The duty pump solids collecting chamber is isolated from the incoming flow by the shut-off ball-valve.

The size of the holding-tank and the number of pumps/solids collecting chambers are determined by the incoming flow and the total pumped head of the system.



## NICEIC Approved Contractor

Nomenca are NICEIC approved for electrical installation work including cabling. This means all electrical work undertaken by our site installation engineers is of the highest quality and is tested to the requirements of the National Inspection Council for Electrical Installation Contractors. Full certification is given for each installation. We also have COMP Ex approved electricians for installation and test in potentially explosive atmospheres.



## ITT Flygt Contracting Partner

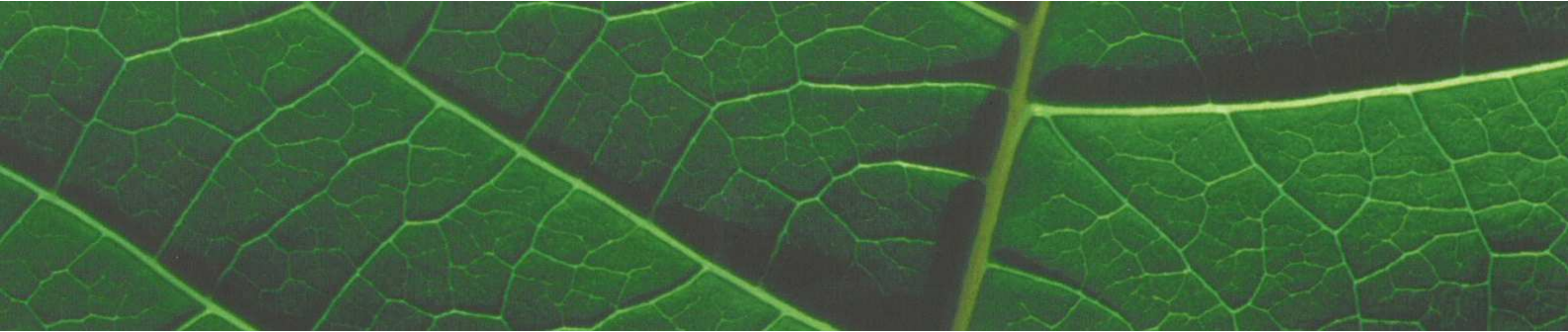
Nomenca Ltd have been appointed as the Flygt Contracting Partner (FCP) for the whole of the Midlands Area and are responsible for Flygt pumps mechanical and electrical contracting work within this area.

As such we would be pleased to receive your enquiries for Flygt submersible pumps and mixer applications as either supply only or turnkey project solutions.

As an FCP we can offer highly competitive prices on an excellent overall service for the design, supply, installation and commissioning including any necessary civil's works for Sewage Pumping Systems. The same service and discount structure is also available for any application outside our FCP area.



Visit our web site @ [www.nomenca.co.uk](http://www.nomenca.co.uk)



## Typical Services

Mechanical Installation, NICEIC Electrical Cabling & Installation, HVAC, Lighting, Boiler Maintenance and Installation, Plumbing Services, Fire and Security Alarm Installations, Sanitary and Bathroom Installations, Central Heating Installations, General Finishing Services, CCTV, Water Filtration, Chemical Dosing Systems, Pumping Stations, PLC, SCADA and Telemetry Systems and Reliability Centred Maintenance.

## Accreditation

Nomenca pride themselves on having a fully integrated management system which is accredited to BS EN ISO9001:2000 for Quality, BS EN ISO14001:2004 for Environmental and OHSAS18001:1999 for Health and Safety.



## Head Office: -

Nunn Close  
The County Estate  
Huthwaite  
Sutton-in-Ashfield  
Nottinghamshire  
NG17 2HW

Phone: 01623 447700  
Fax: 01623 447707  
Email: sales@nomenca.co.uk



## Regional Offices:-

North West	South West	Southern	Yorkshire	Anglian	Midlands
Terence House	Unit F	Unit 11	Eccup WTW	Unit 1	Unit 19 Greenlands Business Centre
24 Kingsland Grange	41 Valley Road	30 Bonville Road	Eccup Moor Road	Woolpit Business Park	Studley Road
Woolston	Plympton	Brislington	Eccup	Bury St Edmunds	Redditch
Warrington	Plymouth	Bristol	Leeds	Suffolk	Worcestershire
WA1 4RW	PL7 1RF	BS4 5QH	LS17 7RJ	IP30 9UP	B98 7HD
Tel 01925 281200	Tel 01752 330180	Tel 01179 771141	Tel 0113 266 4782	Tel 01359 244643	Tel 01527 521162
Fax 01925 281225	Fax 01752 330187	Fax 01179 771941	Fax 0113 266 4769	Fax 01359 242927	Fax : 01527 521149

Visit our web site @ [www.nomenca.co.uk](http://www.nomenca.co.uk)