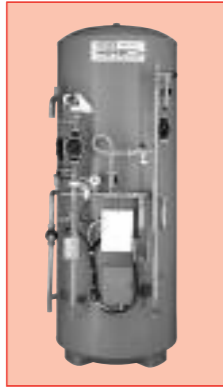


**SANTON**

**Electric Water Heating  
Unvented Water Heating**

**Trade Price List**

*Effective 1<sup>st</sup> March 2006 · All prices exclusive of VAT*



PremierPlus SystemFit

Cost effective mains pressure water heating

- High-grade stainless steel cylinder
- High efficiency coil-in-coil heat exchanger
- Capacities from 100-300 litres, Direct and Indirect models
- 10 year cylinder guarantee
- BEAB and WRAS approved
- SystemFit option; Pre-plumbed and pre-wired to reduce installation time
- **NEW** Grey plastic coated outer casing

## Unvented Hot Water Systems

	Ref.	Product Code	Ltr	Price £
<b>PremierPlus</b>				
<b>Direct</b>	PP100E	94 050 018	100	473.03
	PP120E	94 050 019	120	511.98
	PP150E	94 050 020	150	539.81
	PP170E	94 050 021	170	562.07
	PP210E	94 050 022	210	584.33
	PP250E	94 050 023	250	656.67
	PP300E	94 050 024	300	740.15
<b>Indirect</b>	PP100B	94 050 027	100	601.02
	PP120B	94 050 028	120	623.28
	PP150B	94 050 029	150	645.54
	PP170B	94 050 030	170	678.93
	PP210B	94 050 031	210	712.32
	PP250B	94 050 032	250	762.41
	PP300B	94 050 033	300	834.75
<b>Accessories</b>				
Swept tee for secondary circulation	94 970 033			13.34
Relay for 'Y' plan systems	94 970 034			21.75
Immersion heater straight	94 970 036			63.57

## **NEW** PremierPlus SystemFit

PP120B SF	94 050 040	120	1007.00
PP150B SF	94 050 041	150	1060.00
PP170B SF28	94 050 042	170	1113.00
PP210B SF28	94 050 043	210	1166.00
PP250B SF28	94 050 044	250	1219.00
PP300B SF28	94 050 045	300	1272.00

## Point of Use Vented

	Ref.	Product Code	Ltr	kW	Price £
<b>Aquarius Oversink</b> (with Thermal Fuse)	A7/3	94 010 001	7	3	90.19
	A7/1	94 010 002	7	1.2	90.19
	A10/3	94 010 003	10	3	157.27
	A10/1	94 010 004	10	1.2	157.27
<b>NEW Aquarius Oversink</b> (with re-settable cut-out)	A7/3R	94 010 021	7	3	97.36
	A7/1R	94 010 022	7	1.2	97.36
	A10/3R	94 010 023	10	3	164.44
	A10/1R	94 010 024	10	1.2	164.44
<b>Aquarius Undersink</b> (with Thermal Fuse)	AU7/3	94 010 008	7	3	92.91
	AU7/1	94 010 009	7	1.2	92.91
	AU10/3	94 010 010	10	3	161.99
	AU10/1	94 010 011	10	1.2	161.99
<b>NEW Aquarius Undersink</b> (with re-settable cut-out)	AU7/3R	94 010 025	7	3	100.08
	AU7/1R	94 010 026	7	1.2	100.08
	AU10/3R	94 010 027	10	3	169.17
	AU10/1R	94 010 028	10	1.2	169.17
<b>Vented Taps</b> (for use with Aquarius Undersink)					
Vented Basin Hot Tap	TXH01	94 970 014			70.74
Universal Cold Basin Tap	TXU01	94 970 017			44.58
Vented Mixer Tap	TXM01	94 970 016			145.37
Vented Sink Tap*	TXH02	94 970 015			118.28
Universal Cold Sink Tap*	TXU02	94 970 018			64.22
*(Pillar or Highneck)					

## Point of Use Unvented

	Ref.	Product Code	Ltr	kW	Price £
<b>Aquaheat</b>	AH7/2.2	94 050 001	7	2.2	246.73
	AH10/2.2	94 050 002	10	2.2	297.59
	AH15/2.2	94 050 003	15	2.2	335.46
<b>Aqualine</b>	AL07/3	94 050 012	7	3	374.69
	AL10/3	94 050 013	10	3	412.09
	AL15/3	94 050 014	15	3	470.84
	AL15/4.5	94 050 015	15	4.5	570.27

## Expansion Kits

	Ref.	Product Code	Price £
ALK01 includes expansion vessel, expansion relief valve pressure reducer/strainer and non-return valve.	ALK01	94 970 008	174.51
ALK02 includes expansion vessel, expansion relief valve and non-return valve.	ALK02	94 970 009	112.14
ALK03 is a TMV2 thermostatic blending valve.	ALK03	94 970 010	89.05
ALK04 includes expansion vessel, pressure reducer/strainer and non-return valve.	ALK04	94 970 011	140.23
ALK05 includes expansion vessel and non-return valve.	ALK05	94 970 012	81.11
ALK06 includes pressure and temperature relief valve.	ALK06	94 970 013	63.75
ALK07 is a TMV3 thermostatic blending valve.	ALK07	94 970 037	95.00

NOTE: ALK06 should be used in any installation where a pressure and temperature relief valve (PTRV) is required.

## Hand Hygiene

	Product Code	kW	Ref.	Price £
<b>Hand Wash</b>				
EV 2001 C/W Stainless Steel Spout	94 020 002	3.1	EV2001/3	66.96
EV 2001 C/W Stainless Steel Spout	94 020 003	7.2	EV2001/7	73.61
Sanspray push button		3	FH324	127.77
<b>Hand Driers</b>				
Aqua-dri Automatic 'Touch Free' Operation	94 020 009	1.5	Aqua-dri 1.5	88.43

## Instantaneous Multipoint

	kW	Ref.	Price £
Power Pack	7	HP724	158.32
	9	HP924	158.32

## Water Heating and Storage

	Ltr	kW	Ref.	Price £
<b>Rectangulars</b>				
Thermostatically controlled wall mounted model.	25	3	DFB25	724.11
	50	3	DFB50	896.90
	75	3	DFB75	1068.36
<b>Cistern Type</b>				
Wall mounted unit	25	3	R25	471.80
	45	3	R45	529.89
	70	3	R70	667.78
	115	3	R115	714.14

## Industrial Immersion Heaters

	kW	mm	ins	Watts per cm <sup>2</sup> in <sup>2</sup>	Ref.	Price £
<b>Oils</b>						
MO	3	1065	42	1.4	9	MO342 206.01
2 1/4" BSP	2	610	24	-	-	MO224 141.28
Steel sheath	3	915	36	-	-	MO336 183.89
complete with	5	1525	60	1.6	10	MO560 265.46
control thermostat	6	1830	72	1.6	10	MO672 292.07
	1	305	12	-	-	MO112 119.29
	3	760	30	-	-	MO330 163.33
	4	1065	42	1.9	12	MO442 214.30
	5	1220	48	-	-	MO548 229.56
	6	1525	60	1.9	12	MO660 252.51
<b>LO</b>						
2 1/2" BSP*	2	610	24	-	-	LO224 177.39
Steel sheath	3	915	36	-	-	LO336 206.01
complete with	6	1830	72	1.6	10	LO672 292.07
control thermostat	1	305	12	-	-	LO112 146.80
	3	760	30	-	-	LO330 194.23
	5	1220	48	-	-	LO548 267.95
	6	1525	60	-	-	LO660 292.84

## Industrial Immersion Heaters

	kW	mm	ins	Ref.	Price £
<b>All Industrial Immersion Heaters are supplied complete with a stem type control thermostat.</b>					
<b>Water</b>					
MY superloy sheath	2	280	11	MY211	96.99
2 1/4" BSP	3	280	11	MY311	128.70
	3	760	30	MY330	133.92
	4	280	11	MY411	131.68
	4	405	16	MY416	133.29
	6	405	16	MY616	139.86
	6	760	30	MY630	151.01
	6	1065	42	MY642	164.75
	7.5	610	24	MY724	150.16
	9	405	16	MY916	157.57
	9	685	27	MY927	167.24
	9	915	36	MY936	170.94
	12	610	24	MY1224	184.58
	12	915	36	MY1236	193.24
	18	915	36	MY1836	319.60
<b>MT titanium sheath</b>					
2 1/4" BSP	6	405	16	MT616	250.23
	7.5	610	24	MT724	289.87
	9	685	27	MT927	304.73
<b>LY superloy sheath</b>					
2 1/2" BSP*	6	380	15	LY615	183.22
	9	510	20	LY920	216.28
	12	660	26	LY1226	274.01
	15	810	32	LY1532	297.32
	18	970	38	LY1838	323.32
<b>MGY superloy sheath</b>					
2 1/4" BSP	4.5	355	14	MGY414	194.60
	6	405	16	MGY616	251.72
<b>DY superloy sheath</b>					
Bolt-on*	12	405	16	DY1216	420.95
	18	405	16	DY1816	478.68
	24	405	16	DY2416	642.24
	30	685	27	DY3027	715.60
	36	685	27	DY3627	730.05
	45	685	27	DY4527	758.90
	54	915	36	DY5436	858.73
<b>DT titanium sheath</b>					
Bolt-on*	12	405	16	DT1216	544.82
	18	585	23	DT1823	667.49
	24	760	30	DT2430	772.12
	24	915	36	DT2436	828.65

\* A second pocket is provided to fit integrally a manual reset limit thermostat.

## Industrial Heater Flanges

	Ref.	Price £
<b>DY and DT immersions</b>		
Brass flange	F8462	108.93
<b>MY, MGY, MT, MO</b>		
2 1/4" blanking plug	F105	10.17
2 1/4" Universal mechanical flange	F100U	15.23

#### Approved spares stockists

Electric Water Heating Co.  
2 Horsecroft Place, Pinnacles,  
Harlow, Essex CM19 5BT  
Tel: 0845 0553811  
E-mail: sales@ewh.co.uk

Eyre & Elliston  
Unit 12, Spitfire Way,  
Airlinks Industrial Estate,  
Heston, Middlesex,  
TW5 9NR  
Tel: 020 8573 0574

Parts Center  
Network 65 Business Park,  
Bentley Wood Way, Burnley,  
Lancashire BB11 5ST  
Tel: 01282 834403  
www.partscenter.co.uk

Newey & Eyre  
Specialists Products Division  
Please contact your local branch.

UK Spares Ltd  
Tower Lane, Warmley, Bristol  
BS30 8XT  
Tel: 0117 961 6670

William Wilson Ltd  
Unit 3A, 780 South Street,  
Whiteinch, Glasgow G14 0SY  
Tel: 0141 4341530



Santon, Hurricane Way, Norwich, Norfolk NR6 6EA.

#### CONTACTS:

**SPECIFICATION** ■ Tel: 01603 420128 Fax: 01603 420229  
E-mail: specifier@santon.co.uk

**SALES** ■ Tel: 01603 420130 Fax: 01603 420149  
E-mail: sales@santon.co.uk

**SERVICE** ■ Tel: 01603 420347 Fax: 01603 420349  
E-mail: service@santon.co.uk

**WEBSITE** ■ www.santon.co.uk

Goods are sold subject to our standard conditions of sale, copies of which are available on request.  
All prices shown are carriage paid in the U.K. mainland only. Carriage extra (plus VAT where applicable) for Channel Islands, Isle of Man,  
Northern Ireland and the outer islands of Scotland. VAT Registration No. 670 323 457  
Errors and omissions excepted.

January 2006  
94 900 004