

Concept to Construction

Bridges for golf courses

- Attractive and durable
- Constructed in hardwood timbers
- Multiple options and features
- Design to installation services



total
support
from
concept
to
construction

The pleasing and natural appearance of hardwood makes it an ideal material for bridges and boardwalks on golf courses, in the countryside and in parklands, where it blends harmoniously with its surroundings.

- Hardwood :**
- ✓ Requires minimal maintenance
 - ✓ Provides an extended life without the need for preservative treatment
 - ✓ Good vandal resistance
 - ✓ Excellent fire retardant characteristics

The bridges SHS supply and install range from simple fairway ditch crossing platforms to large single or multi-span structures to cross rivers, lakes or roads. They can be designed to accept a variety of loads in widths to accommodate typical golf cart and maintenance vehicles.



Bridge design options

- ✓ Flat or arched construction
- ✓ With or without parapets
- ✓ A range of attractive parapet styles
- ✓ Vehicle kerbs
- ✓ Slip resistant deck boards
- ✓ Deck board anti-slip options

Our bridges are designed to Eurocode standards and manufactured in accordance with the requirements of EN-ISO9001.

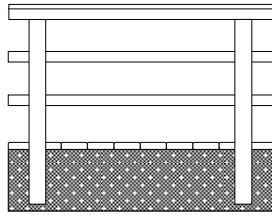
All hardwood timbers used in SHS products are obtained from legally managed sources. If required, products can be constructed with timbers sourced from independently certified forests managed in accordance with the principles and criteria established by the Forest Stewardship Council.



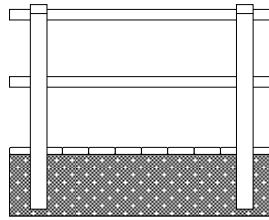
Responsible Forest Management
SA-COC-001654 AV
© 1996 Forest Stewardship Council A.C.

The parapet plays an important part in the aesthetic value of the bridge. Depending on the situation and purpose, a choice is made for either horizontal or vertical parapets. SHS offers a range of standard hardwood parapets and also welcomes the opportunity to quote for the design and supply of bespoke parapets in both hardwood and metal.

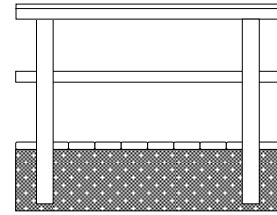
STANDARD HARDWOOD PARAPET OPTIONS



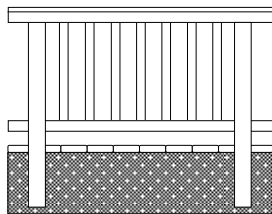
TYPE A PARAPET
Handrail + 2 intermediate rails



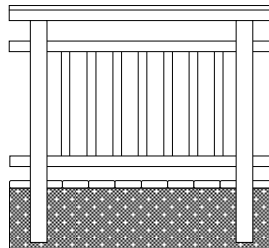
TYPE B PARAPET
2 x intermediate rails



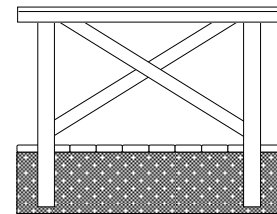
TYPE C PARAPET
Handrail + 1 intermediate rail



SHS TYPE E
Handrail + vertical infill rails



SHS TYPE EE
Elevated handrail + vertical infill rails



SHS TYPE G
Handrail + cross rails

STANDARD PARAPET INFORMATION

Typical timber section dimensions

■ Posts	95 x 95 mm
■ Hand rail	40 x 115 mm
■ intermediate rails	95 x 145 mm
■ Vertical infill rails	40 x 40 mm

Typical parapet heights

■ Pedestrian	1.15 m
■ Cycleway	1.40 m
■ Equestrian	1.80 m

DECK BOARD ANTI-SLIP OPTIONS

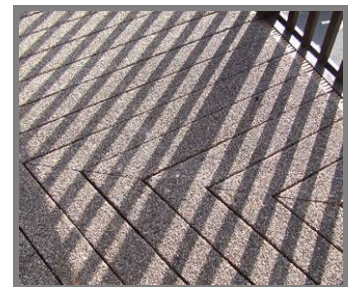


Walking surfaces are usually formed from timber deck boards, which have a grooved slip resistant finish. This resistance can be further enhanced by adding anti-slip inserts into the surface of the deck boards.

Anti-slip inserts are constructed from particles of aggregates, which are encapsulated within a resin bonded compound and injected into machined dovetail grooves. The resultant finish is an effective, hard wearing anti-slip surface that compliments the aesthetic appearance of the timber.

SHS also offers a factory applied anti-slip resin

bonded aggregate coating to cover selective or total deck board surfaces. These options are suitable for use on bridges, jetties, boardwalks and walkways.



DECK BOARD FIXING OPTIONS

40 mm thick deck boards

- 6 mm Ø x 90 mm long screws
- 8 mm Ø x 90 mm long dowels

28 mm thick deck boards

- 5 mm Ø x 60 mm long screws