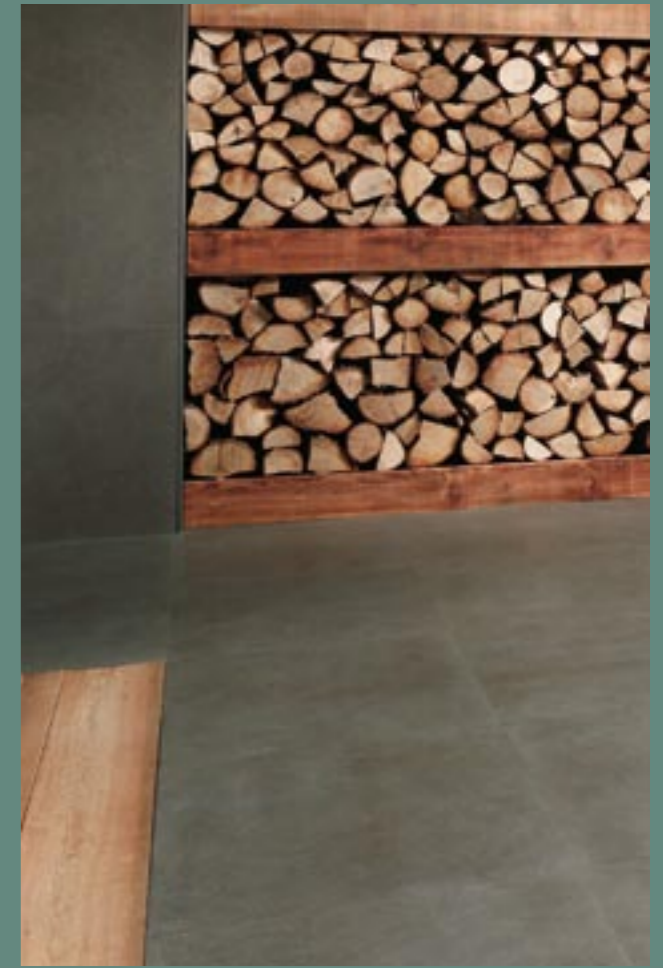




BUXY

SURFACE 

NATURAL



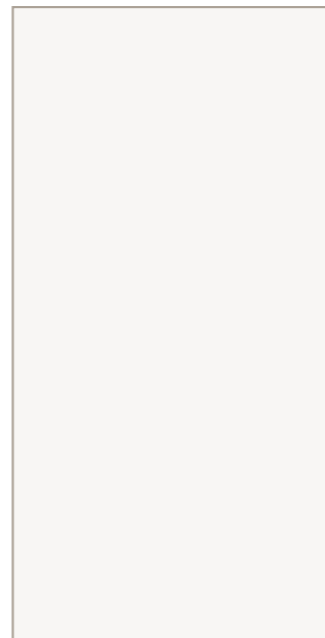
Faithfully replicating the most exclusive French limestones, Buxy features the use of penetrating salts to create delicate patterning akin to its natural counterpart. Soft, organic hues add warmth to any environment, whether classic or modern. Also available in the innovative and technical Kerlite ultrathin format.



BUXY

- Outstanding simulation of contemporary French limestone
- Technically superior to its natural counterpart
- Available in two finishes
- Samples available

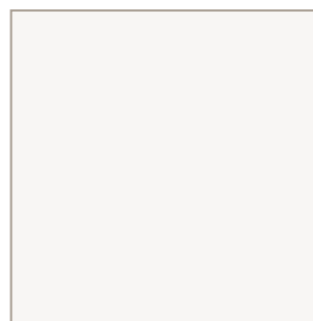
SIZES:



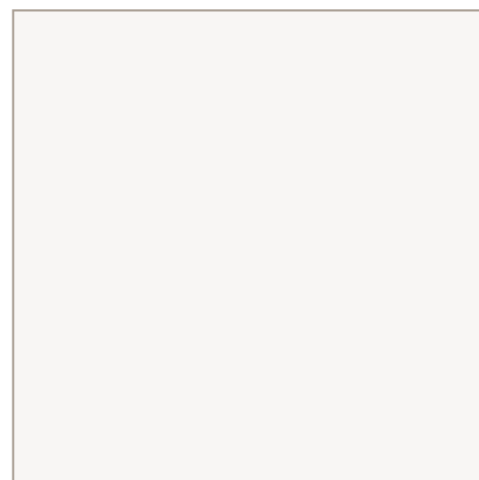
594 x 1190 x 14mm



442 x 442 x 14mm



594 x 594 x 14mm



895 x 895 x 14mm

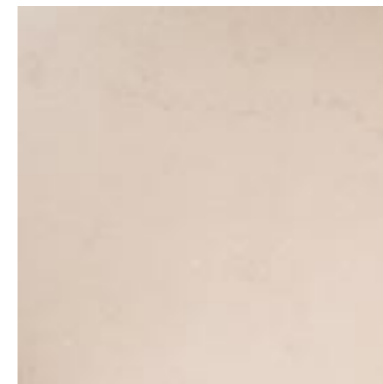
FINISHES:



NATURAL



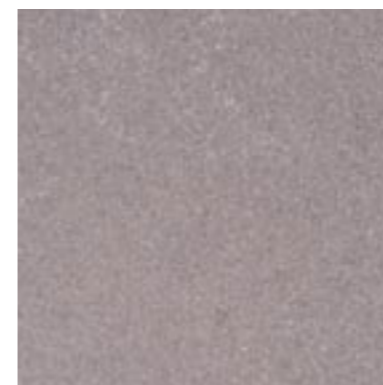
LUX



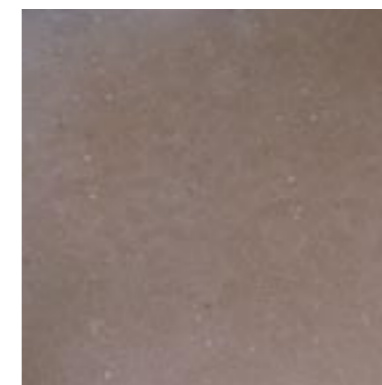
AMANDE



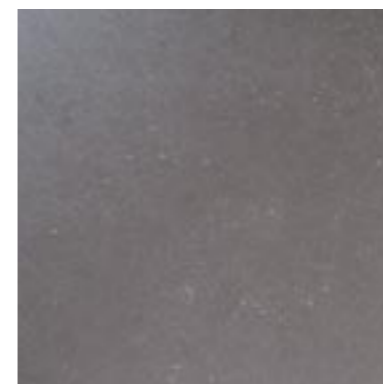
CARMEL



PERLE



NOISETTE



CENDRE

This product range is manufactured to satisfy exacting environmental criteria and certified to meet the following global standards:



SURFACE TILES BATTERSEA
60 Queenstown Road
Battersea
London
SW8 3RY
T: 020 7819 2300

WWW.SURFACETILES.COM

SURFACE TILES ISLINGTON
316 Essex Road
Islington
London
N1 3PB
T: 020 7354 7000

INFO@SURFACETILES.COM

SURFACE TILES SURREY
3 Molesey Business Centre
Central Avenue, West Molesey
Surrey
KT8 2QZ
T: 020 8481 9588

SURFACE

