

Space



COMPACT LOOSE-LAY TILES

VINYL



- > Compact loose-lay tile for offices and commercial areas
- > Stylish design in wide colour range
- > Cost-effective installation
- > New generation PUR-Reinforcement: Topclean XP
- > Extreme resistance to scratches and abrasion
- > Excellent resistance to scuffing, soiling and staining
- > Easy low cost maintenance: NO WAX, NO POLISH - FOR LIFE!





Space

Modular sophistication

Space is a compact vinyl loose-laid tile that is well suited for heavy-traffic offices and other commercial areas.

The Space range offers a combination of design effects that give a soft, sophisticated look and top flooring performance, including superior wear resistance, exceptional maintenance properties and great loose-laying benefits.

The Space design expression

The unique and highly attractive Space design expression is very suitable when the goal is to create a dynamic working environment or breath new life into your office premises.

The five different Space patterns are available in two groups of colours – the warm, soft, earthy ones and the more elegant ones in different shades of blue, grey and green.

The Space design expression has a lot to offer in creating the right atmosphere in modern offices.

Loose-laying saves time and money

Space is a loose-laid flooring and offers by that an extremely smart and flexible solution that cuts down labour and adhesive consumption in the installation phase. And that is only the beginning.

With Space you also completely avoid the most work- and time-consuming process in refurbishment projects, and that is stripping out the existing floor covering and preparing the sub floor for the new one. The whole Space flooring assembly is simply lifted out and sent for recycling, without leaving any damage to the sub floor. This also means that the area is out of use for less time.

Loose-laying is an ideal solution when access to cables and pipes underneath the flooring is required. The tiles are quick and easy to lay – no glue, no hot welding, just a little tackifier to lock the tile in place. It is also easy to replace single damaged tiles.



Tarkett Environmental Intelligence

We see our Intelligent Flooring Solutions as part of the world's ecological system – and make strong efforts to secure that all our activities are based on respect for the environment. All our flooring products are developed, produced and handled with a great concern for sustainability and environment. We call it Environmental Intelligence and live by this principle in every single step, from vision to waste.



Space contains 33% recycled material

Environmental Intelligence in our vinyl flooring

Tarkett introduced the first vinyl flooring more than 60 years ago, and environmental sustainability has always been in focus for us.

- 100% recyclable
- Low energy consumption
- Easy and lowest maintenance cost ever
- Low emissions
- Long life cycle avoiding short-term replacement and minimizing old installation waste



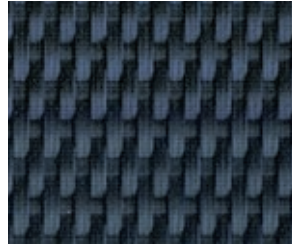
The Space range

Zen

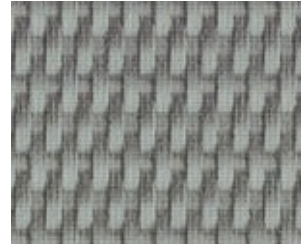


3677 014

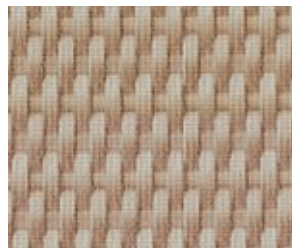
Wave



3677 015



3677 016



3677 017

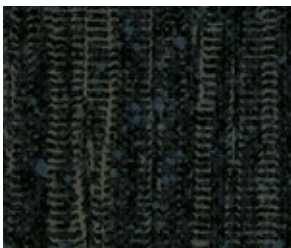


3677 018

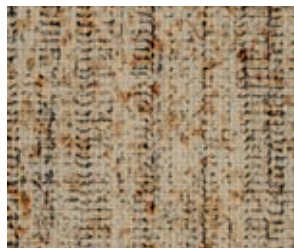




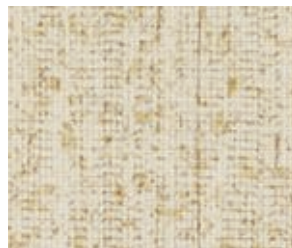
Damask



3677 001



3677 002



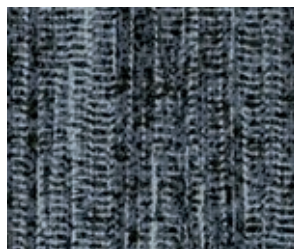
3677 003



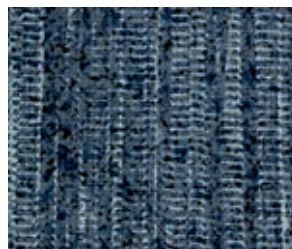
3677 004



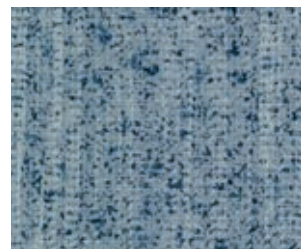
3677 005



3677 006



3677 007



3677 008

Line



3678 001



3678 002



3678 003

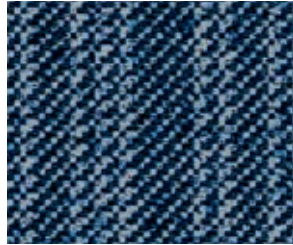


3678 004

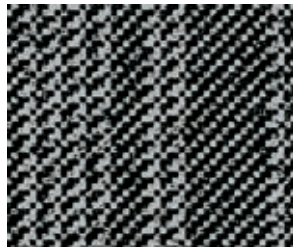


3678 005

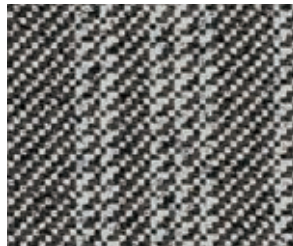
Sequence



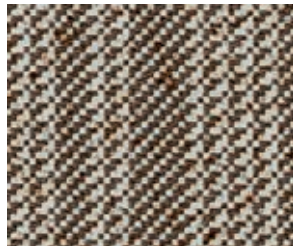
3678 006



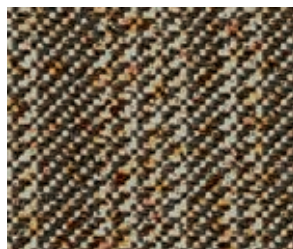
3678 007



3678 008



3678 009



3678 010



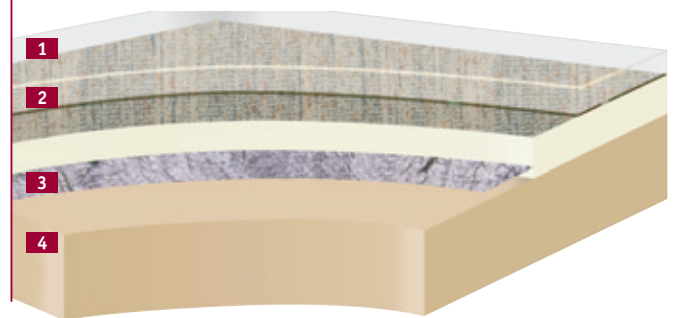


Top performance in all aspects

Space flooring is an excellent choice from both functional and economical aspects. The compact 4mm product profile is tough and durable, and the 0.7mm pure PVC wear layer give excellent resistance to static indentation, abrasion, scuffing and tearing.

Product construction

- 1** New **TOPCLEAN XP** PUR-reinforcement: very high resistance and easy maintenance.
- 2** 0.7 mm pure PVC transparent wear layer: exceptional resistance to abrasion and indentation.
- 3** Glass fibre non-woven reinforcement: excellent dimensional stability.
- 4** Solid homogeneous calendered sheet: optimum resistance to tearing.



TOPCLEAN XP benefits:

- New-generation PUR reinforcement: TOPCLEAN XP PUR.
- Extreme resistance to scratches and abrasion.
- Excellent resistance to scuffing, soiling and staining.
- Easy, low-cost maintenance: NO WAX, NO POLISH FOR LIFE!
- More than 30% saving on maintenance.
- More than 50% saving on water, detergent and energy.
- Excellent life cycle cost.

TOPCLEAN XP features:

- Alumina oxide micro particles ⇨ surface twice as strong as traditional PUR for better resistance to scratches and abrasion (see Mohs scale).
- Stain-blocking agents ⇨ excellent resistance to stains (marker, iodine and chemicals) .
- Hydrophobic agents ⇨ stops dirt adhering and allows faster drying ⇨ easier cleaning.

TOPCLEAN XP: a new generation of surface treatment.

Tarkett features a new generation of higher-resistance surface reinforcement, TOPCLEAN XP, which makes Space much easier to clean without ever needing polish or wax.

TOPCLEAN XP is a photo-reticulated polyurethane coating, reinforced with alumina oxide. It prevents scratching and abrasion, reduces soiling, removes the need for stripping and polishing and reinforces the floorcovering's resistance to staining by markers, iodine, rubber and shoe soles.

Surface toughness second only to diamonds

Thanks to the permanent molecular cross-linking of the polyurethane formulation, the TOPCLEAN XP-treated surface is extremely resistant. On the Mohs scale of hardness, only diamonds are tougher.



The Mohs scale of hardness characterises the scratch resistance of various materials through the ability of harder material to scratch a softer material



Space

DESCRIPTION

Loose lay printed compact floorcovering. Glass fibre reinforcement. New TOPCLEAN XP Polyurethane reinforcement on surface and built-in Sanitized(R) treatment. In tile form. Product standard: EN 649.

Technical data	Standards	Stella
Classification	EN 685 commercial industrial	Classes: 34 43
Total thickness	EN 428	4.00 mm
Wear layer thickness	EN 429	0.70 mm
Total weight	EN 430	6 400 g/m ²
PUR Reinforcement		Yes
Abrasion group	EN 660-1	Group T: ≤ 0.08 mm
Static indentation	EN 433	< 0.10 mm
Furniture leg	EN 424	No damage with foot 0.1 load 100 kg
Castor chair	EN 425	No damage
Dimensional stability	EN 434	Length + width < 0.10%
Curl resultant to heat	EN 434	< 2 mm
Reaction to fire	EN 13501-1	B _{fl} s1 loose-laid over any A2 _{fl} or A1 _{fl} substrate (concrete) and over any derivative wood substrate with a density higher than 470 kg/m ³
Slip resistance	DIN 51130 EN 13893	R9 ≥ 0.3
Electrical properties	EN 1815 EN 1081	< 2 kV on concrete R _t > 10 ¹⁰ ohms
Impact sound reduction	EN ISO 140-8 EN 717/2	ΔL _w = 6 dB
Acoustical absorption	EN ISO 354 EN ISO 11 654	α _w = 0.05
Reduction of in room impact noise	NF S 31-074	L _{n,e,w} = 74 dB
Light fastness	EN ISO 105-B02	≥ 6/8
Chemical resistance	EN 423	High resistance
Resistance to bacteria	NF EN ISO 846	Sanitized® Grade 1 High fungi effect
Thermal resistance Underfloor heating	EN 12524	0.05 m ² K/W Suitable
Colours		Zen: 1 - Damask: 8 Wave: 4 - Line: 5 Sequence: 5
Form of delivery	EN 426	Tiles: 50 x 50 cm

Art. codes	NCS numbers
Zen	
3677 014	S5010-Y30R
Damask	
3677 001	S8000-N
3677 002	S2010-Y30R
3677 003	S1005-Y10R
3677 004	S1500-N
3677 005	S2000-N
3677 006	S6010-R70B
3677 007	S5020-R80B
3677 008	S2020-R80B
Wave	
3677 015	S5020-R80B
3677 016	S1502-R50B
3677 017	S1005-Y50R
3677 018	S3030-Y20R
Line	
3678 001	S3560-Y90R
3678 002	S8505-R80B
3678 003	S1002-Y50R
3678 004	S1005-Y20R
3678 005	S4020-R90B
Sequence	
3678 006	S6010-R70B
3678 007	S7502-R
3678 008	S5502-Y
3678 009	S4005-Y20R
3678 010	S6010-Y10R

The above information is subject to modification for the benefit of further improvement (10/07). For more detailed technical information, please contact Tarkett. Follow Tarkett's installation and maintenance instructions carefully. These instructions are available upon request.



TARKETT SALES COMPANIES

www.tarkett-commercial.com

> **Australia:** Tarkett Australia Pty Ltd – Tel. +61 2 96 34 73 73 > **Austria:** Tarkett Holding GmbH, Niederlassung Wien – Tel. +43 1 47 88 062 > **Baltic States:** Tarkett SAS – Tel. +370 37 262 220 > **Belgium:** S.A. Tarkett NV – Tel. +32 2 520 04 67 > **China:** Tarkett Asia Pacific Limited Shanghai Representative Office – Tel. +86 (21) 62 88 15 38 > **Czech Republic:** Tarkett SAS, org. slozka – Tel. +420-271 001 602 > **Denmark:** Tarkett A/S – Tel. +45 43 90 60 11 > **Finland:** Tarkett Oy – Tel. +358 9 5406 5870 > **France:** Tarkett SAS – Tel. +33 1 41 20 42 49 > **Germany:** Tarkett Holding GmbH, Bereich Objekt – Tel. +49 6233 810 > **Greece:** Tarkett Monoprosopi Ltd – Tel. +30 2 10 576 3889 > **Hong Kong:** Tarkett Asia Pacific Ltd. – Tel. +852 2511 8716 > **Hungary:** Tarkett SAS – Tel. +36 1 437-8150 > **Italy:** Tarkett S.p.A. – Tel. +39 02 893 411 > **Luxembourg:** Tel. +352 949 211 8804 > **Middle East:** Tarkett Middle East – Tel. +961 1 75 2363/4 > **Netherlands:** Tarkett Benelux B.V. – Tel. +31 76 57 80 760 > **Norway:** Tarkett AS – Tel. +47 32 20 92 00 > **Poland:** Tarkett Sp. z o.o. – Tel. +48 22 598 08 81 > **Portugal:** Tarkett SA – Tel. +351 21 427 64 20 > **Russian Federation:** Tarkett Russia – Tel. +7 4 95 777 69 83 > **Slovakia:** Tarkett SAS – Tel. +421 37 6515 404 > **Singapore:** Tarkett Far East – Tel. +65 67 43 53 84 > **South East Europe:** Tarkett Trade d.o.o. – Tel. +381 21 7557 649 • (44) 569 12 21 > **United Kingdom:** Tarkett-Marley Floors Limited – Tel. +44 (0) 1622 854 040 > **Slovakia:** Tarkett SAS – +421 37 6515 404 > **Spain:** Tarkett Floors S.L – Tel. +34 91 358 00 35 > **Sweden:** Tarkett Sverige AB – Tel. +46 771 25 19 00 > **Switzerland:** Tarkett Holding GmbH, Bereich Objekt Schweiz – Tel. +41 043 233 79 24 > **Ukraine:** Tarkett UA – Tel. +380380 (44) 569 12 21 > **North America:** Johnsonite – Tel. +1 440 543 8916 > **Tarkett Inc. USA:** Tel. +1 713 869 5811 > **Tarkett International:** Tel. +49 6233 811 755 – Tel. +33 41 20 41 01