



Onyx Marble Original - MPC83



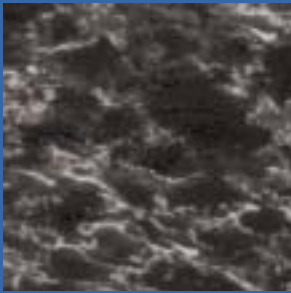
Onyx Marble Marine - MPC84



Beige Travertine - MPC71



Light Beige Travertine - MPC73

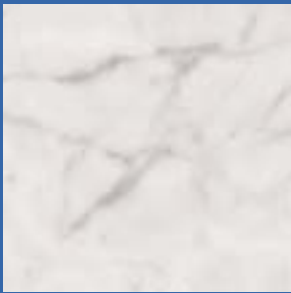


Italian Marble Black - MPC82



Italian Marble Pearl - MPC81

SPOILT FOR CHOICE



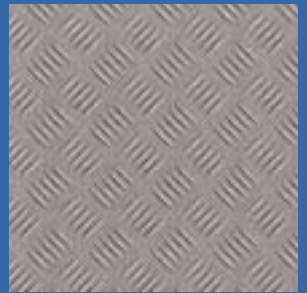
White Carrara - MPC22



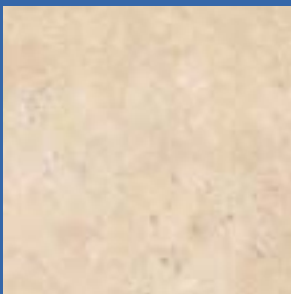
Beige Carrara - MPC21



Argent - MPC62



Treadplate - MPC99



Travertine Sandstone - MPC93



Russett Sandstone - MPC44



Perlino Limestone Grey - MPC86



Perlino Limestone Natural - MPC85



Ivory Sandstone - MPC43



Mist Sandstone - MPC41



Crazed Limestone Dark Grey - MPC96



Crazed Limestone Light Grey - MPC95

These are representative samples. For technical reasons material may vary in shade and appearance.



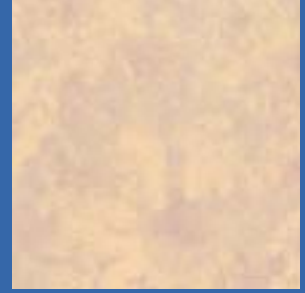
Medium Pebbles - MPC106



Large Pebbles - MPC101



Cordoba Slate Rust - MPC56



Cordoba Slate Beige - MPC54



Grass - MPC100



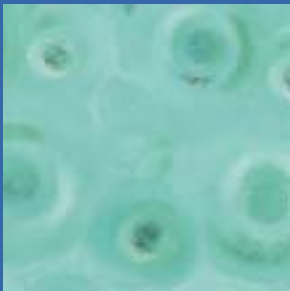
Shingle - MPC102



Emerald Atlanta - MPC106



Moroccan Slate - MPC92



Water on Glass - MPC108



Swimming - MPC103



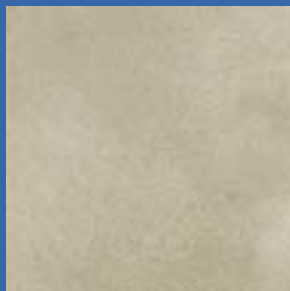
Quartz Granite Grey - MPC88



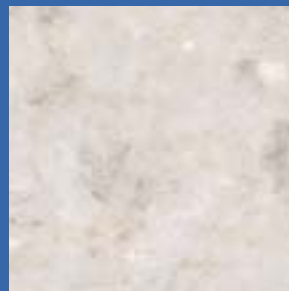
Quartz Granite Beige - MPC87



Concrete - MPC104*



Natural Concrete - MPC105*



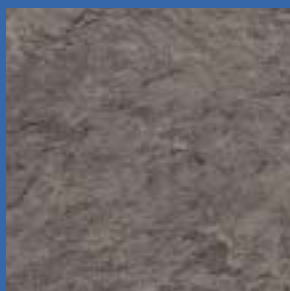
Orinpos Stone - MPC97



Natural Limestone - MPC94



Clay Concrete - MPC46



Charcoal Slate - MPC91



Blue Terrazzo - MPC89



Beige Terrazzo - MPC90

*Also available as 450 x 450mm as standard
Please note - pattern does not match tile to tile



BEAUTY

THAT'S MORE THAN
JUST SURFACE DEEP FROM

MARLEY
FLOORS



MARLEY FLOORS IS EXCLUSIVELY DEDICATED TO THE COMMERCIAL FLOORING MARKET. ITS UNRIVALLED EXPERTISE HAS CREATED THE MARLEY PREMIER COLLECTION, A RANGE OF STYLISH VINYL FLOORCOVERINGS THAT ARE AS TOUGH AS THEY ARE BEAUTIFUL. AND WITH THE HUGE RANGE OF DESIGNS AVAILABLE, YOU CAN BE SURE THAT THERE WILL ALWAYS BE A PREMIER MARBLE AND STONE FLOOR TO ANSWER YOUR NEEDS PRECISELY.



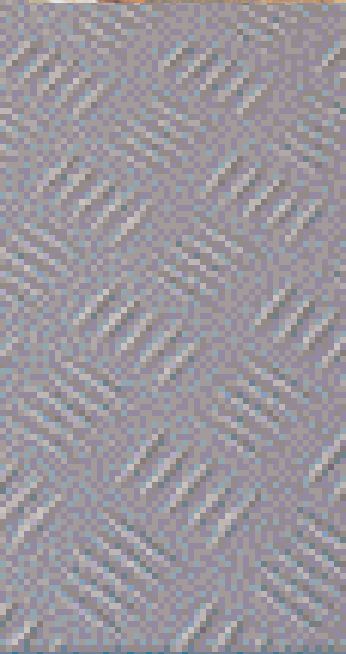
Marley Floors has over 50 years experience in the commercial flooring market, so it's no surprise that the Premier Marble and Stone Collection is full of the qualities that have long made the Marley Floors name synonymous with innovation and excellence.

Manufactured in the UK to European and International standards, the Premier Collection is covered by a 10 year guarantee and has been specifically tailored to the requirements of the commercial sector. The wide range of marble, stone, metallic and photographic effects available means that there's a Marley Premier floor for every occasion.

What's more, each design features a clear vinyl wear layer, tough enough to ensure that a Marley Premier Floor can withstand sustained heavy traffic without losing its stunning good looks.

Benefits:

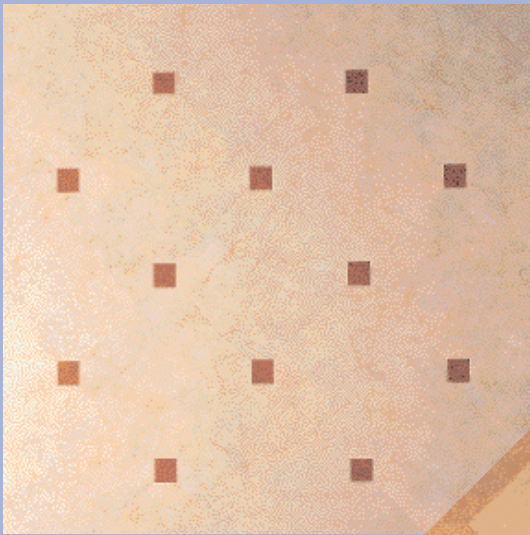
- *Highly decorative natural effect and photographic designs*
- *Durable and long-lasting*
- *Easy-to-maintain clear vinyl wear layer*
- *Create individual designs with borders, accent strips and features*
- *Suitable for areas of heavy wear - retail, leisure, health, education and prestigious domestic applications*



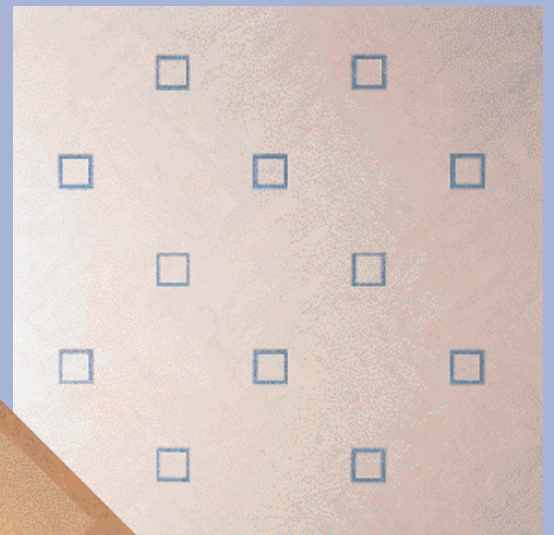
LAYOUTS

A marble and stone floor may be laid in a number of different ways, recreating traditional laying patterns and injecting visual interest through colour and contrast. Patterns available include Keystone, Framed Key, Trellis, Chequerboard and Lattice. Whatever your choice, you can be sure that the effect will be simply quite stunning.

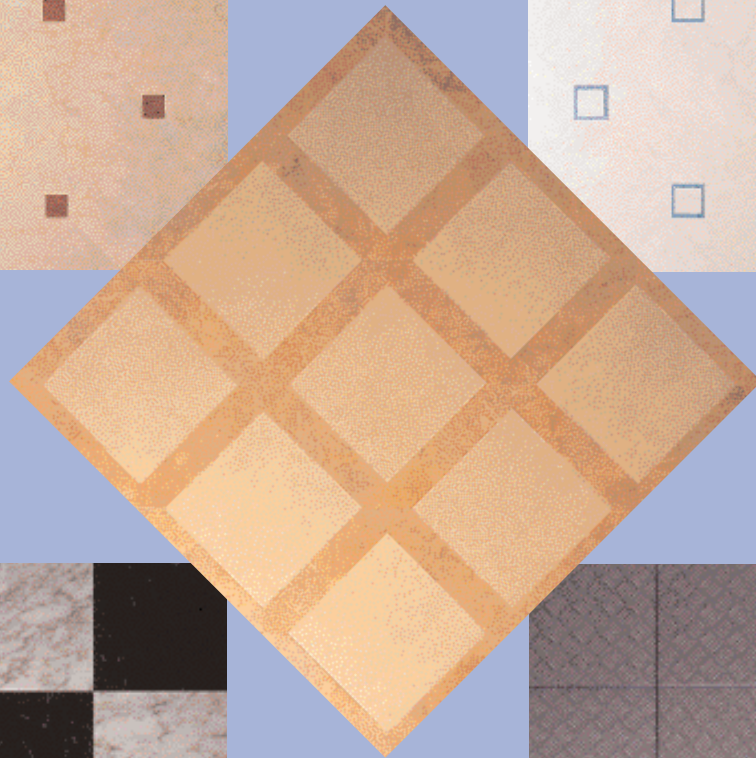
PUT FLAIR INTO FLOORING



Keystone



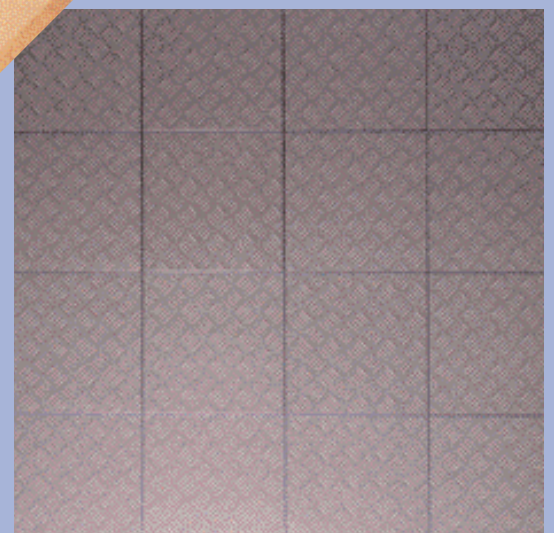
Framed Key



Trellis



Chequerboard



Lattice

VERY OFTEN, CHOOSING THE RIGHT PATTERN AND TYPE OF FLOORING IS ONLY THE BEGINNING. IT'S THE ADDITIONAL ELEMENTS SUCH AS DECORATIVE BORDERS, FEATURE STRIPS AND KEY SQUARES THAT MAKE THE DIFFERENCE BETWEEN AN ORDINARY FLOOR AND A STYLISH STATEMENT. AS YOU LOOK

THROUGH THIS BROCHURE, YOU'LL SEE THAT THE PREMIER COLLECTION OFFERS A STUNNING ARRAY OF STANDARD AND BESPOKE 'FOCAL POINT' FEATURES TO ENABLE THE CREATION OF FLOORS THAT ARE TRULY UNIQUE. CHOOSE A PREMIER DESIGN AND LET YOUR IMAGINATION SOAR!

BORDERS & FEATURE STRIPS

Creative application of decorative borders, feature strips and key squares can greatly enhance the overall appearance of a floor. In addition to their aesthetic appeal, they can also be used for delineating different areas or emphasising preferred pedestrian routes. The Marley Premier Collection includes 12 standard borders available in a variety of widths and 19 accent colours. Non-standard borders can also be accommodated.



BORDERS



Floral 150mm width



Circle 75mm width



Harlequin 75mm width



Victorian 150mm width



Square 100mm width



Ribbon Twist 100mm width



Roman Key 100mm width



Braid 100mm width



Rope 100mm width



Surf 100mm width



Geometric 150mm width



Traditional width varies

ACCENT COLOURS



Gold MAC38



Deep Green MAC24



Scarlet MAC34



Bronze MAC40



Light Green MAC26



Burgundy MAC36



Copper MAC42



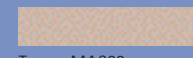
Brown MAC28



Black MAC10



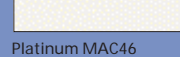
Silver MAC44



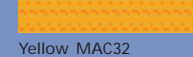
Taupe MAC30



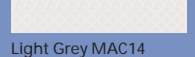
Steel Grey MAC12



Platinum MAC46



Yellow MAC32



Light Grey MAC14



Royal Blue MAC16



Wedgewood MAC22



White MAC20



Blue MAC18

MAKE FLOORS THE MAIN ATTRACTION

TRANSFORM A FLOOR INTO A BOLD AESTHETIC STATEMENT

BY MAKING USE OF THE STANDARD AND BESPOKE DECORATIVE FEATURES

IN THE MARLEY PREMIER COLLECTION



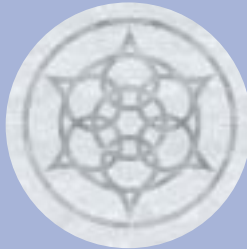
FEATURES

Very often a strategically placed decorative feature will bring fresh focus and emphasis to a floor area. We offer a range of standard templates, all of which can be adapted to blend beautifully with your choice of finish and design. Alternatively, designers

can incorporate a unique item such as a company logo or emblem to create a floor that is completely individual. At Marley Floors we have the technical expertise to ensure that your vision is successfully translated into reality.



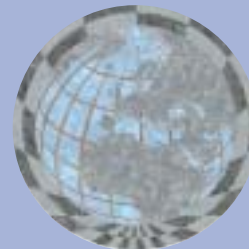
Premier Star



Celtic Circle



Roman Star



Globe Version II



Example of company logo



Clare Star



Petal Motif



Victorian Oval



Roman Scroll



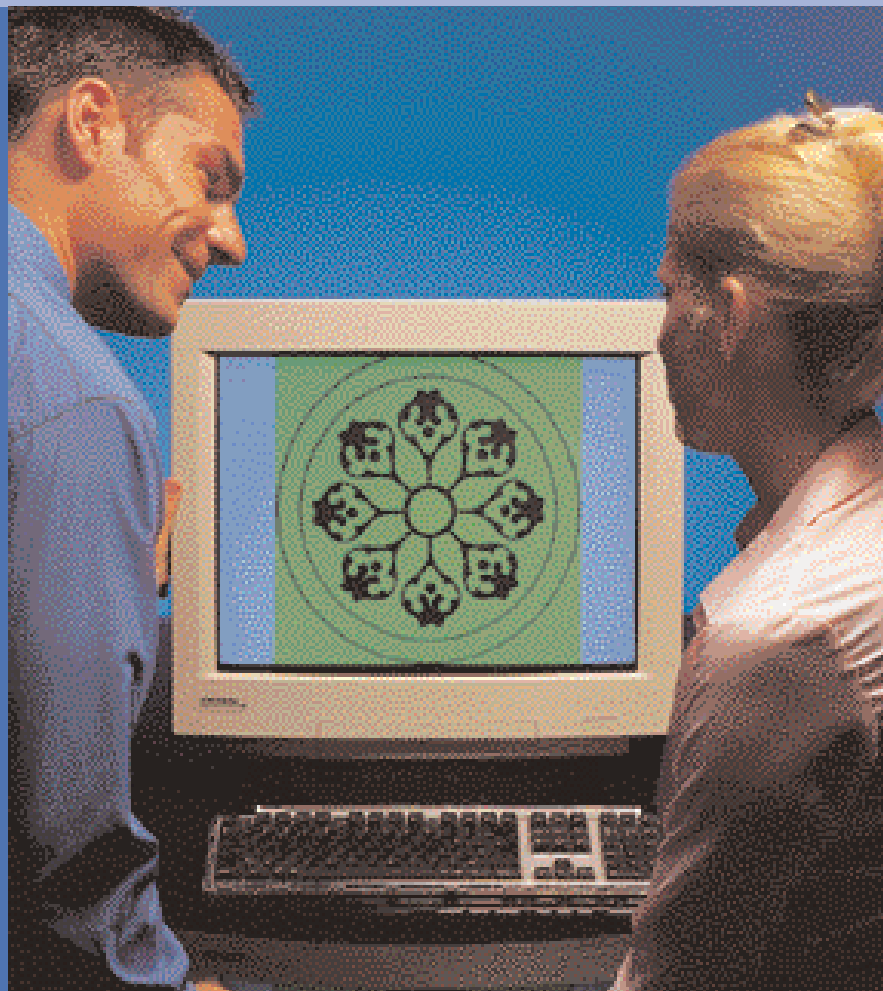
Example of company logo

DESIGN SERVICE

The Marley Floorcraft design service enables designers and architects to use state-of-the-art, computer-aided design technology to develop fresh ideas and create new concepts.

Whole flooring schemes – including alternative colourways, features and logos – can be built up and viewed on screen before a final decision is taken. Once a scheme has been approved, Floorcraft's computer-controlled precision cutting service will swiftly cut out each element of the design to create an attractive, long-lasting and fully functional floorcovering.

For further inspiration, ask for a copy of the Marley Floorcraft brochure.





LASTING
BEAUTY



INSTALLATION AND MAINTENANCE

INSTALLATION

Materials should be installed in accordance with BS 8203:2001. Subfloors must be smooth, hard clean and dry before laying. Uneven solid or suspended timber subfloors may need preparation to meet the required standard. In case of direct-to-earth concrete, a damp proof membrane must be included. The product must be allowed to relax for 24 hours in a room temperature of between 18° and 27°C prior to and during installation. Marley Embond 170 is recommended for use on absorbent and non-absorbent subfloors in normal conditions.

To avoid indentation problems, we recommend the use of acrylic rather than latex underlayments. Use of the Euro A2 notched trowel is also strongly recommended for this reason. The flooring should be rolled twice with a 68Kg roller directly after installation to flatten the adhesive ridges.

ADDITIONAL PRECAUTIONS

In service conditions subject to extreme temperature fluctuations (such as in a conservatory) additional precautions are necessary to accommodate the effects of thermal contraction and expansion during the installation period.

These are as follows:

1. The acclimatisation recommendations contained in BS 8203 should be strictly observed.
2. The temperatures of the area should be between 18°C and 27°C but must be CONSTANT in this range within +/-2°C.
3. The temperature of the area must be maintained during acclimatisation period, during installation and for at least 24 hours after installation to allow the adhesive to set.
4. In areas where solar gain is likely, i.e. Conservatories, installation should be timed to avoid fluctuating temperatures caused by the sun. Use Marley Embond 401 in Conservatories and where service temperatures will exceed 27°C.
5. Check that the tiles are correctly butted and have not been displaced during the installation process.

NOTE

Thermal expansion or contraction of the tiles before the adhesive has developed a bond, will result in expansion and contraction of the product and lead to either lipping or gaps at the tiles ends.

VARIATIONS OF TILES

Variations in the shade, grain and vein design of the wood-plank, marble and stone floorcoverings are natural features of this product. To maximise this effect, it is recommended that boxes are mixed and tiles are randomly laid.

MAINTENANCE

GENERAL

- To retain a floorcoverings performance and appearance it is important that it is well maintained
- The frequency of maintenance will vary according to the location and usage of the area

- Regular cleaning is more beneficial and cost effective than occasional heavy cleaning
- The recommendations contained within BS6263 Part 2: 1991 Care & Maintenance of Floor Surfaces should be noted
- Any maintenance products used should be selected and handled in accordance with the manufacturers instructions. Solvents should not be used

INITIAL TREATMENT FOLLOWING INSTALLATION

- The floorcovering should be protected, by covering with a suitable sheet material, until the area is commissioned for normal use
- Remove debris, loose dust and dirt by vacuum or sweeping
- Remove all traces of adhesive and other marks
- Thoroughly clean the floor with a damp mop and neutral detergent
- A polish may be applied for exceptionally heavy wear areas of infrequent maintenance or to change the level of gloss

BARRIER MATS

- An effective barrier at the door will trap the majority of moisture, dirt and abrasive particles being carried into the premises
- For commercial applications it is recommended that a barrier mat be the width of the door and at least 2 metres long

MANUAL MAINTENANCE

- Daily sweep and spot mop with neutral detergent
- As required, clean with a mop and a solution of neutral detergent
- Remove stubborn marks with a medium grade fibre pad and undiluted detergent
- If required reapply polish
- Strip and reapply polish as necessary

MACHINE MAINTENANCE

- Daily sweep or vacuum and spot mop with neutral detergent
- As required, spray clean using a machine with red pad and a solution of neutral detergent. Clean the pads regularly
- Remove stubborn marks with a medium grade fibre pad and undiluted detergent
- If required, use a scrubber dryer fitted with a green pad and then dry buff with buff/red pad to restore surface
- If a polish has been applied then this should be reapplied and stripped/reapplied as required

As Marley Floors operates a programme of continuous product improvement we reserve the right to amend the specification and maintenance recommendations of our products without prior notice.

For further information contact Customer Services on +44 (0) 1622 854040 Information on the maintenance of other Marley Floors' products are available via our website www.marleyfloors.com or from our Customer Services on +44 (0) 1622 854040

Marley Premier Collection - Marble & Stone

Prestige vinyl floorcovering to EN 649: 1997

The Premier Collection is a range of highly decorative effects capturing the beauty of natural and photographic designs beneath a tough clear wear layer, suitable for areas of heavy traffic including shops, department stores, schools and hospitals.

- Highly decorative natural and photographic designs
- Exceptionally hard wearing and durable
- Easy-to-maintain clear vinyl wear layer
- Create individual designs with borders, accent strips and features
- Install with Marley Embond 170, except in areas subject to radiant heat where Embond 401 epoxy adhesive should be used

As Marley Floors operate a programme of continuous product development, we reserve the right to amend the specification of our products without prior notice.

La collection Premier propose toute une série d'effets très décoratifs qui saisissent la beauté de motifs naturels et photographiques sous une couche d'usure transparente très robuste, et convient aux zones à passage important telles que des boutiques, des grands magasins, des écoles et des établissements hospitaliers.

- Motifs naturels et photographiques très décoratifs
- Résistance exceptionnelle à l'usure et très grande durabilité
- Couche d'usure en vinyle transparent d'un entretien aisé
- Création de motifs individuels avec des bordures, des filets de couleurs et différents accessoires décoratifs

Marley Floors a un programme d'amélioration continue de ses produits et, à ce titre, se réserve le droit de modifier sans préavis les performances techniques de ses produits.

Die Premier Collection ist ein Sortiment von äußerst dekorativen Effekten, die die Schönheit der Natur- und Fotodesigns unter einer transparenten schützenden Nutzschicht voll zur Geltung kommen lassen. Sie sind für vielbegangene Bereiche wie Einzelhandelsgeschäfte, Kaufhäuser, Schulen und Krankenhäuser geeignet.

- Sehr dekorative Natur- und Fotodesigns
- Außergewöhnlich strapazierfähig und haltbar
- Pfllegeleichte transparente Vinylschicht
- Individuelle Designs mit Kanten, Akzentstreifen und Mustereinsätzen

Da Marley Floors bestrebt ist, seine Produkte laufend zu verbessern, behalten wir uns das Recht vor, Produktveränderungen ohne vorherige Ankündigung vorzunehmen.

La colección Premier se caracteriza por toda una gama de efectos sumamente decorativos que capturan la belleza de diseños naturales y fotográficos bajo una capa dura y transparente para evitar el desgaste, recomendada para zonas con tráfico intenso, incluyendo comercios, grandes almacenes, colegios y hospitales.

- Diseños naturales y fotográficos sumamente decorativos
- Excepcionalmente duradero y resistente al desgaste.
- Fácil mantenimiento de la capa de vinilo transparente para evitar el desgaste.
- Creación de diseños individuales con ribetes, franjas y elementos bien marcados.

Dado que Marley Floors tiene en marcha un programa de mejora constante de sus productos, nos reservamos el derecho a modificar su rendimiento técnico sin previo aviso.

Product Data



Thickness

Overall thickness - 2.5 mm
Wear layer - 0.9 mm



Weight

3.3 kg/m²



Packaging (Tiles)

Marble & Stone: 300 x 300mm - 3.6m² (40 tiles)
300 x 450mm - 4.05m² (30 tiles)
Photographic: 450 x 450mm - 4.05m² (20 tiles)



Certification

EN 649
EN 685: 34, 43
NF189: NF UPEC Certificate no 314-009.1 U₁ P₃ E₂ C₂



Flame and Smoke

EN 13501 - 1: B_{fl} S₁
ISO 9239.1: >0.85 W/cm²
Epiradiateur: M3
DIN 4102 Part 14: Class B1

AS 1530.3: 17.8.6.6
ASTM E648: Category 1
NT FIRE 007: Class G
ASTM E662: Pass



Slip resistance

DIN 51130: R9
ASTM D2047: >0.9



Abrasion resistance

EN 660 - 2: Class T (a priori)



Indentation

EN 433: <0.10 mm



Chemical resistance

Good resistance to everyday substances.



Colour fastness

EN ISO 105 B02: Standard 7



Guarantee

10 year defective material guarantee, subject to correct specification, installation and maintenance

For full information regarding installation and maintenance, applications, adhesives and chemical resistance, contact Marley Floors Customer Services.

Pour plus d'informations concernant l'installation, l'entretien, l'utilisation, la résistance chimique de ce produit et les adhésifs appropriés, merci de contacter le service clientèle Marley Floors.

Für weitere Informationen bezüglich Installation, Reinigung und Pflege, Einsatzbereichen, Klebstoffen und Chemikalienbeständigkeit setzen Sie sich bitte mit dem Marley Floors Kundenservice in Verbindung.

Para mas información sobre su instalación y mantenimiento, aplicaciones, adhesivos y resistencia a productos químicos, por favor ponganse en contacto con el Departamento de Servicio al Cliente en Marley Floors.



Tarkett-Marley Floors Ltd
Lenham
Maidstone
Kent ME17 2QX
United Kingdom

tel +44 (0)1622 854040
fax +44 (0)1622 854520

www.marleyfloors.com
email uksales@tarkett.com





P R E M I E R

M A R B L E & S T O N E D E S I G N S

Exclusively | Commercial



www.marleyfloors.com