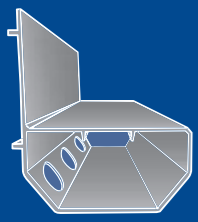
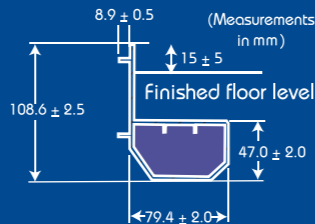


WaterGuard™ Technical Data

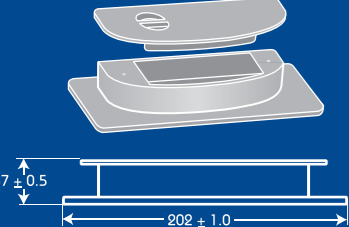
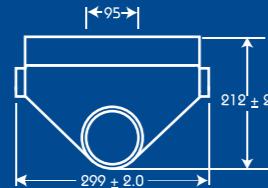
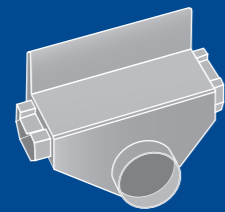


Formed of PVC 3mm thick. Will deliver up to 12.5 litres/sec when installed horizontally. Perforations are 20mm x 30mm oval and are patented. Flange spacers allow water to be collected off a wall surface and are also patented. A flangeless version of the channel is available for installation mid-floor.



WaterGuard™ drain outlet connects the WaterGuard™ channel into the SuperLiner™ via 100mm PVC pipe.

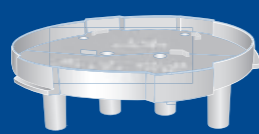
Inspection Ports :- Removable cap allows servicing of WaterGuard™ channels in accordance with BS8102:1990.



SuperSump™

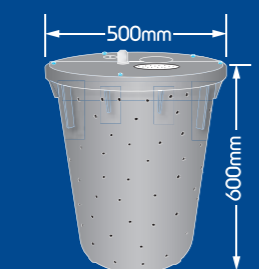


- Cast Iron switch case, motor & pump housing.
- Hermetically sealed permanently oiled bearings.
- Corrosion resistant powder coated epoxy finish.
- Pumps 1/2 Inch spherical solids.
- 240 volt AC 5 amp single phase.
- Automatic operation via stainless steel mechanical float switch.
- Bronze pump available for saltwater applications.
- Stainless steel screws, switch arm, guard & handles.
- Glass-filled polypropylene base.
- Engineered, glass-filled plastic impeller with metal insert.
- Bearing- lower & upper oil fed cast iron.
- Non-clogging Vortex Impeller.
- Two models available – standard U53, and high capacity U137– for pumping head capacity see charts below



PumpStand™

- Raises the pump off the bottom of the sump liner.
- Keeps the pump out of any silt & sediment in the bottom of the liner.
- Holds the pump in place, ensuring that the float switch cannot get caught on the side of the liner.



Sump Liners

- Purpose designed heavy duty polyethylene sump liner, sits in the ground housing the pump.
- Perforated version accepts groundwater from under the floor.
- Solid liner used in areas of sandy or silty soil to prevent silt ingress.
- SuperSump™: 600mm deep x 500mm Ø
- TripleSafe™: 600mm deep x 460mm x 660mm



SuperSump™ Split-Lid

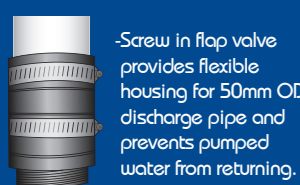
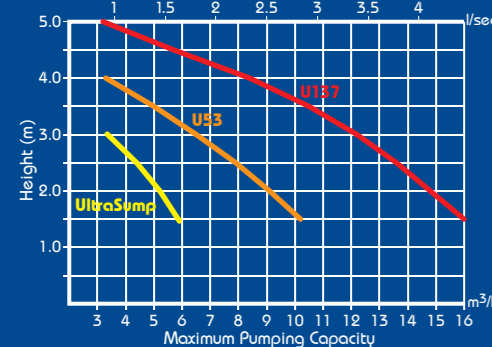
- Two piece lid allows easy access for pump service and is capable of sustaining loads up to Class A15: Table 6 of BS EN 124:1994.
- Contains knockout for a dehumidifier hose
- Houses drain valve which will accept surface water in the event of a plumbing leak or in a 'wash down' environment.



TuffTop™ Lid

- Solid heavy duty lid designed to take heavier loads than split lid.
- 20mm thick polyethylene with non-slip surface and flush mounted lifting eye. May be carpeted over.

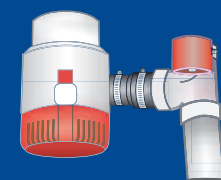
Pump Height (m)	U137 Rate (l/sec)	U53 Rate (l/sec)	UltraSump Rate (l/sec)
5.0	0.8	-	-
4.5	1.6	0.4	-
4.0	2.3	0.9	-
3.5	2.9	1.4	-
3.0	3.4	1.8	0.7
2.5	3.8	2.2	1.1
2.0	4.1	2.5	1.4
1.5	4.4	2.8	1.6



WaterWatch™

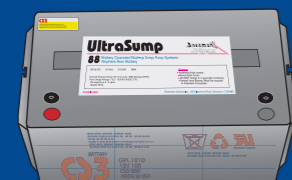
- 9 volt Battery operated sensor operates like an audible smoke alarm.
- Sounds if water level reaches to within 150mm of sump lid.
- Has on, off and test toggle switch.
- Corded (50m) and floor-mounted versions available.

UltraSump™



UltraSump™ Pump

- 12v DC standby pump with its own independent float switch.
- Pumps over 1 litre / sec to a 2.4m head.
- Will pump up to 36,000 litres on a single charge with one battery.



UltraSump™ Battery

- 88 Ampere Hour dedicated standby battery.
- 12 Volts, 310 WPC (15 minute rate to 1.67 VPC)
- 88AH (20 hour rate to 1.75 VPC).
- Terminal Hardware Torque: 65 (7.4) in.lbs. (NM) Retorque @ 75%
- Float Charge Voltage: 13.5 - 13.8 VDC @ 25°C (77°F).
- Life expectancy: 3 - 5 years.
- Weight: 30Kg, non-spillable & recyclable.

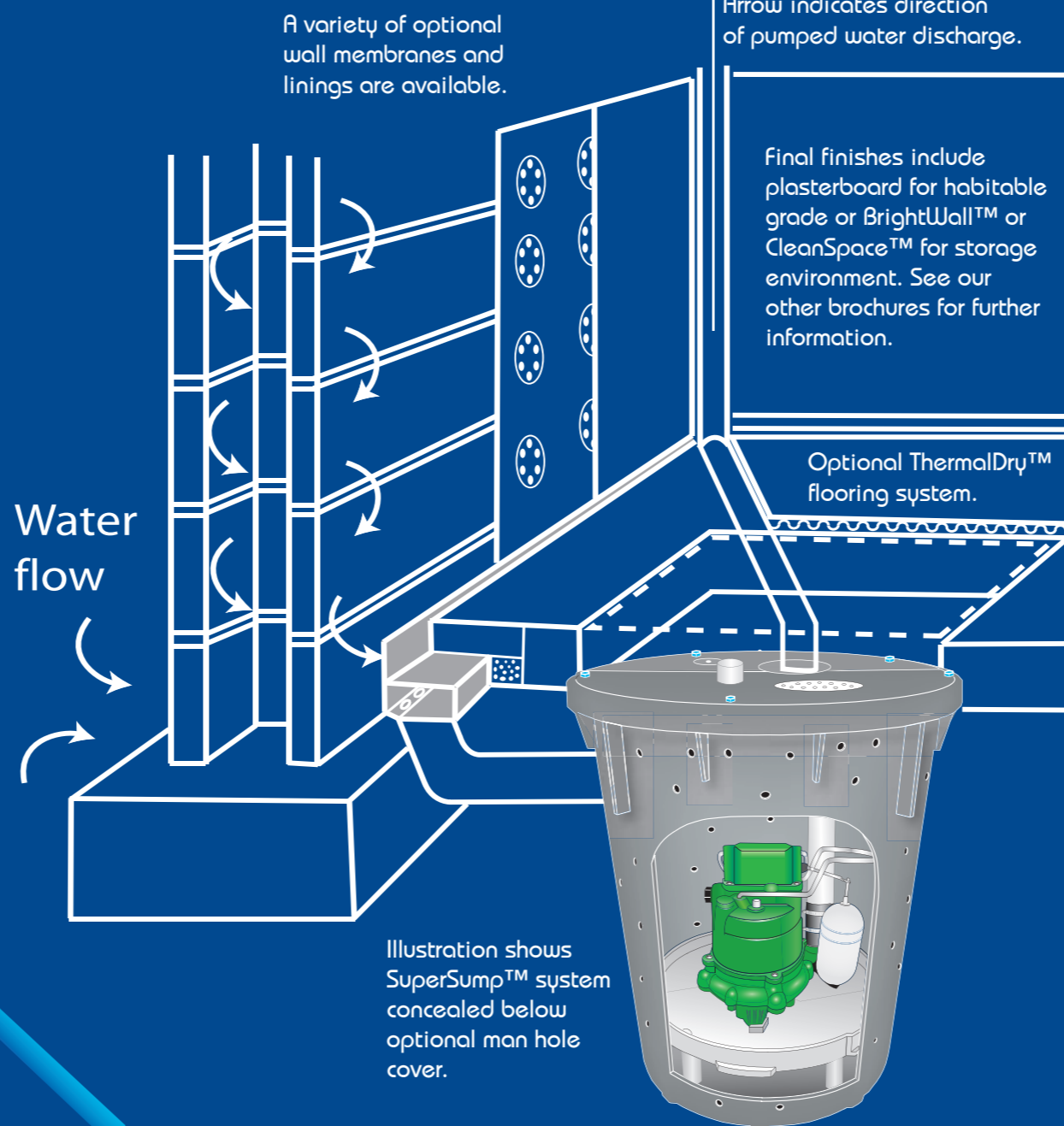


UltraSump™ Charger

- Smart charging system sounds alarm when the UltraSump™ is in use and recharges battery when power is restored.
- 240 volt AC single phase, 5 amp
- Smart charging system will trickle or boost battery as necessary.
- Built in alarm system will sound every time pump operates.
- Indicator lamp shows when battery is being charged/fully charged.
- Test switch allows backup pump to be test run.
- A separate control system allows for optimised discharge/recharge of two batteries in parallel.

Basement Waterproofing for the 21st Century

SuperSump™



A variety of optional wall membranes and linings are available.

Arrow indicates direction of pumped water discharge.

Final finishes include plasterboard for habitable grade or BrightWall™ or CleanSpace™ for storage environment. See our other brochures for further information.

Optional ThermalDry™ flooring system.

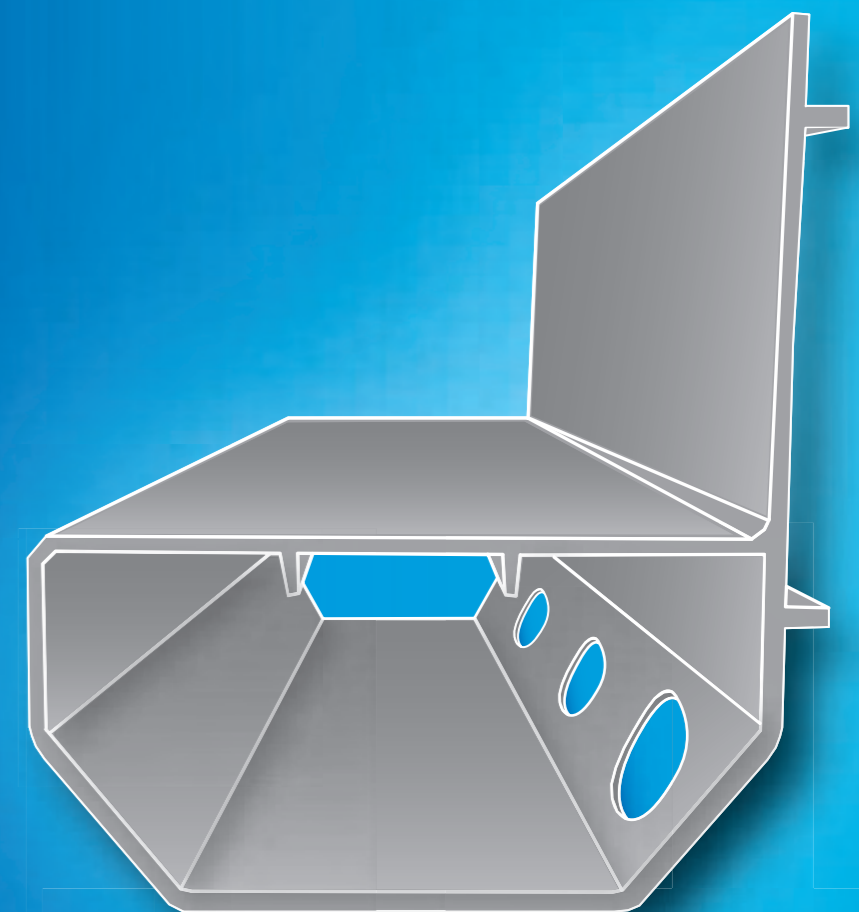
Water flow

Illustration shows SuperSump™ system concealed below optional man hole cover.

Your licensed Basement Systems Installer is part of the largest basement water control network in the world, comprising over 200 independently owned businesses sharing the philosophy of Leadership, Integrity, Innovation and Responsibility.

Trace Basement Systems
Unit 8, Hurst Mill, Hurst Road, Glossop, SK13 7QB
www.tracebasementsystems.com
Tel: 0800 3899040 Fax: 01457 866253

Basement Systems



WaterGuard™

- Winner of innovation and design awards
- Unique UK Patented design features
- The only BBA certified system of its kind
- Over 1.5 million metres WaterGuard™ installed worldwide



WaterGuard™

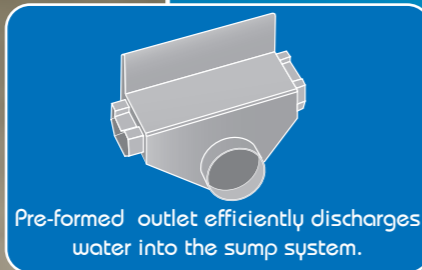


Flange allows water off the wall to enter the system and protects against dirt and debris. Patented lugs help maintain specific distance from wall.

Concrete laid to original floor level.

WaterGuard™ channel laid in a bed of 20mm stone in rebate around perimeter of floor.

Holes allow water to enter the channel. Patented size and shape to optimise water flow.



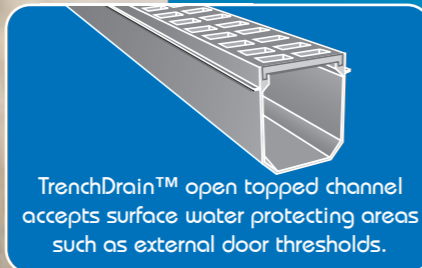
Pre-formed outlet efficiently discharges water into the sump system.



Inspection ports allow access for post-installation service.



A flangeless version is available for cross-floor installation (may be required in larger basement areas).



TrenchDrain™ open topped channel accepts surface water protecting areas such as external door thresholds.



Pre-formed corners assist with professional installation.

Turn your wet cellar into your favourite room



This beautiful room was created from a disused, flooded boiler room. Two SuperSumps™, both with battery backup, and WaterGuard™ channel are concealed under the floor.

TripleSafe™

TripleSafe™ offers three times the protection of a single pump.

Scenarios:

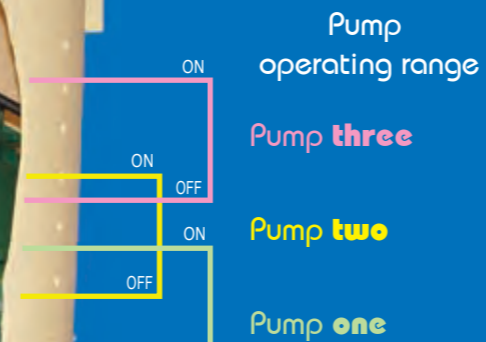
If pump **one** fails, pump **two** takes over.

If pump **one** can't keep up, both pump **one** and **two** operate.

If power fails, pump **three**, a battery operated UltraSump™, takes over.



Two U53 mains pumps and one UltraSump battery backup pump provide 'TripleSafe™' protection.



SuperSump™



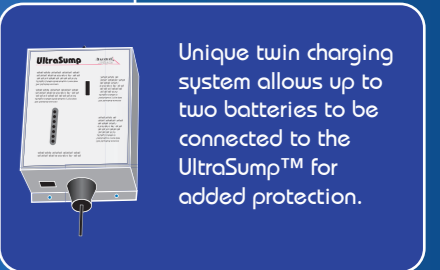
Flexible inline vibration suppressor to reduce noise

Battery backup float switch

Battery backup pump (UltraSump™)

Mains pump (Zoeller U53 or U137)

Pump stand



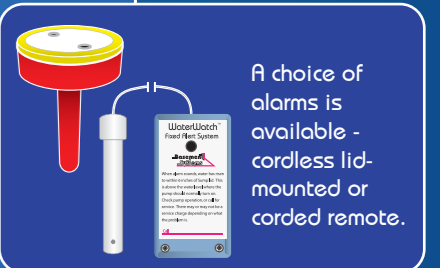
Unique twin charging system allows up to two batteries to be connected to the UltraSump™ for added protection.



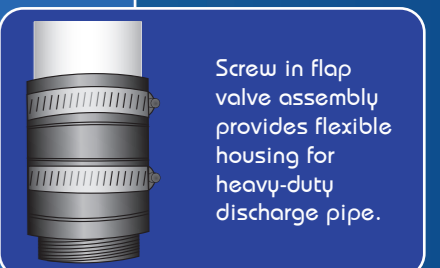
Long term standby battery allows for rapid discharge of power when needed.



Optional second mains pump (U53) or high-power (U137) pump available.



A choice of alarms is available - cordless lid-mounted or corded remote.



Screw in flap valve assembly provides flexible housing for heavy-duty discharge pipe.

■ The longest established and only British Board of Agrément certified basement sump pump system in the UK

■ Over 100,000 SuperSump™ systems installed worldwide

■ A variety of optional components allow a solution tailor made to your needs

■ Easy access for post-installation service by your licensed installer



© Basement Systems UK Ltd. 2005.

■ Relieves hydrostatic ground-water pressure, helping to create healthy dry living and storage environments

■ Effectiveness is independent of substrate condition, unlike bonded tanking systems

■ Frequently employed to solve problems where other systems have failed

■ Featured on Channel 4's 'Room for Improvement', the Independent Newspaper and Sky Discovery Channel