

# Variplan

**DORMA Hüppe.**  
The modern folding  
wall for creative  
space management.





Engineered to perfection and with a proven track record, the DORMA Hüppe Variplan is ideally suited even to heavy-duty applications.



The wide range of surface finishes available includes timber veneers and a range of laminates.





## Letting perfection unfold – with Variplan.

Installation of a smoothly extending DORMA Hüppe Variplan folding wall adds new, easily applied solutions to the problems of room division. Just a few steps and – in a short time – rooms are adapted to a new set of requirements. The Variplan folding wall is both simple to operate and – with

its ergonomically designed handle – easy to open for through-access. Yet, when closed, it offers all the advantages of a fully-fledged stationary partition wall: with its double skin construction, this smart system ensures both good sound and good heat insulating properties. So even the most demanding

concepts of living and working spaces can be turned into effective, elegant reality. DORMA Hüppe Variplan comes in a wide range of aesthetically attractive surface finishes, such as timber veneer and laminate, and generally offers excellent value all round.



## Configuring space with professional quality.

The DORMA Hüppe Variplan offers maximum creative scope for implementing new ideas in spatial configuration. With its composite panel construction, the system itself has a minimal footprint, whether open or closed. It is available as a single or double-wing system, but can also be designed as a three-wing solution for very large opening widths. Provided the planning work can be done at a sufficiently early stage, the track can be integrated flush with the ceiling

surface. However, retrofitting is also possible by bolting and fixing the rail against the ceiling surface and then enclosing it. And with no need for bottom guide rails, the floor remains free of disruptive profiles to spoil its appearance or trip over. Whatever the situation, installation is simple and can be carried out quickly. A variable range of options and accessories means that individual room designs can be accommodated with a tailored package. And this is

one of the reasons why DORMA Hüppe Variplan has proven such a success in so many locations. The system blends in beautifully in churches, homes for the elderly, kindergartens, as well as in schools, hotels, offices and private households. The number of application possibilities is virtually unlimited. Plus: the broad choice of surface designs allows each system to be ideally adapted to an existing interior or to generate individual styling effects within the room.





Minimal space requirement when open – one of the major benefits of the DORMA Hüppe Varioplan system.

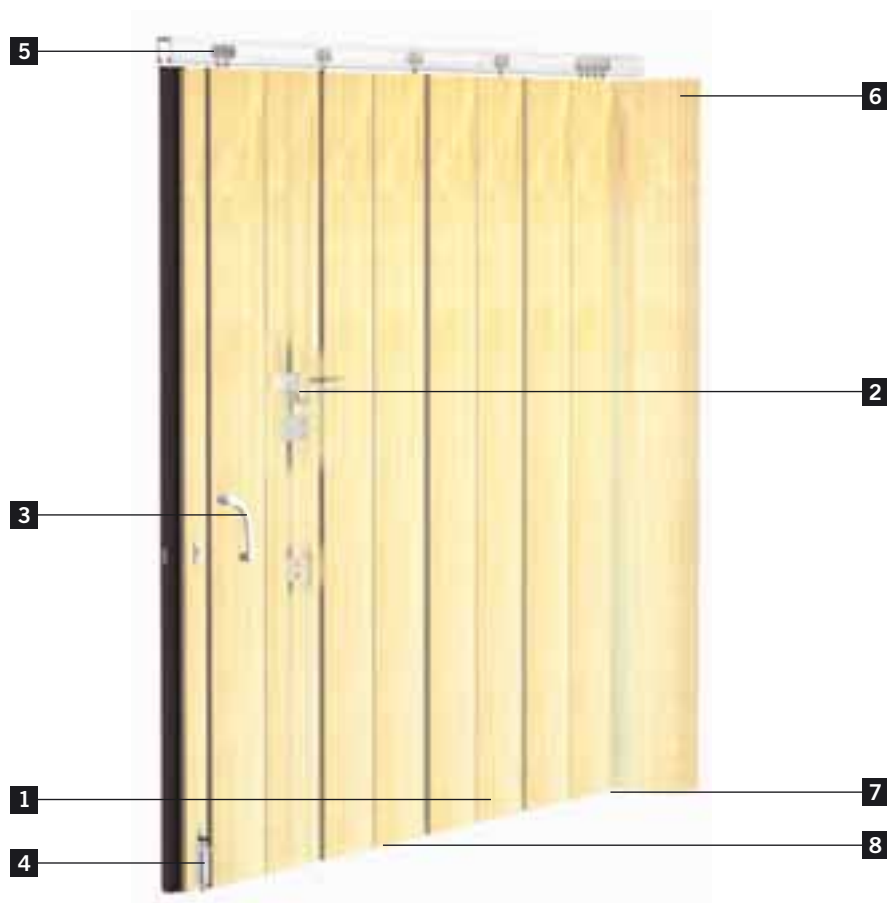




## ■ Satisfying high-demand spatial specs with Variplan.

The permanent flexibility available with this system in the division of living and working space opens up numerous practical and creative possibilities in room design. One of the special benefits is that Variplan forms a particularly narrow stack when opened, enabling it to be spirited away in a niche so that it is virtually invisible. There are two alternatives available for the design of the fold-

ing wall: Variplan with individually adapted panel sizes, all featuring the same dimensions, or Variplan S with prefabricated standard panels where adaptation to the structural width is achieved with one or two adapter panels and/or a wall abutment extension. Whichever concept is chosen, the DORMA Hüppe Variplan is sure to please – technically, economically and aesthetically.



#### DORMA Hüppe Variplan technology.

**1** When closed, the DORMA Hüppe Variplan has the same effect as a stationary wall – smooth and solid. The panels are of 13 mm 3-ply quality particleboard, and the double skin construction ensures good noise and heat insulation.

**2** The lever and spring mechanism produces an absolutely flush surface when the partition is extended, and it also provides the system with outstanding stability. If through-access is needed, only those elements corresponding to the required opening width need to be book-folded open.

**3** The ergonomically designed handle (available in white or brown) initiates an easy folding/unfolding action.

**4** The DORMA Hüppe Variplan partition can be secured in any position with optional padded friction bolts (wing holders).

**5** Plastic-tyred track rollers mounted in ball bearings run on an aluminium rail fixed to the ceiling. The rollers are individually sprung to give maximum ease of operation and minimal operating noise.

**6** Even when the partition is open, the panel stack exudes elegance.

**7** No floor guide. The continuous floor surface thus remains intact.

**8** Bottom brush seal for draft exclusion.

**Space and function  
by design.**

DORMA Hüppe movable walls and partitions – defining space for enhanced quality of life: Variflex sliding partitions for efficient sound insulation; Varitrans horizontally sliding glass elements; Varitec vertically sliding glass elements. The portfolio that offers the right design solution to suit every taste and requirement.



**Door Control**



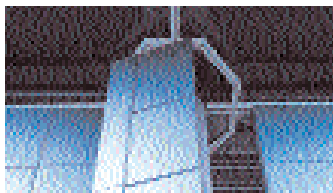
**Automatic**



**Glas Fittings and Accessories**



**Security/Time and Access (STA)**



**Movable Walls**

**DORMA UK Ltd.**  
Huppe Movable Walls Division  
No. 9, Lloyds Court  
Manor Royal, Crawley  
GB-West Sussex RH10 9 QW  
Phone +44 1293 616666  
Fax +44 1293 617777  
dormahuppe@dorma-uk.co.uk  
www.dorma-uk.co.uk

**DORMA Hüppe Asia Sdn. Bhd**  
P.O. Box 55  
PLO 217 Kawasan Perindustrian  
Senai IV  
MV-81400 Senai, Johor  
Phone +60 7598 5730  
Fax +60 7598 5729  
www.dorma-hueppe.com

**DORMA Polska Sp. z o.o.**  
Division Huppe Movable Walls  
ul. Finalowa 9  
PL-05-090 Raszyn  
Phone +48 22 7201032  
Fax +48 22 7201163  
huppe@dorma.com.pl  
www.dorma.pl

**DORMA Hüppe**  
Raumtrennsysteme  
GmbH + Co. KG  
Industriestraße 5  
D-26655 Westerstede/Ocholt  
Postfach 2190  
D-26648 Westerstede  
Phone +49 4409 666-0  
Fax +49 4409 666-489  
info.hueppe@dorma.com  
www.dorma-hueppe.com