

# Bloomberg Place



CAS designed and manufactured two chilled water prefabricated plantrooms for the new office buildings for Bloomberg L.P in the city of London.

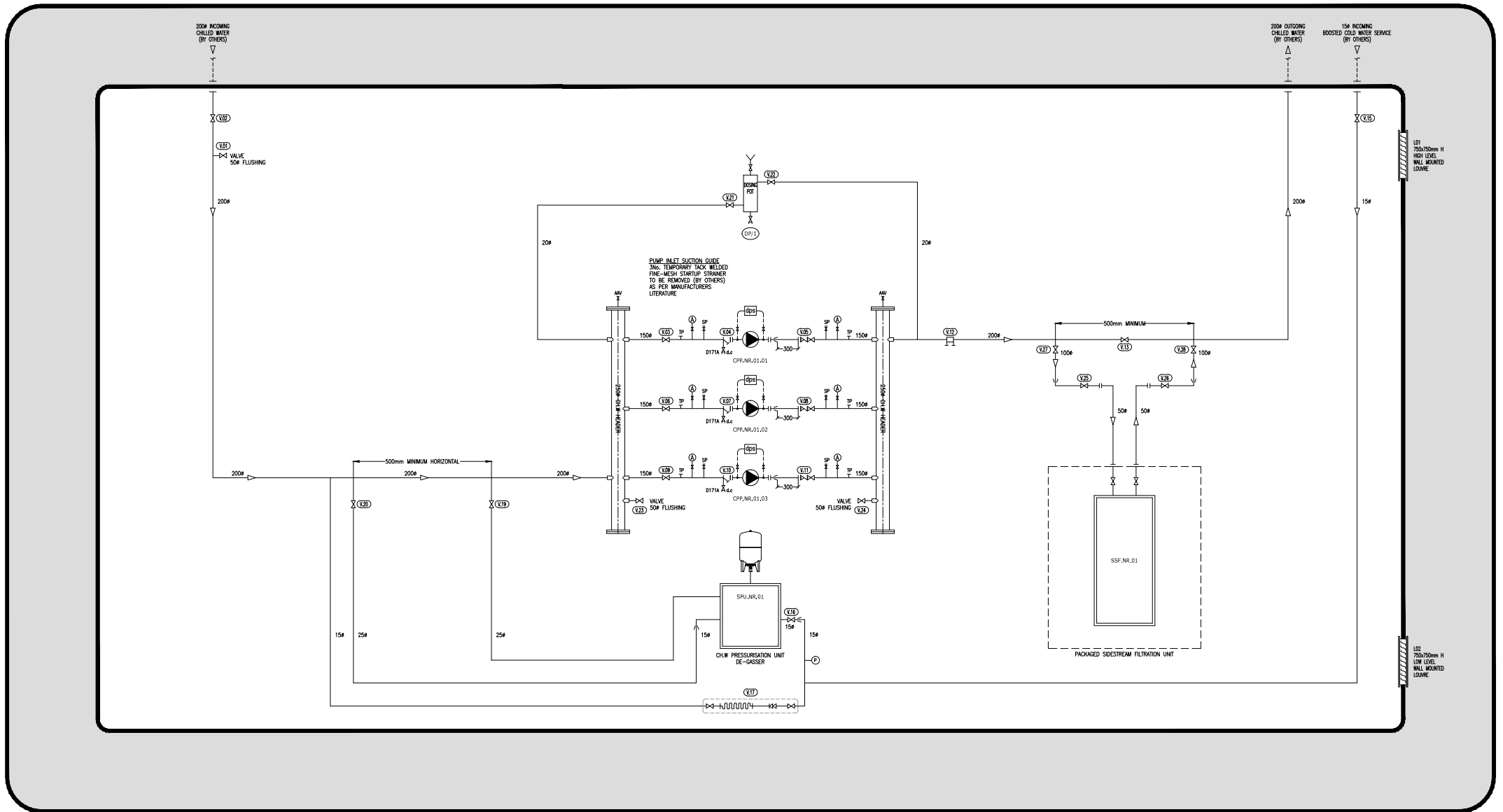
Each plantrooms final solution featured the following services supplied free issue for CAS to install:

- 3 No. Single head chilled water circulating pumps
- A pressurisation de-gassing unit.
- A packaged side stream filtration unit.
- Controls, lighting/emergency lighting and small power.
- Internal drainage

The finished plant rooms measured 5.5m x 3.0m x 3.0m high.

**See reverse for schematic arrangement.**





CAS PLANTROOM SCHEMATIC LAYOUT  
 BLOOMBERG PLACE