

Imagination

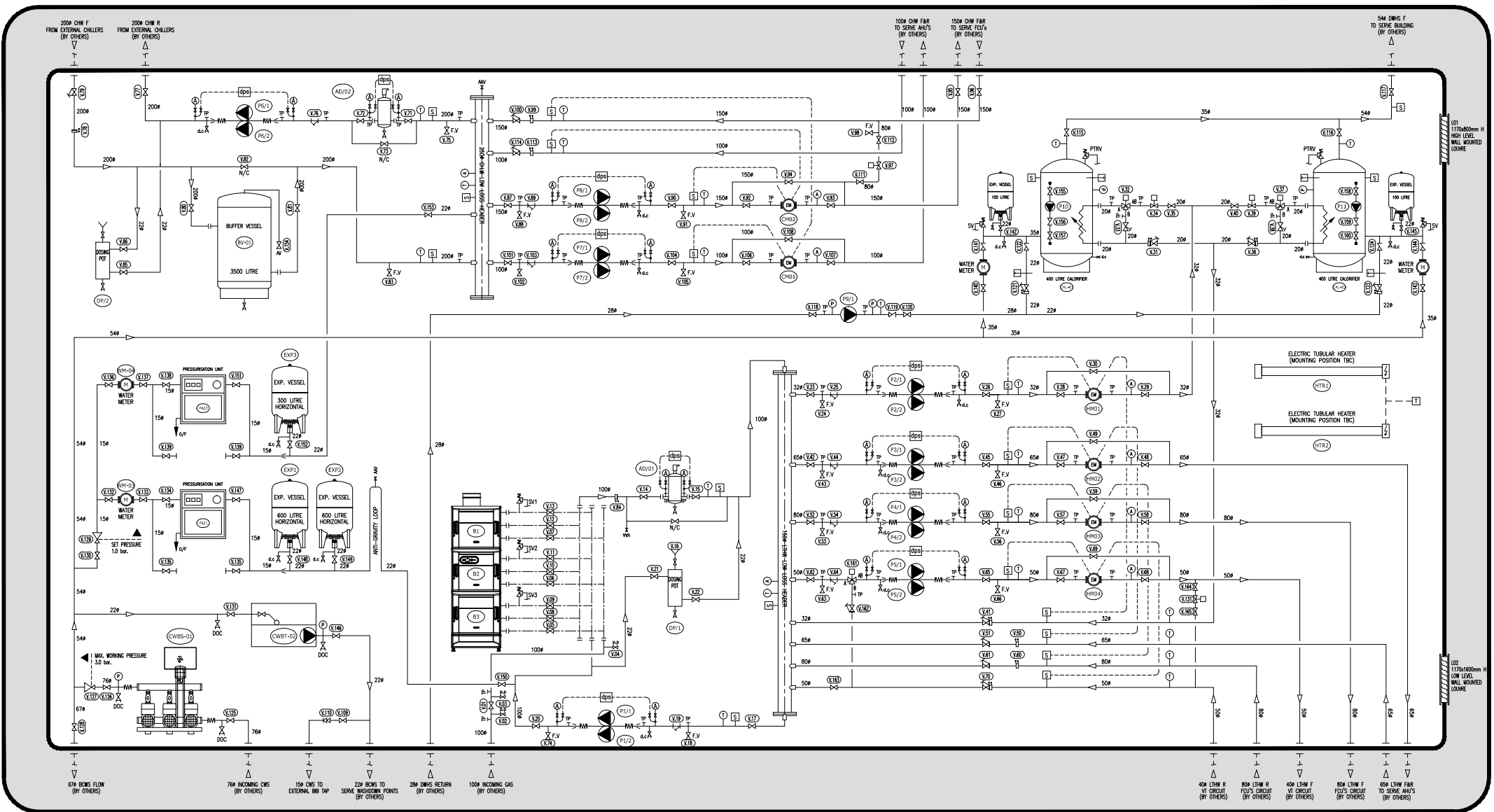


CAS designed and manufactured a prefabricated packaged plantroom for a technologies company in Kings Langley, Hertfordshire. The final solution featured the following services:

- A Three sectional gas fired boiler.
- A twin head shunt pump.
- 4 No. twin head low temperature hot water circulating pumps.
- 3 No. twin head chilled water circulating pumps.
- 2 No. 400 litre hot water service calorifiers.
- A low temperature hot water twin pump pressurisation unit complete with two 600 litre expansion vessels.
- A chilled water twin pump pressurisation unit complete with a 300 litre expansion vessel.
- A 3500 litre chilled water buffer vessel.
- A three pump cold water booster set.
- A wash-down booster set
- Controls, lighting/emergency lighting and small power.
- Internal drainage

The finished plant room was 9.0m x 5.5m x 2.8m high.

See reverse for schematic arrangement.



CAS PLANTROOM SCHEMATIC LAYOUT
IMMAGINATION