

Waitrose



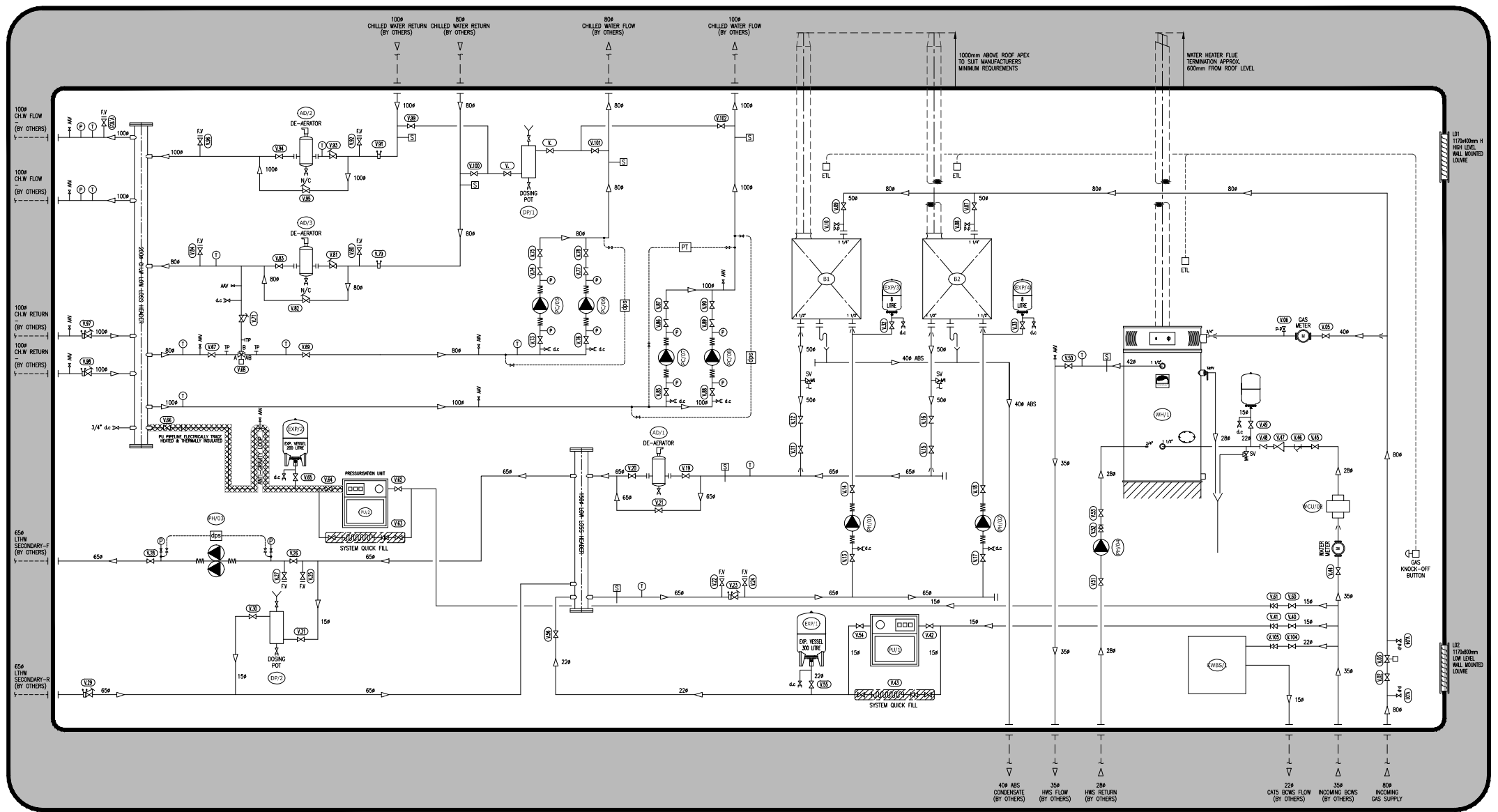
CAS designed and manufactured a prefabricated packaged plantroom for the new Waitrose store in Guildford.

The final solution featured the following services:

- 2 No. Gas fired boilers, each with an output of 200kW and each with an 8 litre expansion vessel.
- 2 No. Single head boiler shunt pumps.
- A twin head LTHW secondary circulating pump.
- 4 No. Single head chilled water circulating pumps.
- A single head HWS circulating pump.
- A single head cold water booster pump.
- 2 No. 400 litre hot water service calorifiers.
- A LTHW pressurisation unit complete with a 300 litre expansion vessel.
- A chilled water pressurisation unit complete with a 200 litre expansion vessel.
- A 230 litre hot water heater with an unvented kit comprising of, combined reducing valve/strainer, check valve, expansion valve, expansion vessel, temperature/pressure relief valve and tundish.
- Controls, lighting/emergency lighting and small power.
- Internal drainage

The finished plant room was 6.2m x 3.8m x 3.0m high.

See reverse for schematic arrangement.



CAS PLANTROOM SCHEMATIC LAYOUT
WAITROSE GUILDFORD