

Fenwick, Bracknell



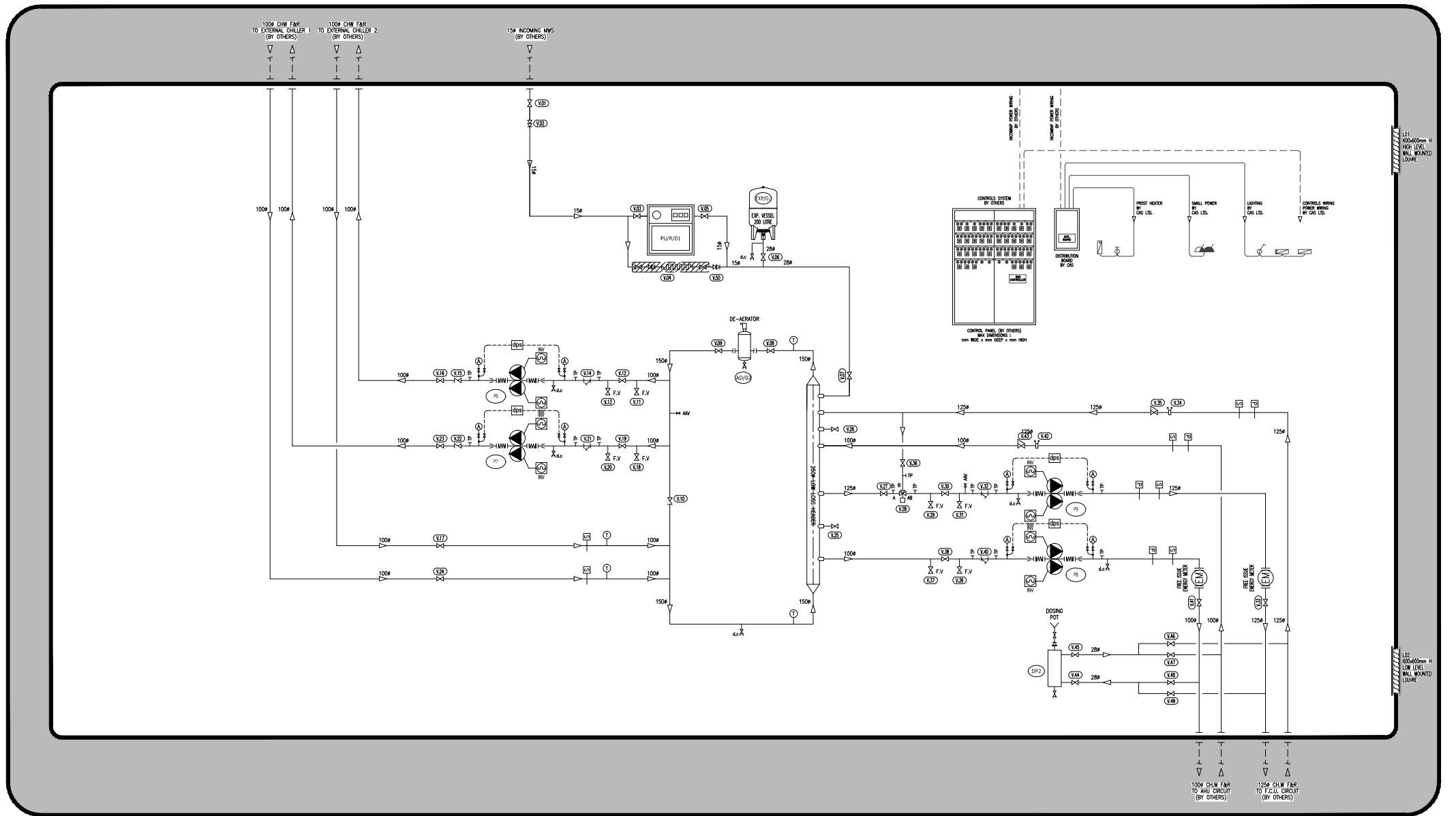
CAS designed and manufactured a chilled water prefabricated packaged plantroom for the new Fenwick Store in Bracknell. The final solution featured the following services:

- A chilled water pressurisation unit complete with a 200 litre expansion vessel
- 4 No. Twin head chilled water circulating pumps
- A 10 litre dosing pot
- Controls, lighting/emergency lighting and small power.
- Internal drainage

The finished plant room was 7.5m x 3.75m x 3.0m high.

See reverse for schematic arrangement.





CAS PLANTROOM SCHEMATIC LAYOUT
FENWICK CHW