



Norbord®

make it better



SterlingOSB Fire Solutions

Reduce the risk of fire spread during construction of timber frame buildings*

*For use in accordance with STA separation guidelines for buildings with total floor area > 600 sq. m.



Outstanding Safety Barrier

SterlingOSB Fire Solutions has been developed specifically in response to the STA (Structural Timber Association) published guidelines for reducing fire spread in large (total floor area >600m²) timber frame buildings during the construction phase when fire resistant finishes (dry lining) are not yet in place.

The purpose of the guidelines is to reduce potential radiant heat emissions to acceptable levels, so that the risk of fire spread to neighbouring buildings is controlled should a fire occur during the construction process.

Completed timber frame buildings (dry linings fixed) are then fully compliant with the Building Regulation fire protection requirements.

The guidelines enable the designer either to specify a type of timber frame with inherently reduced fire spread properties or, where suitable, to adapt the construction process to allow the use of standard open panel timber frame.

The guide includes three generic categories of timber frame with increasing resistance to fire spread and associated reduction in radiant heat to neighbouring buildings, as well as giving a detailed test and approval protocol by which systems or product assemblies can demonstrate compliance with any given category.

These categories allow the designer to select the appropriate frame specification to construct a timber frame building based on the separating distances present on the site.

The three generic categories of timber frame are:

Category A

Standard open panel timber frame

Category B

Reduced fire spread timber frame

Category C

Fire spread resistant timber frame

SterlingOSB Fire Solutions are available in a variety of specifications designed, when used in conjunction with Rockwool insulation, to match the categories in STA guidelines:

SterlingOSB FS - 300™

SterlingOSB/3 9mm with intumescent coating on both sides of the panel

SterlingOSB FS - MgO™

SterlingOSB/3 9mm with bonded 3mm MgO board

SterlingOSB FS - MgO 150™

SterlingOSB/3 9mm with bonded 3mm MgO board on one side and intumescent coating on the other

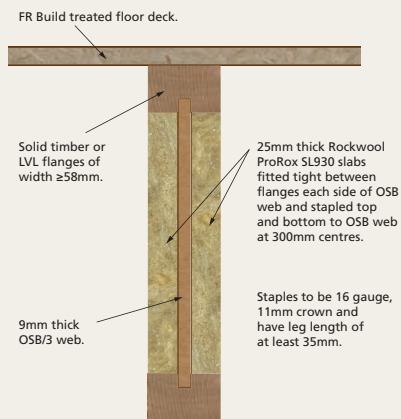
SterlingOSB3 Fire Solutions at a glance

Matrix of wall and floor assemblies providing solutions to fire spread during construction phase

STA wall ref.	STA floor reference	F3.2	Alternative F3.2	Alternative F3.1	F4
	Deck details	FR Build decking	Rockwool-protected 15mm untreated OSB/3	Rockwool-protected 15mm untreated OSB/3	15mm untreated OSB/3
	Joist details	Rockwool-protected OSB-web I-joists	Rockwool-protected OSB-web I-joists	FR Build solid timber joists	Untreated solid timber or OSB-web I-joists
Sub-classification					
W7	9mm OSB/3 sheathing - NoBurn intumescent both sides	B3	B3	B3	B3
W7	Composite OSB/3-MgO sheathing - MgO layer on cavity side	B3	C*	B3	C*
W8	9mm OSB/3 sheathing - NoBurn intumescent both sides with A1/A2 internal lining	C	C	C	C
W8	Composite OSB/3-MgO sheathing - MgO layer on cavity side with A1/A2 internal lining	C	C	C	C
S8	OSB/3-MgO sheathing with intumescent coating - MgO layer on studwork side	B3	C*	B3	C*

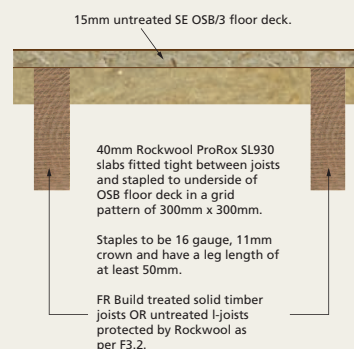
* refer to section 6, combination 4, STA Product Paper 4

F3.2



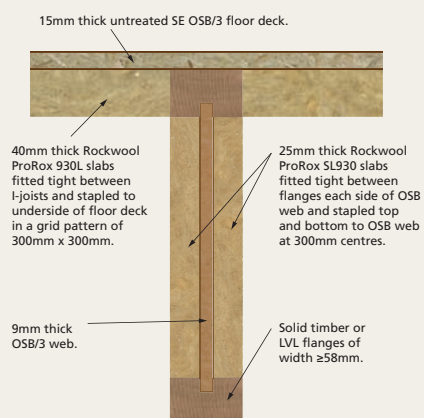
This system achieves 2 points*

Alternative F3.1



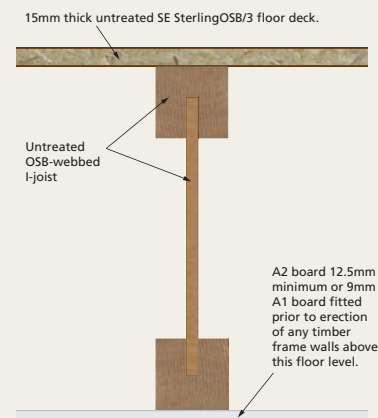
This system achieves 2 points*

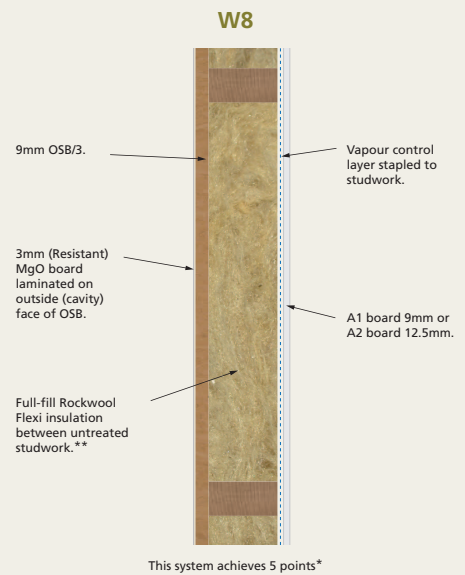
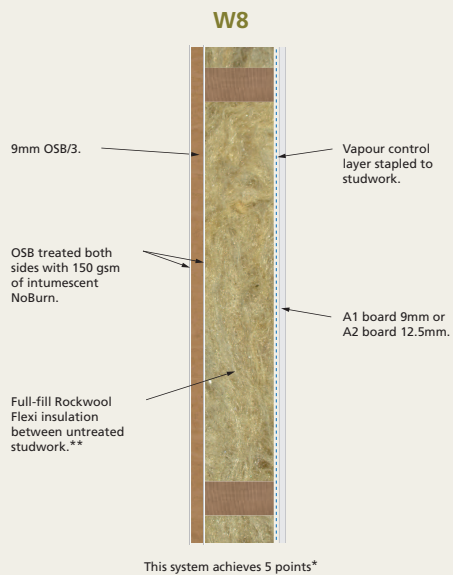
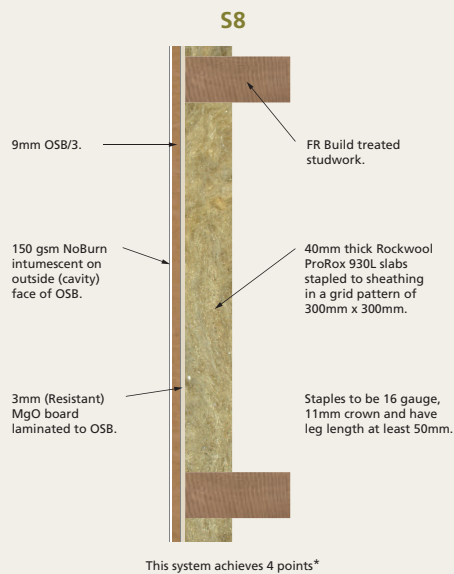
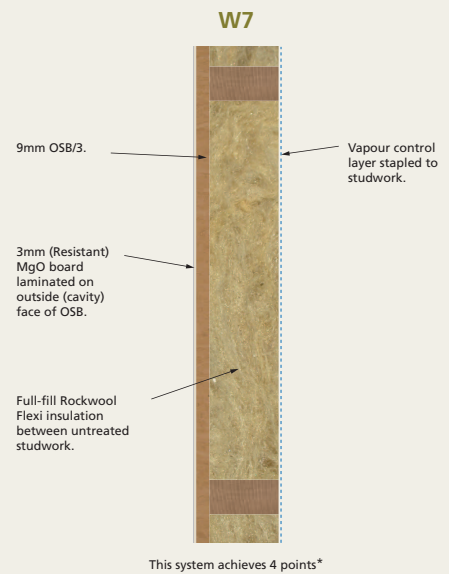
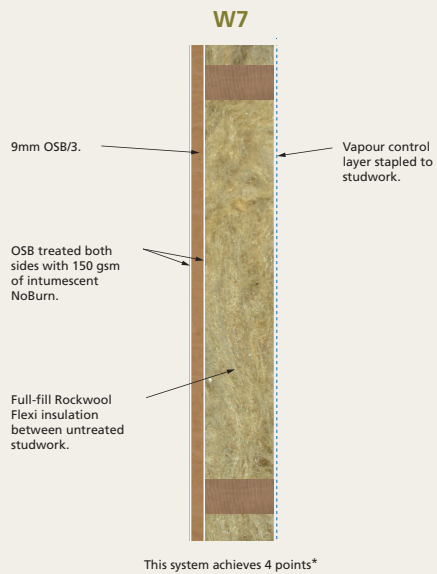
Alternative F3.2



This system achieves 2 points*

F4





* In accordance with STA Product Paper 4.

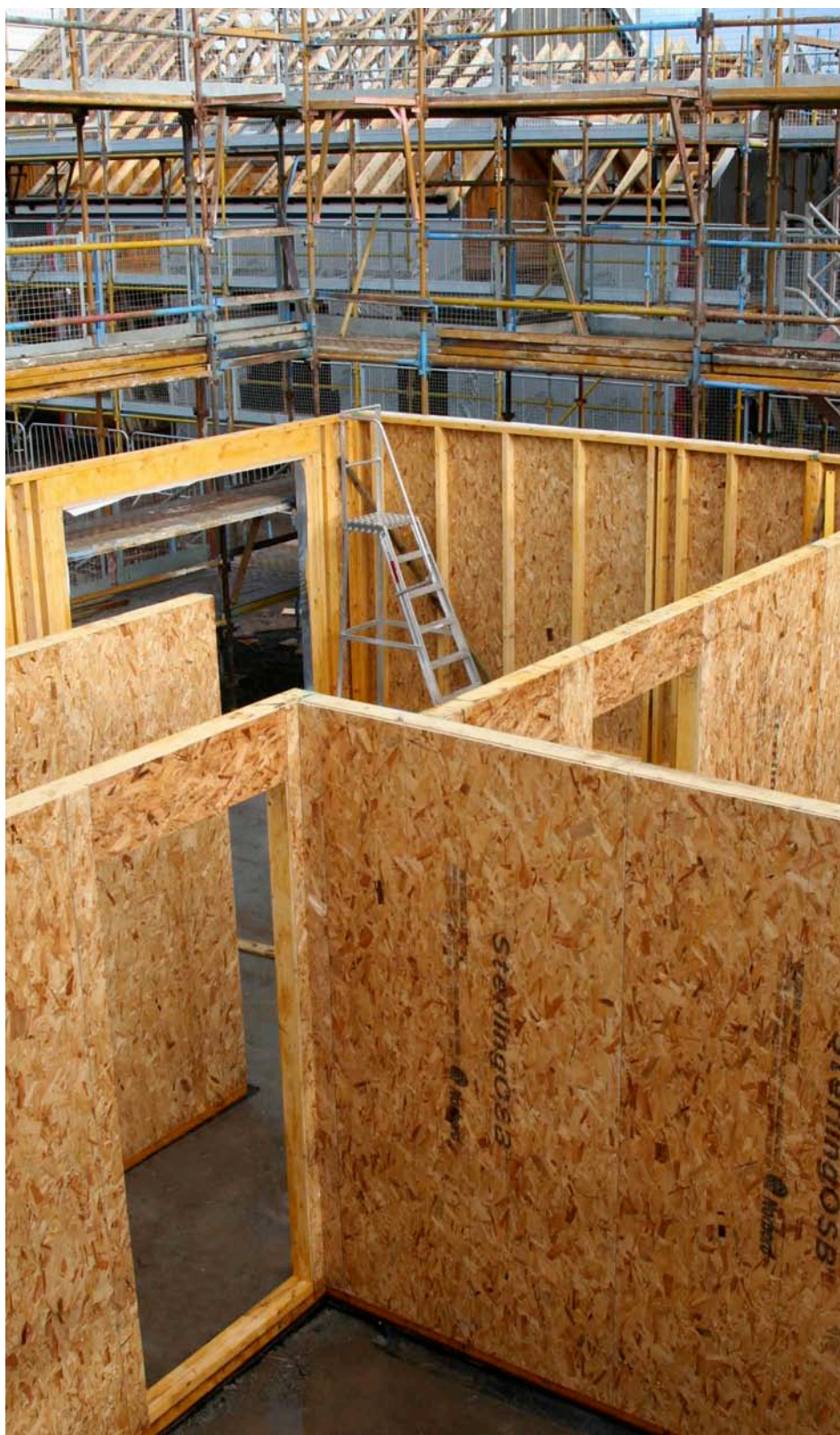
** Also possible to use Full Fill FI Type 2 Insulation between untreated studwork (Glass wool).





make it better

 **SterlingOSB Fire Solutions**



In addition to its reduced fire spread properties, SterlingOSB Fire Solutions have all the inherent benefits of SterlingOSB.

SterlingOSB Fire Solutions are environmentally friendly because of the materials we use, the way we manufacture it and the number of miles clocked up transporting it.

That's why we say about it, as we do all our products – it's better by nature.

**For further information
call 01786 819 225 or visit
www.norbord.co.uk**



OUR VALUES



TRUST



EXCELLENCE



CUSTOMERS