

a unique and complete package
giving you project peace of mind



To consistently contribute to the
overall success
of our clients' projects

by partnering with them and striving to give
exceptional service
throughout every contract.





Understanding your challenges,
we provide a **flexible, yet reliable service**
to assist you in your goal
for **project success**

Welcome

We are the UK's premier supplier of quality timber and steel doorsets and glazed timber screens, focusing within the M25 but with capabilities to deliver across the country. Whether you require your timber doorsets for a refurbishment, fit-out or new build project that is commercial, or within the education, healthcare, or leisure sector, or when you're searching for durable steel and timber solutions in a wide range of finishes and materials, look no further than Stemko Group.

Services

Commercial property refurbishment, commercial fit-out and new build projects are a complex project management balancing act. Reduce that complexity, reduce your project management effort and save money by choosing a commercial timber doorset manufacturer with a proven track record to deliver more.

Stemko Group offers a unique service by bringing together the supply and installation of total doorset and screen packages. Our involvement throughout each project, from design development through to snag-free installation, provides complete Project Peace of Mind.

Accreditations and environment

As a responsible company, we hold the necessary accreditations and certifications, such as ISO 9001: 2008, FSC®, PEFC, CHAS and Constructionline, as well as employing health and safety consultants, Citation plc. This gives you further project peace of mind, knowing that these essential areas are not being overlooked. We are also passionate about the environment we live in, so measures are continuously taken to ensure that our impact on it is kept to an absolute minimum.

8 good reasons to choose Stemko Group to save money and reduce your project management time

- Simple briefing to save time and effort
- Direct access to knowledgeable staff
- Creative solutions that look and function fabulously
- A total service to save money and reduce project management time
- Simple to understand quotes and estimates to make it easy to see where relative costs lie
- Wide range of timbers and finishes to deliver the look you want
- High quality products that will continue to look great and last
- Top-class customer service and account management

The key sectors we work in

- Commercial building, fit-out and refurbishment projects
- University, school, college or other educational building and refurbishment projects
- Hospital, health centre or care home timber, building and refurbishment projects
- Theatre, hotel, leisure centre, health club or other leisure building fit-out and refurbishment projects



Top quality products supported by a stellar customer service

Timber doorsets

Heavy-duty doors are made from responsibly resourced timber available in standard sizes or to bespoke specification. Available in a variety of finishes we have fire and acoustic ranges plus other special features.

Glazed timber screens

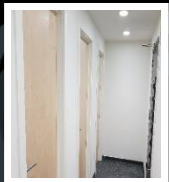
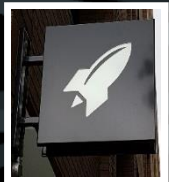
Timber glazed screens are an integral aspect of many modern commercial interiors. We have screens to suit every requirement. Fire resistant, acoustic screens are available, and all are aesthetically appealing with durable functionality.

Steel doorsets

Constructed to deliver durability, security, and quality. Suitable for commercial, education, healthcare, and leisure projects. These internal and external bespoke doors can be manufactured to a variety of fire and acoustic ratings, including vents and fire vents where necessary.



case studies



RBS Pluto Case Study

- Contractor: Overbury
- Location: London
- Product supplied: Natradoor+, Natraframe LS & Natramould APR

This Project is the product of a partnership between RBS and RocketSpace. Since launching in 2011, RocketSpace have brought Velocity to the World's Top Innovators, including Uber, Blippar and Spotify. This State-of-the-art campus is designed specifically for high-growth tech startups and is RocketSpace's first international location. Members have access to hands-on workshops, peer group roundtables, trend talks and networking events, among other services.

Stemko Group was offered an opportunity by Overbury to supply and install our Doorsets to this innovative fit-out and refurbishment project. Having worked with Overbury on numerous projects, we knew that we would be able to meet their expectations and their client's specifications, once again providing Project Peace of Mind on this exciting endeavour.

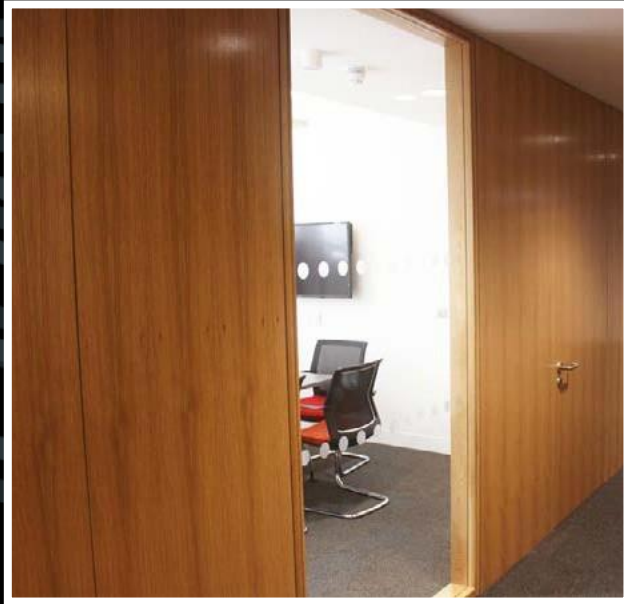
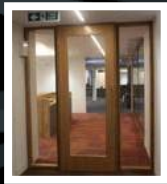


City University London – Tait Building

- Contractor: Overbury
- Location: London
- Products supplied: Natradoor+, Natraframe LS & Natramould APR

City University London's Tait Building which houses the School of Engineering & Mathematical Sciences, the School of Health Sciences and Oliver Thompson lecture theatre experienced remodelling of the existing First Floor to provide Student Union offices and shop, faith areas, informal study, touchdown and meeting rooms, café, function space, new and refurbished toilets, feature staircase and replacement of soil risers.

Having worked with us in the past, the winning bidder, Overbury, tasked Stemko Group with the supply and installation of Doorsets on this project. They knew we would provide them with Project Peace of Mind every step of the way.



UCL Cruciform Building

- Contractor: Mulalley
- Location: London
- Product supplied: Natradoor+, Natraglaze

The Hub was designed to meet high standards of environmental good practice, from use of FSC certified timber to increased natural daylight and occupancy sensors. It has features as a Case Study in UCL's Sustainability Annual Report for 2014 and also received a RICS SKA Gold award. In 2016 the Hub has achieved Silver in the UCL Green Impact Awards.

Stemko Group supplied the Timber Doors, Frames and Glazed screens you pictured here and are proud of our continued efforts in this sector.



Chai Cancer Centre

- Contractor: Jarvi Contracting
- Location: North London
- Products supplied: Natradoor+, Natraglaze

Operating from 8 sites around the country, Chai Cancer Care provides comprehensive, professional and expert services to any member of the Jewish community affected by cancer.

Recent extensive extension and refurbishment to their North London clinic required the specialist input of Stemko Group to provide internal timber glazed screens, internal timber acoustic doors, and external sliding sash windows which would match the existing properties windows. Partnering with Stemko Group gave the client complete project peace of mind, as they knew from previous contracts we had worked together on that we would have the knowledge and experience to provide the correctly specified products, whilst matching the non-standard design requirements of the clinic.



Vox Conference Centre, NEC

- Contractor: Overbury plc
- Location: Birmingham
- Products supplied: Natradoor+, Natraframe LS & Natramould APR

The prestigious Vox Conference Centre has been created to further enhance these facilities, offering a luxurious environment for any convention or conference. The vision behind the venue was the need to be different and cutting edge, to stand out rather than fade into the background. With a design and specification that reflected the vision, the fit-out contract was awarded to Overbury plc, who in turn knew that they could rely on Stemko Group, having Project Peace of Mind that we would deliver the products and service required to ensure that the vision was realised.



New Cross Hospital

- Contractor: Kier Construction Limited
- Location: Wolverhampton
- Products supplied: Natraglaze, Natramould APR

The brand new state-of-the-art £38 million Urgent and Emergency Care Centre (UECC) at New Cross Hospital in Wolverhampton opened on time at 4am on Wednesday 25 November 2015. Stemko Group were delighted to partner with main contractor Kier Construction Ltd to provide the many internal glazed timber screens required throughout the building, within time and budget. With a complex mixture of requirements in terms of fire ratings, acoustic ratings and privacy control, Kier could have complete Project Peace of Mind, knowing that Stemko Groups knowledgeable & dedicated team would ensure that all the requirements would be attended to and incorporated correctly within this supply and installation package.



Tel 0121 749 7099
Fax 0121 749 7365
Email mail@stemkogroup.com
www.stemkogroup.com
Reg. 10846756

Stemko Group Ltd
River House
143-145 Farringdon Road
London EC1R 3AB

Registered Address
Unit 16, Shaw Lane Industrial Estate
Ogden Road
Doncaster DN2 4SE