

NationPlus SD2

Security door



Door leaf

Thickness: 55mm

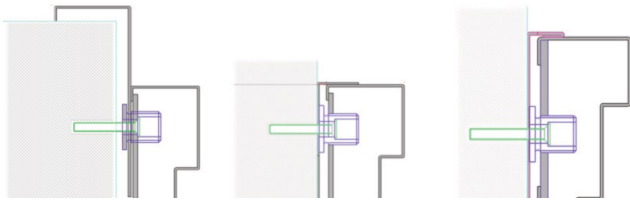
Material: 1.5mm corrosion resistant Zintec/Aluzinc sheets as standard, wide variety of colours and finishes available. Plus 1.2mm additional internal plate for 'means of escape' doors.

Infill: Filled with mineral wool and integral steel stiffeners.

Construction: Doorblade manufactured from two 1.5mm sheets lockformed together, by bonding two steel skins around a rigid core. A total steel armour thickness of 3 to 4mm.

Door frame

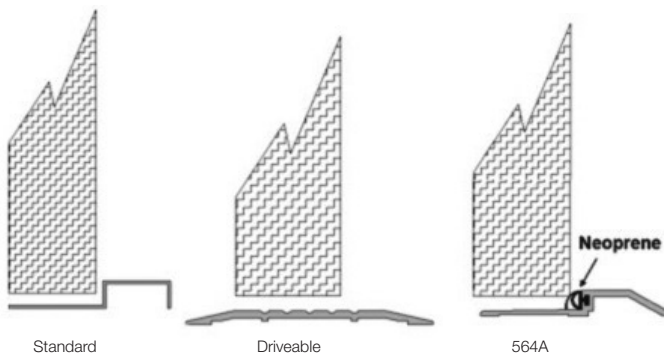
Construction: Folded from 1.6mm Zintec/Aluzinc. Screw and tab construction with 4 no. adjustable fixing feet per jamb, variable sub-frame supplied as standard to accommodate site of tolerance -0/+30mm. The frame is fitted with 4 no. dog-bolt hinges as standard.



Threshold

Standard: 15mm aluminium.

Optional: 5mm driveable (DDA compliant). rebated.



Finishes

Standard: Polyester Powder Coated from standard colour range.

Optional: Polyester Powder Coated from non-standard colour range.

Unfinished for site finishing.



Thermal U-values

With in-fill as detailed a thermal value of 2.4W/m²K is obtainable.

Sizes

Doors are custom manufactured in 10mm increments for single openings 690mm to 1200mm and double openings 1290mm to 2500mm, at heights up to 2800mm.

Contact Stemko Group for special configurations and finishes.

Secure locking

Non-fire escape: Door is required to be fitted with a minimum of two high security locks.

Each door supplied with high security cylinders, tested to BS EN 1303 security Grade 6, Pattern protected to make key duplication difficult, anti-drill protected and keyed alike per door set as standard.

Please note to achieve the security rating the door should be fitted with 2 no. Security Deadlocks to offer the appropriate security rating when the building is unoccupied.



Fire escape doors: Alternatively, the doors can be fitted with 3 point heavy duty panic escape hardware to offer means of escape, which is accepted by the Secure by Design scheme.

Fire escape doors are fitted with a 1.2mm internal skin to resist drill attack.

Note: Taller doors may require a third, additional, lock.



Applications

Duty: Light Commercial and perimeter security.

Protection from a determined attack, with some preparation and a number of tools where the attacker is willing to make some, but not prolonged, noise.

Note: All duty recommendations assume the doors are used in conjunction with other comparable levels of security at windows etc.

The SD2 door can offer up to 240min. fire rating if fitted with appropriate ironmongery.

Testing and certification

Tests: These doors achieve a pass to the following:

PAS24 and STS202 (BR2). Both of which are accepted by Secure by Design. BS EN 1627 level 2.

Tests involve a determined attack over a period of 15mins. using tools including screwdriver, 300mm. lever, and hammer. (see 'Practical Attack Element of Test for full details')

When fitted with Vision Panels the door can only be offered to PAS24 rating.

The SD2 holds Secure by Design certification.

Double doors

Double doors to be fitted with flush bolts, exidor towerbolts or double panic bolts.