

NationPlus SD4

Security door



Door leaf

Thickness: 55mm

Material: 1.5mm corrosion resistant Zintec/Aluzinc sheets as standard, wide variety of colours and finishes available.

Infill: Solid timber cored with internal stainless steel anti-attack skin.

Construction: Doorblade manufactured from two 1.5mm sheets lockformed together, by bonding two steel skins around a rigid core. Additionally, fitted with a 1.5mm steel sheet to the internal face of outer skin. A total steel armour thickness of 4.5mm. Fitted with integral lock box.

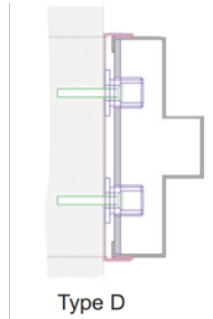
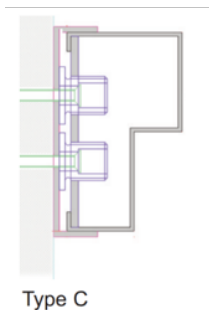
Astragal: Blade fitted with a flush anti-jemmy astragal.

Door frame

Construction: Folded and welded from 2mm Zintec/Aluzinc.

Specially modified, variable sub-frame supplied as standard to accommodate site tolerance of -0/+30mm.

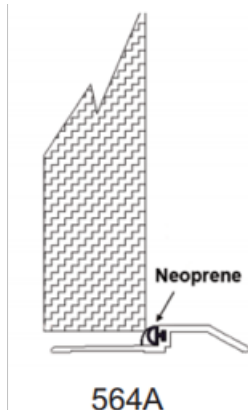
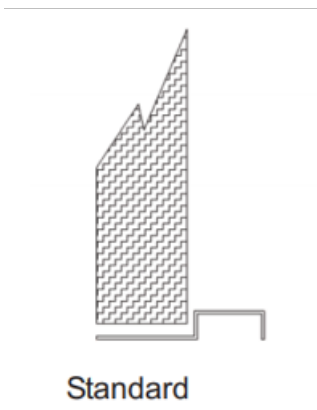
The sub-frame providing additional protection to the fixings against jemmys. Fitted with stainless steel dog bolted continuous hinge for additional security.



Threshold

Standard: 15mm rebated threshold.

Optional: 12.5mm 564A aluminium (DDA compliant).



Finishes

Standard: Polyester Powder Coated from standard colour range.

Optional: Polyester Powder Coated from non-standard colour range.
Unfinished for site finishing.

Thermal U-values

With in-fill as detailed a thermal value of 2.9W/m²K is obtainable.

Secure locking

A centre High Security WAAA1100 Sashlock combined with two similar Deadlocks in the upper and lower quarters of the door. All locks fitted with anti-jemmy escutcheon and welded shroud. Locks are anti-drill and pattern protected to reduce risk of key copying. Mico and Surelock can also be used. Doors are fitted with Exidor tower bolts.

Alternatively, high security multi-point heavy duty panic hardware for fire escapes.

Acoustic values

With infill as detailed an acoustic value of 23dB is achievable.

Applications

Duty: Heavy duty and vulnerable properties, probably with a prior record of attempts at forced entry.

Protection from experienced attempts at forced entry of commercial properties with no regard for noise.

Further the door is suitable for protection against attempted entry by explosive blasts.

Note: All duty recommendations assume the doors are used in conjunction with other comparable levels of security at windows, etc.

Testing and certification

Security: Tested to BS 1627 level 4

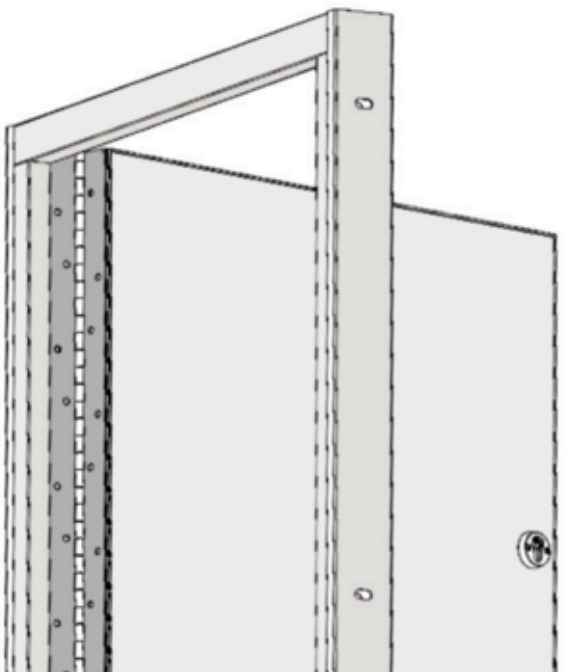
The test involves a determined attack over a period of 30mins. using a selection of hand and battery tools including club hammer, cordless drill, cold chisel and axe.

Locks Anti-drill tested to BS EN 1303 Security Grade 6.

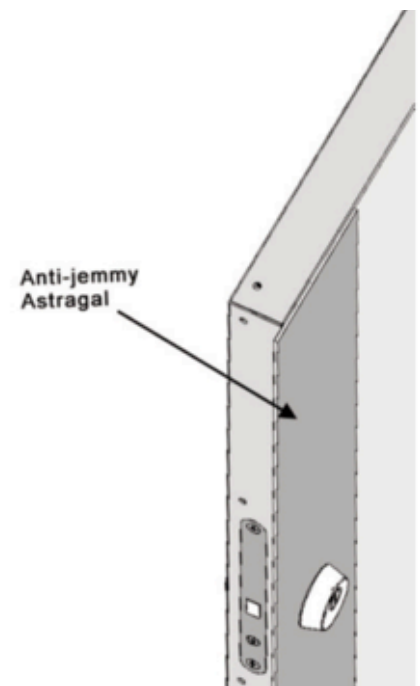
Blast: SD4 doors have been tested and passed EXR2 of BS EN 13124-2, Explosion.

Resistance standard, with explosive blasts using plastic explosives.

Individual specifications may vary.



SD4 Full Height Continuous Hinge



SD4 Anti-Jemmy Astragal