

# ROUND WOOD

*of Mayfield*

TIMBER PRODUCTS

Spring 2018



## Get in touch!

Round Wood of Mayfield  
Newick Lane  
Mayfield  
East Sussex  
England  
TN20 6RG

Our opening hours:  
8am-5pm, Monday to Friday  
8.30am-12.30pm Saturdays

Please note that we have several warehouses, so always call before visiting to ensure we have the required stock to hand.

## Find Us!



Telephone  
01435 867 072

[www.roundwood.com](http://www.roundwood.com)  
[sales@roundwood.com](mailto:sales@roundwood.com)

# ROUND WOOD

*of Mayfield*

Welcome to the first edition of our handy timber product brochure. This will be revised and published frequently, so always be sure that you have requested the latest version from us.

As you will see, we deal almost exclusively in hardwoods given their durability and eye-catching qualities. Some softwoods do make the grade, but only when suitable for high end applications.

Our decking includes Oak, Ipe and Balau, hardwoods from around the world that can last a lifetime and look great all the while. Having been appointed as a distributor for the Thermory® range, we now also offer Thermo Treated pine and ash boards. These are accompanied by an attractive selection of cladding materials, complete with innovative fastening systems.

The engineered and solid flooring boards we supply are available only in high grade European Oak and American Black Walnut.

The majority of our joinery items are also oak, although idigbo and softwoods are available.

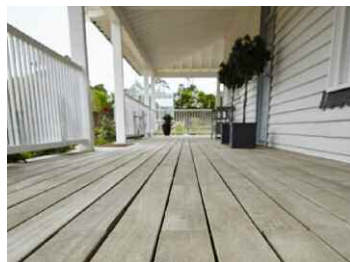
Our timber products range also includes oak skirting, architrave, beams, sleepers and a range of ancillary products including oils, glues and fixings.

Other strands of our business offer oak framed buildings (including garage kits) and home and garden features.



## CONTENTS

P4-11 .....	Decking
P12-13 .....	Cladding
P14-19 .....	Flooring
P20-23 .....	Joinery
P24 .....	Skirting
P25 .....	Sleepers
P26 .....	Oak Framed Garages





# ROUND WOOD

*of Mayfield*

## Ipe Decking



Section	Profile	m <sup>2</sup> price	lm price	Lengths
90x19mm	Smooth	£48.50	£4.61	2 - 6m
140x19mm	Smooth	£45.59	£6.61	< 2.16m
140x19mm	Smooth	£52.49	£7.61	2.4 - 4.28m
140x19mm	Smooth	£59.38	£8.61	4.4m+

This extremely dense South American timber is arguably the toughest available for the production of decking boards and is a world apart from cheaper softwood equivalents. Ipe can provide 100 years of use, even without treatment, truly giving you a deck for life. It is also one of the most attractive decking timbers on the market given its grain swirl and highly sought-after colour variation.

## Balau Decking



Section	Profile	m <sup>2</sup> price	lm price	Lengths
90x19mm	Reeded	£32.00	£3.04	2 - 5m
145x21mm	Reeded/Smooth	£39.50	£5.93	2 - 5m
145x21mm	Smooth	£36.50	£5.48	2 - 5m
145x21mm	Grooved/Smooth	£39.50	£5.93	2 - 5m

Balau is a hardwood native to Asia where, given its durability, it is widely used within the construction industry. Over recent years it has significantly increased in popularity in both Europe and America as a decking product, with high end customers appreciating not just the durability it offers, but also its eye-catching look. It features light to mid browns and sandy red/oranges that particularly stand out when wet. Like all timbers, if left to weather naturally, Balau gentles down to a welcoming silver.





# ROUND WOOD

of Mayfield

## Oak Decking



Section	Profile	m <sup>2</sup> price	1m price	Lengths
130x28mm	Smooth	£36.26	£4.90	2.5 - 3.5m
145x28mm	Smooth	£40.95	£6.14	2.5 - 3.5m
145x22mm	Smooth	£40.95	£6.14	3 - 4m

**NB: 28mm boards are pre-finished with WOCA oil.**

Oak hardwood decking blends beautifully into any English garden, particularly when complementing traditional buildings, such as the oak frames we supply. Unlike softwood decking it will also provide years of service given the density achieved through its slow growing process.

## Fitting Accessories

Box 100 Stainless Steel Decking Screws	£8.00
100 x Extreme4 Hidden Fastenings (for Ipe and Balau)	£50.00
185 x Extreme4 Hidden Fastenings (for Ipe and Balau)	£90.00
Hardwood Wrench - Straightening Tool	£195.00
Grooving for hidden fastenings (per linear metre)	50p



Other decking species available:  
Siberian Larch | Radiata Pine | Cedar

We also supply matching balustrade components and fence panels.







# ROUND WOOD

of Mayfield

## Thermory® Decking - Ash



Section	Profile	m <sup>2</sup> price	1m price	Lengths
118x21mm	D45J	£55.69	£6.85	1.8 - 2.1m
118x21mm	D45J	£61.50	£7.56	2.7 - 3m
118x21mm	D45J	£69.16	£8.51	3.3 - 6m
115x26mm	D34	£76.25	£9.15	3m

**NB: Different profiles require specific fixings.**

Thermory® only use high quality ash for these decking boards, harvested from well-managed forests in North-America where good growing conditions and strict drying standards are maintained. This range has been subjected to their 'intense' thermo-treatment', which heats and steams materials up to a maximum temperature of 215°C, ensuring maximum stability and a dark, rich colour throughout the timber.



## Thermory® Fitting Accessories



### Clip Strip for fitting D45J boards

6 clips per strip (8 strips per m<sup>2</sup>) £1.55 per strip



### Teni Clip for fitting D34 boards

Supplied as individual clips £0.36 each



# ROUND WOOD

of Mayfield

## Thermory® Decking - Pine



Section	Profile	m <sup>2</sup> price	1m price	Lengths
118x26mm	D45J	£29.91	£3.68	2-4.2m
118x26mm	D34	£22.67	£2.72	4.5-4.8m

*NB: Different profiles require specific fixings (shown on page 9)*

The pine used by Thermory® is sourced from responsibly managed spruce forests in Finland & Russia. Thermo treatment is a chemical free process that adds dimensional stability and resistance to fungal attacks. The end result is the transformation of an eco-friendly, fast growing softwood into a decking material with outstanding durability credentials.



## Thermory® Thermo Wood Oil

This oil is specifically designed to delay the inevitable weathering process that occurs with all natural timber products.



- Water based blend of natural oils
- Delays weathering process
- Designed for use with thermo-treated timber
- Coverage: Approx. 30/m<sup>2</sup> tub (2 coats recommended)
- Quick drying
- Available in dark pigment or natural finish

2.5 litre tub    £50.00





# ROUND WOOD

of Mayfield

## Thermory® Cladding - Ash

As with their decking, Thermory® cladding is cut from high quality ash sourced from responsibly managed forests. Thermo treated ash cladding offers a dark, luxurious and contemporary finish along with outstanding durability. It is also supplied with innovative fastening systems, saving on site time.



Section	Lengths	Profile	Price
155x20mm	2.1m	C6	£8.12/1m
155x20mm	2.4m	C6	£8.57/1m
155x20mm	2.7m	C6	£9.10/1m
132x20mm	2.4m	C6	£5.05/1m
132x20mm	3m	C6	£9.53/1m
52x20mm	1.5-3m	C7J	£2.77/1m
52x20mm	3.3m	C7J	£2.96/1m

**NB: Different profiles require specific fixings.**

## Thermory® Cladding - Pine



Section	Lengths	Profile	Price
138x20mm	3.9m	C6	£5.05/1m
65x20mm	4.5m	C7J	£2.99/1m
52x26mm	2.7m	C4J	£4.41/1m

**NB: Different profiles require specific fixings.**

Thermo treated pine cladding offers a lighter appearance than ash, but still possesses that high-end contemporary appearance. Courtesy of the chemical free thermo treatment process, it is also durable and represents excellent value for money.

## Thermory® Cladding Fitting Accessories

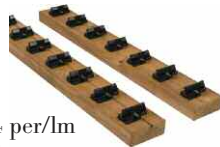
**B1-1 Hidden Clip**  
Use with C6 profile

Allows for 4mm spacing  
£0.30 each



**Cladding Substructure**  
Use with C7J profiles

CLAD52 (For Ash C7J & C4J) £8.54 per/1m  
CLAD65 (For Pine C7J) £6.98 per/1m





# ROUND WOOD

*of Mayfield*

## Engineered Flooring – Pre Oiled

Our engineered flooring boards should not be confused with far inferior laminates. They consist of a cross bonded backing for added stability and a thick wear layer of oak or walnut, making them indistinguishable from solid boards once fitted. Although originally innovated for use with under floor heating, engineered boards are now specified for a wide variety of high end projects as they are simple to fit and maintain.

### Pre-Oiled Engineered Boards

These boards have been pre-finished with a coat of hard wax oil, saving you both time and fitting costs. We recommend that once laid an additional layer of protection is added using Treatex Hard Wax Oil, which will also help seal the joints.

Section	Lengths	Wear layer	m <sup>2</sup> price	Pack size
189x15mm	1.86m	4mm	£34.50	2.11/m <sup>2</sup>
189x21mm	1.86m	6mm	£39.55	1.41/m <sup>2</sup>
220x15mm	1.9m	4mm	£35.00	2.51/m <sup>2</sup>
220x21mm	1.9m	6mm	£42.50	1.67/m <sup>2</sup>
260x21mm	2.2m	6mm	£49.00	2.29/m <sup>2</sup>
300x21mm	2.2m	6mm	£49.50	2.64/m <sup>2</sup>

### Unfinished Engineered Boards

Unfinished engineered boards are ideal if you wish to add your own unique touch to your floor with specialist oils, stains or lacquers. We offer our own range of hard wax oils by Treatex, available in a range of tints.

Section	Lengths	Wear layer	m <sup>2</sup> price	Pack size
189x15mm	1.86m	4mm	£29.50	2.11/m <sup>2</sup>
189x21mm	1.86m	6mm	£37.75	1.41/m <sup>2</sup>
220x15mm	1.9m	4mm	£33.50	2.508/m <sup>2</sup>
260x21mm	1.9m	6mm	£42.50	1.976/m <sup>2</sup>

# ROUND WOOD

## *of Mayfield*

### Handscraped Engineered Boards

If you are looking for an aged finish, you may want to consider our selection of handscraped engineered Oak flooring. Each board has been hand distressed to achieve a slightly rippled, worn profile. These boards come pre-finished with two coats of hard wax oil.



Section	Lengths	Wear layer	m <sup>2</sup> price	Pack size
189x21mm Oiled	1.9m	6mm	£41.85	1.44/m <sup>2</sup>
220x15mm Unfinished	1.9m	4mm	£38.25	2.508/m <sup>2</sup>
220x15mm Oiled	1.9m	4mm	£40.50	2.508/m <sup>2</sup>
260x21mm Unfinished	1.86m	6mm	£44.50	1.98/m <sup>2</sup>
260x21mm Oiled	1.9m	6mm	£48.85	1.98/m <sup>2</sup>

### Walnut Engineered Boards

Walnut flooring is ideal for those looking to achieve a luxurious finish. Whilst Walnut has always been regularly specified for high-end projects, it is increasingly demanded in the retail market now that its dark colouring and striking grain can be offered in an engineered flooring board, with all the stability benefits this brings. This range has been pre-finished with two coats of hard wax oil.

Section	Lengths	Wear layer	m <sup>2</sup> price	Pack size
189x15mm	1.9m	4mm	£41.50	2.15/m <sup>2</sup>
189x21mm	1.9m	6mm	£55.00	1.44/m <sup>2</sup>

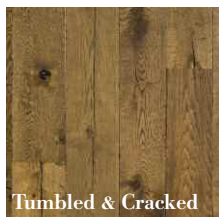




# ROUND WOOD

*of Mayfield*

## New Range - Bespoke Engineered Oak Flooring



Tumbled & Cracked

We are in the process of introducing a new, high-end range of engineered oak flooring. The boards in our 'Bespoke' collection offer distinctive character, with the majority being hand finished in the UK. The flooring is manufactured to order and can include matching fitting accessories, such as thresholds. A finish/colour matching service is also available for specific projects.

### Tumbled & Cracked

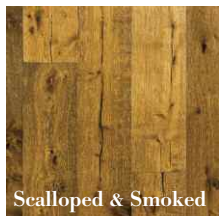
Section	Lengths	Wear layer	m <sup>2</sup> price	Pack size
220mm x 21mm	2.2m	6mm	£82.50	1.936/m <sup>2</sup>
190mm x 21mm	2.2m	6mm	£76.50	1.672/m <sup>2</sup>



Smoked Amber

### Smoked Amber

Section	Lengths	Wear layer	m <sup>2</sup> price	Pack size
160mm x 21mm	2.2m	6mm	£70.50	1.408/m <sup>2</sup>
190mm x 21mm	2.2m	6mm	£70.50	1.672/m <sup>2</sup>
220mm x 21mm	2.2m	6mm	£76.50	1.936/m <sup>2</sup>
260mm x 21mm	2.2m	6mm	£85.50	2.29/m <sup>2</sup>



Scalloped & Smoked

### Scalloped & Smoked

Section	Lengths	Wear layer	m <sup>2</sup> price	Pack size
220mm x 21mm	2.2m	6mm	£82.50	1.936/m <sup>2</sup>

## Solid Flooring – Oak

One for the traditionalists still seeking solid boards! Our solid oak flooring, cut by our own team on site, features an angled groove suitable for secret nailing. Boards are available in either prime, rustic or character grade kiln dried oak and supplied unfinished.

Section	Grade	m <sup>2</sup> price
205x22mm	Rustic	£36.30
205x22mm	Character	£44.00
205x22mm	Prime	£51.70



# ROUND WOOD

*of Mayfield*

## Thermory® Flooring



In addition to thermo-treated decking and cladding, the Thermory® collection includes a number of timber products suitable for internal use. This includes thermo-treated ash flooring, which we currently offer in 150mm and 190mm wide boards. It is far more stable than its solid counterparts, is easy to fit and has a rich, dark colour throughout.

Section	Lengths	m <sup>2</sup> price
190x18mm	Random lengths, (0.5m-2.4m)	£51.46
150x21mm	Random lengths, (0.5m-2.4m)	£56.50



# ROUND WOOD

*of Mayfield*

## Engineered Flooring - Accessories

### Treatex Hardwax Oil

Give your hardwood floor the level of care it deserves with our range of products from Treatex. We recommend their hard-wax oil for finishing both our engineered and solid boards as it is durable, water repellent and available in a range of tints. Hard wax oil can also be used to protect skirting, architrave and interior joinery.

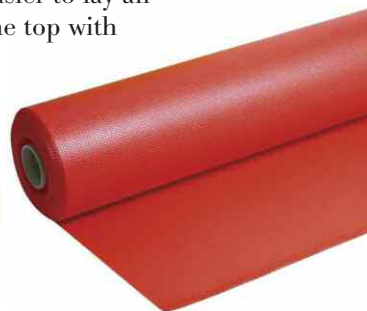


Size	Finish	Price
0.5 Litre	Clear Matt or Clear Satin	£12.99
1 Litre	Available in a range of different finishes	from £22.02
2.5 Litre	Available in a range of different finishes	from £53.60
10 Litre	Clear Matt or Clear Satin	£209.11

### Underlay

Our underlay products have been designed specifically for use with engineered wood flooring. Underlay can provide a moisture barrier, offer noise reduction and, if you have underfloor heating, act as a conductor/insulator - allowing you to cut heating bills and reduce your energy usage. Underlay also makes it easier to lay an engineered floor, as the boards can be floated directly over the top with no requirement for nailing or bonding.

Underlay	Thickness	Roll size	Price
Quick Therm Underlay	1.8m	1m x 10m	£37.50
Timbertech Original Xtra Underlay	3.0m	1m x 10m	£30.00







# ROUND WOOD

*of Mayfield*

## Solid Oak Internal Doors

We offer a selection of standard designs of assembled internal oak doors. All are traditionally crafted from 20mm thick character grade oak board and are screwed and plugged for better stability. Our standard size is 762 x 1981mm, but this can be modified within reason to suit your requirements. Doors supplied unfinished unless otherwise specified.

### Cottage Door - £195

Random width boards

6mm beading to front

Small V-Joint on rear

Also available as a door kit - £155



Cottage Door



Farmhouse Door

### Farmhouse Door - £230

Fixed width boards, (typically between 4-6)

16mm beading to front

Small V-Joint on rear

Also available as a door kit - £195

### Antique Style Door - £290

Fixed width boards

Hand planed, distressed finish

Dark Oak stain

Rose head nails to front



Antique Style Door



Swept Head Door

### Swept Head Door - £315

Curved swept head

False styles, rails & cover strips

Small V-Joint on rear

# ROUND WOOD

*of Mayfield*

## External Oak Doors

Our standard range also includes external framed ledged and braced, stable and garage doors. All are hand crafted from character grade oak using traditional mortise and tenon joints. Our external swept head door is a favourite amongst country property owners with its arched top rail and oak cover strips fitted to the boards. All supplied unfinished. Glazed panels can be fitted as an optional extra if required.

### Framed, Ledged & Braced Door - £595

Mortise & tenon joints

Standard dimensions: 838 x 1981mm

Thickness: 44mm

V-Jointed boards



Framed, Ledged & Braced Door

### Stable Door - £695

Framed, Ledged, & Braced

Mortise & tenon joints

Standard dimensions: 838mm x 1981mm

Thickness: 44mm

V-Jointed boards

### External Swept Head Door - £825

Arched top rail

Jointed Muntins

Mortise & tenon joints

Standard dimensions: 838 x 1981mm

Thickness: 45mm



External Swept Head Door

### External Door Frame - £295

Complete Frame

Cut from ex 100mm x 75mm solid oak

Ex 150mm x 50mm sill

Overall size: 900mm (W) x 2100mm (H)

# ROUND WOOD

*of Mayfield*

## Garage Doors



Our standard garage doors are constructed using vertical tongue and grooved boards, with ledges and braces fitted to the rear for stability. A framed model is also available. All are constructed using mortise and tenon joints.

- Framed ledged and braced
- To suit structural opening size: 2.575m (W) x 2.1m (H)
- Bespoke sizes can be catered for
- Thickness: 53mm
- Unfinished
- Stops & Cover Fillet

### Available in the following timbers

Oak - £1600

Idigbo - £1250

Softwood - £850

Ironmongery Packs - £250

## Bespoke Joinery

We also supply bespoke joinery, including windows, door linings and door stops. All timbers available.



# ROUND WOOD

*of Mayfield*

## Oak Skirting

Whilst our oak skirting boards look great with the solid and engineered flooring we supply, they can also be used to compliment other floor types, including carpet. The lengths of skirting board we can offer vary according to the stock of oak we have available, but typically range between 2 and 4m. A wide variety of both style and height of profiles are available. Boards are supplied unfinished, allowing you to match your existing aesthetic.

Height	Price
65mm x 18mm	£4.20 per/lm
90mm x 18mm	£6.00 per/lm
110mm x 18mm	£7.20 per/lm
130mm x 18mm	£8.40 per/lm
150mm x 18mm	£9.60 per/lm
170mm x 18mm	£10.80 per/lm
190mm x 18mm	£12.00 per/lm



Torus



Ovolo



Pencil  
Round



PAR



Bull  
Nose



Chamfered



Ogee



Bevelled



# ROUND WOOD

*of Mayfield*

## Sleepers

### Oak Sleepers

Our oak sleepers are rough cut from European Oak, so may feature many edges and bark. As garden grade sleepers, they will typically feature at least two good edges. The sleepers arrive to us fresh sawn, but may partially season before despatch. As the beams continue to dry, they may develop some shake and splits.

Section	Length	Price
200 x 100mm	1.8m	£17.50
200 x 100mm	2.4m	£23.50
200 x 100mm	2.6m	£25.50
200 x 100mm	3m	£29.50
220 x 130mm	1.8m	£21.00
220 x 130mm	2.6m	£29.50



### Softwood Sleepers



Section	Length	Price
190 x 95mm	2.4m	£16.00

### Other Timbers

We hold large stocks of green & partially air-dried oak. Please contact us with details of your requirements for beam prices.

### Sleeper Staple Pins



Size	Dimensions	Price
Small	200 x 120mm	£1.70
Large	420 x 130mm	£3.40

Large pins suited to corner pieces.

Please call for bulk pricing (Pack/Arctic)

# ROUND WOOD

*of Mayfield*

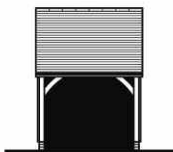
## Oak Framed Garages

Did you know that in addition to bespoke frames, our oak framed building division supplies kit garages and a range of framing accessories. Just contact us for a brochure pack.

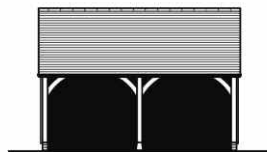


### Kit Garage Examples

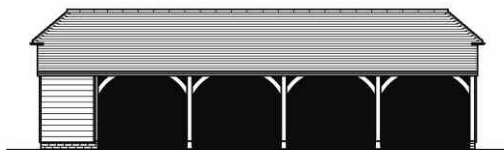
CH1G  
£2,395.00



CH2G  
£3,495.00



CH45B  
£7,915.00



## Oak Framing Accessories / Shingles / Weatherboard

### Staddle Stones

Size	Straight	Tapered
125mm	£27.50	£30.00
150mm	£30.00	£37.50
175mm	£39.50	£55.00
200mm	£49.00	£69.50
250mm	£75.00	£99.50
300mm	£105.00	£152.50

Granite - Available in all sizes

Sandstone - Available in 125mm to 200mm



### Braces and Peg Wood

Standard Braces - 610 x 610 x 50mm	£35
Tie Beam Braces - 615 x 912 x 75mm	£50
Octagonal Peg Wood (18mm)	£3/lm



### Shingles and Nails

Blue Label Cedar Shingles	£62.50/bundle
Red Label Cedar Shingles	£47.50/bundle
Oak Shingles	£294/pallet
Cedar Ridge Tiles	£55/bundle
Stainless Steel Nails	from £8.95/kg



### Weatherboard

Oak Square Edge / Featheredge	£4.25/lm
Softwood Featheredge	£2.30/lm

Other species and profiles  
available on request

### Bricks - £1.75

We hold large stocks of extra wide bricks, designed specifically to fit flush to a 150mm wide soleplate.  
150mm x 215mm x 65mm (Width x Length x Height)

[www.roundwood.com](http://www.roundwood.com)

Tel: 01435 867 072

Round Wood | Newick Lane | Mayfield | East Sussex | TN20 6RG