

Centriforce recycled plastic profiles



Suggested fixing instructions

Centriforce is the UK's leading manufacturer of recycled plastic profiles. The material is carefully made in the UK from post industrial and post consumer waste plastic which can create a degree of variability which is normal for the product. However, the material can be worked in the same way as normal timber and the following guidance may be helpful in obtaining optimum results from the material.

Working with the material

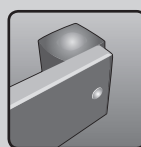


Centriforce recycled plastic profiles can be worked using similar equipment to traditional wood. It can be sawed, and drilled using typical wood working tools or machinery with good results. Circular saws and band saws work well with the profiles, but slower speeds are normally recommended to avoid friction heating and melting. Similarly wood and even metal drills can be utilised, but again slower speeds are suggested.



In fixing the profile to itself or other structures, it is advisable to condition for around 24 hours at ambient temperatures. Where possible, keep the profiles covered in their delivery packaging until use and try to fix at or near its maximum operating temperature.

Best results can be achieved by:



For outside applications, use stainless steel coach bolts and round headed screws if possible. Further details are available on request.



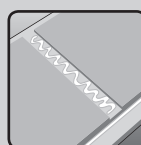
Pre drill holes before installation and oversize any holes by a minimum of 2mm in relation to the size of the fixings.



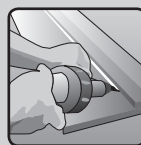
Avoid countersunk screws if possible and do not over tighten. Allow some room for expansion.



Do not use nails to fix profiles.



We do not normally recommend gluing, but there are some adhesive systems that are claimed to work well. Contact Centriforce for more information.



Finally, profiles are weldable, but will require the use of specialised machinery and equipment. Contact Centriforce for more information.

NOTE: We draw your attention to the manufacturing tolerances for profiles and particularly note that profiles are made from HDPE which can expand up to 2.1mm per linear metre for every 10 degrees increase in temperature. Allowances should be made for this during fabrication and assembly.

Users must establish for themselves that the material is suitable for their intended application. No liability will be accepted for loss or injury from its use for unspecified purpose. Our policy is one of continuous improvement and development. We reserve the right to modify the specification without notice at any time.