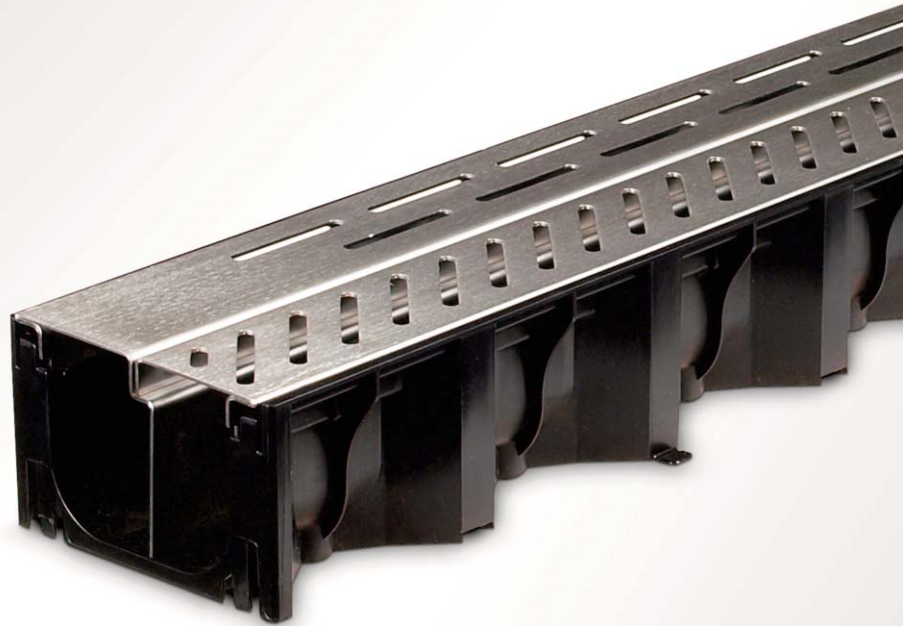


Uniclass L7315	EPIC J3413
Cl/SfB (52.5)	

ACO Water Management: Building + Landscape

ACO DoorWay Drain

- ✓ Provides level threshold drainage to eliminate the risk of water ponding at house entrances
- ✓ Easy and quick to install
- ✓ Heelguard™ stainless steel brushed finish gratings suitable for pedestrian traffic
- ✓ Compliant with Part M (England and Wales) and Section 4 (Scotland) Building Regulations
- ✓ CE marked and fully certified to Load Class A 15 BS EN 1433:2002



ACO DoorWay Drain

Unobtrusive high quality domestic threshold drainage

Manufactured from recycled polypropylene, ACO DoorWay Drain eliminates water ponding at house entrances.

ACO DoorWay Drain comes complete with a two piece, corrosion resistant, Heelguard™ grating, suitable for pedestrian traffic.

The high quality channels clip together for quick and easy installation.

The system is compliant with Part M of the Building Regulations for England and Wales and Section 4 of the Scottish Building Standards.

Typical applications

- ▶ Threshold drainage

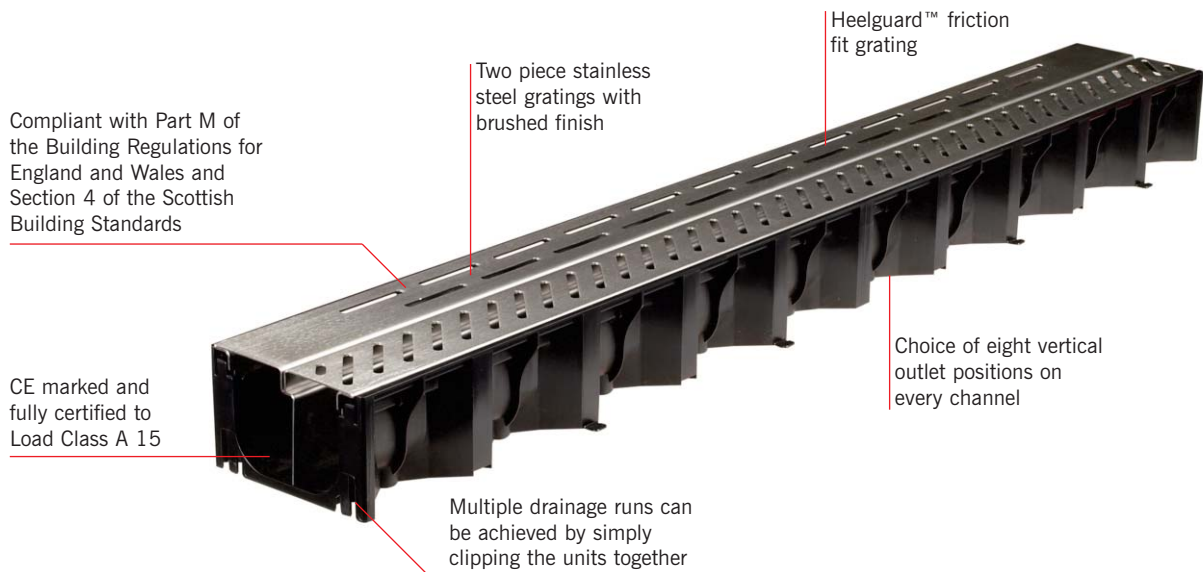
ACO DoorWay Drain

System Overview



Pedestrian, cycleways and domestic drives.

Features



PACK CONTENTS

- ▶ 1m ACO DoorWay Drain unit with removable two piece stainless steel gratings (channel width 125mm)
- ▶ 2 x End Caps
- ▶ 1 x Ø110mm Vertical Outlet Connector
- ▶ Installation instructions



ACO DoorWay Drain channel assembly

Product code	Description	Length (mm)	Width overall (mm)	Depth overall (mm)	Invert (mm)	Invert type	Weight (kg)
40015	ACO DoorWay Drain	1012	125	80	75	1	4.0

ACO DOORWAY DRAIN INSTALLATION



Dig trench 175mm wide by 130mm deep for channel. If draining to a soakaway, remove cut outs in end caps and fit to channel or, if connecting to underground pipework, knockout a preformed outlet at the required position in the base of the channel unit and fit the outlet connector.

Lay 50mm (min.) bed of concrete or mortar. Position the channel and fit to U-PVC Ø110mm pipework if required.

With gratings fitted haunch around channel with concrete or suitable fill material.

Protective film on gratings should now be removed. Complete the installation by sealing between the door sill and grating.

Full installation details are provided with the ACO DoorWay Drain pack. Alternatively please visit www.aco.co.uk.

ACO Technologies plc

ACO Business Park, Hitchin Road, Shefford, Bedfordshire SG17 5TE

Tel: 01462 816666 Fax: 01462 815895

e-mail: technologies@aco.co.uk website: www.aco.co.uk