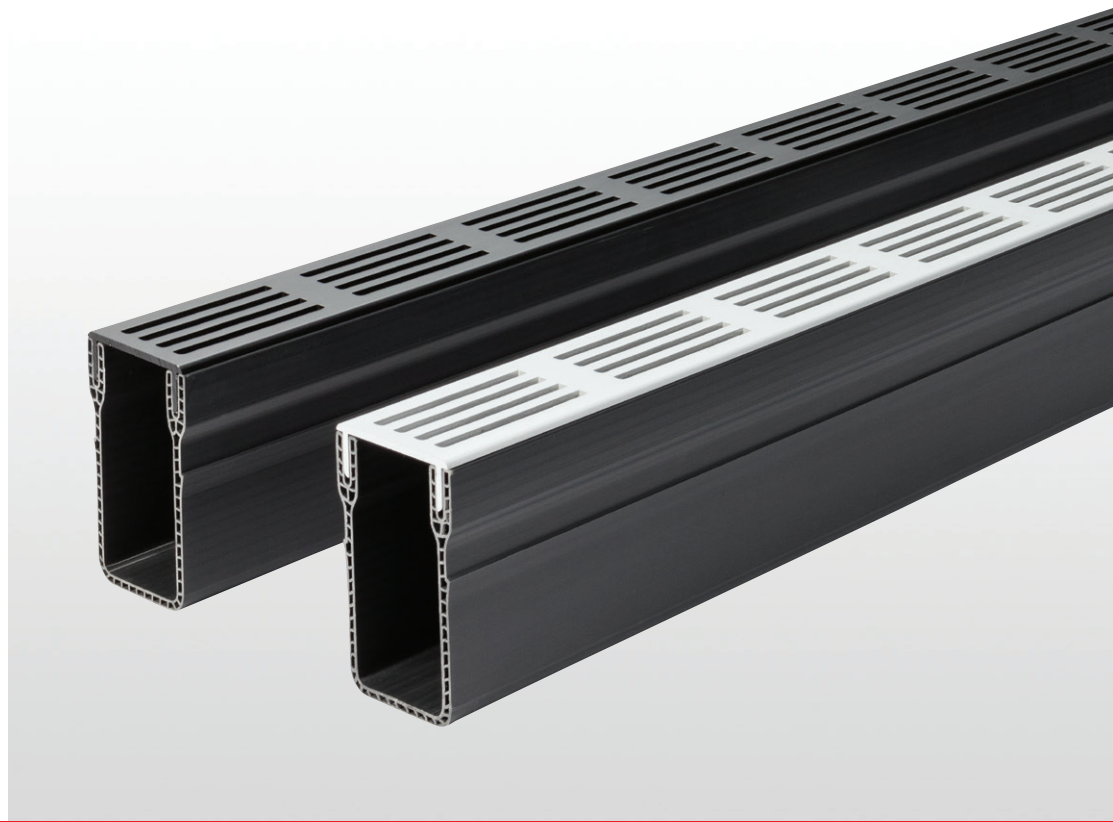


Uniclass L7315	EPIC J3413
CI/SfB (52.5)	

ACO Water Management: Building + Landscape

ACO Threshold Drain

- ✓ High quality extruded plastic channel and aluminium gratings, reduces water ponding at house entrances
- ✓ The discreet system has a width of 60mm and is available with silver or black Heelguard gratings
- ✓ System is compliant with Part M of the Building Regulations for England and Wales and Section 4 of the Scottish Building Standards
- ✓ Suitable for level thresholds and residential developments



ACO Threshold Drain

Slimline domestic level threshold door drainage

Manufactured from extruded plastic and aluminum, ACO Threshold Drain eliminates water ponding at house entrances.

ACO Threshold Drain comes complete with either a silver or black aluminum Heelguard grating, suitable for pedestrian traffic. Easy to install, the system can be connected to domestic soakaways via Ø80mm pipe.

The discreet channel has a width of 60mm and is available in 1m lengths. The system is compliant with Part M of the Building Regulations for England and Wales and Section 4 of the Scottish Building Standards.

Applications

- ▶ Level Thresholds
- ▶ Residential developments



ACO Threshold Drain

System Overview



Level thresholds and residential developments

Features

Compliant with Part M of the Building Regulations for England and Wales and Section 4 of the Scottish Building Standards

Removable Heelguard™ grating manufactured from aluminium

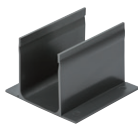
The system can be connected to domestic soakaways via Ø80mm pipe



CE marked and fully certified to load class A 15 BS EN 1433:2002

Body of unit manufactured from extruded plastic

ACO THRESHOLD DRAIN ACCESSORIES



Drain connector



Ø80mm bottom outlet



Closing end cap

ACO Threshold Drain

Product code	Description	Length (mm)	Width (mm)	Depth (mm)	Invert (mm)	Weight (kg)
19000	ACO Threshold Drain w/ silver aluminum grating	1000	61	100	93	1.63
19005	ACO Threshold Drain w/ black aluminum grating	1000	61	100	93	1.63

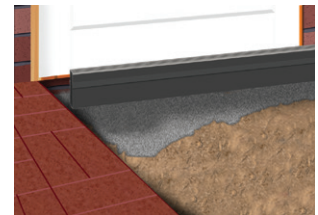
ACO Threshold Drain Accessories

Product code	Description	Length (mm)	Width (mm)	Depth (mm)	Invert (mm)	Weight (kg)
19001	Bottom connector	100	100	70	N/A	0.11
19002	Bottom outlet Ø80mm	100	61	70	N/A	0.12
19004	Closing end cap	20	61	100	N/A	0.03

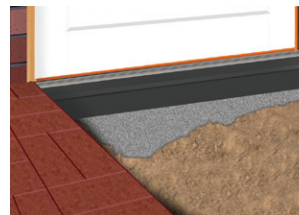
ACO THRESHOLD DRAIN INSTALLATION



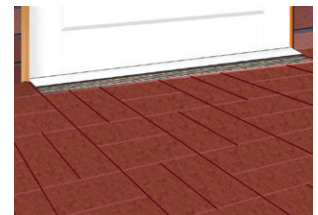
Dig trench 110mm wide by 156mm deep for channel.



Lay 50mm (min.) bed of concrete or mortar. Position the channel and fit to Ø110mm pipework, use a suitable adaptor coupling.



Haunch around channel with concrete or suitable fill material.



Complete the installation by sealing between the door sill and grating.

ACO Technologies plc

ACO Business Park, Hitchin Road, Shefford, Bedfordshire SG17 5TE
 Tel: 01462 816666 Fax: 01462 815895
 e-mail: technologies@aco.co.uk website: www.aco.co.uk

