



ACO. creating

the future of drainage

ACO RainDrain®

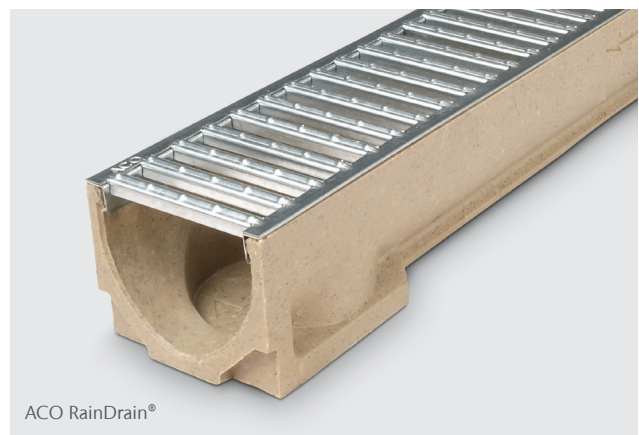
Polymer concrete domestic drainage channel.

Manufactured from Vienite®, ACO's high-strength recycled polymer concrete material, the ACO RainDrain® is designed to provide surface water drainage for a range of domestic applications. Its lightweight 1m channel design makes it quick and easy to install.

The range of elegant and modern 'Complete the Look' gratings provides choice and style to complement driveway and patio projects. A choice of eight gratings are available.

Benefits

- Clip locking grating for secure installation
- Channel design improves flow velocity and promotes self-cleaning
- Manufactured from Vienite®, ACO's high strength sustainable polymer concrete
- Full range of accessories for a professional installation
- CE marked and fully certified to Load Class A 15 BE EN 1433:2002



Applications

- Garage thresholds
- Patios and paths
- Pedestrian precincts
- Block paving

ACO RainDrain System Overview



CE marked and fully certified to Load Class A 15 BS EN 1433:2002.

Choice of 'Complete the Look' gratings suitable for domestic applications

Clip-locking grating for secure and simple installation

Lightweight design for easy handling and installation

Knock-out for connection to Ø110mm PVC-U pipe

Channel shape anchors product into concrete round

Channels interlock for quick and simple on-site fabrication

Manufactured from recycled material

Sealant groove for simple watertight installation

VIENITE THE SUSTAINABLE CHOICE

Try our selector to see how your patio or driveway might look with our grating range. www.aco.co.uk/completethelook

COMPLETE THE LOOK

Product Code	Description	Length [mm]	Width [mm]	Depth [mm]	Invert [mm]	Weight [kg]
ACO RainDrain®						
47000	Channel with galvanised steel grating 1m	1000	118	97	87	7.38
ACO RainDrain® Accessories						
38703	Sump with galvanised steel grating c/w silt bucket	500	118	303	275	11.3
47011	NEW! Corner Unit with galvanised steel grating and vertical outlet	120	135	156	60	0.47
319288	Closing end cap	6	129	97	-	0.03
319289	Outlet end cap Ø110mm	-	129	135	-	0.07
01684	Horizontal foul air-trap	100	Ø110	-	-	0.20
0056	820 Drain union PVC-U Ø110mm	100	Ø110	-	-	0.10
1367	Lifting tool 5mm slots	-	-	-	-	0.20
2618	Socket plug UPVC Ø110mm	110	110	42	-	0.12



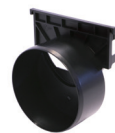
Sump unit with silt bucket



Corner unit with galvanised steel grating



Closing end cap



Ø110mm outlet end cap



Ø110mm horizontal foul air-trap



Ø110mm drain union

ACO RainDrain® Installation



Dig trench 318mm wide (218mm wide if against a structure) by 200mm deep for channel (400mm deep for sump). Mark finishing height with fixed line 3mm below final surface. Lay 100mm (min.) bed of concrete.



Knock out pre-formed outlet from the inside (marked with hammer symbol) or fit sump or outlet endcap. Position sump or outlet channel on concrete bed, fit PVC-U union/trap to drainage pipework.



Lay channels starting from outlet/sump, ensuring joints connect by lowering units horizontally. Fit endcap to end channel. For fully watertight joints, use a suitable sealant (contact ACO for further advice).



With gratings fitted, haunch around channels/sumps with concrete (suitable fill material). Final surface to be 3mm above grating. Bricks/paviours should be laid in mortar for lateral stability.

ACO Water Management Contacts:

Sales: customersupport@aco.co.uk

Technical: technical@aco.co.uk

Tel: 01462 816666

www.aco.co.uk

ACO. creating the future of drainage

