

# BENCHMARK





# BENCHMARK



## *Sage Sofa*

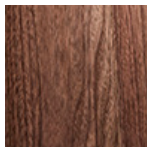
DAVID ROCKWELL

Materials: Solid Oak / Solid Walnut  
Upholstery: Natural Wool / COM  
Variations: Low Back / High Back  
Finishes: Oak Whitenened Oil / Walnut Clear Oil

### FINISHES



Oak Whitenened Oil



Walnut Clear Oil

### DIMENSIONS

2 Seat	1600 × 750 × 753	mm
3 Seat	2100 × 750 × 753	mm
Seat Height	450	mm

### ADDITIONAL INFORMATION

The Sage Collection has a specific focus on human health and wellbeing. Made with natural sustainable and non-toxic materials, it meets the standards required for WELL certified buildings.

We use 100% natural non-toxic fillings - coir, latex and sheep's wool. We can upholster in customers own fabric and recomend using a naturally fire-retardant wool which will meet fire regulations without the need for toxic fire-retardant chemicals.

### MAINTENANCE

The Sage Collection is finished in a natural, low VOC hard wax polyx oil. This protects from stains and spillages whilst keeping the timber looking and feeling as natural as possible. Simply wipe with a damp cloth.

