

BENCHMARK



BENCHMARK



Sage Coffee Table

DAVID ROCKWELL

Materials: Solid Sycamore / Solid Oak / Solid Walnut
Frame: Solid Sycamore / Solid Oak / Solid Walnut / Solid Ash
Finishes: Sycamore Whitened Oil / Ash Grey Tinted Oil / Oak Whitened Oil / Walnut Clear Oil

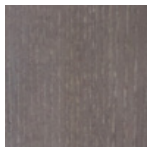
DIMENSIONS

Medium 1200 × 500 × 340 mm
Large 1400 × 600 × 340 mm

FINISHES



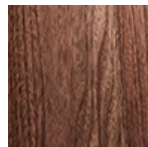
Sycamore
Whitened Oil



Ash Grey Tinted Oil



Oak Whitened Oil



Walnut Clear Oil

ADDITIONAL INFORMATION

The Sage Collection has a specific focus on human health and wellbeing. Made with natural sustainable and non-toxic materials, it meets the standards required for WELL certified buildings.

MAINTENANCE

The Sage Collection is finished in a natural, low VOC hard wax polyx oil. This protects from stains and spillages whilst keeping the timber looking and feeling as natural as possible. Simply wipe with a damp cloth.

