

# BENCHMARK



# BENCHMARK



## *Sage High Huddle Table*

DAVID ROCKWELL

Materials: Solid Sycamore / Solid Oak / Solid Walnut  
Frame: Solid Oak / Solid Walnut / Solid Ash  
Finishes: Sycamore Whitened Oil / Ash Grey Tinted Oil / Oak Whitened Oil / Walnut Clear Oil

### DIMENSIONS

dia1500 × 1070 mm

### ADDITIONAL INFORMATION

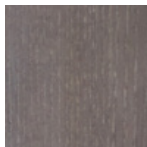
The Sage Collection has a specific focus on human health and wellbeing. Made with natural sustainable and non-toxic materials, it meets the standards required for WELL certified buildings.

We offer integrated power and data in various configurations.

### FINISHES



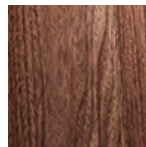
Sycamore  
Whitened Oil



Ash Grey Tinted Oil



Oak Whitened Oil



Walnut Clear Oil

### MAINTENANCE

The Sage Collection is finished in a natural, low VOC hard wax polyx oil. This protects from stains and spillages whilst keeping the timber looking and feeling as natural as possible. Simply wipe with a damp cloth.

