

BENCHMARK



BENCHMARK



Sage Meeting Table

DAVID ROCKWELL

Materials: Solid Sycamore / Solid Oak / Solid Walnut
Frame: Solid Oak / Solid Walnut / Solid Ash
Variations: Round / Oblong / Rectangular / Sit-Stand
Finishes: Sycamore Whitenened Oil / Ash Grey Tinted Oil / Oak Whitenened Oil / Walnut Clear Oil

DIMENSIONS

Round dia1200/1500 × 750 mm
Oblong 2000/2400 × 1000 × 750 mm
Rectangular 2000/2400 × 1000 × 750 mm

ADDITIONAL INFORMATION

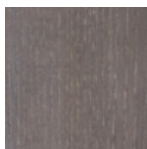
The Sage Collection has a specific focus on human health and wellbeing. Made with natural sustainable and non-toxic materials, it meets the standards required for WELL certified buildings.

We offer integrated power and data in various configurations.

FINISHES



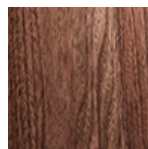
Sycamore Whitenened Oil



Ash Grey Tinted Oil



Oak Whitenened Oil



Walnut Clear Oil

MAINTENANCE

The Sage Collection is finished in a natural, low VOC hard wax polyx oil. This protects from stains and spillages whilst keeping the timber looking and feeling as natural as possible. Simply wipe with a damp cloth.

