

# BENCHMARK



# BENCHMARK



## *Sage Sit-Stand Meeting Table*

**DAVID ROCKWELL**

Materials: Solid Sycamore / Solid Oak / Solid Walnut  
Frame: Solid Oak / Solid Walnut / Solid Ash  
Riser: Grey / Black  
Finishes: Sycamore Whitened Oil / Ash Grey Tinted Oil /  
Oak Whitened Oil / Walnut Clear Oil  
Options: Integrated power and data

### DIMENSIONS

2400 × 1200 × 720 - 1220 mm

### ADDITIONAL INFORMATION

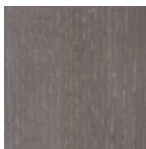
The Sage Collection has a specific focus on human health and wellbeing. Made with natural sustainable and non-toxic materials, it meets the standards required for WELL certified buildings.

The Sage Meeting Table transforms from seating to standing at the touch of a button. We offer integrated power and data in various configurations.

### FINISHES



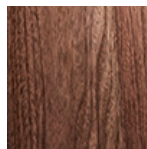
Sycamore  
Whitened Oil



Ash Grey Tinted Oil



Oak Whitened Oil



Walnut Clear Oil

### MAINTENANCE

The Sage Collection is finished in a natural, low VOC hard wax polyx oil. This protects from stains and spillages whilst keeping the timber looking and feeling as natural as possible. Simply wipe with a damp cloth.

