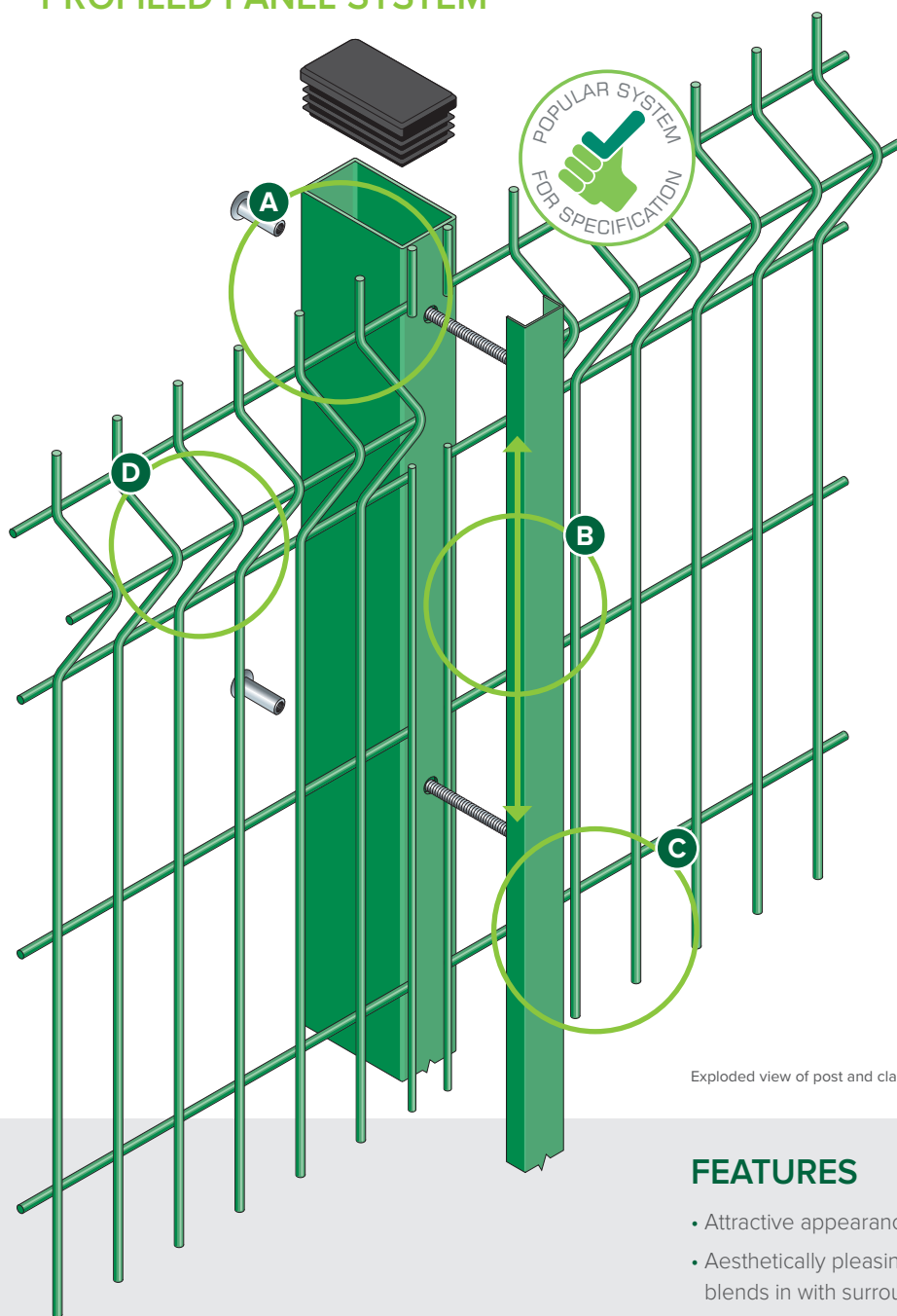


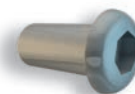
# EXEMPLA™

## PROFILED PANEL SYSTEM



- A** Galvanised and polyester powder coated RHS post
- B** Full length clamp bar for secure fixing and infinitely variable panel stepping within post length
- C** Unique 'SafeTfix' hidden fixing system
- D** Profiled for extra strength

SafeTfix™



n55Plus

Exploded view of post and clamp for Exempla panel system

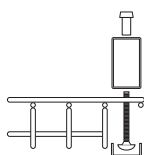
### FEATURES

- Attractive appearance
- Aesthetically pleasing, effortlessly blends in with surroundings
- Wide range of height options
- Full range of RAL colours available

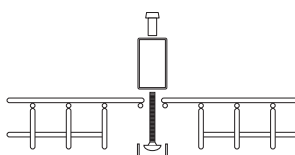
### SUITABLE FOR

- Public buildings
- Schools
- Car parks
- Business parks and retail premises

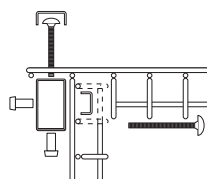
### SYSTEM DETAILS



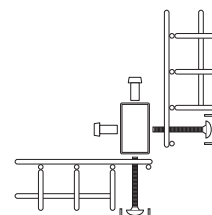
Plan of end



Plan of panels in line

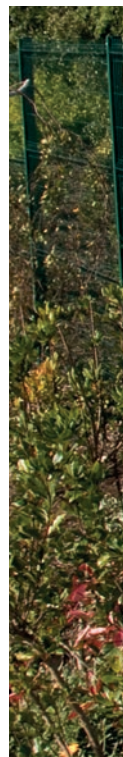


Plan of internal corner



Plan of external corner

CALL 01270 764751 OR VISIT [WWW.CLD-FENCING.COM](http://WWW.CLD-FENCING.COM)





## DESCRIPTION

When you need high quality multi-purpose fencing, the ever popular Exempla™ profiled panel system offers not only an aesthetically pleasing fencing solution, but also provides a robust first line of defence for public buildings, schools, car parks and retail premises.

Designed for quick and simple installation, Exempla™ features profiled rigid mesh panels securely fastened to 60 x40mm RHS steel posts and held in place our unique hidden fixing system, SafeTfix™; making it effortlessly easy to step panels up or down a slope.

Profiled for extra strength, panels are manufactured from 5mm galvanised steel wires which are welded at each cross over point. Finished in with polyester powder coating in either normal or marine grade you can be confident your fencing is well protected from the elements.

Available in a full spectrum of RAL colours, plus in a wide range of heights up to 3m, we can tailor-make Exempla™ fencing to fit your project perfectly.

### FINISH

Galvanised and polyester powder-coated, after stringent cleaning and treatment, to give a well adhered coating of a minimum of 60 microns. The full RAL range of colours available.

## PANEL DIMENSIONS

<b>Heights</b>	630, 830, 1030, 1230, 1530, 1730, 1930, 2330, 2530, 2730, 3030mm
<b>Panel width</b>	2485mm
<b>Mesh size</b>	200 x 55mm
<b>Wire diameter</b>	5mm
<b>Triangular folds</b>	2, 3, 4 or 5
<b>Top edge projection</b>	30mm*

\* Can be inverted to give flush edge.

All dimensions are nominal

## EXEMPLA POSTS AND CLAMPS

For the Exempla profiled panel system, CLD offers a standard post and clamp system which provides a complete method of securing, allowing infinitely variable stepping of panels. It is versatile, strong, simple to fix and vandal-resistant, yet allows panels to be removed without damage to either post or clamp. Accidentally damaged panels can be replaced without removing the post.

### SLOPING GROUND

Panels can be stepped as required. Where gradients exceed 1:16, it is recommended that taller panels are either part-buried or additional posts are used.



### VARIATIONS

In addition to the standard posts many variations are available to accommodate site requirements:

- Alternative sections
- Wall fixing plates, cranked posts or base plated
- Cranked or straight extensions for barbed or razor wire
- Cranked panels



### DIMENSIONS

<b>Posts</b>	60 x 40mm RHS (up to 2730mm) 80 x 40mm RHS (3030mm)
<b>Clamping channels</b>	41 x 21mm
<b>Post centres</b>	2495mm