

<b>Description of product</b>	<b>AquaRoute® Temp</b> is an acrylic water based paint for temporary road markings or track markings. Suitable for pneumatic and airless spray application, as well as manual application by roll, draw-box, etc.	
<b>Area of application</b>	It was properly developed for events like city runs, marathons and exhibitions – wherever a short-term marking is needed! <b>AquaRoute® Temp</b> is worn down fast by wear from traffic and weathering. The lifetime of the markings are within 1 - 4 weeks depending on the thickness of the line, place of application and general wear and tear from traffic and weather. Also, <b>AquaRoute® Temp</b> can be removed by high pressure water jet blasting.	
	<b>AquaRoute® Temp</b> consists of 2 parts: base and colour paste. The base (25.2 kg / 14 LTR) is available in two different versions: <b>AquaRoute® Temp-Base white</b> <b>AquaRoute® Temp-Base unpigmented</b> The combination of colour pastes with the white version leads to pastel tones (no confusion with RAL-tones), whereas with the unpigmented version powerful colour tones are obtained.	
	<b>AquaRoute® Temp-Paste</b> (0.75 kg / 0.73 LTR) is available in different colours: <b>AquaRoute® Temp-Paste Blue</b> <b>AquaRoute® Temp-Paste Red</b> <b>AquaRoute® Temp-Paste Yellow</b> <b>AquaRoute® Temp-Paste Green</b> <b>AquaRoute® Temp-Paste Orange</b> <b>AquaRoute® Temp-Paste Black</b> More colour tones available on request. <b>AquaRoute® Temp-Pastes</b> are miscible with each other, individual colours can be created. Usually 1 can of <b>AquaRoute® Temp-Paste</b> should be mixed homogeneously with 1 bucket <b>AquaRoute® Temp-Base</b> .	
<b>Technical characteristics</b>		
Chemical composition	Waterborne 1-component acrylic paint; aqueous organic pigment-paste, stabilised.	
	<b>Base</b>	<b>Paste</b>
Colour	Unpigmented	different colour tones available
Density	1.80 ± 0.04 kg/l (basic)	1.03 ± 0.04 kg/l (paste)
Solid Content	72.5 % ± 2.0%	8.0 % ± 1.0 %
Viscosity (Cup Ø 6 mm, EN 2431)	20 – 45 s	6 – 12 s
VOC-content	None (according to VOC-guideline 2004/42/EG)	
Additional information	See MSDS.	
<b>Application note</b>		
Start-up / mixing ratio	Before starting works the paint (basic) has to be mixed with the paste thoroughly. By weight: 100 : 3 equivalent to 25 Kg paint + 0.75 Kg pigment paste By volume: 18.5 : 1 equivalent to 14 LTR paint + 0.73 LTR pigment paste	
Surface preparation	For bitumen surfaces. The surface has to be dry, clean and adhesive. It has to be free of dust, oil or other contamination.	
Application conditions	Air temperature:	> 12 °C
	Pavement temperature:	+ 10°C to 50°C
	Air humidity:	up to 75 % H rel.
Airless equipment	Recommend nozzle type:	0.019 – 0.023 inches      Angle ≤ 40
	Recommend filter	60 mesh
	Note: Dry paint chips are not soluble in water!	
Wet film thickness	<b>Maximal 250 µm</b> <b>Higher wet film thickness will increase the drying time significantly!</b>	

Consumption  
 (all tones)

Approximate: 0.45 Kg/m<sup>2</sup>      0.25 LTR/m<sup>2</sup>

**Consumption for a line (wet film thickness 250 µm) with a length of 1000 meter**

Width	Quantity
8 cm	20.0 LTR = 36.0 Kg
10 cm	25.0 LTR = 45.0 Kg
12 cm	30.0 LTR = 54.0 Kg
15 cm	37.5 LTR = 67.5 Kg

Drying Time

250 µm:      30 min.

Rain resistance

250 µm:      40 min. after drying time

(without mechanical load)

**Storage**

6 months after delivery, when kept in the original packaging under proper storage conditions. Please notice that the material can show a tendency towards sedimentation during transport and storage. After having been stirred-up homogeneously, the material will be ready for use again. Skins of paint have to be removed completely. Never try to stir them up. Store in tightly closed original containers in a dry, well-ventilated room at temperatures between +5 °C and +30 °C (41 °F – 86 °F), not directly on the floor and not in the vicinity of heating radiators.

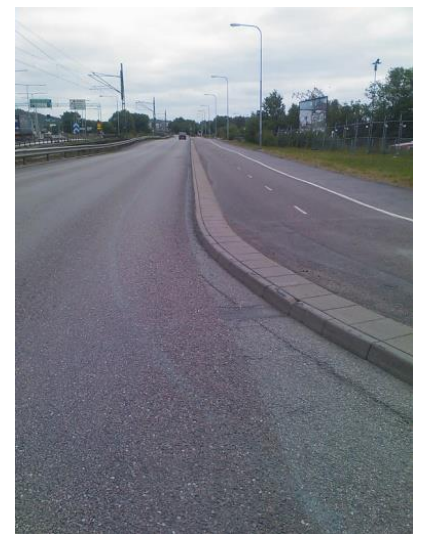
**Packaging**

Paint: Plastic bucket with 14.0 LTR = 25.2 Kg net.

Paste: Plastic can (screw cap) with 0.73 LTR = 0.75 Kg

**Removal**

High pressure water jet cleaner or pass over less 50.000 (depending on conditions). Marking should be wetted at least 1 min. for easy removal.



Pictures of a low traffic road in Goteborg/Sweden; Marathon 2010. From left to right: after 3, 6 and 30 days.  
 Colour tone: 1 can **AquaRoute® Temp-Paste Blue** in 1 bucket  
**AquaRoute® Temp-Base** with white pigment.

**Geveko Markings Germany GmbH**

Renkenrungsstraße 16  
 79379 Müllheim/Baden • Germany  
 Telefon : +49 7631 3687-0  
 Fax: +49 7631 368736

[Info@gevekomarkings.de](mailto:Info@gevekomarkings.de)  
[www.geveko-markings.com](http://www.geveko-markings.com)

This information was compiled to the best of our knowledge, based on lab tests and practical experience. Since the product is processed under conditions that are beyond our control, we can only guarantee the quality of the product. MSW The information provided here is not to be deemed a warranty as to quality. We reserve the right to modify the information within the scope of existing approvals.