

Flowresin
the resin flooring specialist

addagripTM
A member of the **TERRACO** group

The specialist in Designer floors

Houses / Shops / Offices





Seamless
living comfort





The finishing touch for your interior design

Warm tones versus a modern industrial look.

Traditional craftsmanship versus modern technology.

A modern interior versus a cosy family home.

These may seem total opposites but the seamless floor collection from Addagrip and Flowresin combines these two opposites to create a beautiful floor.

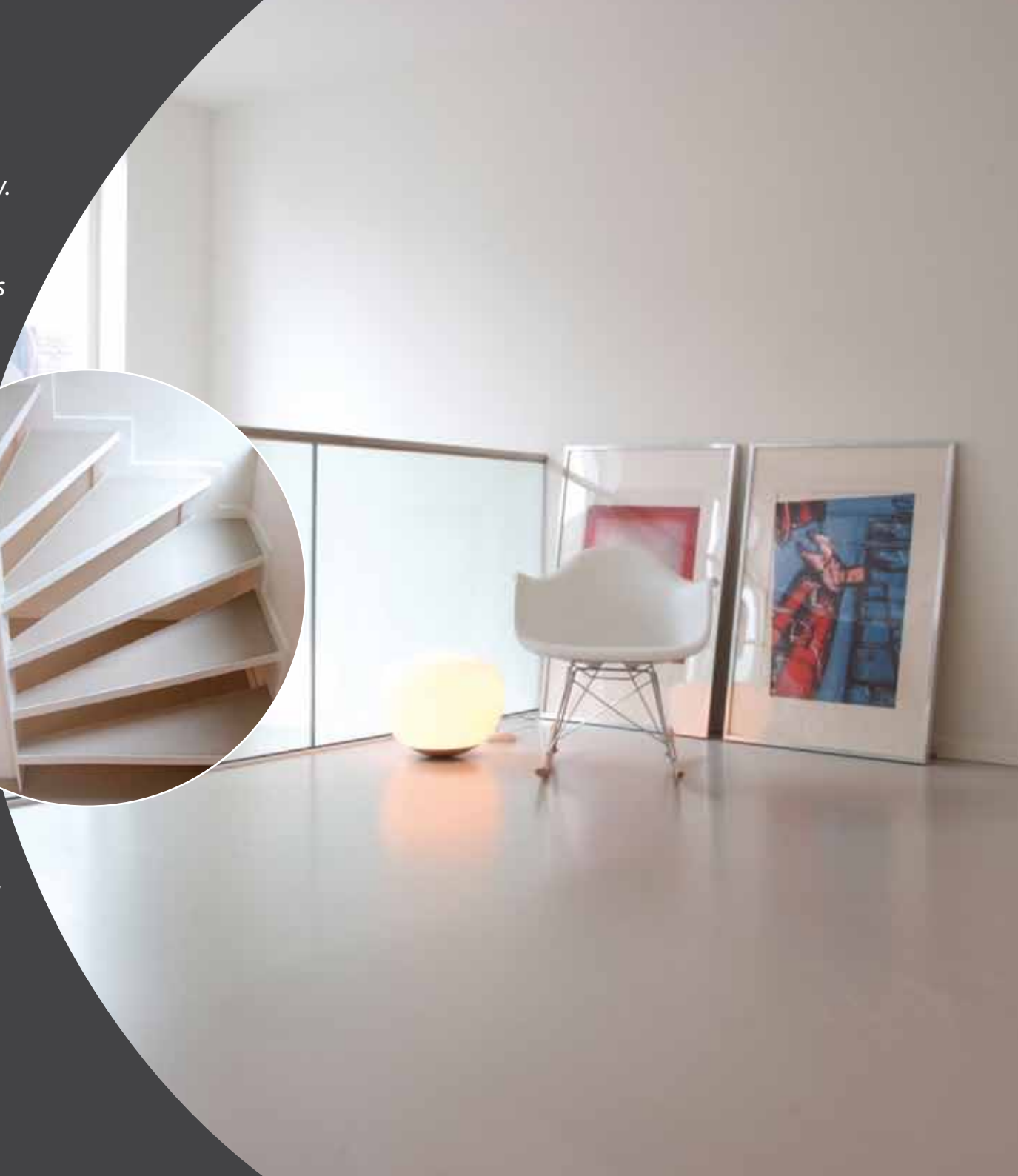
Are you looking for a unique, bespoke floor that complements your interior? Addagrip and Flowresin can tailor to your requirements.

Our seamless floors are very popular and there are good reasons for that. Our surfaces offer a wide spectrum of possibilities when you are focussing on the design and finishing touches. If you order a designer floor from Addagrip and Flowresin we are able to provide your interior with the look and feel that you desire.

Modern versus Hygienic

When you choose a designer floor from our seamless floor collection you will not need to vacuum again.

A quick daily swipe with a microfibre cloth is enough to keep your floor clean, removing dust and dirt in no time. You can simply use a bucket of clean water without the use of any detergents.







*Luxurious and
seamless appearance*



Top quality through experience

It's a difficult job to lay a seamless floor yourself, it has to be laid completely flat and smooth which requires specific knowledge and accuracy. The experts from Addagrip and Flowresin are very experienced in this type of work and have been fully trained to lay our floors. Because we work with the best materials to provide the best quality, you can rely on Addagrip and Flowresin to provide you with a beautiful new high quality floor.

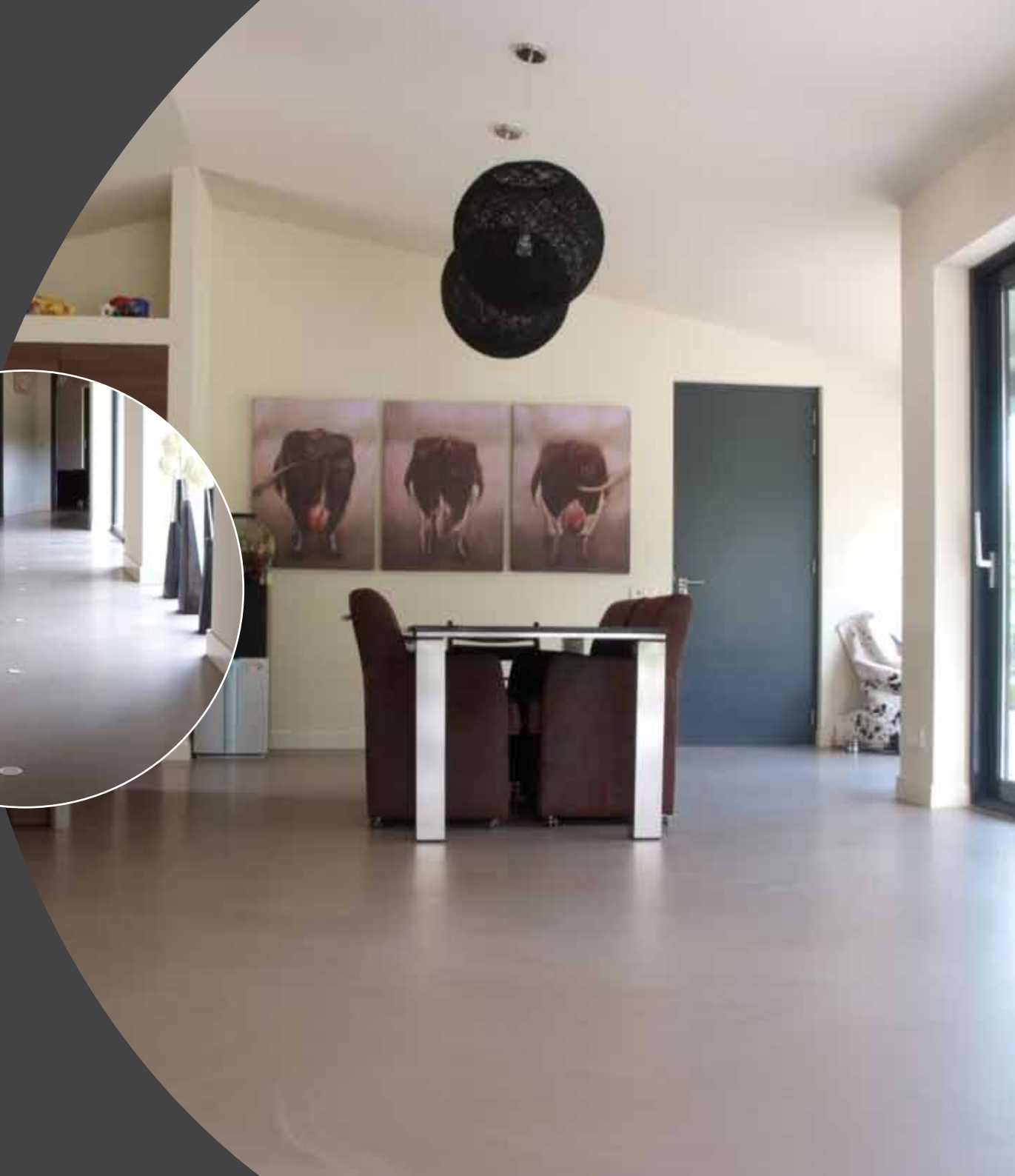
Durable in every way

The seamless floor collection from Addagrip and Flowresin is durable in every way. Our PU seamless floor Green Line is an environmentally friendly floor utilising a sustainable source resin in its formulation. The PU Green Line seamless floor is very resilient so it can last a lifetime!

Colours

The colours of your home are very carefully chosen and provide an insight into what you like and your living style. Why settle for a floor in any standard colour or colour combination?

The cast floor collection of Addagrip and Flowresin is available in virtually all RAL, Sikkens and NCS colours. We are at your service with our rich colours to provide the finish you desire. If your chosen colour is not listed please let us know and we will do our best to supply to the colour that you require.







Experience the quality
clean *seamless* appearance



What are the benefits of our resin cast floors

- ▶ To provide a suitable system for your application
- ▶ Improved elasticity
- ▶ Easy to maintain
- ▶ Strong and durable
- ▶ Good chemical resistance
- ▶ Seamless
- ▶ Suitable for underfloor heating

A resin cast floor can create a unique and very personal work of art

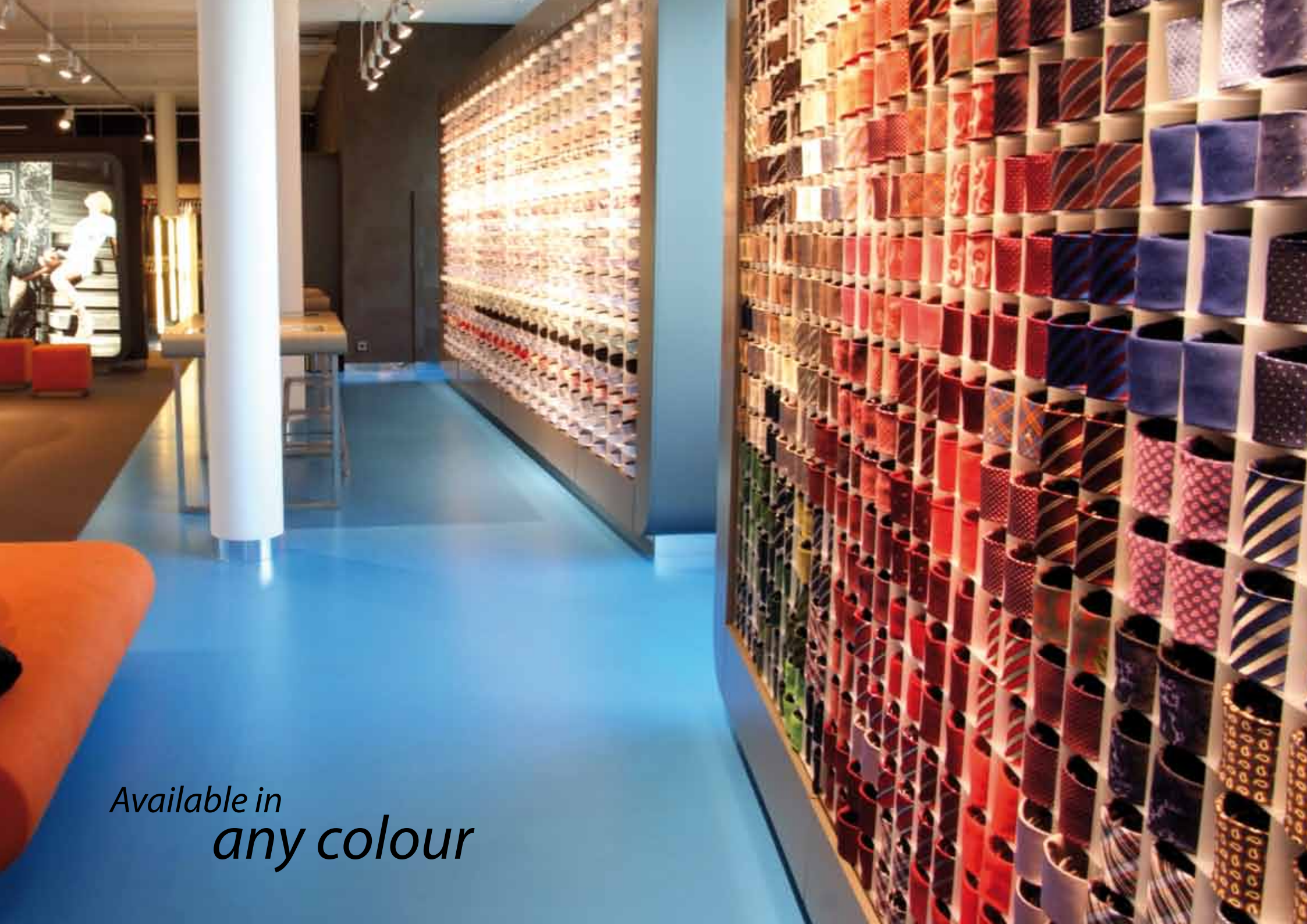
Addagrip and Flowresin collection of PU Floor Green Line floors is not only the foundation of your home but it also says something about your personality.

Resin cast floors can also be used in:

- ▶ Residential projects
- ▶ Shops
- ▶ Offices
- ▶ Catering premises
- ▶ Healthcare environments







Available in
any colour



Discover our Screed Collection

Want to find out what is possible in terms of floor screeds yourself?

Come and visit us at our showroom where our staff can provide a tour and detailed explanation of our resin screed collection. You can see with your own eyes and experience first-hand how beautiful, practical and comfortable our resin cast screeds are over a cup of coffee.

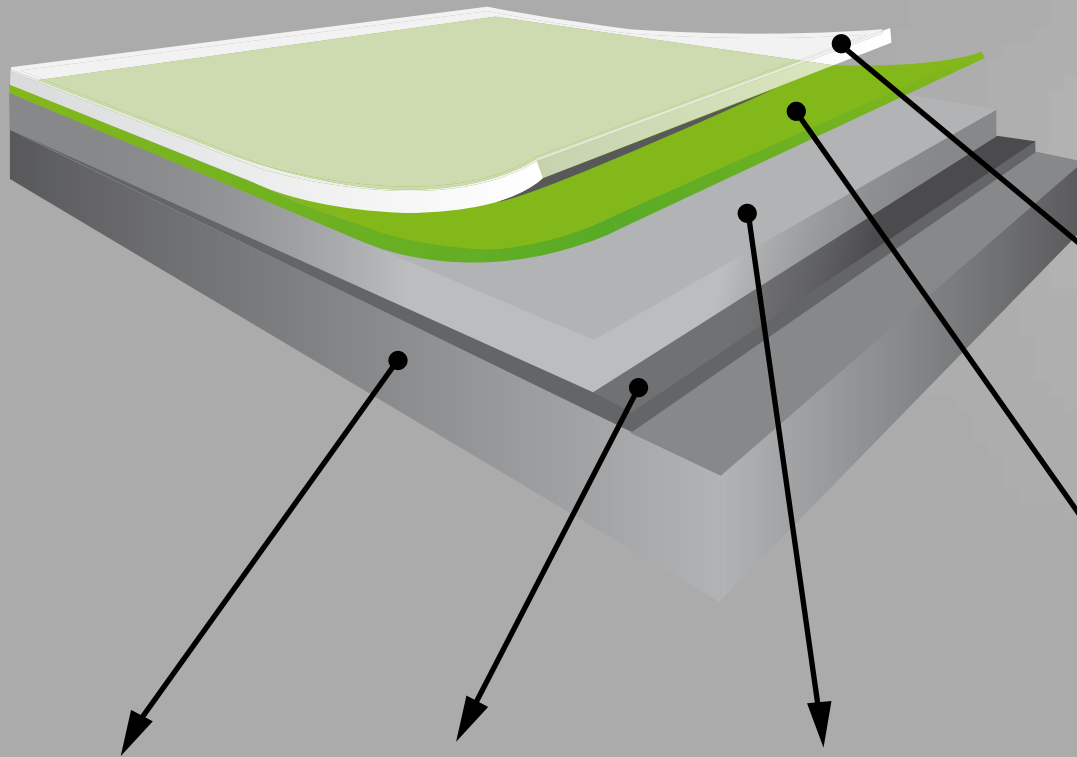
Ideal for any situation

The resin cast screeds are suitable for any room in the house, shop and office. Because our screeds have a sound absorption, they can also be installed in flats and apartment buildings. If necessary we can even make additional sound absorbing characteristics.

In short, Addagrip and Flowresin can always provide a floor to fit your situation.



PU Floor Green Line



Ground

Our screed can be used on virtually any surface

Primer

Apply EP Addaprime for optimum adhesion

Base

Apply PU Screed to level uneven surfaces

PU Floor Green Line

Apply PU Floor Green Line a 100% Polyurethane with high elasticity and colour pigmentation

UV Strong topcoating

Apply UV Strong top coats for high wear and optimum protection

PU Floor Green Line

PU FLOOR GREEN LINE

Definition

- ▶ A self-levelling two component polyurethane screed . The floor is soft providing a high living comfort floor.
- ▶ Applied thickness is about 3-4 mm

Product Features

- ▶ Improved elasticity
- ▶ Sustainable
- ▶ Seamless
- ▶ Does not feel cold
- ▶ Ideal in combination with underfloor heating
- ▶ Excellent abrasion resistance
- ▶ Good chemical resistance
- ▶ Maintenance friendly

Typical areas of application

- ▶ Living room, kitchen, bedroom, bathrooms and toilets
- ▶ Designer Stores
- ▶ Offices

Colours

- ▶ In many RAL and NCS colours

System Capabilities

- ▶ Available in single colours or colour combinations (Betonlook),
- ▶ Noise-reducing and non-slip.

We are happy to help

Come and visit our showroom which is open daily Monday to Friday. Book an appointment so we can take the time to show you all the available options and answer your questions. Alternatively contact our sales department where our team will be on hand to provide you with expert advice and technical assistance.

Showroom

Addagrip Terraco Limited
Bell Lane Industrial Estate
Uckfield
East Sussex
TN22 1QL

Telephone:

01825 - 761333

Email:

sales@addagrip.co.uk

Website:

www.addagrip.co.uk
www.flowresin.com



The specialist in Designer floors