

LET US CREATE YOUR

OUTSTANDING OUTDOOR SPACE



Over 55% of our business comes from existing customers. We must be doing something right!

A BIT ABOUT US...

Our expertise lies in taking your required outcomes and suggesting the best possible solution for your school or nursery and your budget.

Over 20 years specialising in school and nursery playground environments.

Award-winning range of equipment designed to support educational outcomes.

We're committed to continuous improvement – we're the only playground company to be actively measuring the impact of our projects on the children's health, wellbeing and academic success.

Nationwide team of experienced consultants, contracts managers and installers.

Not just a play company – as part of idverde, we can also arrange a whole range of outdoor services including grounds maintenance and a 24 hour help desk for any emergencies!

DID YOU KNOW?

We review our pricing regularly to benchmark it against similar options in the market to ensure we remain competitive.



DID YOU KNOW?

Our design team continually review and refresh our equipment portfolio to improve outcomes, renegotiate prices with suppliers and provide best value.

LET US CREATE YOUR

OUTSTANDING OUTDOOR SPACE...



WE ARE PASSIONATE ABOUT
CHILDREN'S HEALTH AND PARTNER
WITH EXPERTS WHO SHARE THIS PASSION...



Delivering the EYFS at Kalgarth Grange Day Nursery

Kalgarth Grange Day Nursery wanted a landscaped space that would support free flow play time as well as providing places for role play, sand and water play and natural play. Our Flow Wall and Bespoke Sand Pit offered lots of learning opportunities alongside our popular Mini-Beast Exploration Table and Mini-Beast Habitat, while the Woodland Bridge, EYFS Tipi and Woodland Cabin provide opportunities for imaginative play all year round.



THIS OUTDOOR SPACE FEATURES...

Hang-out Hut: the circular formation of the seating in this timber shelter encourages face-to-face interaction, as well as being ideal for storytelling and other group activities.



Free Standing Scales

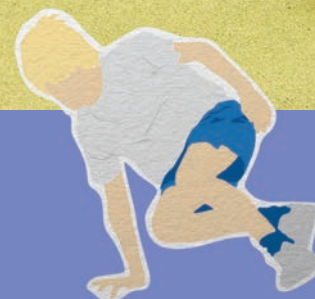
Tipi: the removable cover provides children with a fun den making space and a cosy area for small group play and stories.

Forest Scrambler: an early years version of our Woodland Climbers, great for physical and social development.





Playforce has a range of sports equipment including MUGAs, gym equipment, exercise stations, 'mile a day' and running tracks.



“FROM SPORTS AREAS TO IMAGINATIVE PLAY SPACES, WE WORKED WITH MISSION GROVE PRIMARY SCHOOL TO INSPIRE ALL CHILDREN TO BE MORE ACTIVE. THIS INCLUDED AN INSPIRATIONAL VISIT FROM GB PARALYMPIC FOOTBALLER ROY TURHAM, WHO OFFICIALLY OPENED THE NEW PLAY AREAS.”

A grand scheme at Mission Grove Primary School

Mission Grove Primary School had two objectives - to develop a Multi-Use Games Area for sports and activities for older children, as well as an engaging space where younger children could enjoy imaginative, discovery and role play activities, as well as storytime. Our Flow Wall, Freestanding Drawing Board, Mud Kitchen, Bubble Wash and Fuel Pump have been particularly popular!



THIS OUTDOOR SPACE FEATURES...



Post Mounted Flow Wall: a large mesh panel with components including hooks, chutes and tubes for exploring the effect of gravity on marbles or water.



Woodland Cabin With Porch: up to 6 children can happily play inside with room for a few more on the porch!



Log Forest Posts: with holes to allow for den building, weaving and hanging artwork.

Climbing to the top at GEMS Didcot Primary Academy

GEMS Didcot Primary Academy wanted to help their children learn to be resilient and creative, and to learn that challenge is a vital part of the learning process. We introduced a range of products designed to make active, curriculum-based learning much easier to integrate into the school day.



“THE EQUIPMENT IS OF REALLY HIGH QUALITY, AND THE INSTALLATION TEAMS HAVE BEEN FRIENDLY AND EFFICIENT.”
Alison Ashcroft, GEMS Didcot Primary Academy



White thermoplastic roadway with roundabouts and numbered parking bays.

THIS OUTDOOR SPACE FEATURES...



Woodland Climber 7: strikes a balance between encouraging physical development through climbing, balancing, swinging and stretching and social interactions between children as they navigate around the climber.



Tipi: the removable cover provides children with a fun den making space and cosy area for small group play and stories.



Hide and Climb Lodge: a ground floor den space and 3 different climbing/entry points. Complete with a large slide, platform and sloping roof.



Think you've got an unusable space? Chorley St James' Church of England Primary School thought so too...

When Chorley St. James' CofE Primary School decided to develop an internal area as an early years' space, we engaged with the whole team, to understand their vision, share ideas and to maximise the play opportunities possible in the space available.

Large Mud Kitchen Combined: sensory play with mud allows children to express their creativity while enhancing their fine motor skills.



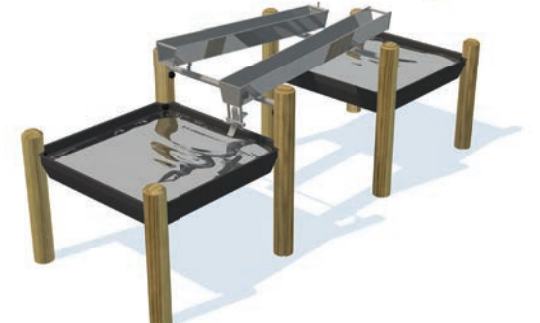
THIS OUTDOOR SPACE FEATURES...



Stack Store: a 2-tier, waterproof, lockable timber store with chalk board doors for keeping loose resources tidy and secure.



Timber Rectangular Shelter with Polycarbonate Roof: to enable the children to access the outdoor space year round.



Water Play Basins: encouraging team work and social interactions, as well as basic science and mathematics principles.



WE ARE HOLDING 'BIG QUESTION' EXPERIMENTS WITHIN OUR WOODLAND AREA TO TEACH PUPILS ABOUT LIFE CYCLES AND PLANT DEVELOPMENT.

Vicky Adams, Shevington Community Primary School



Helping Shevington Community Primary School connect with nature

Shevington Community Primary School wanted to encourage their students to share their environment with wildlife and to learn about nature. We worked with them to make a wooded area of the school grounds accessible, as well as adding in a den building area, walkways and Mini-Beast Exploration Table, so that the children can engage with their natural environment every day.



THIS OUTDOOR SPACE FEATURES...



Den Frame: provides a space where children can construct their own hideaway from loose materials (not included).

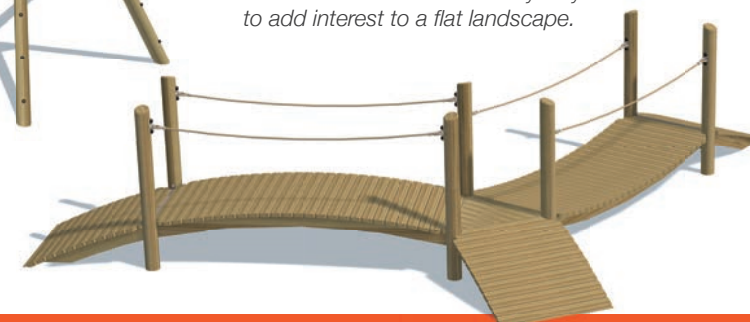


Mini-beast Exploration Table: includes three magnifying lenses and a rotating table top underneath which can hold 6 different samples.



Poddely: includes a colourful variety of cubes, prisms, interlocking tiles, chutes, light filters and other accessories to support learning outcomes across the curriculum for all age groups.

Rise and Fall Bridge: these curving timber boardwalks are a lovely way to add interest to a flat landscape.



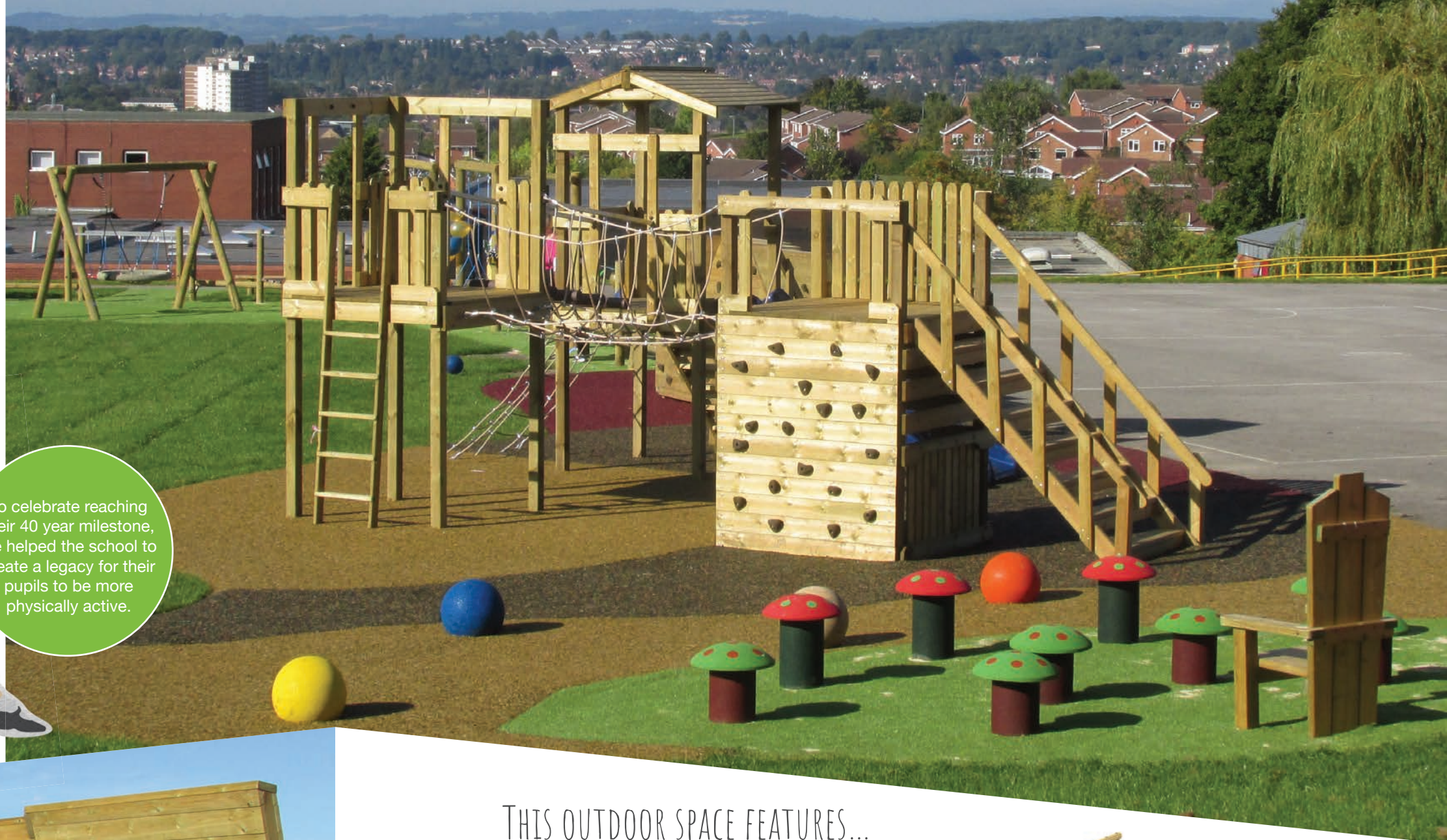


Meeting the need for both active and quiet spaces at Peters Hill Primary School

At Peters Hill Primary School the focus was on providing as many opportunities for running, jumping, climbing, reaching and swinging as possible. A striking Triple Woodland Tower stood at the centre of this large scheme with an Active Trail Low Level 15, Bouldering Wall and Nest Swing. An additional quiet area for reflection completed this play space, supporting a range of outcomes for all children, accessible all year round.

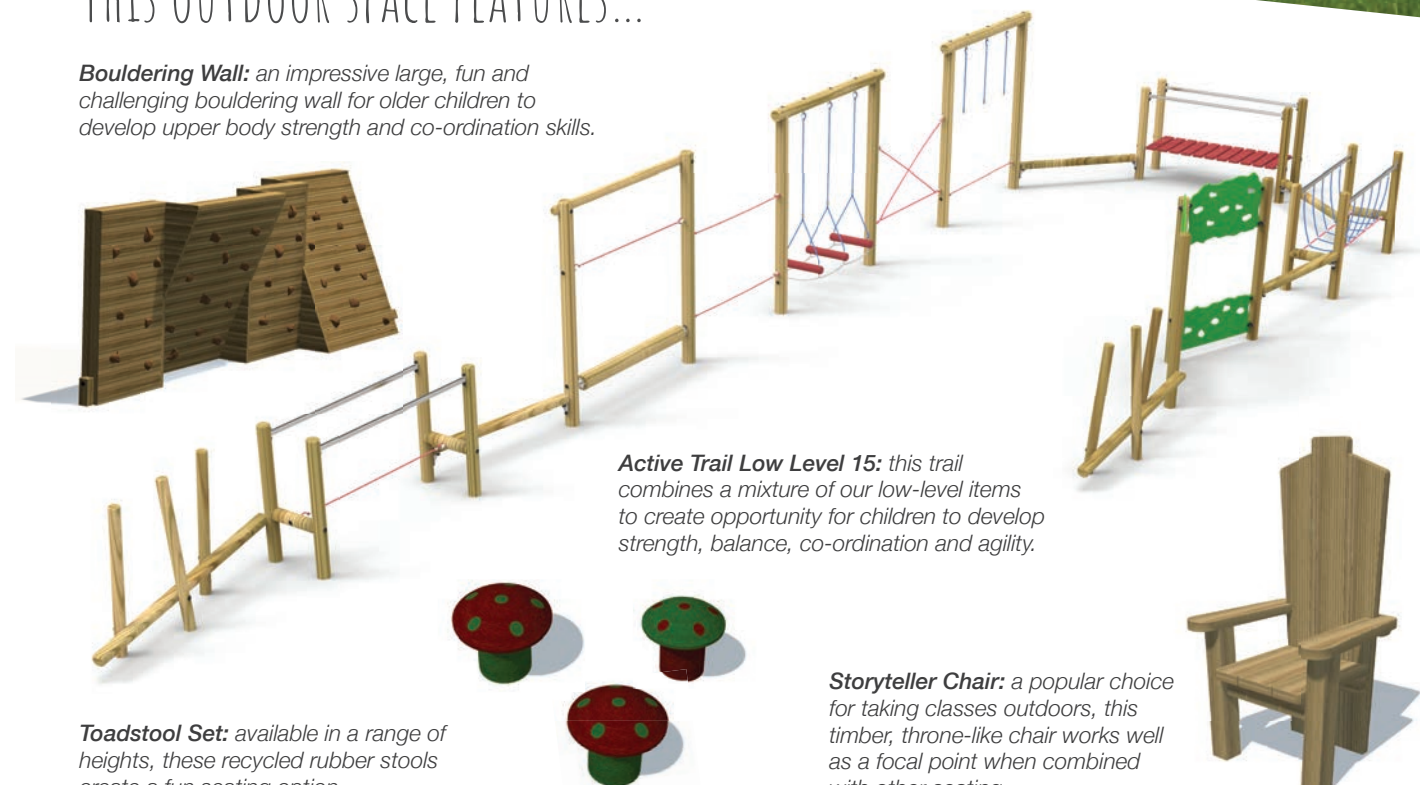


To celebrate reaching their 40 year milestone, we helped the school to create a legacy for their pupils to be more physically active.



THIS OUTDOOR SPACE FEATURES...

Bouldering Wall: an impressive large, fun and challenging bouldering wall for older children to develop upper body strength and co-ordination skills.



Active Trail Low Level 15: this trail combines a mixture of our low-level items to create opportunity for children to develop strength, balance, co-ordination and agility.

Toadstool Set: available in a range of heights, these recycled rubber stools create a fun seating option.

Storyteller Chair: a popular choice for taking classes outdoors, this timber, throne-like chair works well as a focal point when combined with other seating.



Over 20 years of creating playgrounds for schools and nurseries across the UK



Visit www.playforce.co.uk to view our whole product range or to read about completed projects near you

Sport, PE and Physical Activity at Furness Primary School

Furness Primary School was committed to transforming their outdoor space into a place where all ages could enjoy sports and running around. We installed a Timber MUGA on one side of the school, offering low maintenance all-weather surfacing, basketball hoops and goal ends, all designed to blend in with the school's other timber play items. On the other side of the school we created a dedicated sports area with metal MUGA, with running track and outdoor table tennis tables.



Furness Primary School benefited from a visit from Jeanette Kwakye to officially open the new sports areas, hold workshops with the children and share their story - an inspiring day for the whole school! Ask us if you'd like this option at your school - it's exclusively available from Playforce!

“IT WAS FANTASTIC FOR THE CHILDREN TO MEET SUCH AN INSPIRING SPORTING FIGURE. THEY ARE DELIGHTED WITH THE NEW FACILITIES AND WE HOPE THE NEW PLAYGROUND GOES SOME WAY TO KEEP OUR CHILDREN ACTIVE AND HEALTHY.”
Gloria Williams, Furness Primary School



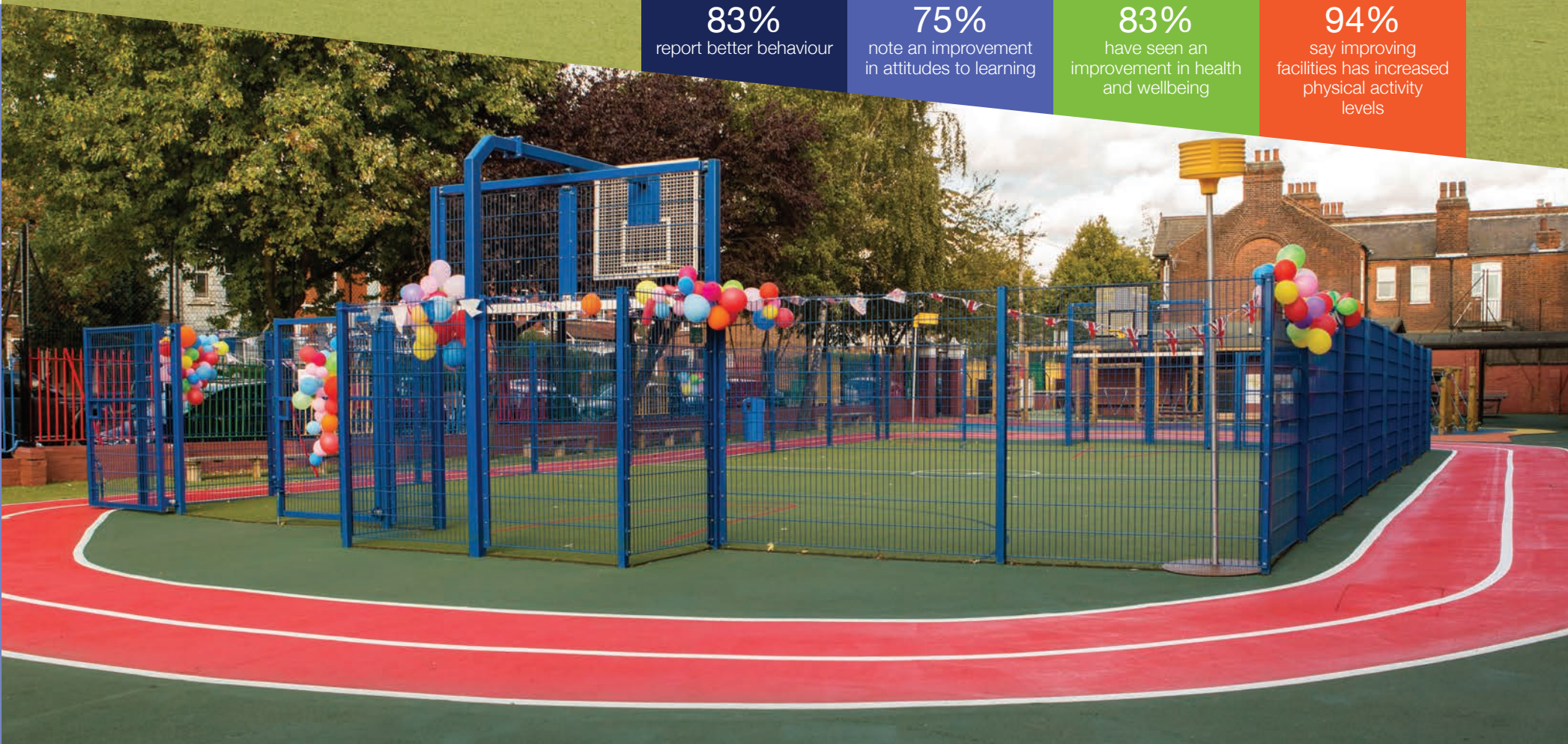
Playforce actively measure the impact of investment in outdoor spaces, including those dedicated to sport and physical activity. This ongoing research helps us to find better solutions for our customers, and to ensure our team provide the very best advice so that children and adults alike see the maximum benefit of any new sports area.

83%
report better behaviour

75%
note an improvement
in attitudes to learning

83%
have seen an
improvement in health
and wellbeing

94%
say improving
facilities has increased
physical activity
levels

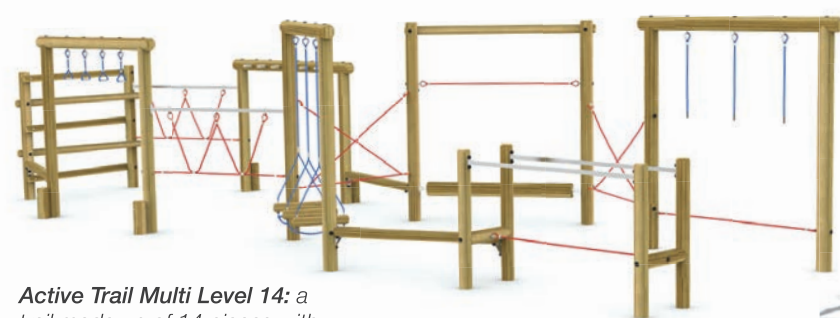




The outdoor developments continue at Furness Primary School

Designed to fit in with Furness Primary School's MUGA, we created an engaging, fun timber play space with our Active Trail Multi Level 14 and Woodland Tower at the centre. To this we added benches and picnic tables for quieter activities, as well as a Chalk Board and Magnetic Whiteboard for those that want to explore their creative side!

THIS OUTDOOR SPACE FEATURES...



Active Trail Multi Level 14: a trail made up of 14 pieces with a variety of physical challenges.



Extended Octagonal Shelter: provides protection from the elements as well as a place for large scale experiments, artwork or performance. Available with a felt roof option.



Double Woodland Tower: with platforms at 1.2m and 1.5m, children have an elevated view of their playground whilst climbing around the tower.

All timber shelters can be customised with a range of panels including, roll-down panels, timber panels, trellis, chalk boards and magnetic boards.



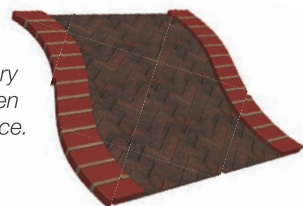


Creating a bespoke, natural space at Kings Hill Primary School

Kings Hill Primary School wanted to redevelop an outdated and under-used reception playground into a natural, unique, flowing play space, specifically for Reception aged children. The equipment was chosen carefully to help promote both physical and imaginative play opportunities, while a variety of different surfaces has helped to create zoning, resulting in a manageable, flexible, fantastic new play area.

THIS OUTDOOR SPACE FEATURES...

Textured Pathway:
create different sensory experiences as children move around the space.



Enchanted Forest with Water Pump:
provides a flexible space incorporating loose parts, planting and musical chimes.



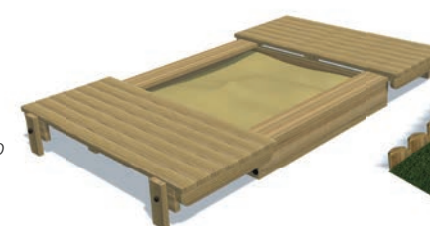
“
WE WERE VERY IMPRESSED WITH THE ATTENTION TO DETAIL FROM THE PLAYFORCE TEAM TO CREATE AN AMAZING NEW PLAY SPACE.
”
Kirsty Ryan, Glenbrook Primary School

Exploration and discovery at Glenbrook Primary School

Glenbrook Primary School wanted a new EYFS area, to cover all areas of learning but particularly focusing on communication skills and physical activity. They chose Playforce because of the positive impact we make on the environment through the use of sustainable and recyclable materials, which aligned with the school's zero waste ethos.

THIS OUTDOOR SPACE FEATURES...

Sliding Lid Sandpit:
the lid provides a building/construction area or transforms into an imaginative stage for role play.



Hump Back Hill: giving young children the experience of moving over sloping ground and providing inspiration for imaginative play.



A KS2 climbing challenge at North Baddesley Junior School

North Baddesley Junior School was keen to develop its outdoor space to offer pupils challenging active play opportunities. We offered them an alternative to a traditional trail with an impressive Tangle Tree Climber and Active Climber. Now the children can climb and clamber around the equipment in any direction they want, presenting a different challenge every day.



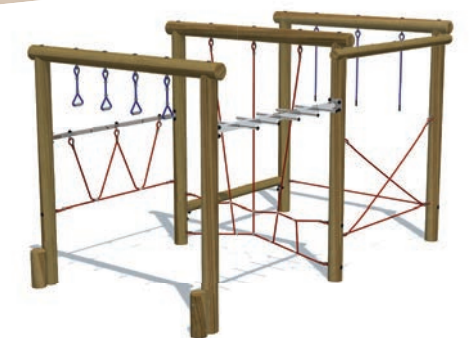
Play Lawn: Our premium option synthetic grass has a long pile which is soft and non-abrasive with a very natural appearance.



THIS OUTDOOR SPACE FEATURES...



Tangle Tree Climber: incorporates hammock nets for "hanging out" as well as steel core ropes for climbing on, over and through.



Active Climber 7: seven high level timber trail pieces combine to make a challenging climbing unit with a small foot print. Great for physical and social development as the children traverse the unit in all directions.

HAVE YOU THOUGHT ABOUT USING YOUR PE AND SPORT PREMIUM FUNDING ON ITEMS SUCH AS THE ONES INSTALLED AT NORTH BADDESELY?

In line with the requirements for using the funding, these pieces of equipment help to embed physical activity into the school day, especially for pupils who do not engage readily in traditional sport and PE.

How Clifton Primary School are keeping active and creative

Clifton Primary School was looking for a bright, cheerful outdoor space suitable for all ages. We presented a multi-zone scheme offering opportunities for music and performance, as well as active play, with our Web Traverse, Swinging Logs, Spring Balance Bar and Jungletops Tower. There's something for everyone, as well as lots of colourful surfacing to run around on.



Design something totally unique to your school! Woodland Towers and Jungletops Towers can be customised with a range of entry and exit points

“IT HAS BEEN GREAT FUN TRANSFORMING CLIFTON PRIMARY SCHOOL AND THERE IS NOTHING MORE REWARDING THAN VISITING POST-INSTALLATION TO SEE THE POSITIVE IMPACT IT IS MAKING ON CHILDREN AND STAFF ALIKE.”
James Chalk, Playforce Outdoor Grounds Consultant.



THIS OUTDOOR SPACE FEATURES...

Hump Back Bridge and Tunnel: a place for children to experience different terrain to clamber over and through and to explore rolling.

◀ **Wetpour:** available in a broad range of colours to create natural or striking designs.



Wooden Rattle Wheel Panel: rotating rattle drums create two distinctive sounds.



Jungletops Triple Tower: this fresh take on the playground tower, our Jungletops Tower range uses a triangular platform design and a range of entry/exit points, to provide a multitude of outcomes.

PLAY INSPECTIONS

The British Standards for Playground Equipment and Surfacing, BSEN 1176, advises that all playground installations should be inspected regularly by a competent person, and that the schedule should include routine daily/weekly inspections, operational and annual inspections.

We can take the hassle out of organising these for you with our Playforce Care inspection packages, undertaken by independent RPII-certified inspectors.

Contact your Customer Account Manager on 01225 792660 for more information.



REPAIRS

In order to keep your equipment in tip top condition, Playforce also offer a complete repair service, which includes both the supply of spare parts or a full installation service. Having your equipment repaired by Playforce also ensures that any current warranties are preserved.

To arrange a quote for repairs, please email repairs@playforce.co.uk.



WARRANTIES

We're proud of the quality of our equipment and the professionalism of our installation teams, but to give you extra peace of mind, Playforce equipment comes with warranties of 5, 10 and 15 years against material and manufacturing defects. All of our installation work is guaranteed for 12 months.

Further information on warranties and the length of warranty that applies to different materials can be found at www.playforce.co.uk/warranties.



OTHER SERVICES

As part of *idverde*, Playforce also has access to a wide range of outdoor services provided by experts in our sister companies, all through a single contact at Playforce. What's more, if you are part of a group of schools, we can often offer discounts on group packages.

These services include:

- Grounds maintenance, grass cutting and sports pitch markings
- Landscaping
- Arboriculture
- Planting schemes
- Gritting and snow clearance
- 24 hour helpdesk

For more information, please speak to your Customer Account Manager on 01225 792660.

GET
IN TOUCH

playforce

T: 01225 792660
sales@playforce.co.uk
www.playforce.co.uk

playforce



Playforce Limited
Covey Farm, Pitsford Road,
Chapel Brampton,
Northamptonshire, NN6 8BE

t: 01225 792660
www.playforce.co.uk

part of  idverde

Playforce Ltd is registered in England and Wales, registration number 03792761 VAT No 918 454 309