



# Cycle-Works

## BykeBin Locker



### Overview

This individual polyethylene locker stores adult bike plus one small children's bike or two children's bikes.

The BykeBin locker can be ordered in a variety of standard colours. Stone-effect colours, such as dark mill-stone, sandstone and granite complement listed buildings. Bright colours are a cheerful solution for schools and nurseries.

This locker requires minimal maintenance and will not rust. In addition, it is easy to install and move at a later date as it is delivered as a whole unit. The unit comes with padlock and key, a padlock securing bracket and 4 ground fixing bolts. It also incorporates internal cycle fixing brackets, a built-in floor with drainage holes plus two door hooks to hang personal belongings.

### Features & Benefits

- Parks one adult bicycle with room for one child's bicycle.
- Made from recyclable plastic.
- Can be ordered in a variety of standard colours.
- Can be installed in minutes, either in a single row or interlocked to create a freestanding compound.
- Huge advertising potential.



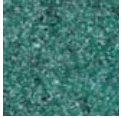


# BykeBin Locker

## Colours



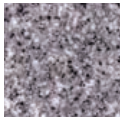
Dark Millstone



Emerald



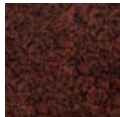
Sapphire



Pale Granite



Sandstone



Chestnut



Yellow



Black



Dark Green



Red



Dark Blue



Light Green



### Dimensions

Height: 1300mm

Length: 1700mm

Width: 960mm

## About Cycle-Works

Cycling is our passion. We believe that cycling is good for people, good for society and good for the environment. This belief underpins every-thing we do. We believe that the provision of quality facilities will in-crease the use and acceptance of the bicycle.

All our employees and associates cycle regularly in diverse disciplines such as commuting, touring and long distance audax rides. We are active in both local and national cycle campaigning.



## Cycle-Works Products

- Individual bicycle lockers
- High capacity 2-tier racks
- Open access and lockable shelters
- Wide range of individual racks
- Vertical and horizontal wall mounted racks
- Custom-made solutions

## Cycle-Works Services

- Initial site visits and advice on product selection
- Consultation on your construction plans
- Full delivery and installation services
- Aftercare and maintenance

