

8 7 6 5 4 3 2 1

F

F

E

E

D

D

C

C


B

B

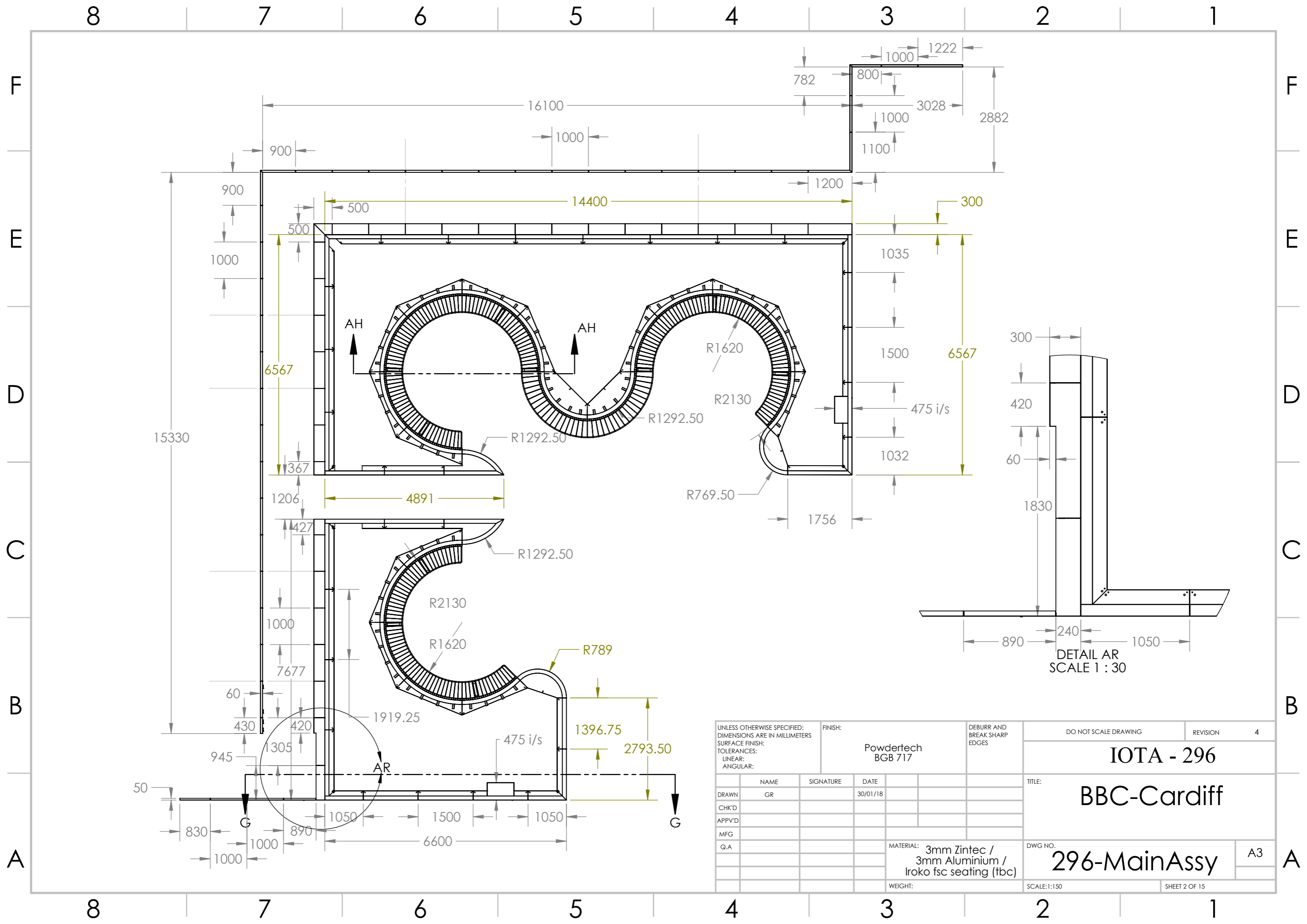
A

A



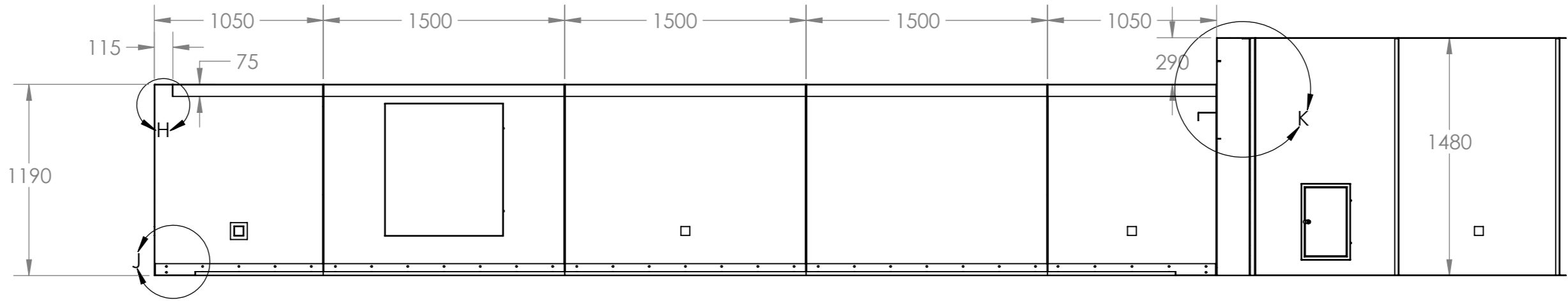
		FINISH: Powdertech BGB 717		DEBURR AND BREAK SHARP EDGES		DO NOT SCALE DRAWING		REVISION 4	
		DRAWN GR		DATE 30/01/18		TITLE: BBC - Cardiff		IOTA - 296	
CHK'D						DWG NO. 296-MainAssy			
APPVD									
MFG				MATERIAL: 3mm Zintec / 3mm Aluminium / Iroko fsc seating (tbc)					
Q.A						SCALE: 1:150		SHEET 1 OF 15	
3rd Angle				A3					

8 7 6 5 4 3 2 1

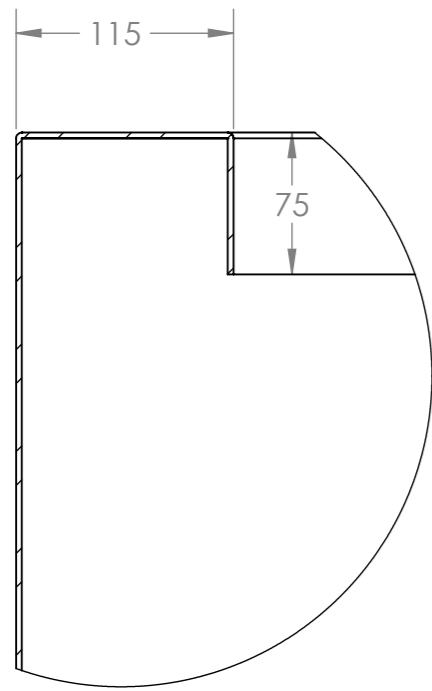


UNLESS OTHERWISE SPECIFIED: DIMENSIONS ARE IN MILLIMETERS		FINISH: Powdertech BGB 717		DEBURR AND BREAK SHARP EDGES		DO NOT SCALE DRAWING		REVISION 4	
SURFACE FINISH:						TITLE: <b>IOTA - 296</b> <b>BBC-Cardiff</b>			
TOLERANCES: LINEAR: ANGULAR:									
DRAWN	NAME GR	SIGNATURE	DATE 30/01/18			DWG NO. <b>296-MainAssy</b>			
CHK'D									
APPV'D						SCALE:1:150			
MFG									
Q.A				MATERIAL: 3mm Zintec / 3mm Aluminium / Iroko fsc seating (fbc)		SHEET 2 OF 15			
				WEIGHT:					

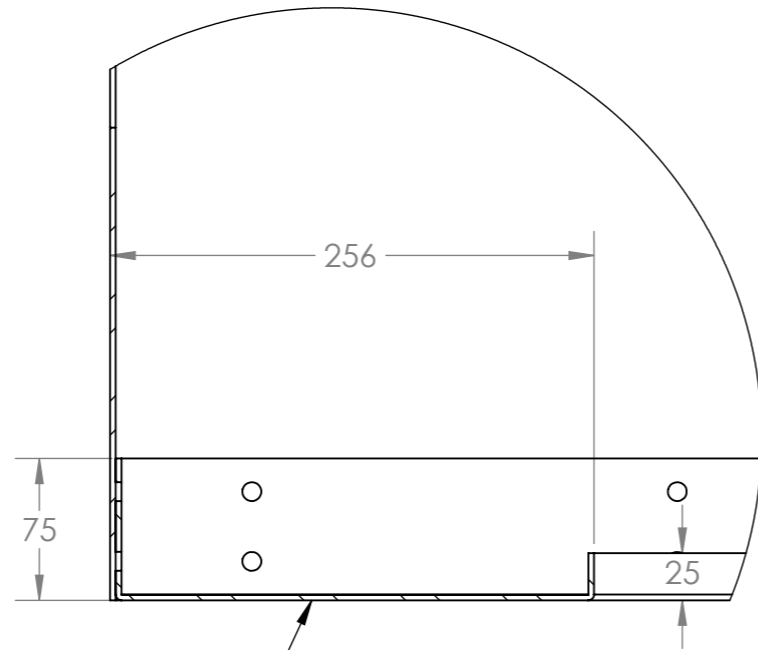
8 7 6 5 4 3 2 1



SECTION G-G  
SCALE 1 : 30

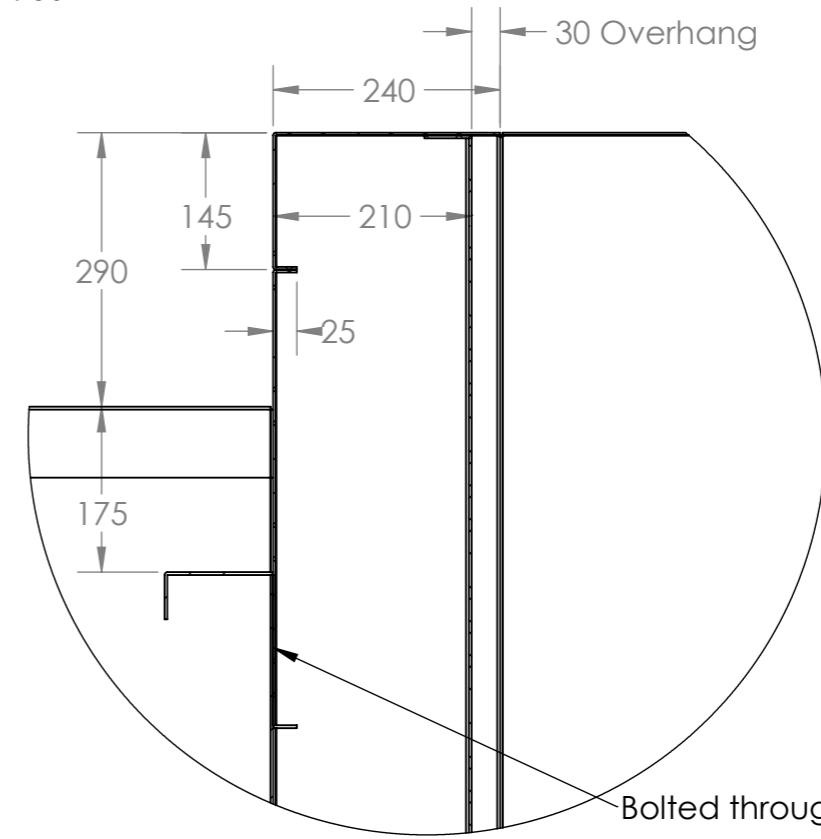


DETAIL H  
SCALE 1 : 4



DETAIL J  
SCALE 1 : 4

Separate footing plug welded to planter skin below granite paving level. Necessary due to manufacturing limitations.



DETAIL K  
SCALE 1 : 8

Typical construction

UNLESS OTHERWISE SPECIFIED: DIMENSIONS ARE IN MILLIMETERS SURFACE FINISH: TOLERANCES: LINEAR: ANGULAR:			FINISH:  Powdertech BGB 717		DEBURR AND BREAK SHARP EDGES		DO NOT SCALE DRAWING		REVISION 4			
							IOTA - 296					
							BBC-Cardiff					
							TITLE:		296-MainAssy			
							DRAWN: GR					DATE: 30/01/18
							CHK'D		MATERIAL: 3mm Zintec / 3mm Aluminium / Iroko fsc seating (tbc)		A3	
							APPV'D		DWG NO.		SHEET 3 OF 15	
							MFG		SCALE: 1:150			
							Q.A		WEIGHT:			

8 7 6 5 4 3 2 1

F  
E  
D  
C  
B  
A

F  
E  
D  
C  
B  
A

8 7 6 5 4 3 2 1

F

F

E

E

D

D

C

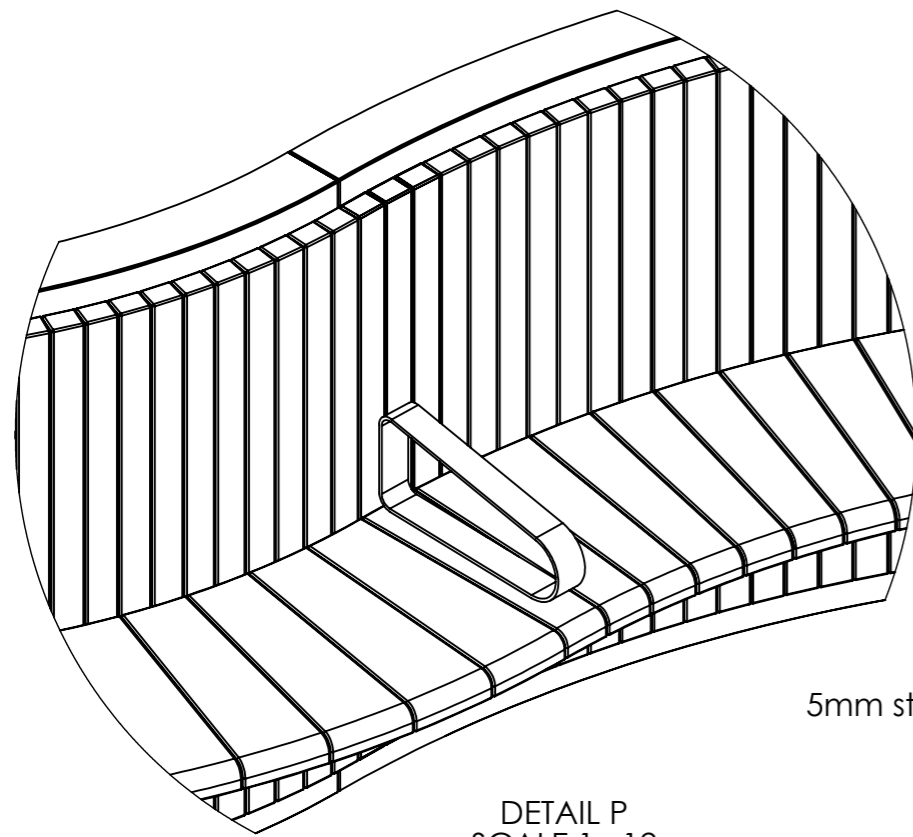
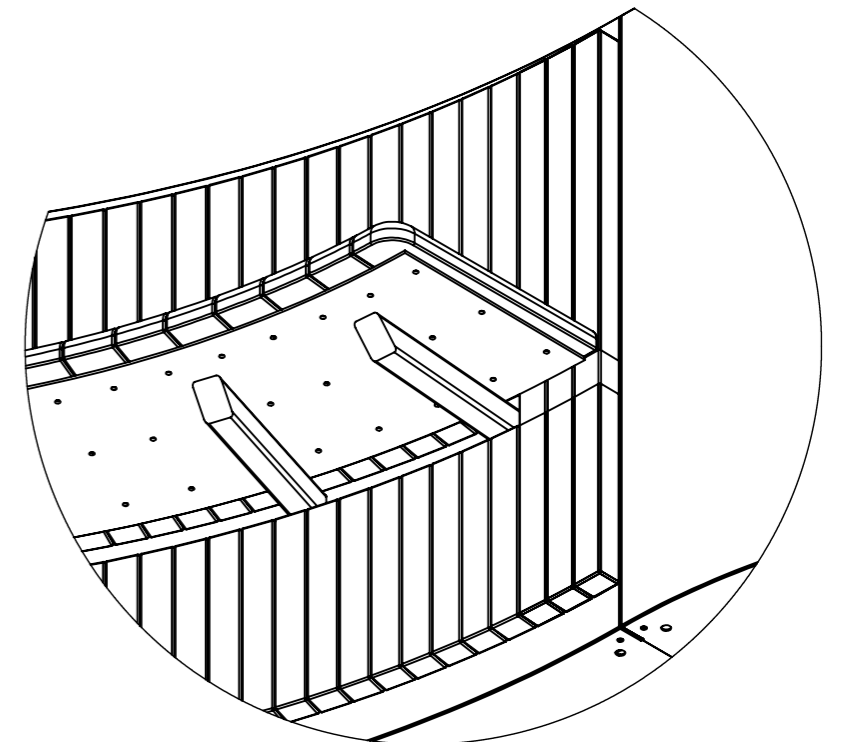
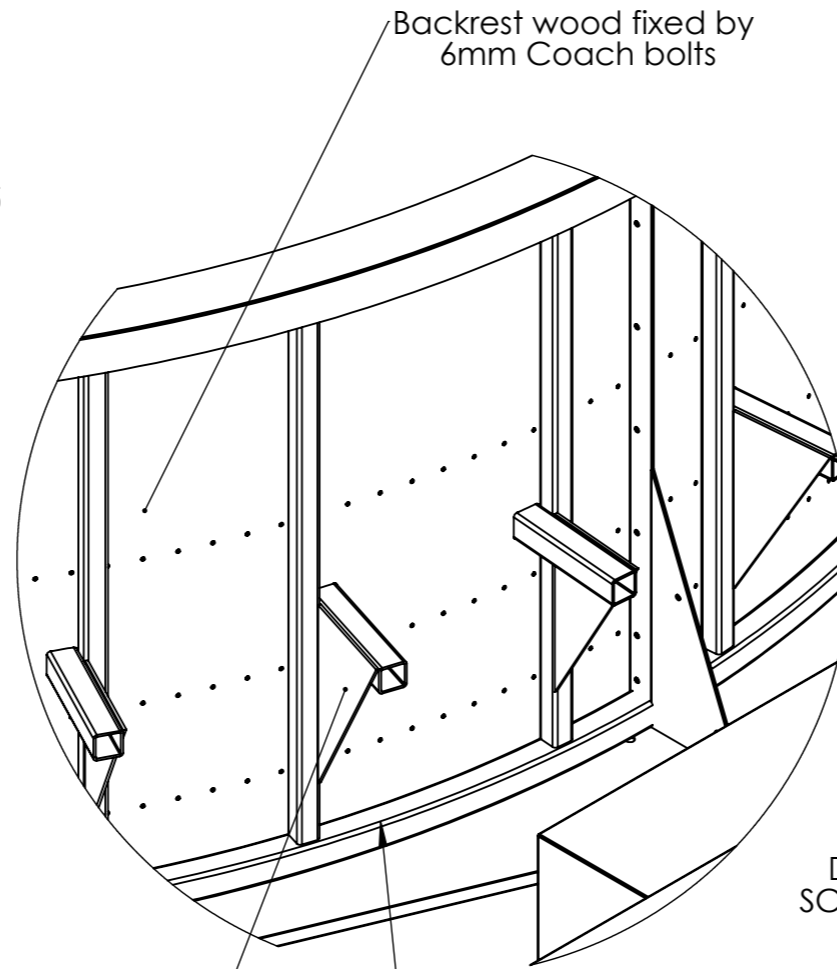
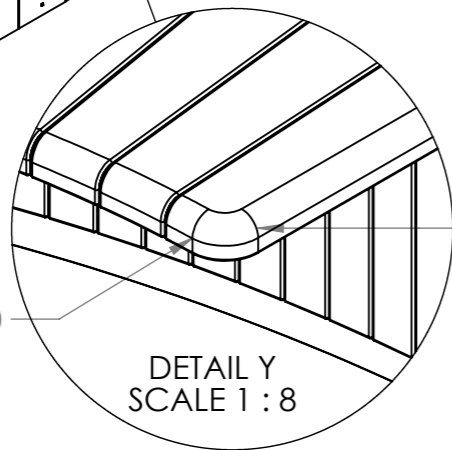
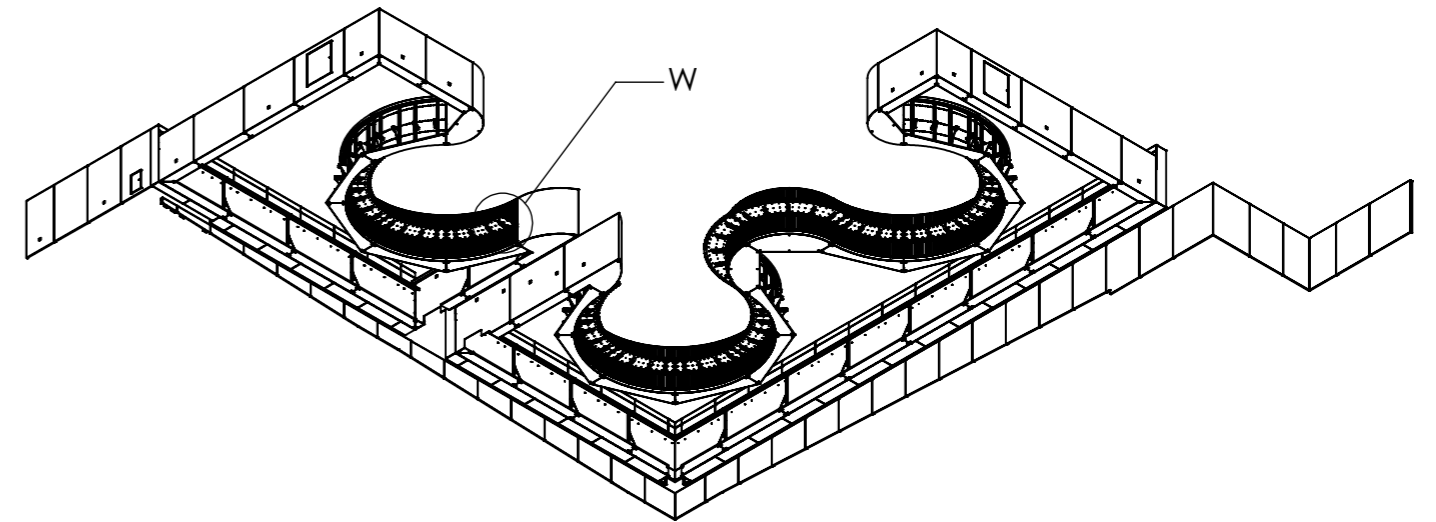
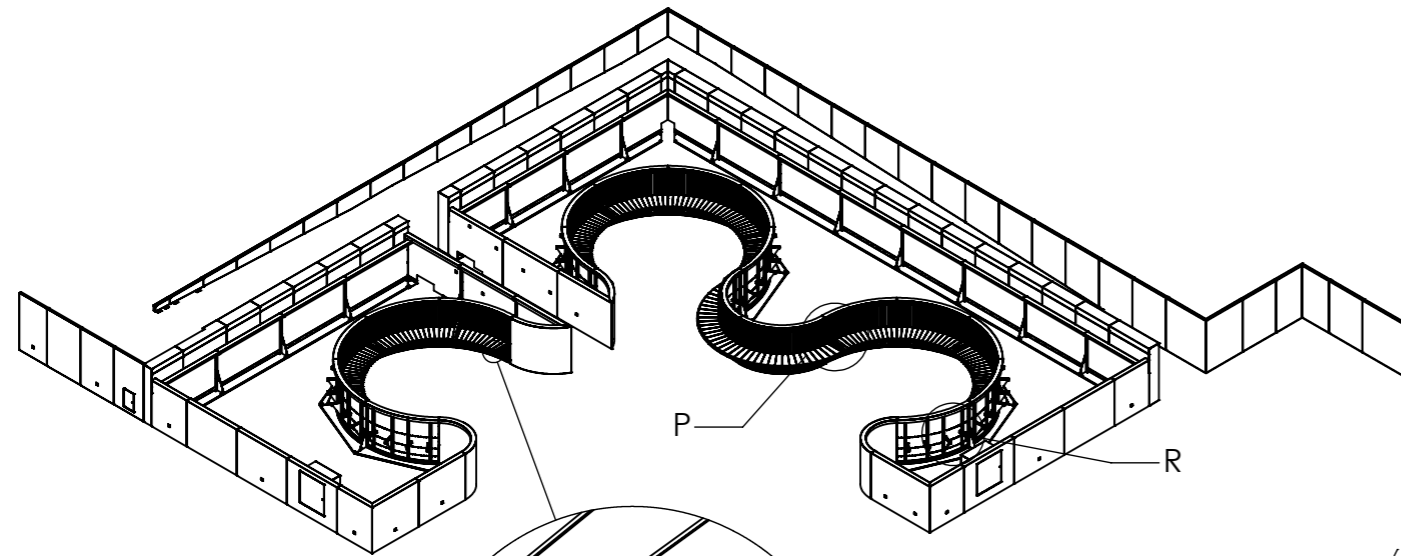
C

B

B

A

A



5mm strengthening gussets

50 x 50 x 4 Seating support frame

DETAIL R  
SCALE 1 : 12

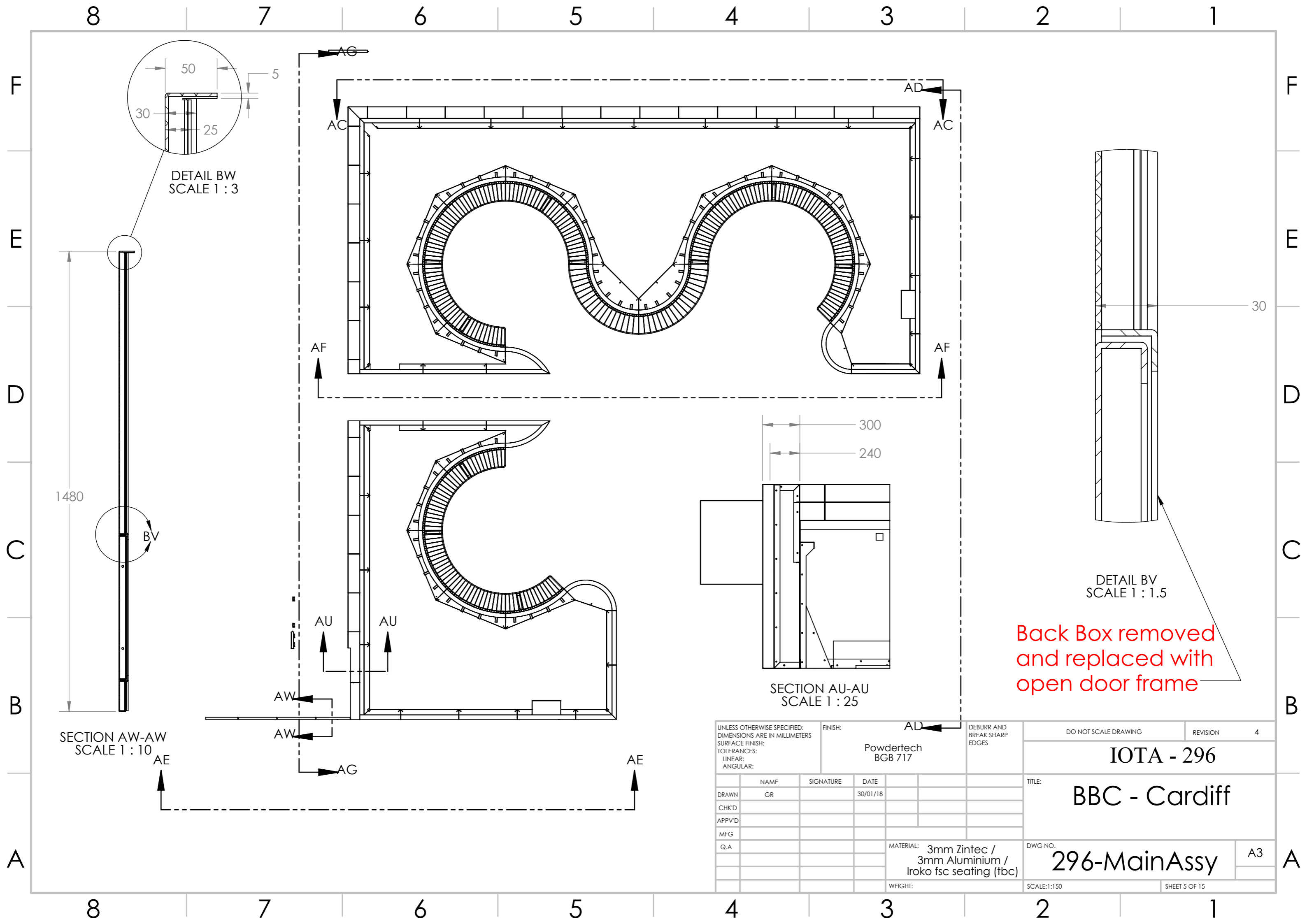
DETAIL W  
SCALE 1 : 12

DETAIL P  
SCALE 1 : 12

DETAIL Y  
SCALE 1 : 8

UNLESS OTHERWISE SPECIFIED: DIMENSIONS ARE IN MILLIMETERS		FINISH:		DEBURR AND BREAK SHARP EDGES		DO NOT SCALE DRAWING		REVISION	
SURFACE FINISH:		Powdertech						4	
TOLERANCES:		BGB 717							
LINEAR:									
ANGULAR:									
DRAWN		NAME		SIGNATURE		DATE		TITLE:	
CHK'D		GR				30/01/18		IOTA - 296	
APPV'D								BBC -Cardiff	
MFG								DWG NO.	
Q.A								296-MainAssy	
								A3	
								SCALE:1:150	
								SHEET 4 OF 15	

8 7 6 5 4 3 2 1



DETAIL BW  
SCALE 1 : 3

SECTION AW-AW  
SCALE 1 : 10

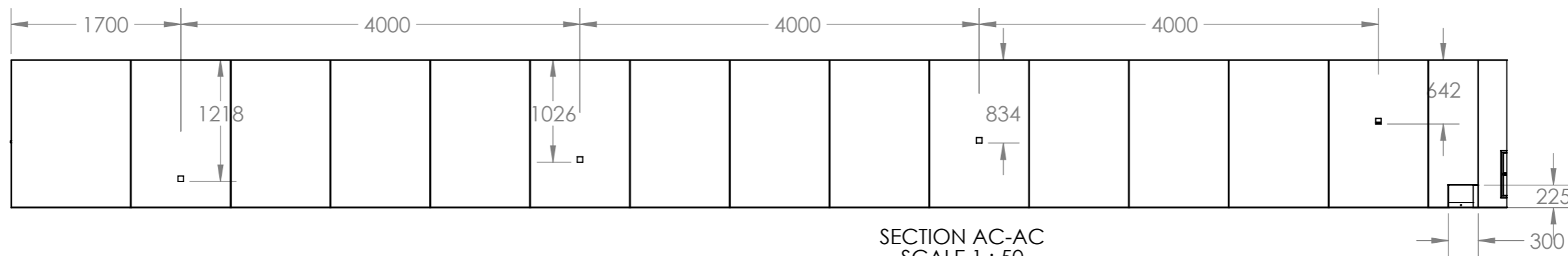
SECTION AU-AU  
SCALE 1 : 25

DETAIL BV  
SCALE 1 : 1.5

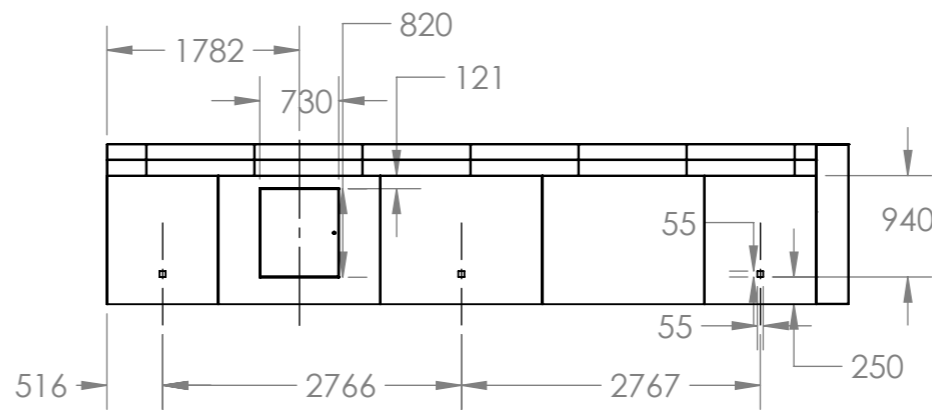
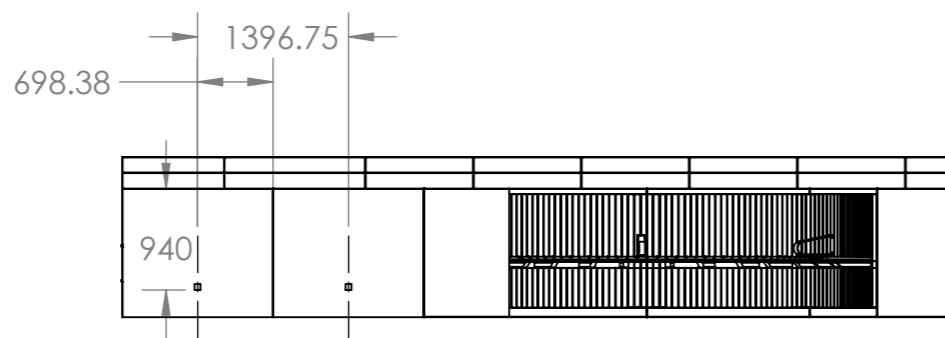
Back Box removed  
and replaced with  
open door frame

UNLESS OTHERWISE SPECIFIED: DIMENSIONS ARE IN MILLIMETERS		FINISH:		DEBURR AND BREAK SHARP EDGES	
SURFACE FINISH:		Powdertech		DO NOT SCALE DRAWING	
TOLERANCES:		BGB 717		REVISION 4	
LINEAR:				IOTA - 296	
ANGULAR:				BBC - Cardiff	
NAME	SIGNATURE	DATE	TITLE:		
GR		30/01/18	296-MainAssy		
CHK'D			DWG NO.		A3
APPV'D			296-MainAssy		
MFG			SCALE:1:150		
Q.A			SHEET 5 OF 15		
MATERIAL: 3mm Zintec / 3mm Aluminium / Iroko fsc seating (tbc)			WEIGHT:		

8 7 6 5 4 3 2 1

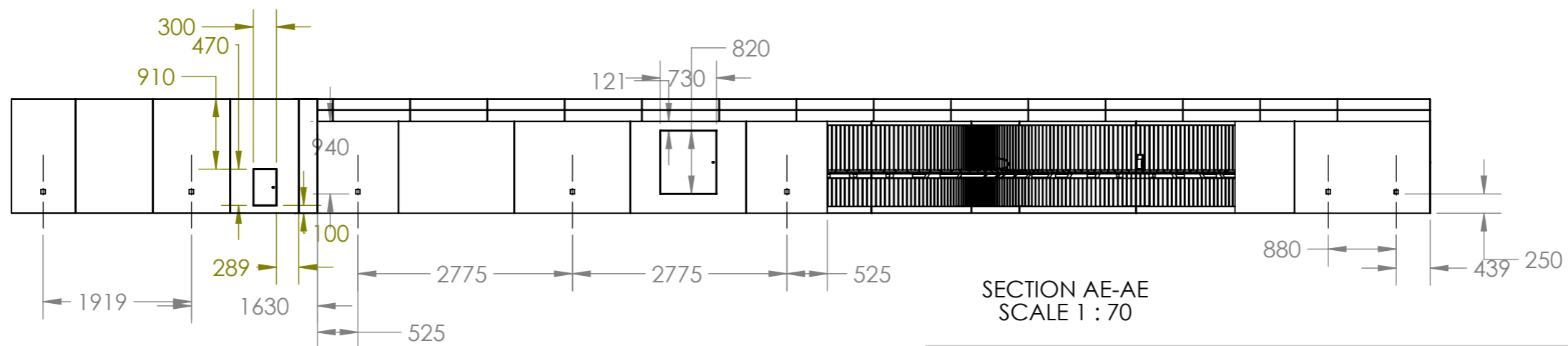


SECTION AC-AC  
SCALE 1 : 50



SECTION AD-AD  
SCALE 1 : 70

SECTION AE-AE  
SCALE 1 : 70



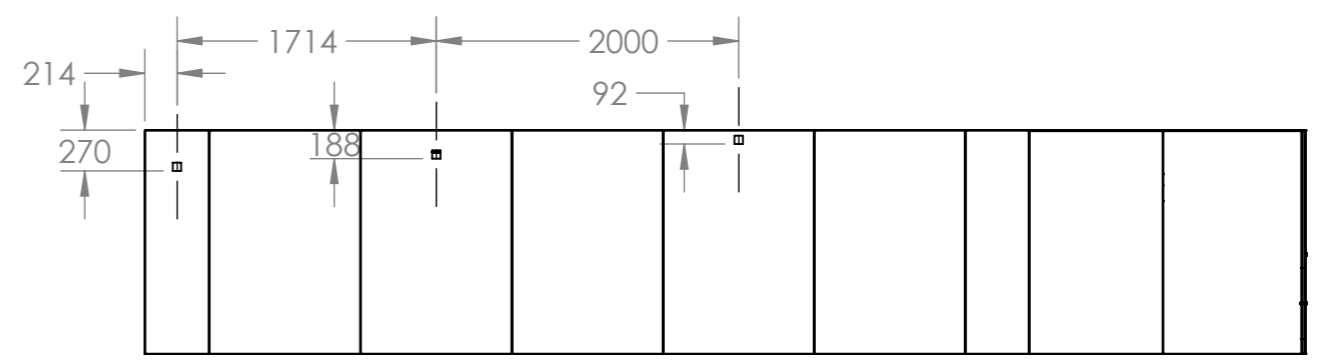
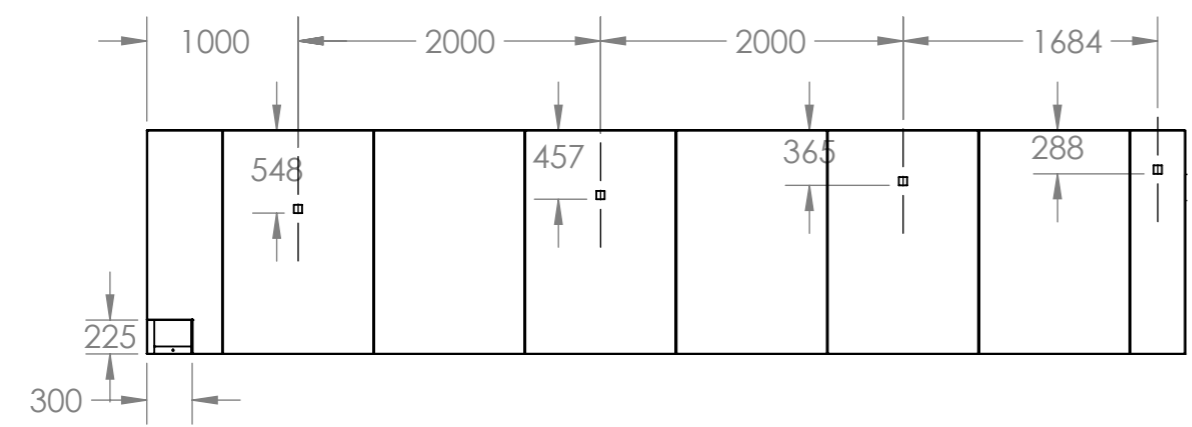
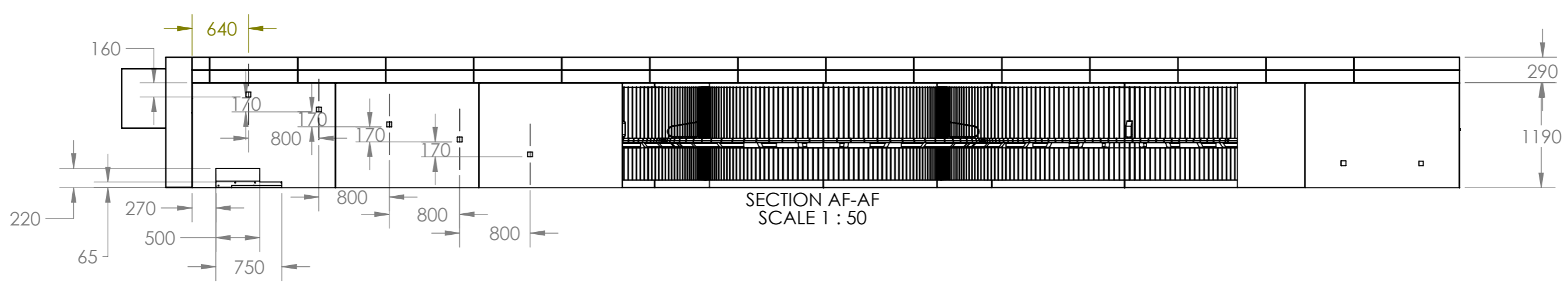
UNLESS OTHERWISE SPECIFIED: DIMENSIONS ARE IN MILLIMETERS			FINISH: Powdertech BGB 717		DEBURR AND BREAK SHARP EDGES		DO NOT SCALE DRAWING		REVISION 4		
SURFACE FINISH:							IOTA - 296				
TOLERANCES:											
LINEAR:							BBC - Cardiff				
ANGULAR:											
DRAWN		NAME	SIGNATURE		DATE		TITLE:				
CHK'D		GR			30/01/18		296-MainAssy				
APPV'D											
MFG							DWG NO.		A3		
Q.A							MATERIAL: 3mm Zintec / 3mm Aluminium / Iroko fsc seating (tbc)		SCALE:1:150		
							WEIGHT:		SHEET 6 OF 15		

8 7 6 5 4 3 2 1

F  
E  
D  
C  
B  
A

F  
E  
D  
C  
B  
A

8 7 6 5 4 3 2 1

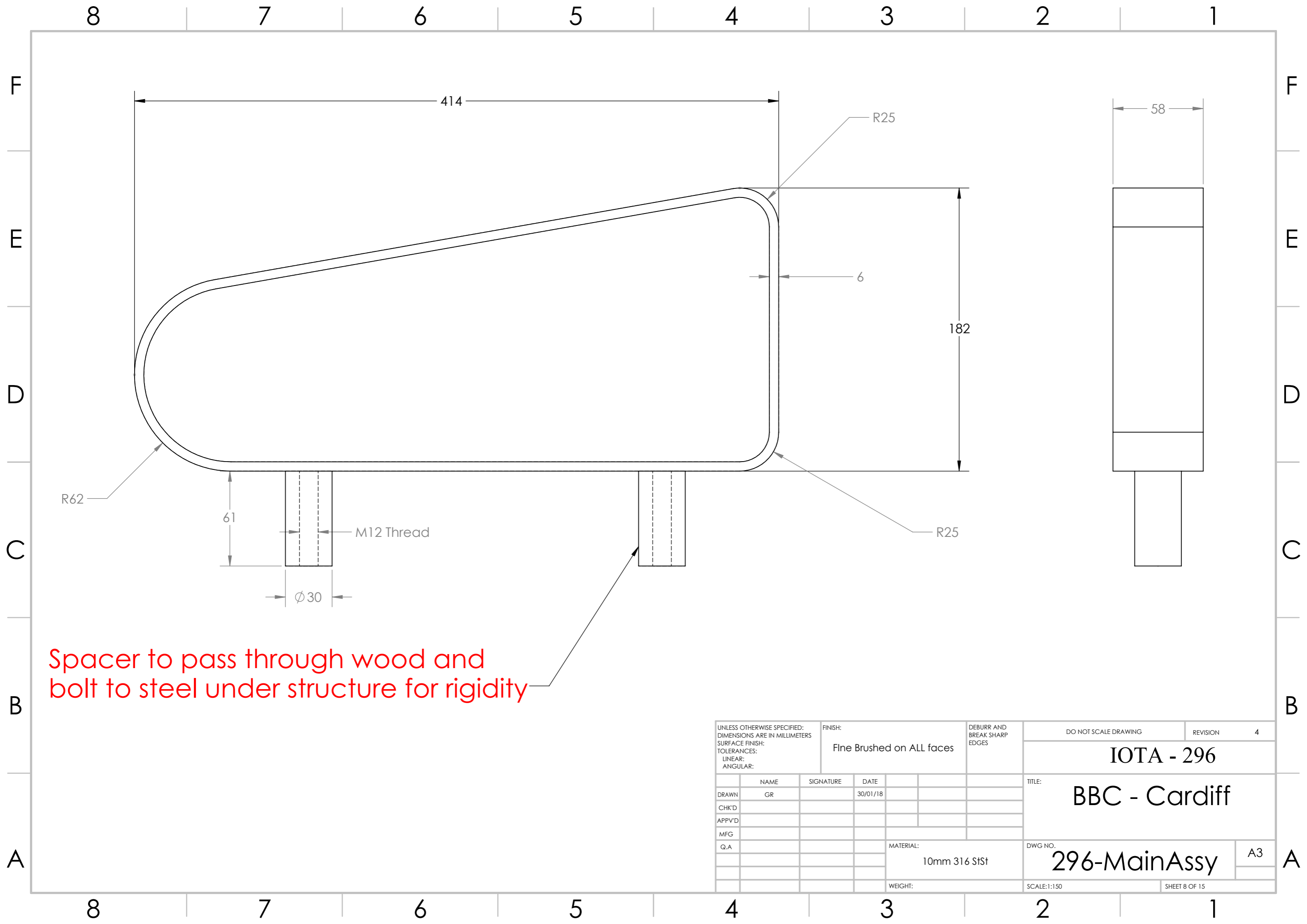


UNLESS OTHERWISE SPECIFIED: DIMENSIONS ARE IN MILLIMETERS SURFACE FINISH: TOLERANCES: LINEAR: ANGULAR:		FINISH:  Powdertech BGB 717		DEBURR AND BREAK SHARP EDGES		DO NOT SCALE DRAWING		REVISION 4	
						<b>IOTA - 296</b>			
						<b>BBC - Cardiff</b>			
						DWG NO. <b>296-MainAssy</b>		A3	
						SCALE:1:150		SHEET 7 OF 15	

8 7 6 5 4 3 2 1

F  
E  
D  
C  
B  
A

F  
E  
D  
C  
B  
A

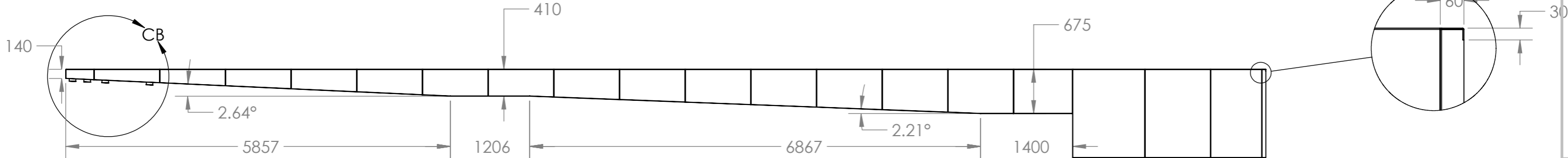
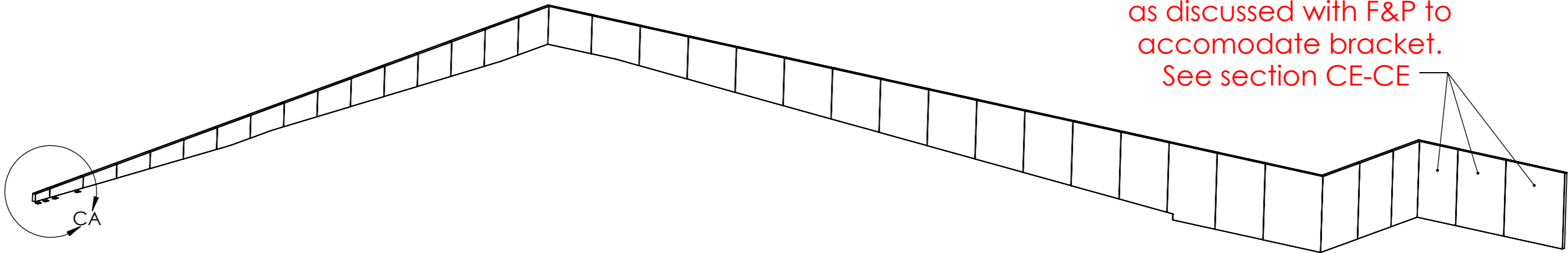


Spacer to pass through wood and bolt to steel under structure for rigidity

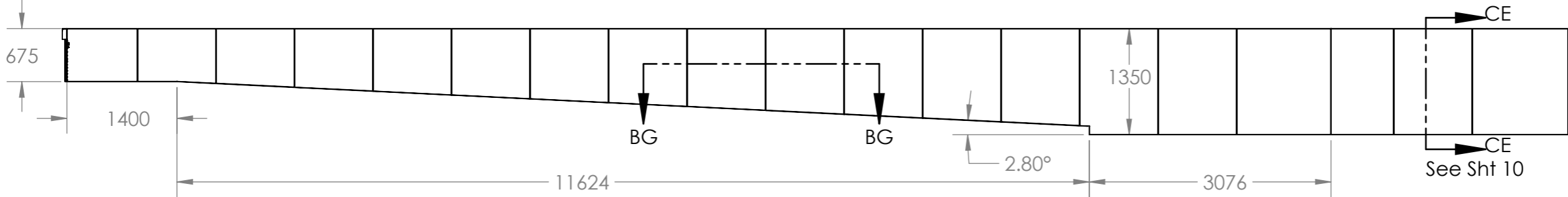
UNLESS OTHERWISE SPECIFIED: DIMENSIONS ARE IN MILLIMETERS SURFACE FINISH: TOLERANCES: LINEAR: ANGULAR:			FINISH: Fine Brushed on ALL faces		DEBURR AND BREAK SHARP EDGES		DO NOT SCALE DRAWING		REVISION 4				
							IOTA - 296						
							BBC - Cardiff						
							DWG NO.		296-MainAssy			A3	
							MATERIAL:		10mm 316 StSt			SCALE:1:150	
							WEIGHT:					SHEET 8 OF 15	
	NAME	SIGNATURE	DATE				TITLE:						
DRAWN	GR		30/01/18										
CHK'D													
APPV'D													
MFG													
Q.A													



Side folds on these panels recessed  
as discussed with F&P to  
accomodate bracket.  
See section CE-CE



DETAIL BF  
SCALE 1 : 10

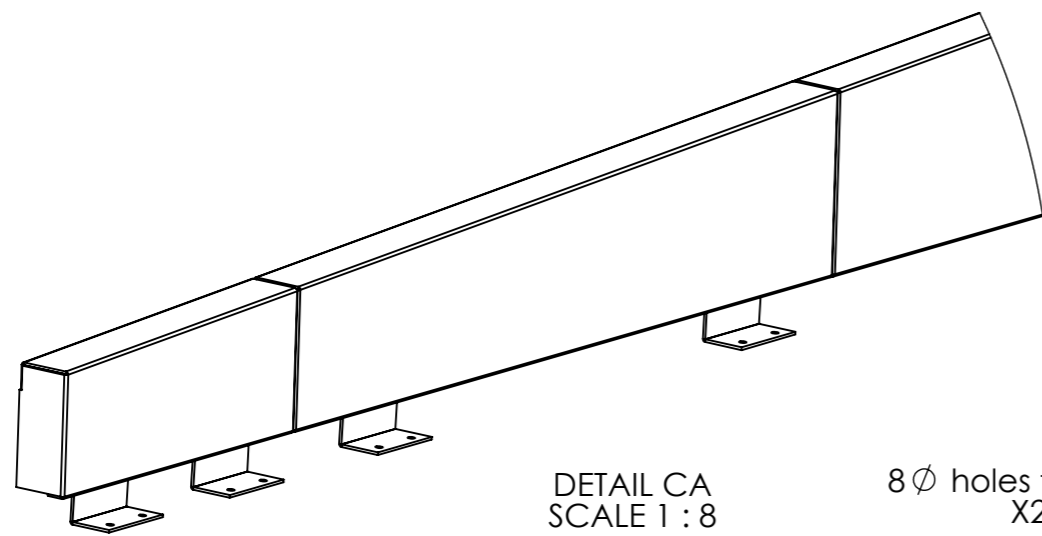


UNLESS OTHERWISE SPECIFIED: DIMENSIONS ARE IN MILLIMETERS		FINISH: Powdertech BGB 717		DEBURR AND BREAK SHARP EDGES		DO NOT SCALE DRAWING		REVISION 4	
SURFACE FINISH:						IOTA - 296			
TOLERANCES: LINEAR: ANGULAR:									
DRAWN GR		SIGNATURE		DATE 30/01/18		TITLE: BBC Cardiff			
CHK'D						DWG NO. 296-MainAssy			
APPV'D									
MFG						SCALE:1:150		SHEET 9 OF 15	
Q.A						MATERIAL: 3mm Zintec / 3mm Aluminium / Iroko fsc seating (tbc)		A3	
						WEIGHT:			

8 7 6 5 4 3 2 1

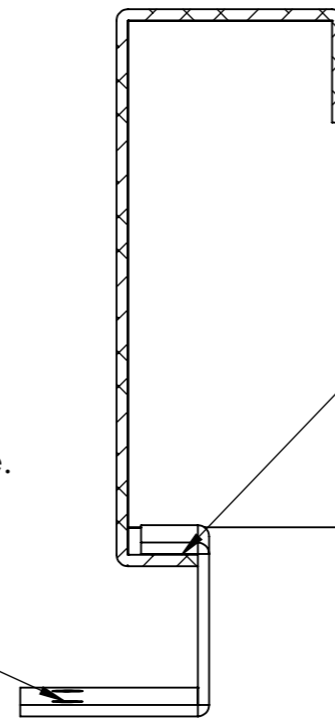
F

F

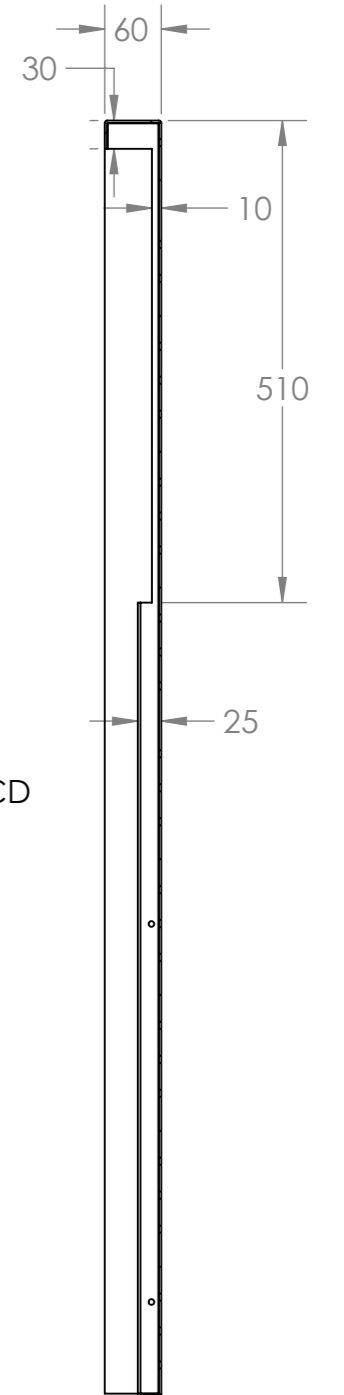


DETAIL CA  
SCALE 1 : 8

8  $\varnothing$  holes for fixing to concrete.  
X2 per bracket.



Bracket welded to base of panel

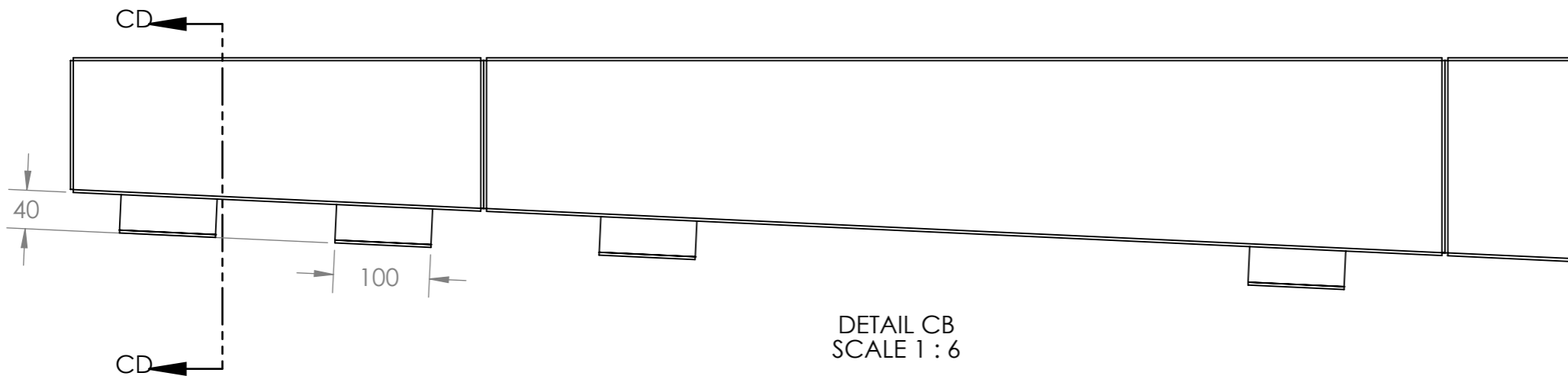


SECTION CD-CD  
SCALE 1 : 2

SECTION CE-CE  
SCALE 1 : 8

D

D



DETAIL CB  
SCALE 1 : 6

C

C

B

B

UNLESS OTHERWISE SPECIFIED: DIMENSIONS ARE IN MILLIMETERS SURFACE FINISH: TOLERANCES: LINEAR: ANGULAR:			FINISH:  Powdertech BGB 717		DEBURR AND BREAK SHARP EDGES		DO NOT SCALE DRAWING		REVISION 4			
							<b>IOTA - 296</b>					
							<b>BBC Cardiff</b>					
							TITLE:		<b>296-MainAssy</b>			
DRAWN		NAME		SIGNATURE		DATE		DWG NO.				
CHK'D						30/01/18		A3				
APPV'D												
MFG												
Q.A												
							MATERIAL:		<b>3mm Zintec / 3mm Aluminium / Iroko fsc seating (tbc)</b>			
							WEIGHT:					SCALE:1:150

8 7 6 5 4 3 2 1

A

A

8 7 6 5 4 3 2 1

F

F

E

E

D

D

C

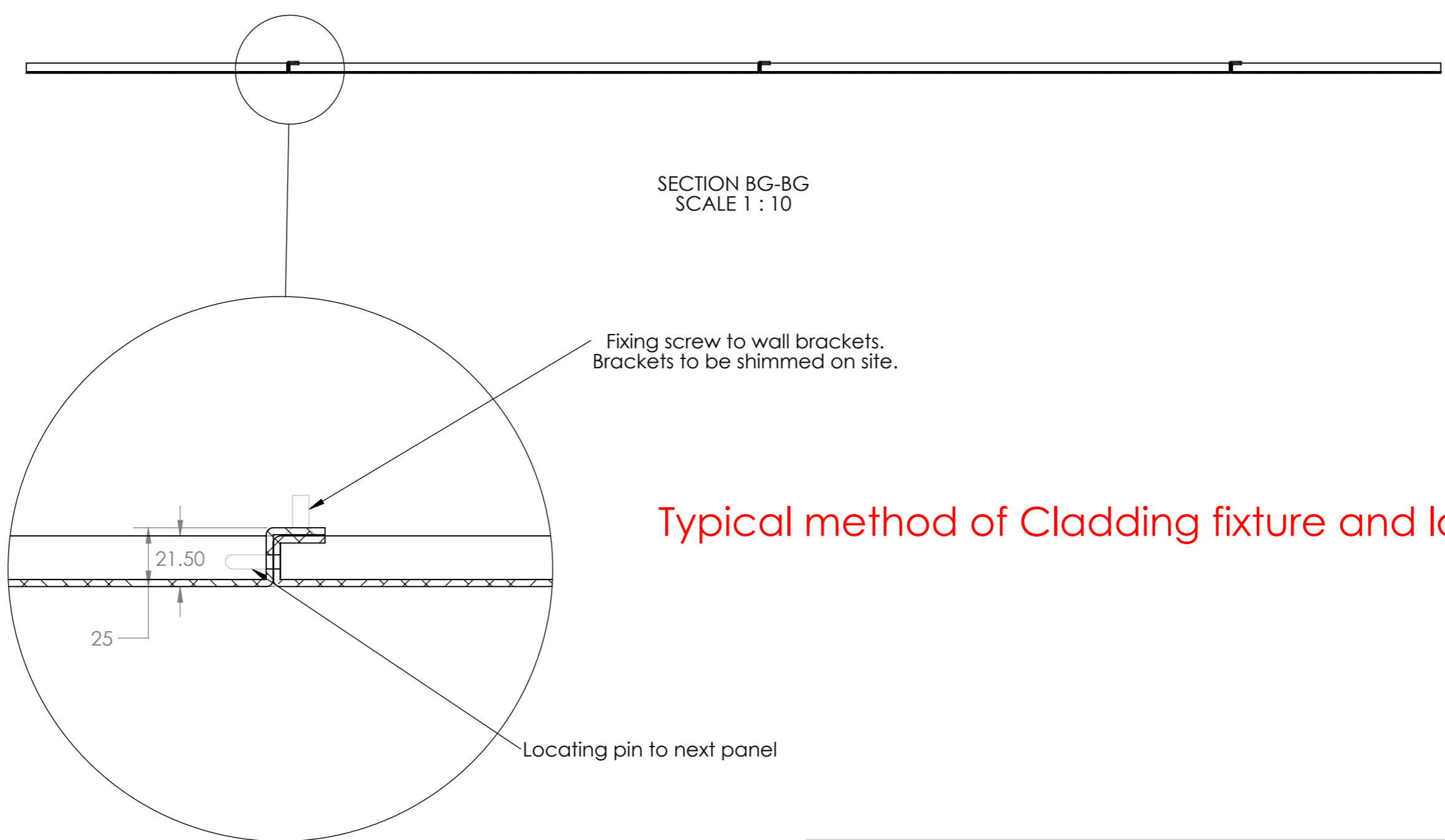
C

B

B

A

A



SECTION BG-BG  
SCALE 1 : 10

DETAIL BH  
SCALE 1 : 2

Fixing screw to wall brackets.  
Brackets to be shimmed on site.

Typical method of Cladding fixture and location.

Locating pin to next panel

UNLESS OTHERWISE SPECIFIED: DIMENSIONS ARE IN MILLIMETERS			FINISH:  Powdertech BGB 717		DEBURR AND BREAK SHARP EDGES		DO NOT SCALE DRAWING		REVISION 4		
SURFACE FINISH:							IOTA - 296				
TOLERANCES: LINEAR: ANGULAR:							BBC Cardiff				
DRAWN		GR	SIGNATURE		DATE 30/01/18		TITLE: 296-MainAssy				
CHK'D							DWG NO.		A3		
APPV'D							MATERIAL: 3mm Zintec / 3mm Aluminium / Iroko fsc seating (tbc)		296-MainAssy		
MFG							WEIGHT:		SCALE:1:150		SHEET 11 OF 15
Q.A											

8 7 6 5 4 3 2 1

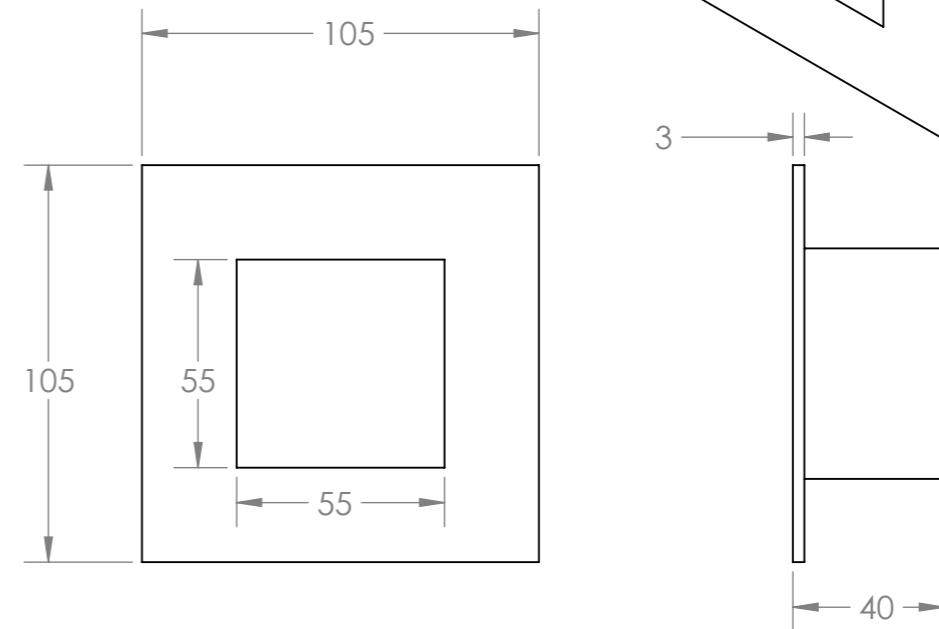
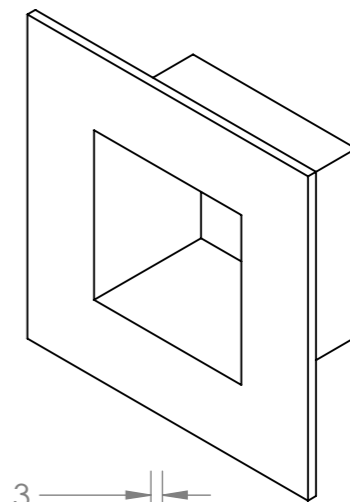
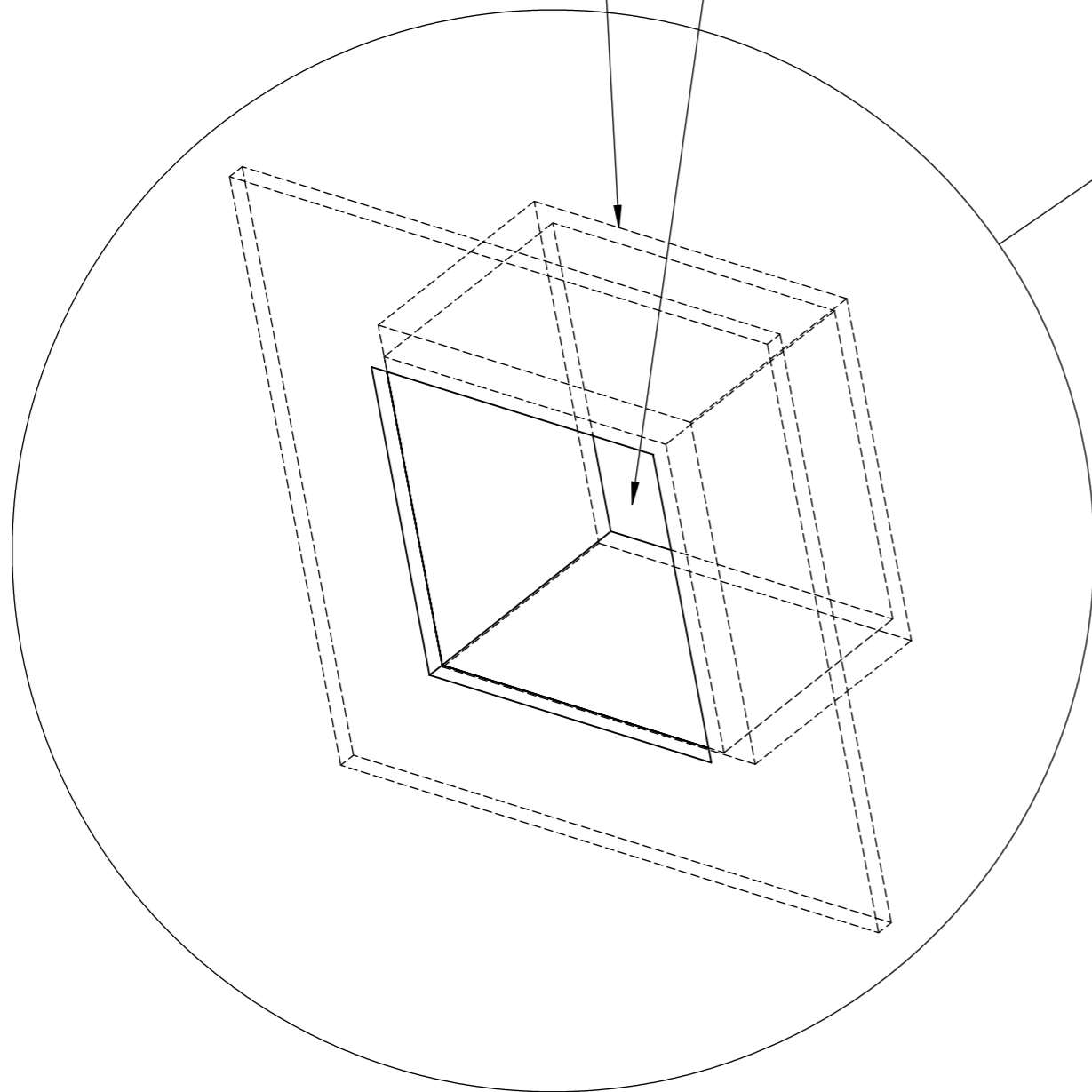
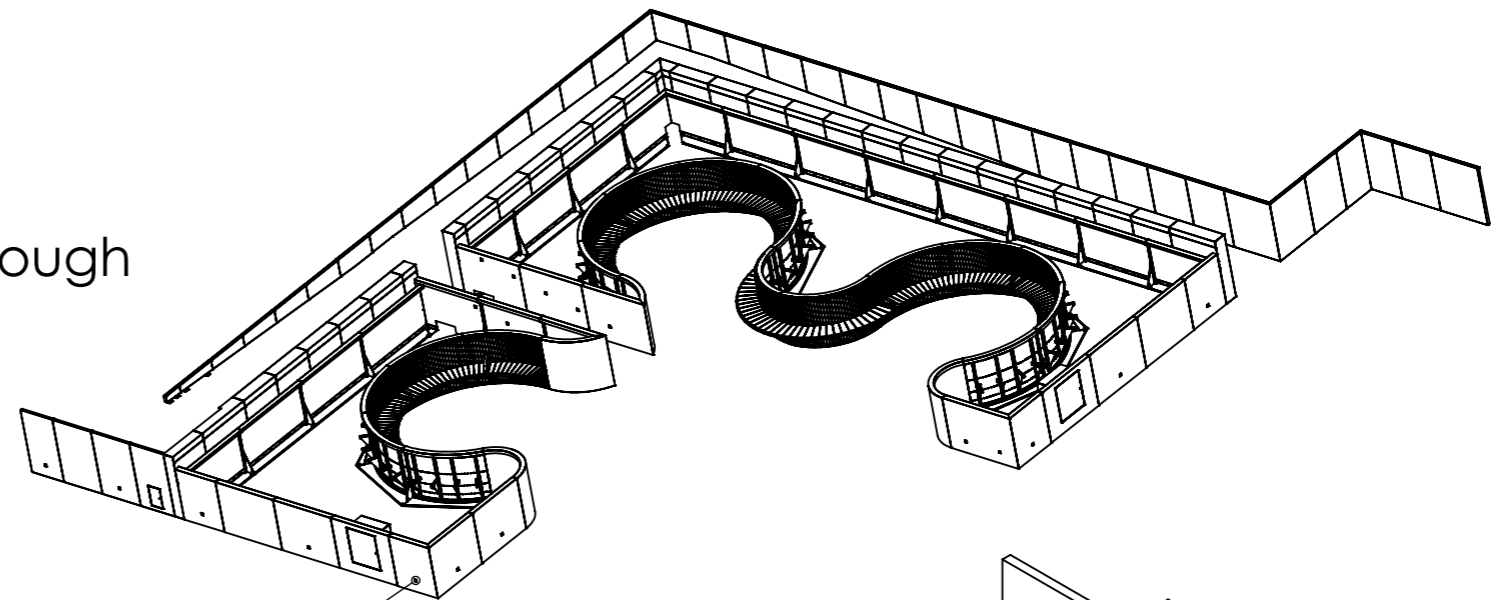
8 7 6 5 4 3 2 1

F

F

Lighting surround welded to each lighting aperture

Open through

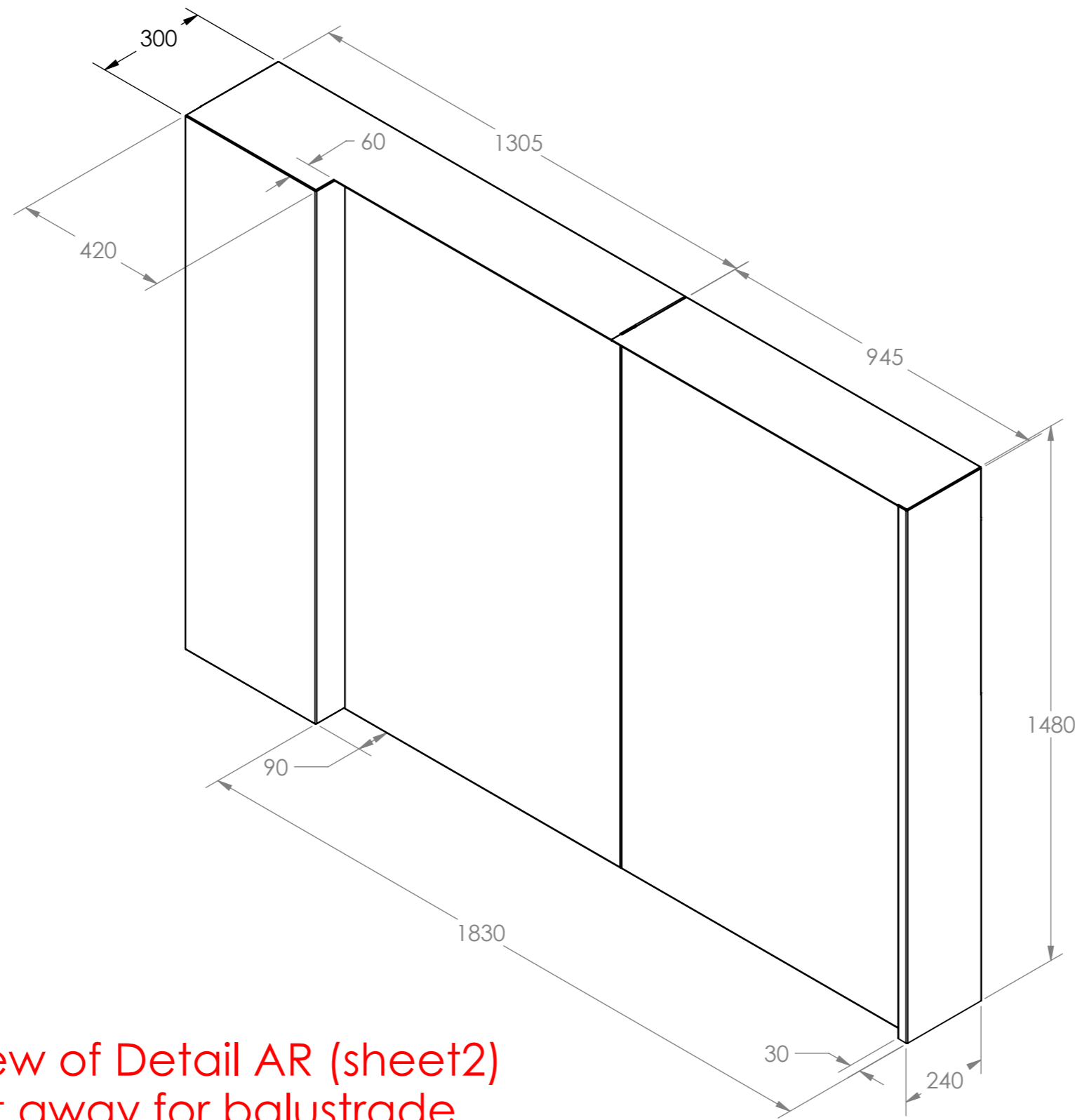


UNLESS OTHERWISE SPECIFIED: DIMENSIONS ARE IN MILLIMETERS SURFACE FINISH: TOLERANCES: LINEAR: ANGULAR:			FINISH:  Powdertech BGB 717		DEBURR AND BREAK SHARP EDGES		DO NOT SCALE DRAWING		REVISION 4			
							<b>IOTA - 296</b>					
							<b>BBC Cardiff</b>					
							TITLE:		<b>296-MainAssy</b>			
							DWG NO.					A3
							MATERIAL: 3mm Zintec / 3mm Aluminium / Iroko fsc seating (tbc)		SCALE:1:150		SHEET 12 OF 15	
							WEIGHT:					
	NAME	SIGNATURE	DATE									
DRAWN	GR		30/01/18									
CHK'D												
APPV'D												
MFG												
Q.A												

8 7 6 5 4 3 2 1

A

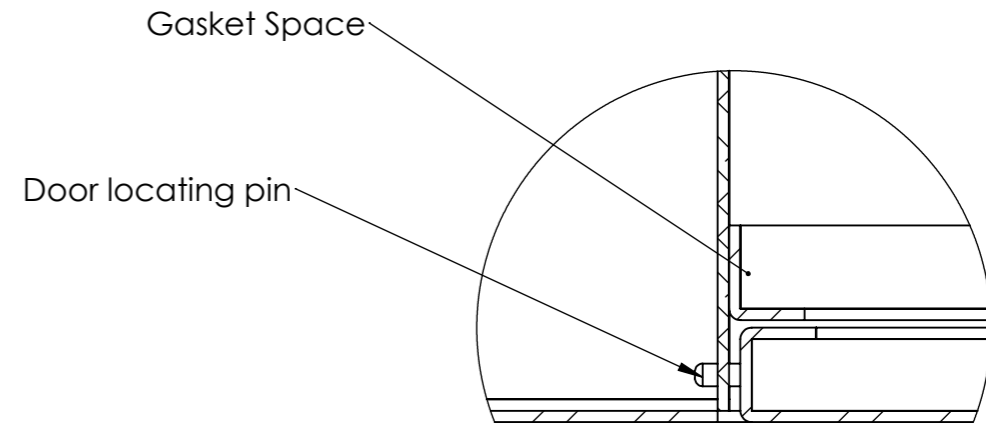
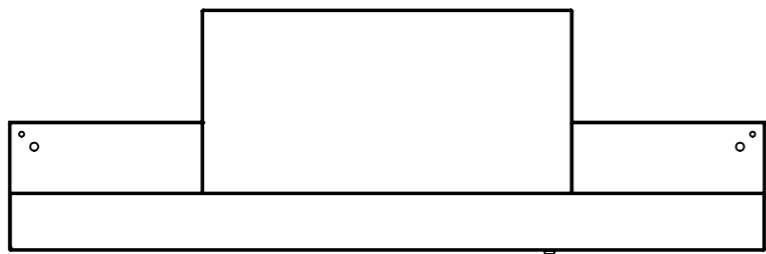
A



Isometric view of Detail AR (sheet2)  
Showing cut away for balustrade

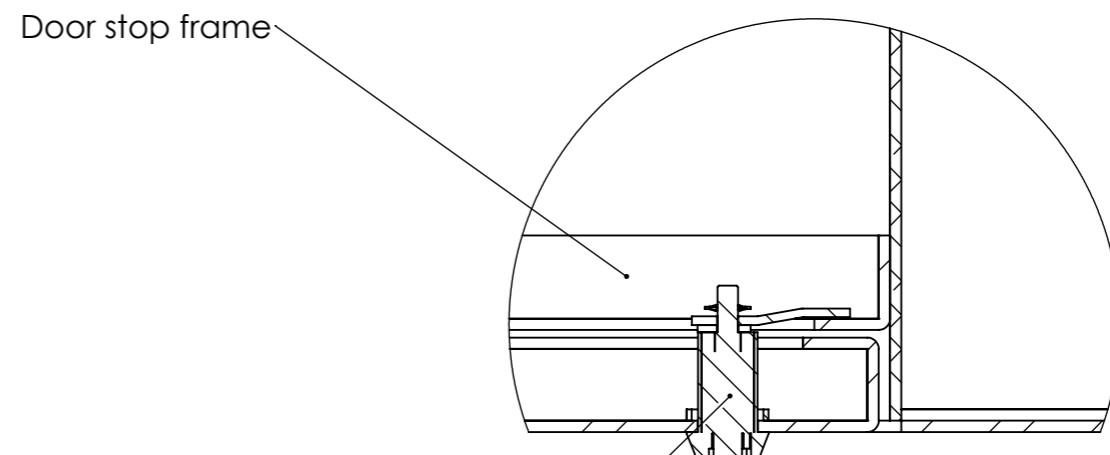
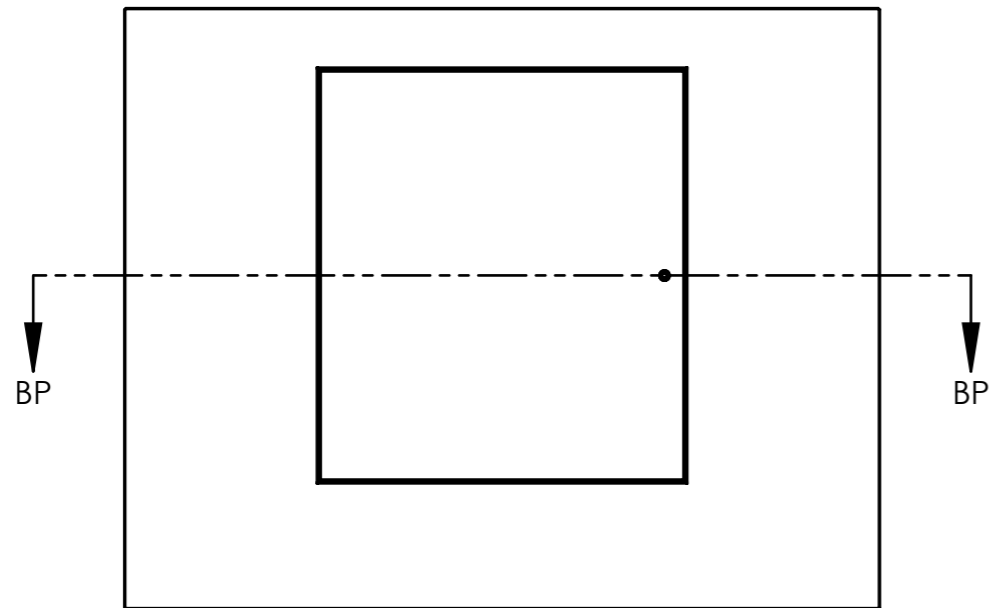
UNLESS OTHERWISE SPECIFIED: DIMENSIONS ARE IN MILLIMETERS SURFACE FINISH: TOLERANCES: LINEAR: ANGULAR:			FINISH:  Powdertech BGB 717		DEBURR AND BREAK SHARP EDGES		DO NOT SCALE DRAWING		REVISION 4				
							IOTA - 296						
							BBC Cardiff						
							DWG NO.		296-MainAssy			A3	
							MATERIAL:		3mm Zintec / 3mm Aluminium / Iroko fsc seating (tbc)			SCALE:1:150	
							WEIGHT:		SHEET 13 OF 15				
DRAWN		NAME		SIGNATURE		DATE							
CHK'D						30/01/18							
APPV'D													
MFG													
Q.A													

8 7 6 5 4 3 2 1

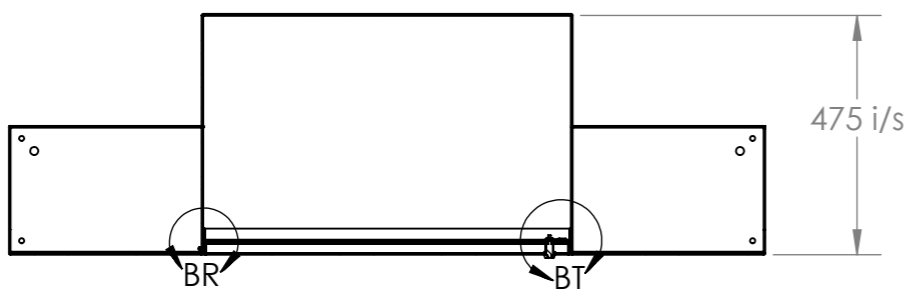


DETAIL BR  
SCALE 1 : 2

Typical door assembly construction  
and locking method



DETAIL BT  
SCALE 1 : 2



SECTION BP-BP  
SCALE 1 : 15

UNLESS OTHERWISE SPECIFIED: DIMENSIONS ARE IN MILLIMETERS			FINISH: Powdertech BGB 717		DEBURR AND BREAK SHARP EDGES		DO NOT SCALE DRAWING		REVISION 4		
SURFACE FINISH: TOLERANCES: LINEAR: ANGULAR:							IOTA - 296				
									BBC Cardiff		
DRAWN GR		SIGNATURE		DATE 30/01/18				TITLE: 296-MainAssy		A3	
CHK'D											
APPV'D								DWG NO.			
MFG						MATERIAL: 3mm Zintec / 3mm Aluminium / Iroko fsc seating (tbc)		296-MainAssy			
Q.A						WEIGHT:		SCALE:1:150		SHEET 14 OF 15	

8 7 6 5 4 3 2 1

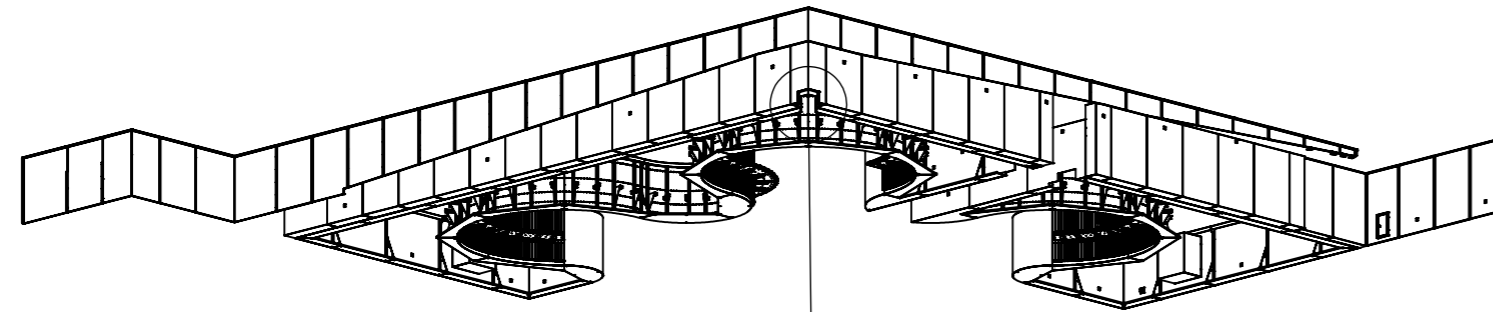
F  
E  
D  
C  
B  
A

F  
E  
D  
C  
B  
A

8 7 6 5 4 3 2 1

F

F



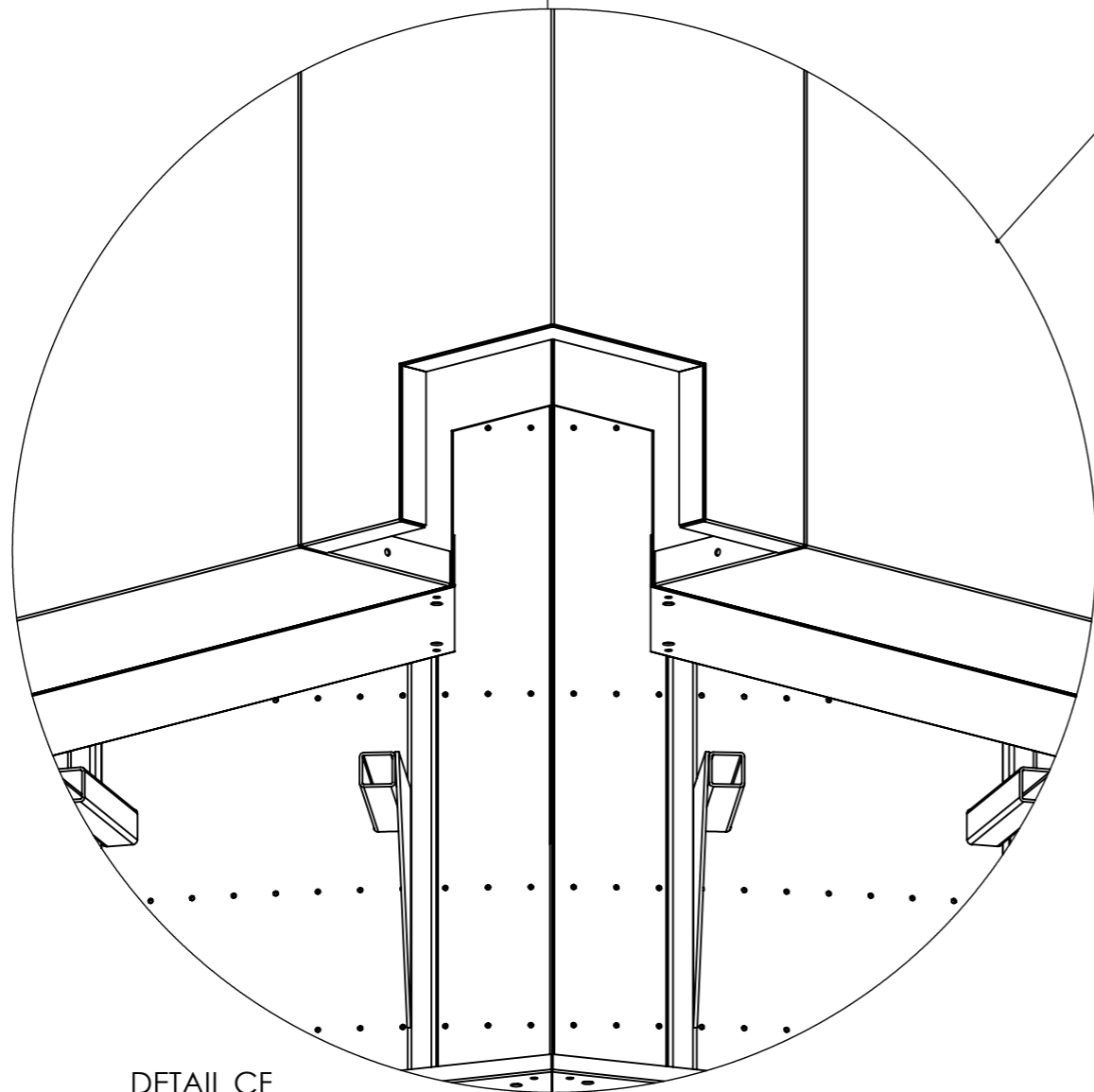
E

E

D

D

Service access now through both inner and outer walls



C

C

B

B

DETAIL CF  
SCALE 1 : 10

A

A

8 7 6 5 4 3 2 1

UNLESS OTHERWISE SPECIFIED: DIMENSIONS ARE IN MILLIMETERS		FINISH: Powdertech BGB 717		DEBURR AND BREAK SHARP EDGES		DO NOT SCALE DRAWING		REVISION 4	
SURFACE FINISH:						TITLE: <b>IOTA - 296</b> <b>BBC Cardiff</b>			
TOLERANCES: LINEAR: ANGULAR:									
DRAWN	GR	SIGNATURE	DATE 30/01/18			DWG NO. <b>296-MainAssy</b>		A3	
CHK'D						SCALE:1:150		SHEET 15 OF 15	
APPV'D						MATERIAL: 3mm Zintec / 3mm Aluminium / Iroko fsc seating (tbc)			
MFG						WEIGHT:			
Q.A									