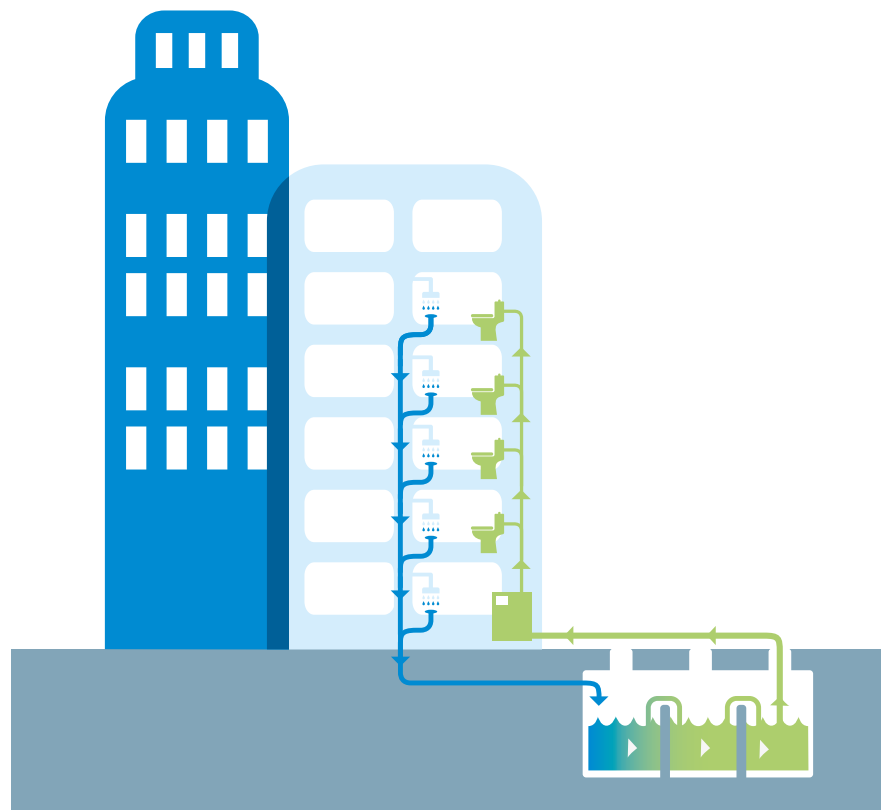


## SDS GWOD

Greywater On Demand System

**SDS GWOD is a fully automated system which delivers a consistent supply of treated greywater to meet a site's required daily volume.**

- *Smart design including IoT-ready interface*
- *Max production flow up to 12m<sup>3</sup>/hour*
- *Automated function*
- *Mains water back-up system*
- *Adaptable to changing greywater demand volumes*
- *Optional distribution pumping*
- *Volt-free output*
- *Meets BS8525 requirements*



SDS GWOD operates on a fast treatment principle to meet demand quickly and reduce the need for large water storage tanks.

SDS GWOD uses a hollow fibre ultrafiltration membrane, incorporating an automatic backwash process, to ensure the highest level of water quality.

Features	Benefits
Reduced storage needs compared to batch systems.	Ideal for builds with spatial restrictions.
Compatible with above- or below- ground installations.	Provides flexible usage.
High efficiency disc filtration removes all greywater particulates >20 microns.	Extends Ultra Filtration membrane life.
Integral pressure monitoring and self-clean cycle.	Ensures system operation is uninterrupted between service visits.
Optional intelligent chlorine dosing.	Ensures chlorine levels within treated greywater are safe and comparable to mains water.
Can be partnered with SDS-supplied water tanks.	Back-up mains water supply ensures seamless water delivery.
Conforms to Water Supplies (Water Fittings) Regulations (when partnered with SDS-supplied tanks).	Provides legislative compliance.
Water meter and remote production monitoring as standard.	Provides client access to accurate greywater production, mains water usage and savings information 24/7.
Optional IoT / real time control via GSM signal.	Linked to a SDS SYMBiotIC™ web-based client portal for viewing of data and report facility.
Variable time control for operation.	Perfect for variable demand situations and shut-down periods such as over weekends and holidays.
Variable speed pump available.	Specified bespoke to each application.

SPECIFICATIONS	GWOD 1U2	GWOD 2U4	GWOD 3U6	GWOD 4U8	GWOD 6U12
Maximum flow rate (m <sup>3</sup> /h)	2	4	6	8	12
Motor output (kW)	4.66	5.26	7.51	9.06	10.06
Power	1 x 3 phase 400v, 32A				
Width (mm)*	2500	3000	3500	4000	2500
Height (mm)*	2300	2300	2300	2300	2300
Depth (mm)*	800	800	800	800	1500
Empty weight (kg)	607	666	779	867	890
Greywater inlet connection	1 ¼" (adjustable)				
Mains water inlet connection	1 ½" (adjustable)				
Outlet connection	1 ½" (adjustable)				
Overflow connection	2" (adjustable)				
Remote monitoring	Production monitoring via GSM (optional extra)				
Noise	95dbL @ 1 metre (1 min/hour) (option to reduce to 45db)				
Chemical additive	Sodium hypochlorite				
Warranty	1 year parts and labour 5 year fully managed parts, maintenance and labour (optional)				

\*Excludes clearances, exact dimensions provided on order

GWOD DS/0719