

Weholite Manholes

Weholite manholes are flagship products that truly represent the very best of off-site build.

The off-site build route provides enhanced value when the whole project cost and the benefits that these products can bring, such as superior quality, programme reductions, consistency and sustainability, are taken into account.

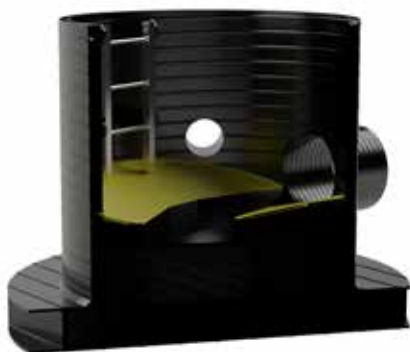
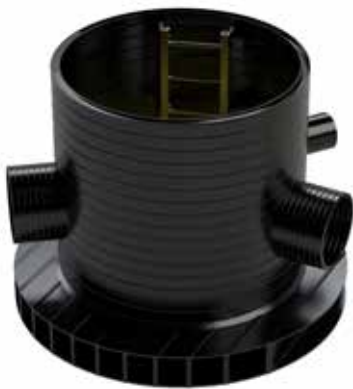
- *Wide range of sizes*
- *Light weight*
- *Resistant to H₂S*
- *Abrasion resistant*
- *Anti-slip benching*
- *Lifting points*
- *Multiple orientations*
- *Suitable for immediate use*



The factory-built environment of off-site build and modular technology ensures that the inherent and residual risks, in terms of cost, efficiency, health & safety and environmental aspects, borne of the complexity of traditional construction processes, are avoided.

Weholite Modular has attained certification for DWI Regulation 31 Reference no DWI 56.4.513 "Approved for use in public water supplies" and is WRAS-approved.

Features	Benefits
Available in sizes from 900mm to 3500mm.	Huge choice of sizes available sufficient for almost all applications.
Value engineered for each project.	Provides bespoke solution.
Light weight.	Less transportation and installation labour required.
Manholes and chambers ready to use immediately.	Enables super-fast connection and operation.
Designed to resist groundwater pressures.	Fully functional in difficult locations.
Fully air tested.	100% water-tight.
Available in any orientation.	Meets any installation requirement.
Yellow anti-slip benching factory-fitted.	Ensures safe movement within the manhole.
Totally resistant to hydrogen sulphide (H ₂ S).	Can be used in harsh conditions.
HDPE has the best abrasion resistance.	Ensures better flow properties. Very low maintenance required.
No concrete surround required.	Saves time and cost and improves carbon footprint.
No rocker pipes needed.	Delivers savings on programme.
Fully tested lifting points.	Facilitates quick delivery and easy installation.
BBA HAPAS certification.	Approved for use by Highways Authorities in England, Wales, Scotland and Northern Ireland.



WM DS/0620