



COMPANY:  
**NFT Distribution**

LOCATION:  
**Tilbury Docks Warehouse**

OVERVIEW:  
**Partitioning of chilled warehouse due to temperature control (two week timescale)**

SOLUTION:  
**Flexiwall® 21m (h) x 90m (w)  
Flexistrip® Door**

#### WHAT DID THEY SAY:

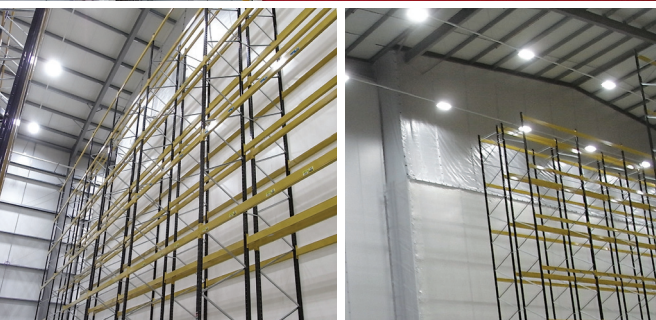
"As a high volume rapid throughput chilled logistics business, we have always used fixed wall panels to construct our temperature controlled chambers.

We have always been slightly dubious about the effectiveness and reliability of curtains in the past, but in this instance had no option but to trial this solution because of the challenging timescale.

Westgate were able to respond to our unique demands and quickly developed and delivered a solution which is working beyond our expectations. We will be talking to Westgate again about other projects in the future"







Westgate was called in by NFT Distribution to create a partition in a new build chilled warehouse at Tilbury Docks.

This requirement had been driven by a **new contract that required part of the existing warehouse to operate at a colder temperature**. The temperature of the primary area of the warehouse was 2 degrees, they needed to create another area within the warehouse with a deep chill temperature of -2 degrees.

The task in itself is something that Westgate are used to and have implemented many times in the past. The special requirement on this job was that NFT Distribution needed to have the partition in place within two weeks to meet production demands.

After a short spell of consultation and design, Westgate immediately began the task of installing a **Flexiwall® partition** that was 21 metres high and 90 metres wide. The Flexiwall was designed in such a manner that it can be extended and added to at a later point in time if the company's needs change.

The partitions lower section was created with the intention of giving a corporate look, similar to the corporate colours of NFT Distribution with the use of red fabric. Also installed was a **Flexistrip® PVC strip door**, which provides easy and hassle free access for forklifts.

The primary benefit to the client since the new partition was installed has been the ability to control the temperature as requested and fulfil the requirements of the new contract. Although **the products flexibility, quick non-disruptive installation and cost effectiveness were highly advantageous**, the speed at which Westgate were able to turn this project around was a key factor in NFT working with Westgate.

Visit our website to learn more about **Flexiwall** and **Flexistrip**