



regal

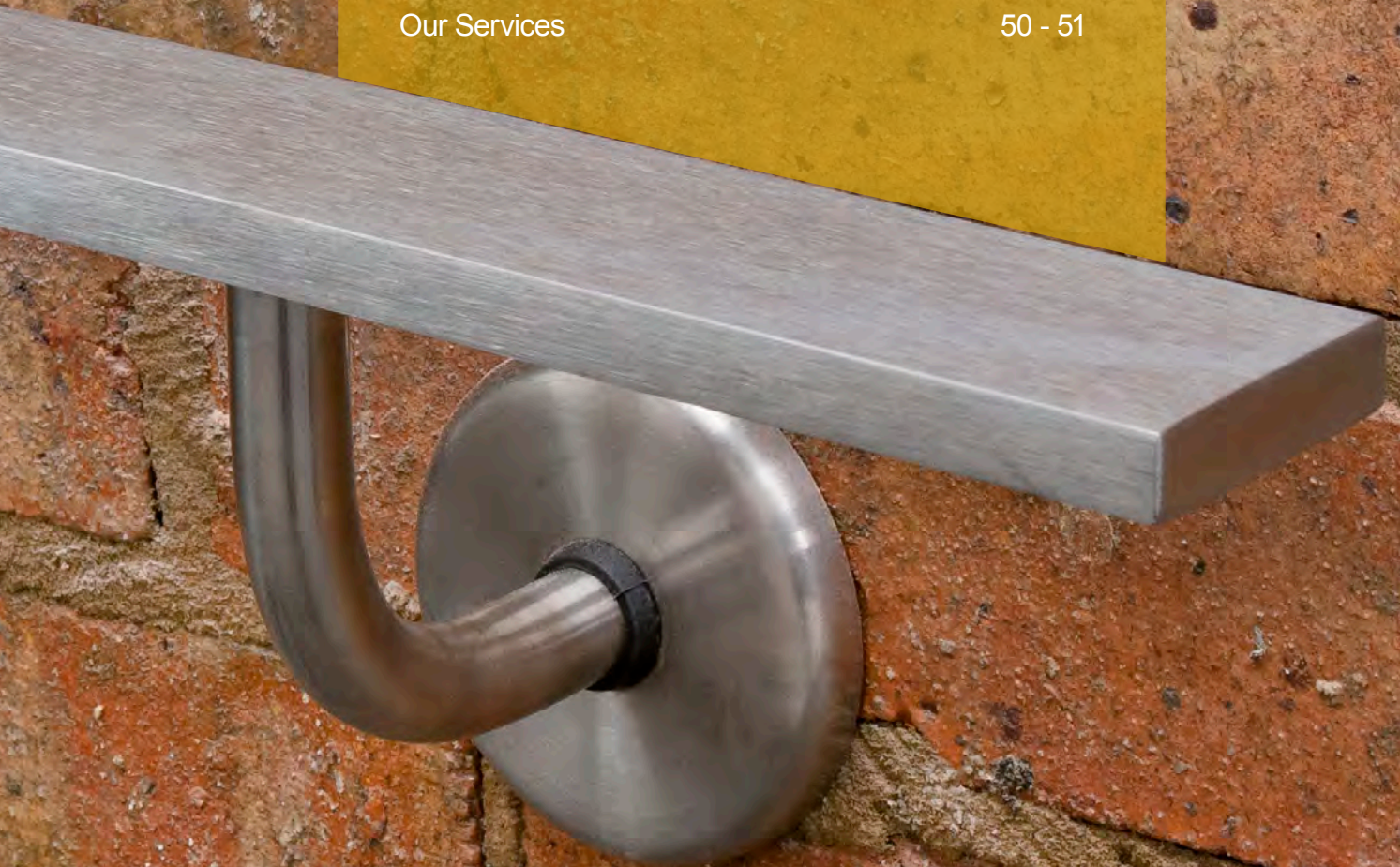
BALUSTRADES

Concept to completion... **...one service**



Contents

Welcome	4 - 5
Balustrade Specifications	6 - 7
Onyx® - Stainless Steel System	8 - 13
Opal® - Polyester Powder Coated System	14 - 17
Naturex® - Polyester Powder Coated System	18 - 19
Jasper® - Flat Profile System	20 - 23
Crystal® - Structural Glass System	24 - 37
Natura® - Hardwood Handrail System	38 - 41
Architectural	42 - 43
Staircases	44 - 47
Canopies	48 - 49
Our Services	50 - 51







Welcome

Welcome to Regal Balustrades Ltd, specialists in the design and manufacture of bespoke balustrades, canopies, staircases, and architectural metalwork.

Having been established for over 17 years, we provide our clients with contemporary, reliable, quality systems and service. Our designs are bespoke and commissioned by global corporations and small businesses alike, who have demanding requirements for aesthetics, durability and flexibility.

At Regal Balustrades Ltd we only work with the highest quality materials and components and this, coupled with our industry-leading design capabilities, ensures our clients benefit from the ultimate turnkey solution.

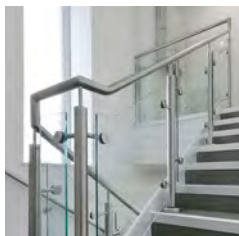
We look forward to working with you to fulfil your requirements.

Our Mission

Our mission is to produce the right product for the right application, on time, within a budget and with the highest quality service.

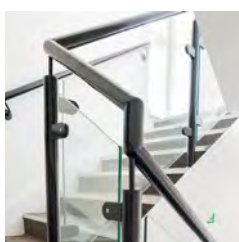


Balustrade Specifications



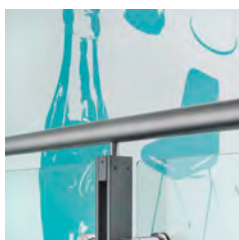
Onyx® - Stainless Steel System

The Onyx® brand has been extensively developed into a sleek and prestigious framed balustrade manufactured from tubular stainless steel. As an industry renowned product, the benefits of this bespoke system are neat detailing, seamless flows and weld-free appearance.



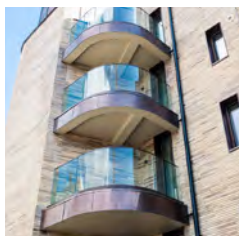
Opal® - Polyester Powder Coated System

The Opal® brand delivers an attractive, hard-wearing polyester powder coated finish, and is a perfect balance of durability, quality and value, providing a visual complement in any environment.



Naturex® - Polyester Powder Coated System

The Naturex® brand enhances the polyester powder coated system with a woodgrain effect finish.



Jasper® - Flat Profile System

The Jasper® brand offers a choice with either single or double flat balusters, available in either stainless steel or powder coated steel. Each one is individually manufactured so you can create bespoke feature shapes through either laser or water-jet cutting.



Crystal® - Structural Glass System

The Crystal® brand combines elegant minimal look with structural strength and robust performance, offering everything you could need from glass balustrade systems in one package. Suitable for internal or external application, the design has been refined through careful development based on years of expertise so that you get the perfect frameless glass balustrades system.



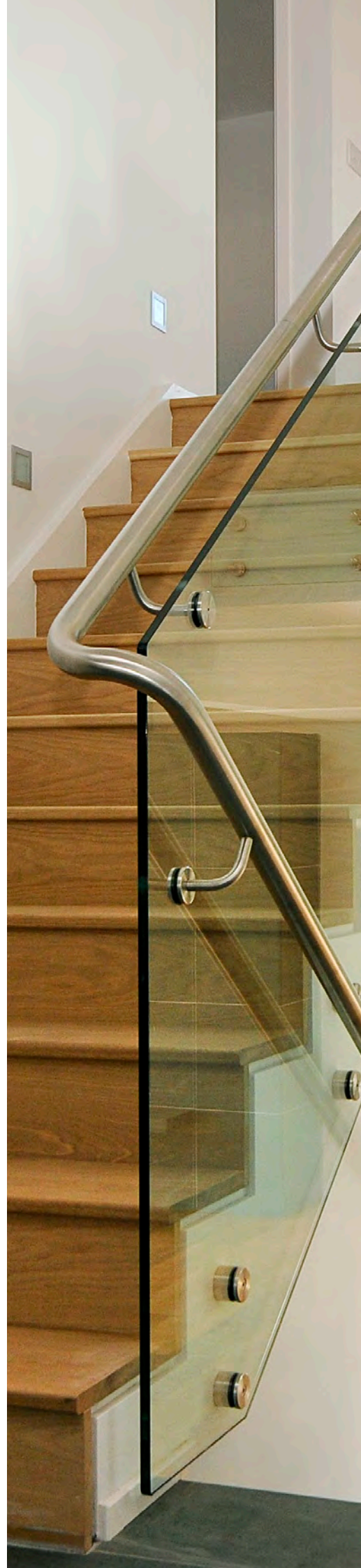
Natura® - Hardwood Handrail System

The Natura® brand uses unique high strength jointing methods within the timber handrail which means no core rail is required, dramatically improving the aesthetic impact of the range and enabling smooth, flowing corners and bends. All hardwood products are lacquered for protection and durability.



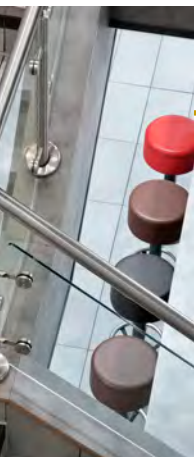
Architectural

With the flexibility to work alongside lead designers and architects, we are able to recommend and assist in the design and installation process to help create unique balustrade solutions and associated architectural metalwork packages.









McDonald's, Milton Keynes

Specification: Onyx® - Stainless Steel System

- Features:
- > 50mm dia. satin polished 304 grade stainless steel balusters and handrail
 - > 10mm clear toughened glass infill with banjo glass clamps

Hitachi Motors, Trowbridge

Specification: Onyx® - Stainless Steel System

- Features:
- > 50mm dia. satin polished 304 grade stainless steel balusters and handrail
 - > 10mm clear toughened glass infill with banjo glass clamps





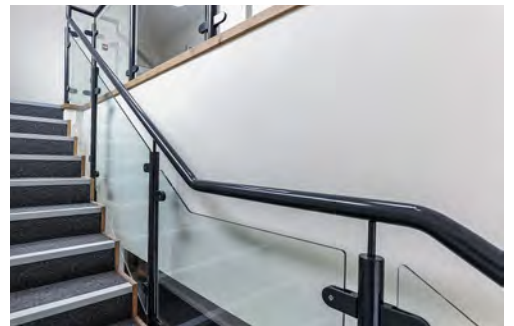




Santander Bank, Reading

Specification: Onyx® - Stainless Steel System

- Features:
- > 50mm dia. satin polished 304 grade stainless steel balusters and handrail
 - > 10mm clear toughened glass infill with banjo glass clamps



St Leonards Road, Eastbourne

Specification: Opal® - Polyester Powder Coated System

- Features:
- > 48mm dia. polyester powder coated mild steel balusters and handrail
 - > 10mm clear toughened glass infill with 'D' type glass clamps





Harrington Road, London

Specification: Opal® - Polyester Powder Coated System

- Features:
- > 48mm dia. polyester powder coated mild steel balusters and handrail
 - > 10mm clear toughened glass infill with 'D' type glass clamps



St Mary's C of E School

Specification: Naturex® - Polyester Powder Coated System

- Features:
- > 50mm dia. satin polished 304 grade stainless steel balusters
 - > 50mm dia. stainless steel offset double handrails with Naturex® woodgrain coating
 - > 10mm clear toughened glass infill with 'D' type glass clamps



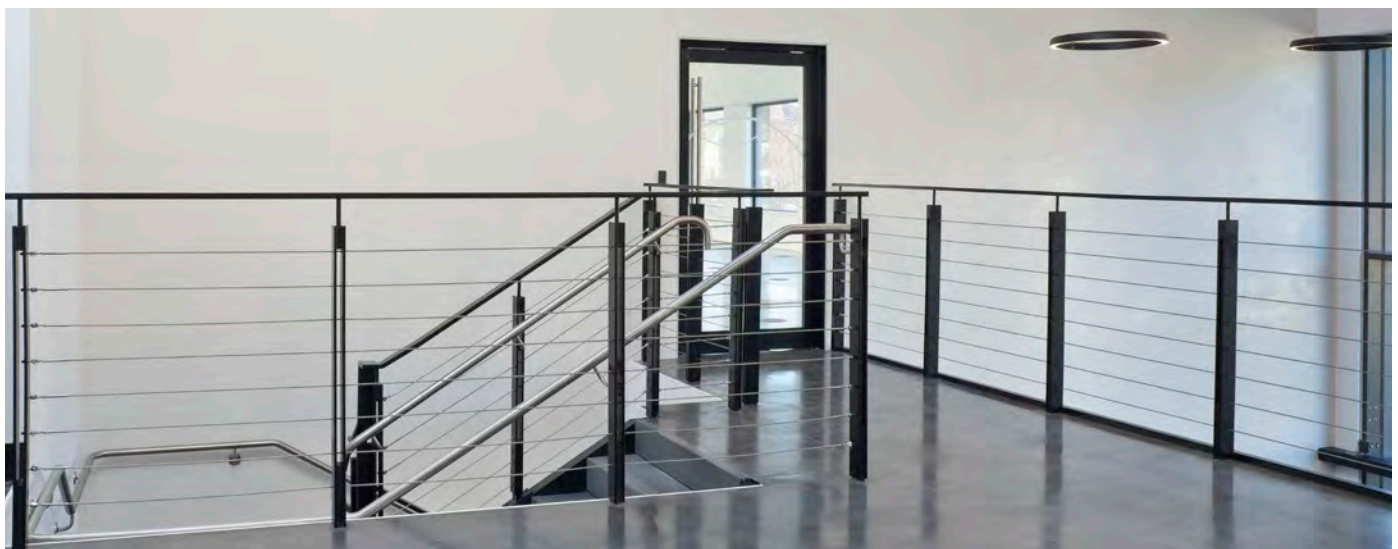
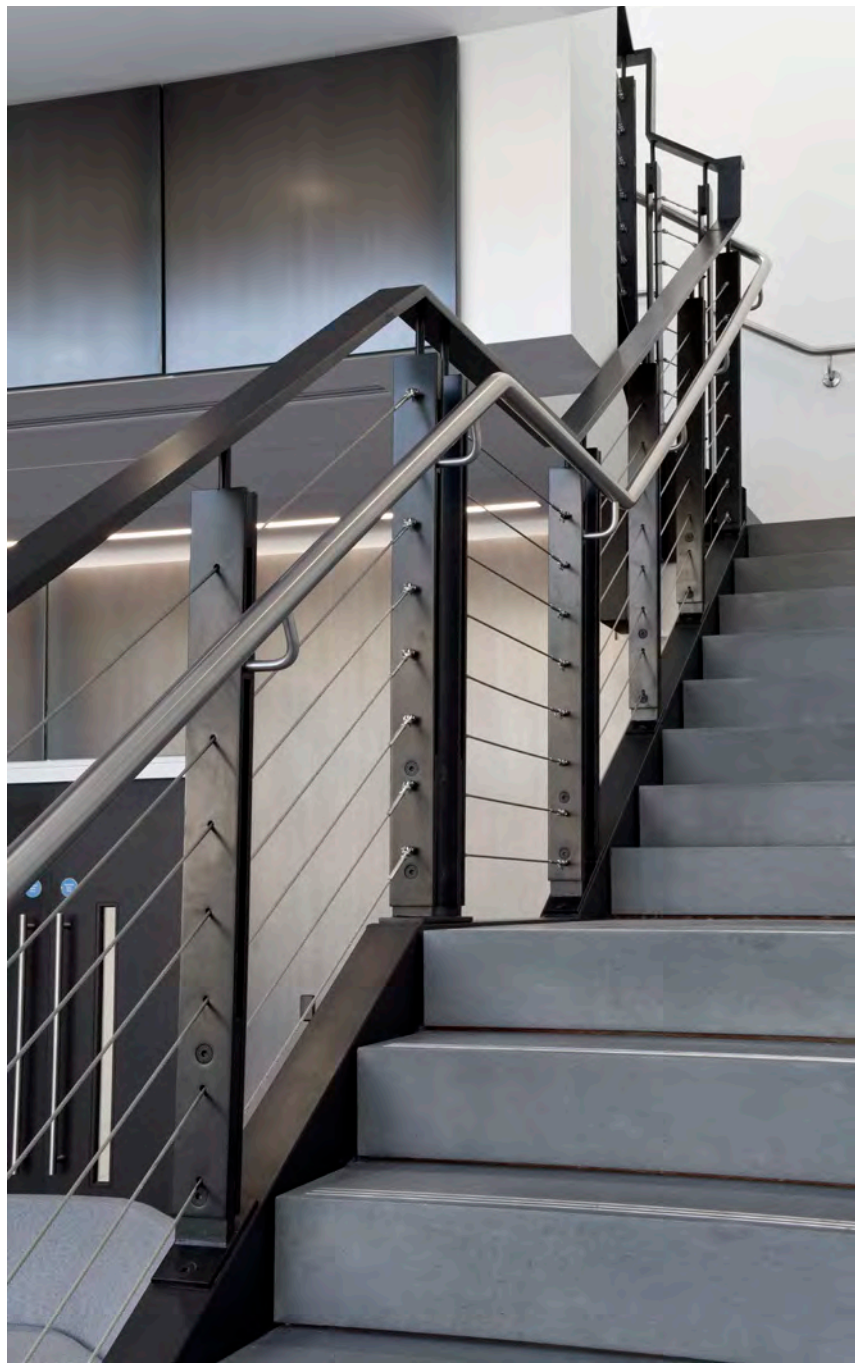


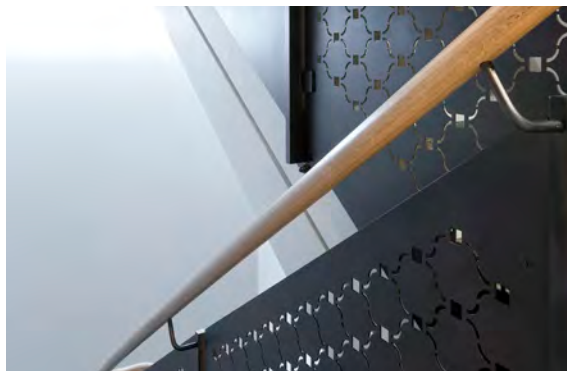


Radio House, Cambridge

Specification: Jasper® - Flat Profile System

- Features:
- > Mild steel twin flat balusters in polyester powder coated finish
 - > 42mm dia. satin polished 304 grade stainless steel handrail
 - > 5mm dia. stainless steel wire infill



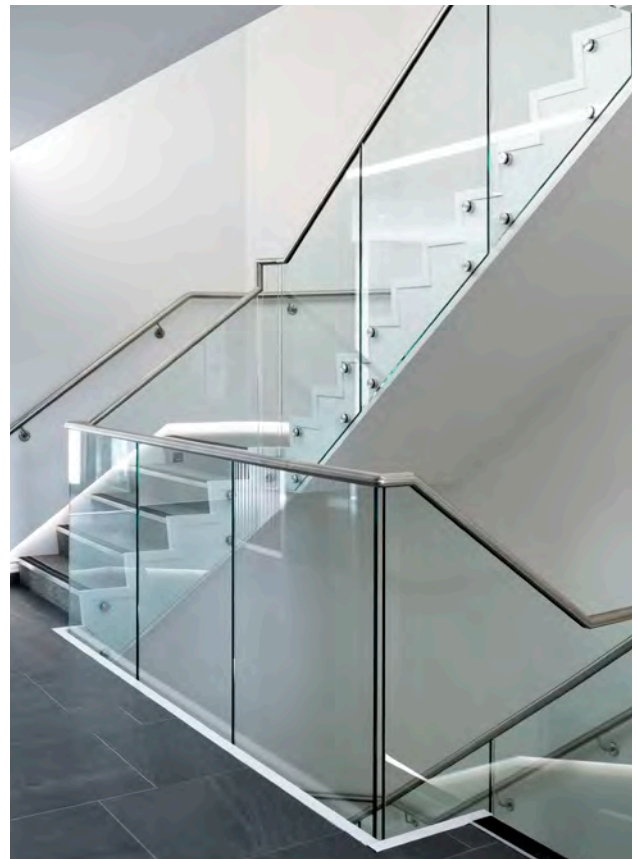
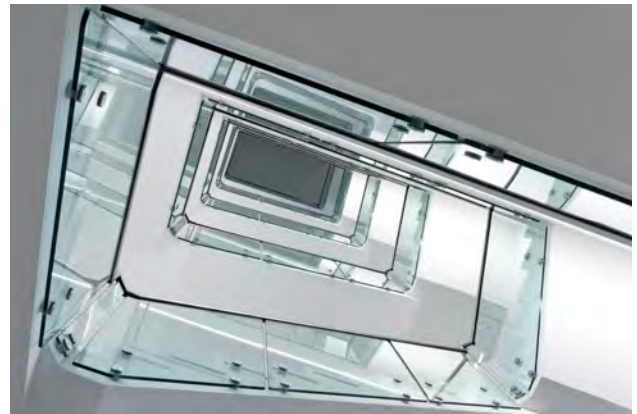
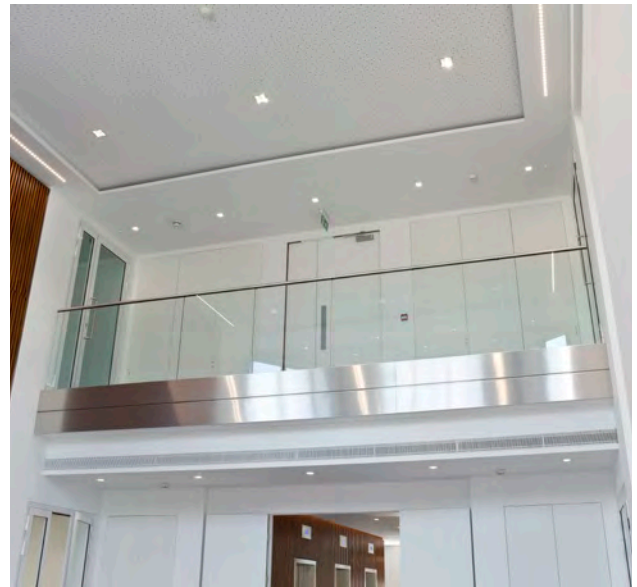




Grays Inn Apartments, London

Specification: Jasper® - Flat Profile System

- Features:
- > Mild steel single flat baluster in polyester powder coated bronze metallic
 - > Laser cut bespoke pattern mild steel infill panel polyester powder coated bronze metallic
 - > 42mm dia. Natura® hardwood offset handrail in a clear lacquer finish



Commercial Offices, Reading

Specification: Crystal® - Structural Glass System

- Features:
- > 15mm clear toughened structural glass with two point slim line stand off bosses in satin polished stainless steel
 - > 48mm dia. slotted satin polished 304 grade stainless steel handrail



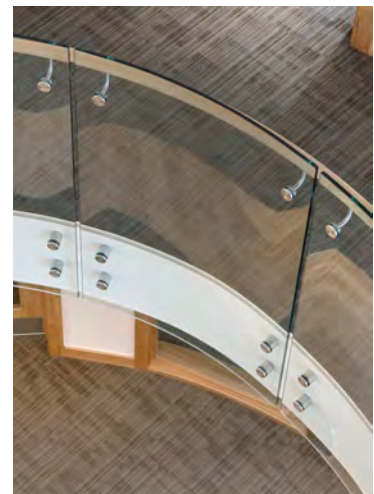
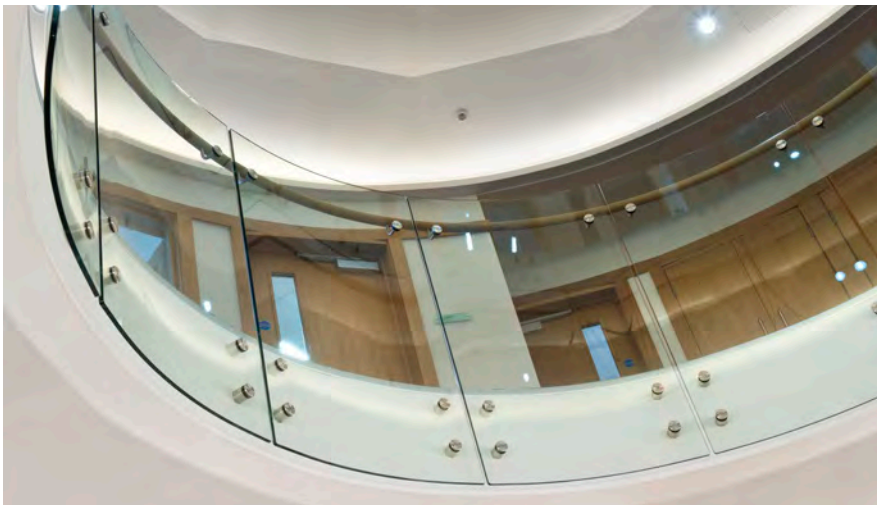




New Broad Street, London

Specification: Crystal® - Structural Glass System

- Features:
- > 15mm clear toughened structural glass with concealed base fixing channel
 - > Flat bar satin polished 304 grade stainless steel offset handrail



Woolf Institute, Cambridge

Specification: Crystal® - Structural Glass System

- Features:
- > 15mm clear toughened curved structural glass with two point slim line stand off bosses in satin polished stainless steel
 - > 50mm dia. Natura® hardwood offset curved handrail in a clear lacquer finish complete with satin polished stainless steel brackets



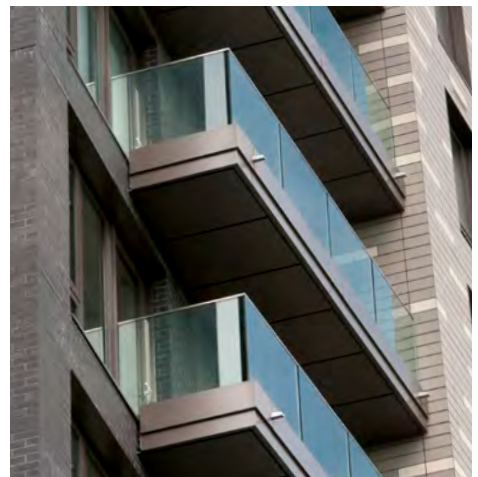


New Art Centre, Southampton

Specification: Crystal® - Structural Glass System

Features:

- > 21.5mm clear toughened and laminated structural glass with aluminium base fixing channel
- > Small section top capping in 316 grade satin polished stainless steel
- > Polyester powder coated base cover pressings
- > Base channel connected to first fix galvanised mild steel continuous support bracket concealed below finished floor level







Commercial Offices, Marlow

Specification: Crystal® - Structural Glass System

- Features:
- > 15mm clear toughened structural glass with a combination of base fixing channel and two point slim line stand off bosses in satin polished stainless steel
 - > 48mm dia. slotted satin polished 304 grade stainless steel handrail



Stanbrook Abbey, Worcester



Specification: Crystal® - Structural Glass System

Features:

- > 25.5mm clear toughened and laminated structural glass with a SGP interlayer
- > Concealed aluminium base fixing channel
- > Small section top capping in 316 grade satin polished stainless steel



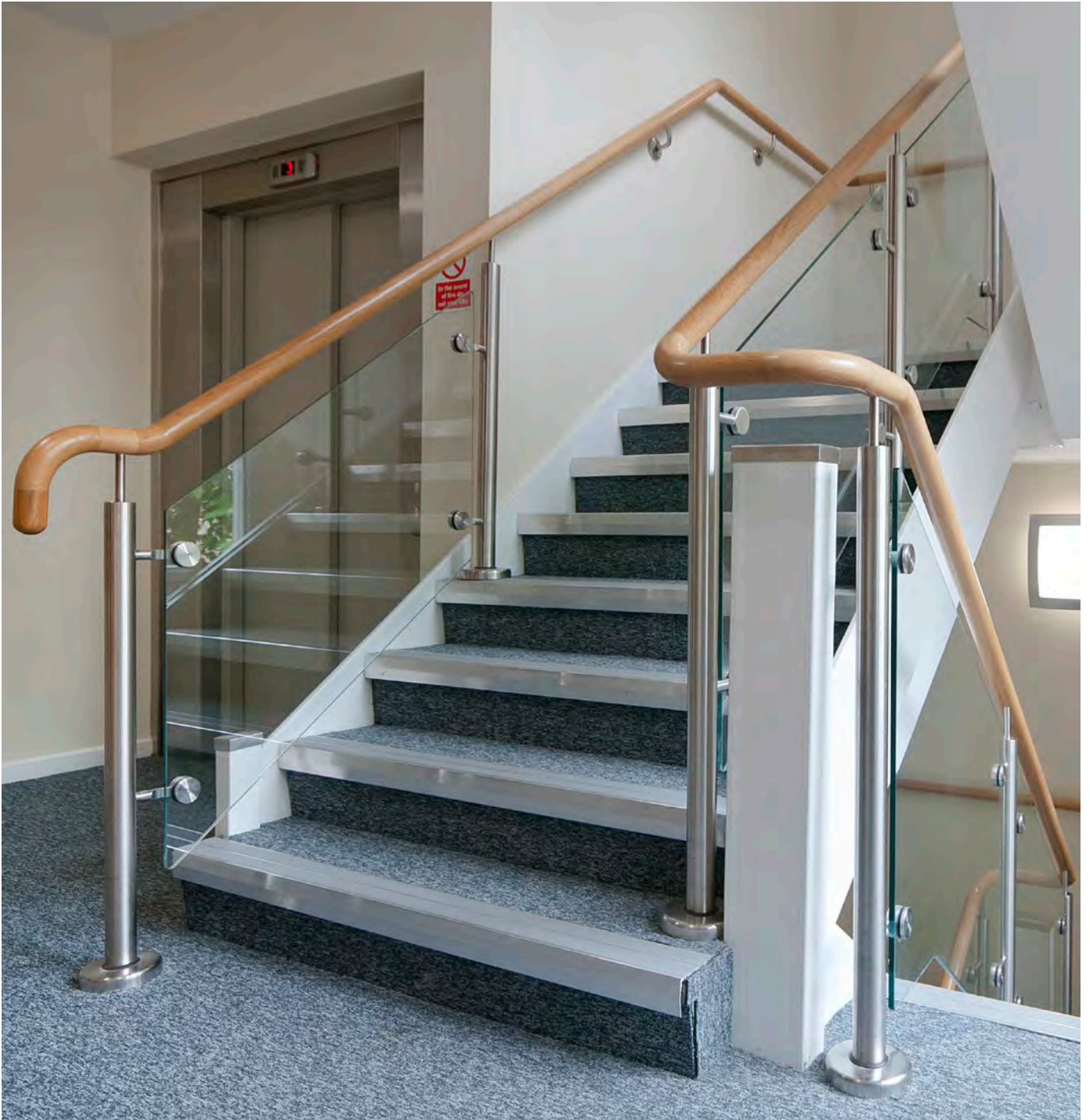


Harrington Road, London

Specification:
**Crystal® - Structural
Glass System**

Features:

- > Combination of 21.5mm clear curved and straight laminated structural glass with aluminium base fixing channel
- > Small section top capping polyester powder coated bronze metallic
- > Base channel connected to first fix galvanised mild steel continuous support bracket concealed below finished floor level



Grosvenor House, Bristol

Specification: Natura® - Hardwood Handrail System

- Features:
- > 50mm dia. Natura® hardwood handrail in a clear lacquer finish
 - > 50mm dia. satin polished 304 grade stainless steel balusters
 - > 10mm clear toughened glass infill with banjo glass clamps



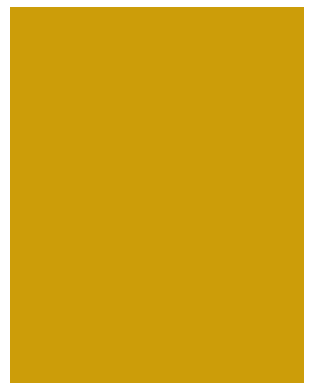
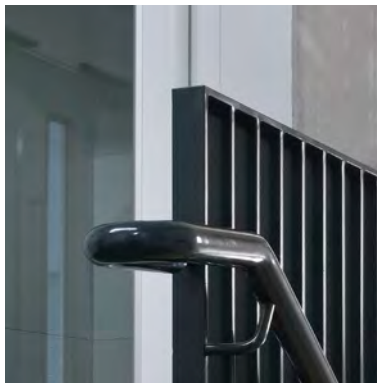
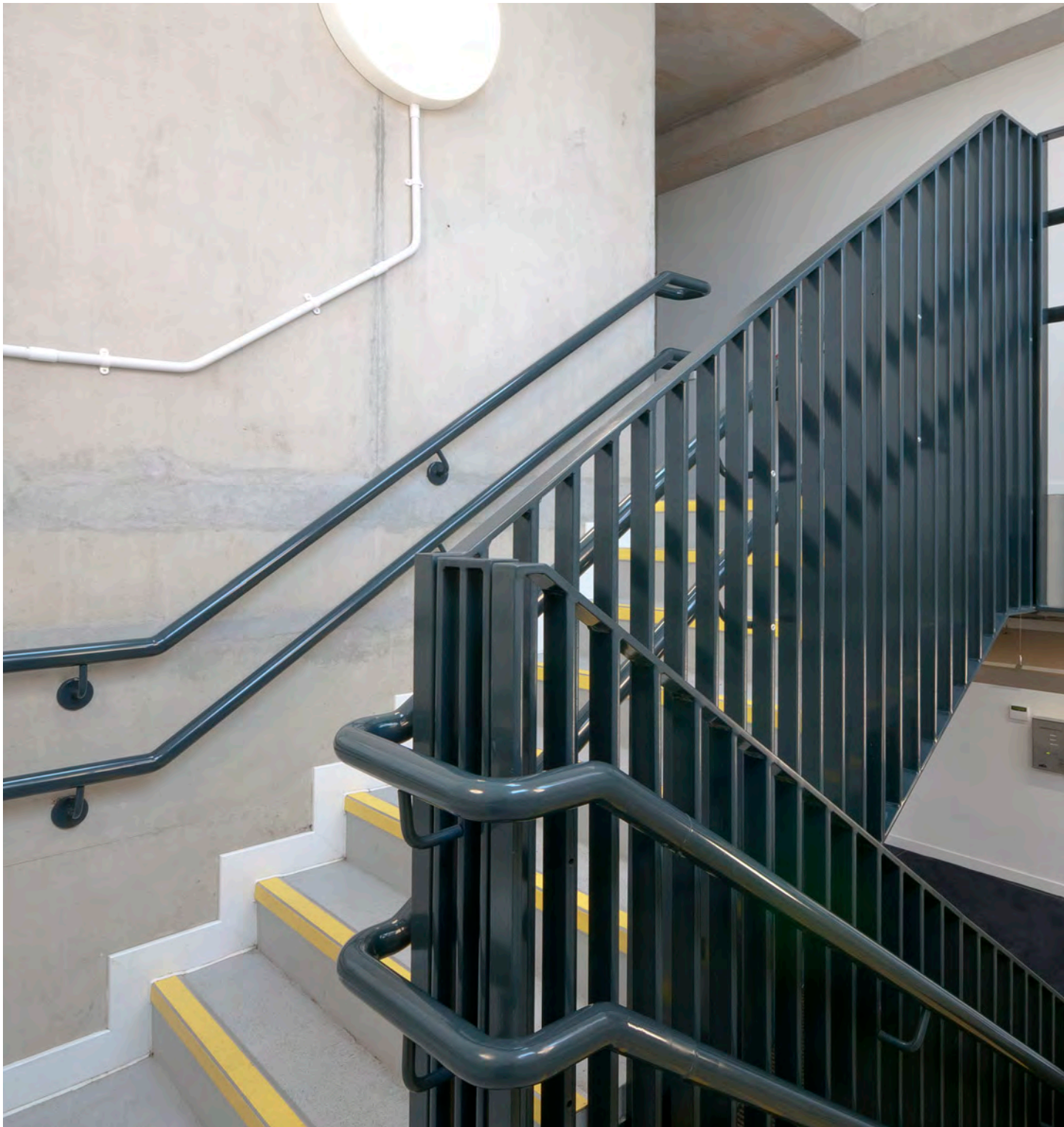


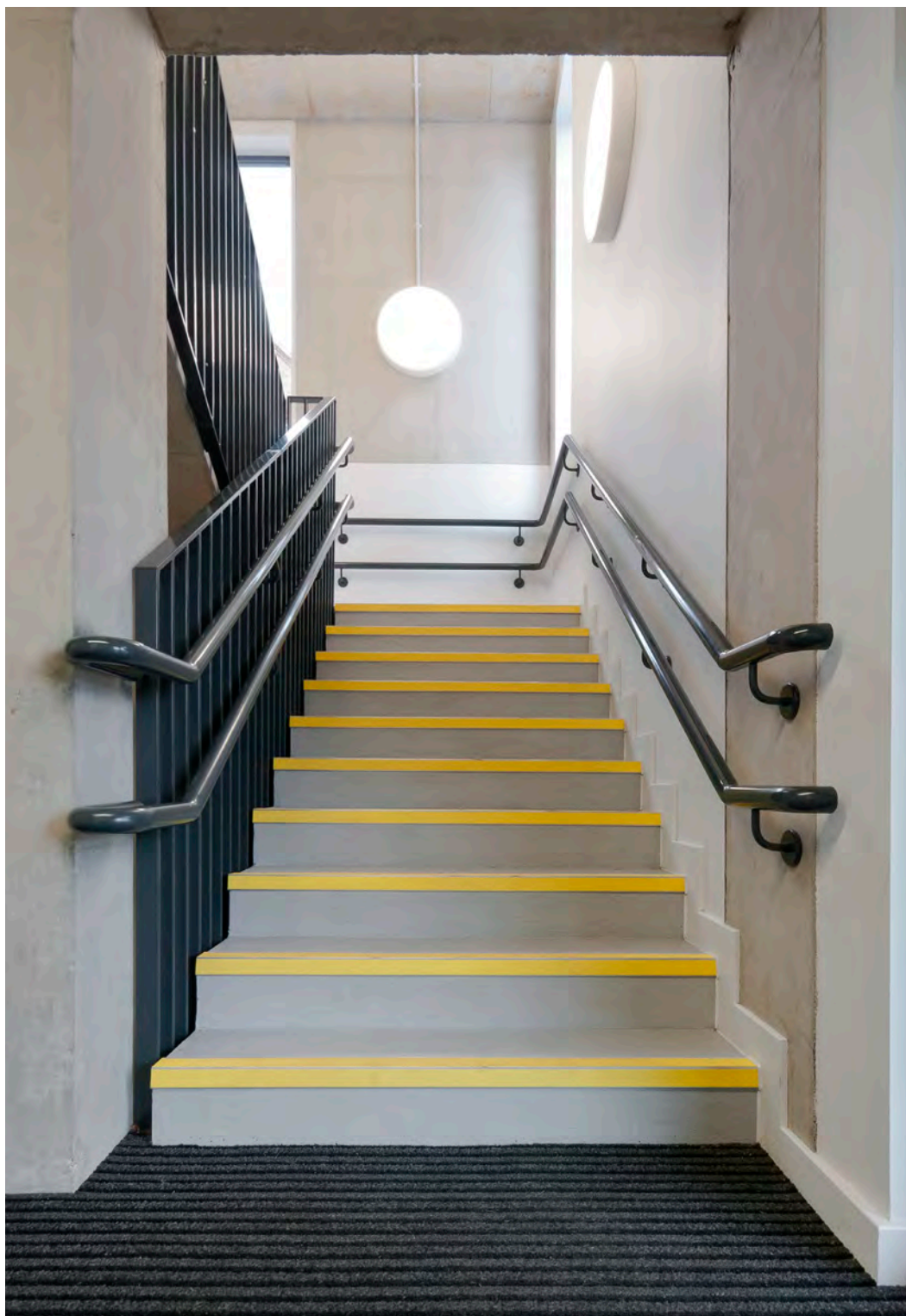


Weston Street, London

Specification: Natura® - Hardwood Handrail System

- Features:
- > 50mm thick birch plywood balustrade panels in a clear lacquer finish
 - > Offset 42mm dia. Natura® hardwood handrail in a clear lacquer finish
 - > Bronze metal antique finished brackets





Dundonald School, London

Architectural

- Features:
- > Mild steel vertical flat bar panels in polyester powder coated finish
 - > 48mm dia. mild steel offset double handrail in polyester powder coated finish

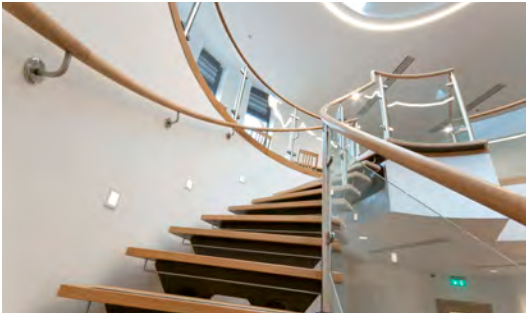




Hitachi Motors, Trowbridge

Staircases

- Features:
- > 12mm thick laser cut mild steel flat plate stringers
 - > Folder tray treads with screed infill
 - > Associated support steelwork for landings
 - > Concealed balustrade fixing below screed



Woolf Institute, Cambridge

Staircases

- Features:
- > 140mm dia. CHS double helical mild steel spine with associated tread plates and top landing support steelwork
 - > European oak hardwood treads with non-slip nosing inserts complete with satin polished stainless steel tread riser bars
 - > Balustrade fixed to the stair treads with concealed fixing detail







Residential, Esher

Canopies

- Features:
- > Galvanised and polyester powder coated profiled canopy support arms
 - > Polyester powder coated aluminium glass clamping channel
 - > 13.5mm clear toughened and laminated glass
 - > Two tone polyester powder coated aluminium front fascia trims incorporating LED lighting recess

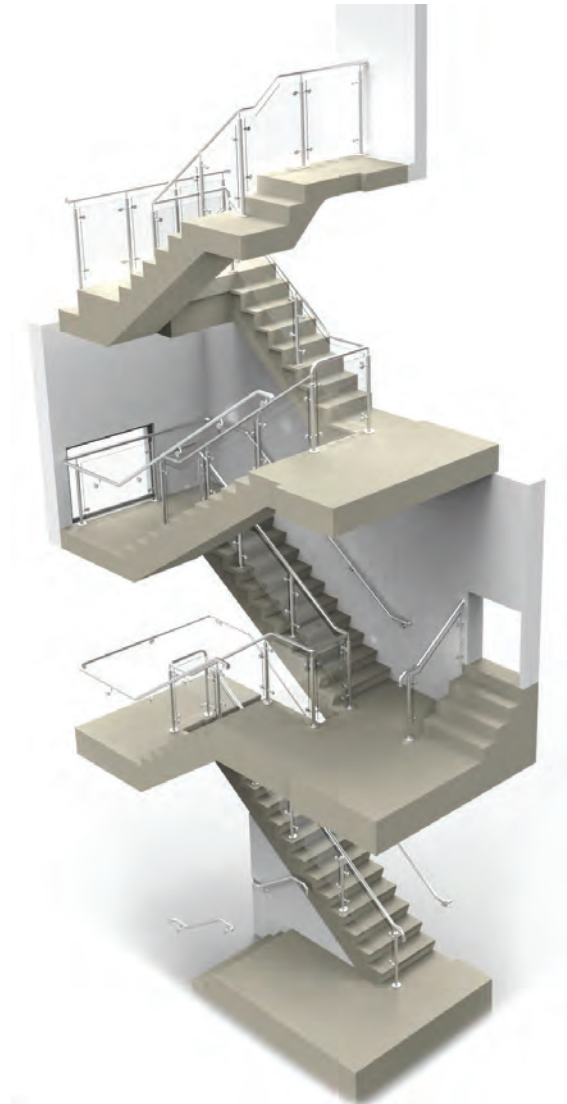
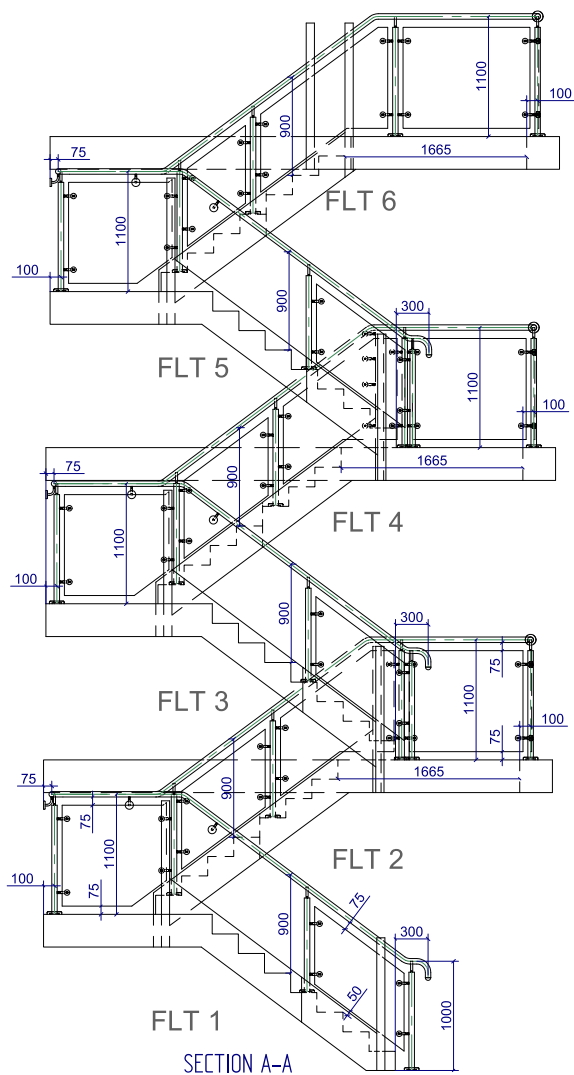




Our Services

Working closely with architects, designers and building professionals, Regal Balustrades Ltd offers assistance at every step of the way, working on the principle of “concept to completion”. This level of service and support sets Regal Balustrades Ltd apart, offering something unique in the sector, and makes a real difference to our clients.





At Regal Balustrades Ltd we offer the complete package. Working with you from the initial design stage all the way through to manufacturing, installation and aftercare.

With over 17 years of dedication and commitment to our mission statement, quality is assured through our attention to detail.

Our nationwide comprehensive service includes:

- 3D concept visual designs
- Detailed site surveys
- CAD drawings
- In house production facility
- Installation by our approved site teams



Concept to completion... **...one service**



regal

BALUSTRADES

Unit 7, Eagles Wood Business Park, Woodlands Lane,
Bradley Stoke, Bristol, BS32 4EU

T: (0117) 935 3888

E: sales@regalbalustrades.co.uk

E: estimating@regalbalustrades.co.uk

W: www.regalbalustrades.co.uk

Registered in England Company Registration No. 11321231