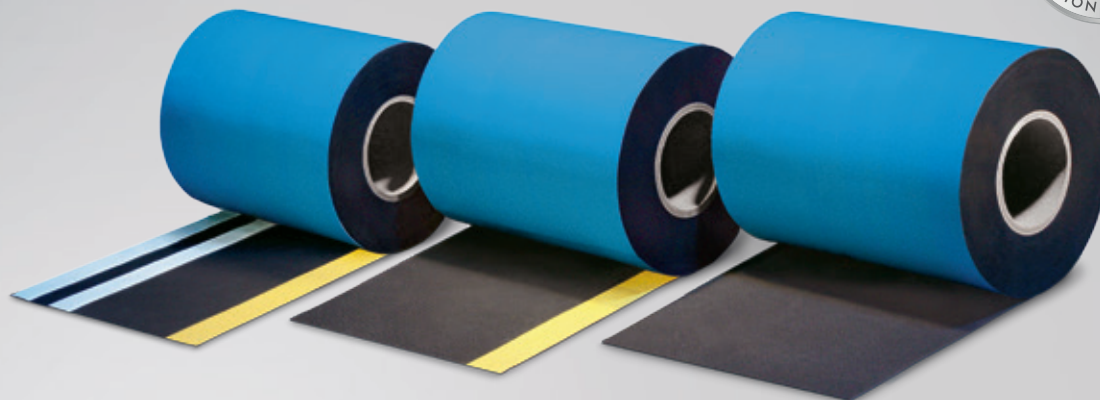


PRODUCT DATA SHEET

ISO-CONNECT OUTSIDE EPDM



PRODUCT DESCRIPTION

ISO-CONNECT OUTSIDE EPDM is an elastomeric sealing band which serves as an external sealant on windows and facades in accordance with DIN 18195. ISO-CONNECT OUTSIDE EPDM is particularly suitable for external facade and window sealing projects. It has a thickness of either 0.8mm or 1.2mm, and conforms with DIN 7864 T1.

APPLICATION

ISO-CONNECT OUTSIDE EPDM is a special outer sealant, designed in accordance with DIN 18195, for building structures and used as the complete perimeter seal and / or the base seal for doorways and floor fitting windows. In addition it is exceptionally suitable for the external sealing of structural building facades, making ISO-CONNECT OUTSIDE EPDM a versatile and proven sealing product compatible with all major building materials.

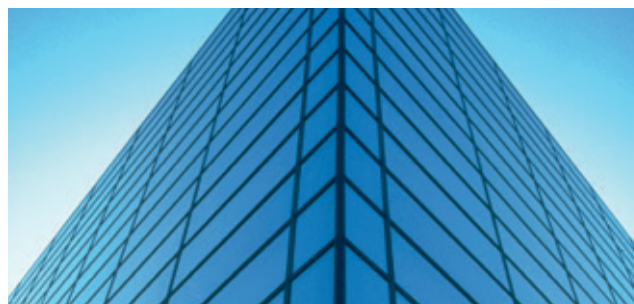
FINISHES

- Finish A: without self-adhesive
- Finish B: SK
single side self-adhesive with 1 self-adhesive strip
- Finish C: BT
single side self-adhesive with 1 or 2 butyl-adhesive strips, subject to product width
- Finish D: SK-BT
single side self-adhesive with 1 self-adhesive strip and 1 or 2 butyl-adhesive strips, subject to product width

PRODUCT ADVANTAGES

- permanent outer sealant
- high elasticity – compensates for joint movement
- extreme temperature and weather resistant
- bitumen compatible
- complies with EnEV requirements and the recommendations of the RAL “installation guide”
- 10 Year Function Warranty*

* On the conditions of the manufacturer (available on request).



ISO-CONNECT OUTSIDE EPDM

Technical data	Standard	Classification
Material description		synthetic caoutchouc on EPDM basis
Colour		black
Building material class	DIN EN 13501	E
Bitumen compatible	DIN 7864 T1	bitumen compatible
UV light stability	DIN 7864 T1	UV resistant
Ozone resistance	DIN 7864 T1	ozone resistant
Water vapour diffusion resistance μ	DIN EN 1931	$\approx 32,000$
Material thickness		0.8 mm and 1.2 mm
Elongation at break	DIN 53504	$\geq 300\%$
Tensile strength	DIN 53504	≥ 6.5 mPa
Tear growth resistance	DIN 53504	≥ 25 kN/m
Temperature stability range		-30°C to +100°C
Handling temperature		+5°C to +35°C
Dimension tolerance	DIN 7715 T5 P3	requirements fulfilled
Storage temperature		+1°C to +25°C
Shelf life		unlimited (EPDM), finishes with adhesive strips 12 months, dry and in original packing

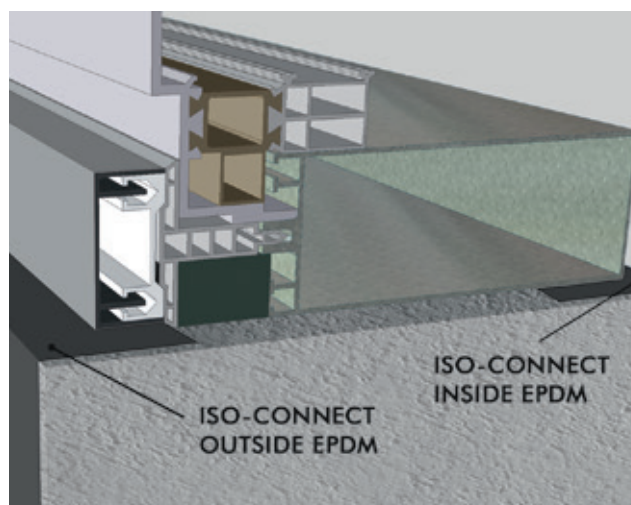
PREPARATION

Unroll ISO-CONNECT OUTSIDE EPDM elastomer sealing band and cut to the required length. The surface must be clean, dry and free from solvents, grease, dust, oil and other anti-adhesive substances.

DIRECTIONS FOR USE

To generate an air tight seal, bond one edge of the band with a gunnable solvent free adhesive such as ISO-TOP FLEX-ADHESIVE XP and fix the other edge with mechanical fixings, e.g. clamps or components of the window system as described in DIN 18195. Alternatively, finish B and D are supplied with an acrylic adhesive strip to assist attaching the end to the aluminium window until the mechanical fixings are installed, or a gunned adhesive is applied. When using finishes with butyl-adhesive, pre-treat any porous and absorbent surfaces with ISO-TOP BLUE PRIMER and then apply the self-adhesive material to the surface. For all adhesive areas use a roller to carefully apply pressure to the area until the product adopts the contours of the facade.

Butyl caoutchouc adhesives are sensitive to solvents. When bonding the complete surface, using a solvent based contact adhesive, coat both the band and the substrate and then carefully press into place.



Installation example: ISO³-WINDOW SEALING SYSTEM

DIMENSIONS

width: 100, 150, 200, 250, 300, 400, 500 mm
alternative dimensions available on request

PACKAGING

rolls, roll length: 25 m