

SWR
BALUSTRADE



STAINLESS STEEL BALUSTRADE SYSTEM

www.swr-balustrade.co.uk

3 SWR BALUSTRADE

- 3 Contact Us
- 3 Service The SWR Way
- 3 Quality Assured
- 4 Grade Selection - AISI 304 or AISI 306?
- 4 Glass
- 4 Timber Effect Stainless Steel

5 MODULAR SYSTEM

- 5 Components
- 17 Glass Clamp Infill
- 20 Rod Infill
- 22 Wire Rope Infill

26 GLASS CHANNEL SYSTEM

- 26 Overview
- 28 Fitting Instructions
- 29 Components

32 STAND OFF BRACKETS

- 32 Overview

33 TIMBER HANDRAIL

- 33 Overview
- 33 Components

35 FIXINGS

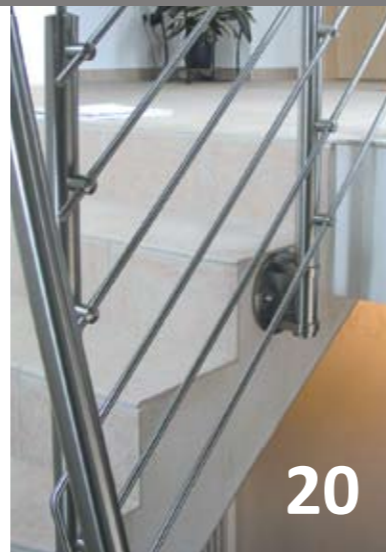
- 35 Overview
- 36 Components

39 TOOLS & ACCESSORIES

- 39 Components

42 HELP & ADVICE

- 42 Loading & Building Regulations
- 42 Cutting, Drilling & Polishing
- 43 Cleaning & Maintenance
- 43 Instant Online Quote
- 44 Also Available from SWR



CONTACT US



TEL: **01442 359878** FAX: **01442 259918**



www.swr-balustrade.co.uk sales@swr-balustrade.co.uk



SWR Limited, 3-4 Eastman Way, Hemel Hempstead, Hertfordshire, HP2 7DU
Office Hours: **Monday - Friday, 8.30am - 5.00pm**



Gazette
Customer Care Excellence
Award Winners

SERVICE THE SWR WAY

At SWR we are committed to providing high levels of customer service, whilst constantly looking at ways in which we can improve your experience in dealing with us. We have a dedicated team on hand to guide you in your selection of the most suitable balustrade system for your project.

Designing and installing your balustrade system is easier than you may think. Simply send us your sketches, photographs or technical drawings and we will help you turn your vision into a reality.

Our aim is to provide you with a premium quality, safe and reliable system. We will guide and advise you based on the industry standards and building regulations to ensure complete peace of mind in your selection.

QUALITY ASSURED

As an ISO 9001:2008 approved company, quality is at the forefront in all that we do. We have worked to ensure our balustrade systems are designed and manufactured to comply with industry standards and regulations.

Our systems have been rigorously tested by The British Standards Institute to BS 6180.

To download these test reports and for further technical information please visit us at:

www.swr-balustrade.co.uk/knowledge-centre.html



GRADE SELECTION – AISI 304 OR AISI 316?

Our balustrade range comprises of two grades of stainless steel in a 320 grit brushed finish.

Both AISI 304 and 316 stainless steel appear the same but perform very differently depending on the surrounding environment. This is due to the differences in the chemical composition between the two grades with AISI 316 offering more resistance to corrosion due to the molybdenum content.

In line with industry guidelines, we recommend AISI 316 for outdoor use and AISI 304 for all interior projects.

	Rural		Urban		Industrial		Marine	
	Internal	External	Internal	External	Internal	External	Internal	External
304	✓	✗	✓	✗	✗	✗	✗	✗
316	✓	✓	✓	✓	✓	✓	✓	✓

MODULAR SYSTEM

Our most popular system - strong, stunning and versatile

GLASS

SWR's approach to safety is paramount which equally extends to our choice of glass as an infill solution for your balustrade system.

All glass supplied by SWR is manufactured in accordance with BS EN 12600:2002 and our dedicated team will work closely with you to determine the best glass option for you based on the load information you provide.

Toughened glass is ideally suited to most applications where safety is critical, but consideration should be taken if the glass balustrade is at a high level.

Toughened & laminated glass is constructed of two pieces of toughened glass either side of a laminate interlayer and offers the same strength under impact as toughened glass with a crucial safety difference - If the pane is damaged resulting in the glass breaking, the fragments will be retained by the laminate interlayer, enabling the system to still act as a barrier until a replacement can be installed.

TIMBER EFFECT STAINLESS STEEL

Our timber effect stainless steel handrail is a longer lasting, more durable and low maintenance alternative to a wooden handrail.

It comes with a 15 year UK guarantee against colour fading and is suitable for cleaning without having a detrimental effect to the protective layer. Unlike wood, it won't bend, warp or deteriorate and does not need treating and varnishing each year. The timber effect foil coated stainless steel handrail is exclusive to SWR and comes in a light oak finish.

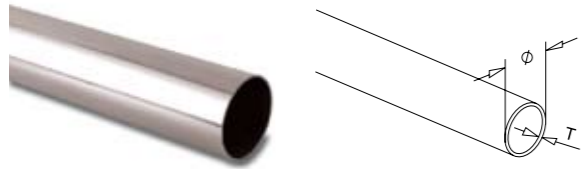
It can be used for commercial and domestic systems, indoors and outdoors. The thin, weather resistant wood effect coating will add a modern, stylish touch to your handrail.



TUBE

SWR's stainless steel post and handrail system is designed to provide a user friendly solution for the most bespoke balustrade requirements. The stylish modular system is available in a variety of contemporary infill solutions including glass, wire or rod; giving you complete freedom of design.

Our product range includes both AISI 304 and AISI 316 grade stainless steel in 42.4mm and 48.3mm diameter tube. Whether you require a balustrade system for a residential or commercial project, we at SWR can offer a cost effective solution designed to meet your specific needs.

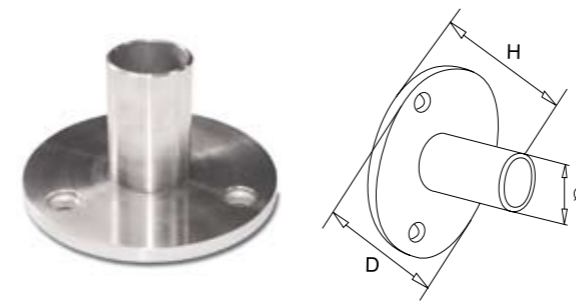


Tube

Ø	T	Grade	Part Code
42.4	2.0	AISI 304	4220.11.910
42.4	2.0	AISI 316	6220.11.910
48.3	2.6	AISI 304	4826.11.910
48.3	2.6	AISI 316	6826.11.910

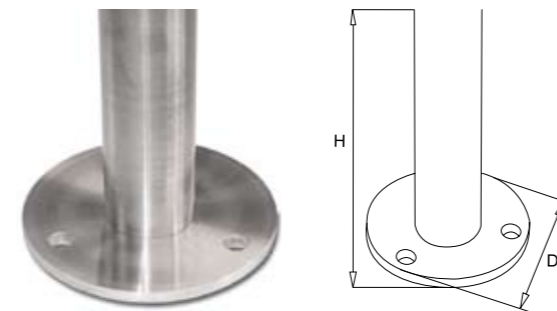
All dimensions are in millimetres unless otherwise stated.

BASE & WALL FIXINGS



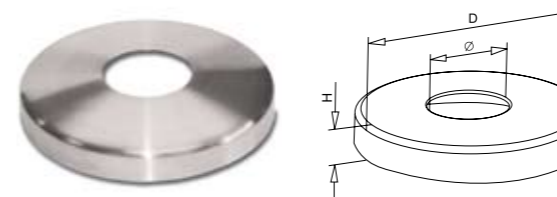
Base Plate

For Tube	H	D	Ø	Grade	Part Code
42.4	67	120	38.3	AISI 304	4220.12.010
42.4	67	120	38.3	AISI 316	6220.12.010



Base Plate & Floor Post (1050mm)

For Tube	H	D	Grade	Part Code
42.4	1050	120	AISI 304	4220.12.011
42.4	1050	120	AISI 316	6220.12.011

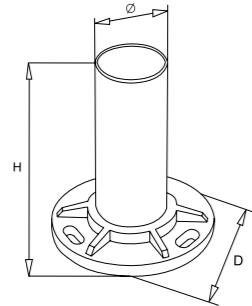


Base Plate Cover

For Tube	H	D	Ø	Grade	Part Code
42.4	18	125	42.4	AISI 304	4200.12.019
42.4	18	125	42.4	AISI 316	6200.12.019

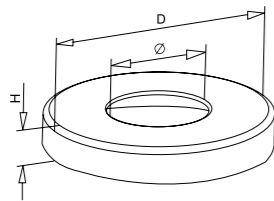


BASE & WALL FIXINGS



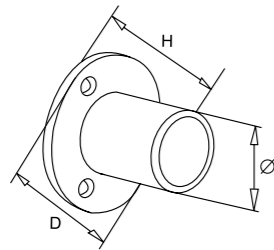
Heavy Duty Base Plate

For Tube	H	D	Ø	Grade	Part Code
48.3	100	100	44.2	AISI 304	4826.12.030
48.3	100	100	44.2	AISI 316	6826.12.030



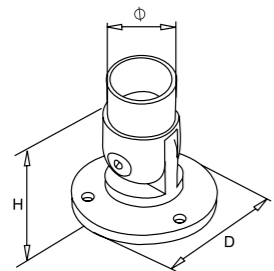
Heavy Duty Base Plate Cover

For Tube	H	D	Ø	Grade	Part Code
48.3	18	125	48.3	AISI 304	4800.12.039
48.3	18	125	48.3	AISI 316	6800.12.039



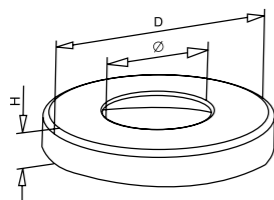
Wall Plate

For Tube	H	D	Ø	Grade	Part Code
42.4	67	80	38.3	AISI 304	4220.12.020
42.4	67	80	38.3	AISI 316	6220.12.020
48.3	67	80	44.2	AISI 304	4826.12.020
48.3	67	80	44.2	AISI 316	6826.12.020



Articulated Wall Plate

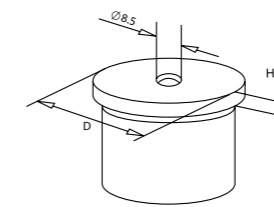
For Tube	H	D	Ø	Grade	Part Code
42.4	63	80	42.4	AISI 304	4220.12.021
42.4	63	80	42.4	AISI 316	6220.12.021



Wall Plate Cover

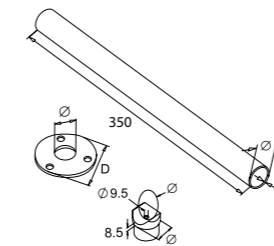
For Tube	H	D	Ø	Grade	Part Code
42.4	16	84	42.5	AISI 304	4200.12.029
42.4	16	84	42.5	AISI 316	6200.12.029

BASE & WALL FIXINGS



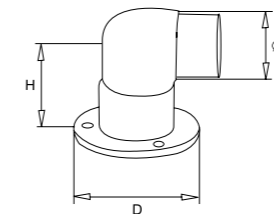
Small Wall Plate

For Tube	H	D	Grade	Part Code
42.4	5	42.4	AISI 304	4220.12.022
42.4	5	42.4	AISI 316	6220.12.022



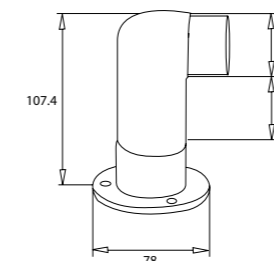
Breast Work Section

For Tube	Ø	D	Grade	Part Code
42.4	42.4	120	AISI 304	4220.21.030
42.4	42.4	120	AISI 316	6220.21.030



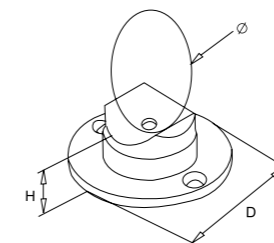
Short 90° Base Plate

For Tube	H	D	Ø	Grade	Part Code
42.4	51.2	76	42.4	AISI 304	4220.12.090
42.4	51.2	76	42.4	AISI 316	6220.12.090



Long 90° Base Plate

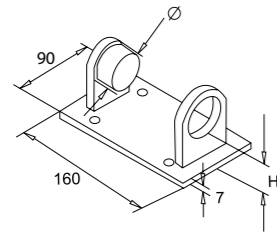
For Tube	H	D	Ø	Grade	Part Code
42.4	65	78	42.4	AISI 304	4220.12.100
42.4	65	78	42.4	AISI 316	6220.12.100



Support Flange

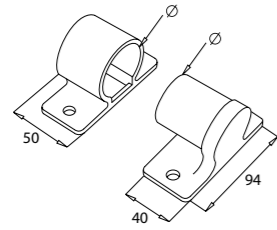
For Tube	H	D	Ø	Grade	Part Code
42.4	30	76	42.4	AISI 304	4220.12.110
42.4	30	76	42.4	AISI 316	6220.12.110

BASE & WALL FIXINGS



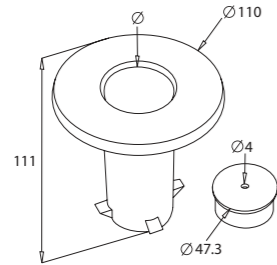
Post Holder

For Tube	H	∅	Grade	Part Code
42.4	27	42.4	AISI 304	4220.12.101
42.4	27	42.4	AISI 316	6220.12.101
48.3	21	48.3	AISI 304	4826.12.101
48.3	21	48.3	AISI 316	6826.12.101



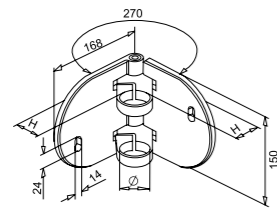
Two Part Post Holder

For Tube	∅	Grade	Part Code
42.4	42.4	AISI 304	4220.12.103
42.4	42.4	AISI 316	6220.12.103



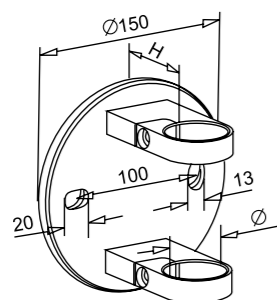
Flush Ground Post Holder

For Tube	∅	Grade	Part Code
42.4	42.4	AISI 304	4220.12.107
42.4	42.4	AISI 316	6220.12.107



Hinged Post Holder

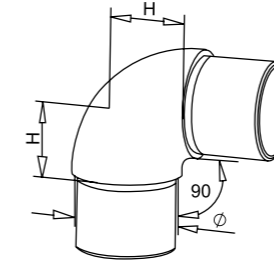
For Tube	H	∅	Grade	Part Code
42.4	45	42.4	AISI 304	4220.12.555
42.4	45	42.4	AISI 316	6220.12.555
48.3	45	48.3	AISI 304	4826.12.555
48.3	45	48.3	AISI 316	6826.12.555



Round Post Holder

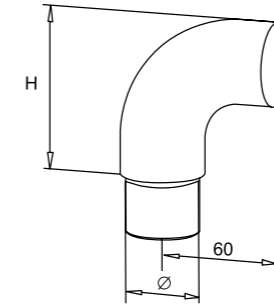
For Tube	H	∅	Grade	Part Code
42.4	45	42.4	AISI 304	4220.12.551
42.4	45	42.4	AISI 316	6220.12.551
48.3	45	48.3	AISI 304	4826.12.551
48.3	45	48.3	AISI 316	6826.12.551

BENDS, ELBOWS & TEES



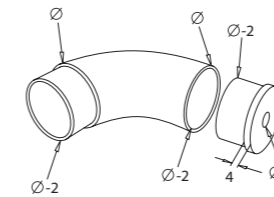
90° Curved Elbow

For Tube	H	∅	Grade	Part Code
42.4	30	42.4	AISI 304	4220.15.160
42.4	30	42.4	AISI 316	6220.15.160
48.3	35	48.3	AISI 304	4826.15.160
48.3	35	48.3	AISI 316	6826.15.160



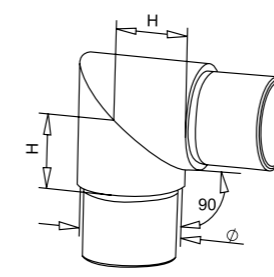
90° Curved Elbow M/F (with Cap)

For Tube	H	∅	Grade	Part Code
42.4	81	42.4	AISI 304	4220.15.165
42.4	81	42.4	AISI 316	6220.15.165
48.3	84	48.3	AISI 304	4826.15.165
48.3	84	48.3	AISI 316	6826.15.165



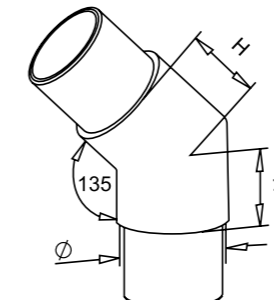
90° Curved Elbow M/F (with Cap)

For Tube	∅	Grade	Part Code
42.4	42.4	AISI 304	4220.15.166
42.4	42.4	AISI 316	6220.15.166



90° Sharp Elbow

For Tube	H	∅	Grade	Part Code
42.4	30	42.4	AISI 304	4220.15.170
42.4	30	42.4	AISI 316	6220.15.170
48.3	35	48.3	AISI 304	4826.15.170
48.3	35	48.3	AISI 316	6826.15.170

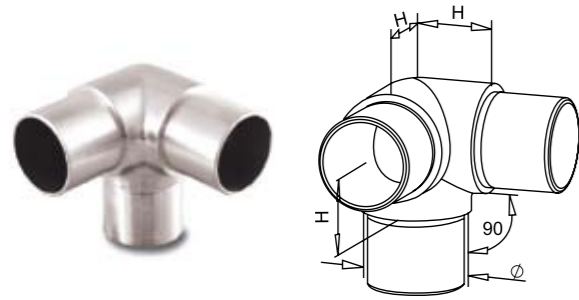


45° Elbow

For Tube	H	∅	Grade	Part Code
42.4	30	42.4	AISI 304	4220.15.175
42.4	30	42.4	AISI 316	6220.15.175

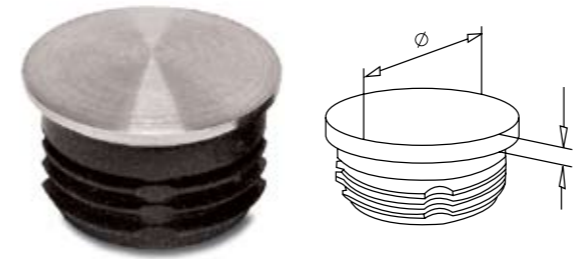
BENDS, ELBOWS & TEES

END CAPS



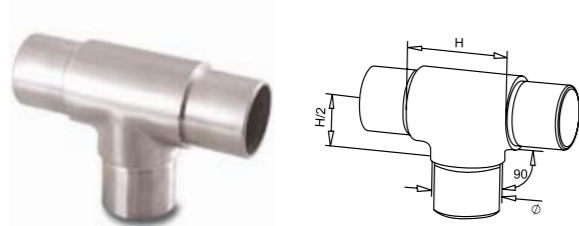
Three Way Elbow

For Tube	H	Ø	Grade	Part Code
42.4	51	42.4	AISI 304	4220.15.190
42.4	51	42.4	AISI 316	6220.15.190
48.3	59	48.3	AISI 304	4826.15.190
48.3	59	48.3	AISI 316	6826.15.190



Flat Capping Plug (Plastic Sleeve)

For Tube	H	Ø	Grade	Part Code
42.4	4	42.4	AISI 304	4220.15.140
42.4	4	42.4	AISI 316	6220.15.140
48.3	4	48.3	AISI 304	4826.15.140
48.3	4	48.3	AISI 316	6826.15.140



Equal T

For Tube	H	Ø	Grade	Part Code
42.4	60	42.4	AISI 304	4220.15.210
42.4	60	42.4	AISI 316	6220.15.210
48.3	70	48.3	AISI 304	4826.15.210
48.3	70	48.3	AISI 316	6826.15.210



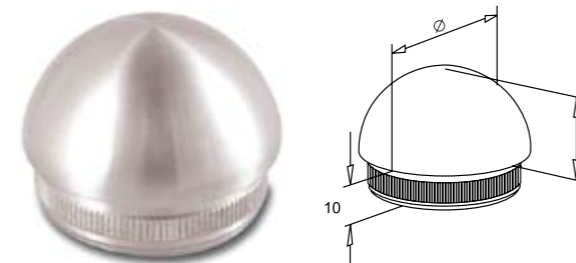
Round Capping Plug (Plastic Sleeve)

For Tube	H	Ø	Grade	Part Code
42.4	20	42.4	AISI 304	4220.15.150
42.4	20	42.4	AISI 316	6220.15.150
48.3	20	48.3	AISI 304	4826.15.150
48.3	20	48.3	AISI 316	6826.15.150



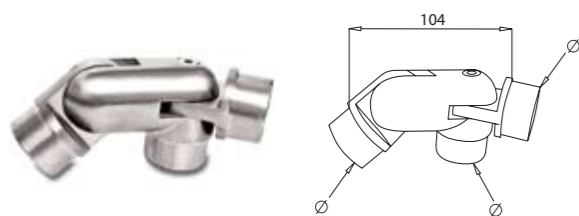
Articulated Elbow

For Tube	H	Ø	Grade	Part Code
42.4	27	42.4	AISI 304	4220.15.250
42.4	27	42.4	AISI 316	6220.15.250
48.3	30	48.3	AISI 304	4826.15.250
48.3	30	48.3	AISI 316	6826.15.250



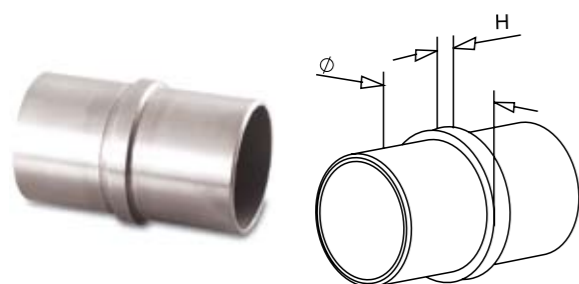
Round Capping Plug (Stainless Steel)

For Tube	H	Ø	Grade	Part Code
42.4	21	42.4	AISI 304	4220.15.155
42.4	21	42.4	AISI 316	6220.15.155



Three Way Articulated Joint

For Tube	Ø	Grade	Part Code
42.4	42.4	AISI 304	4220.15.251
42.4	42.4	AISI 316	6220.15.251
48.3	48.3	AISI 304	4826.15.251
48.3	48.3	AISI 316	6826.15.251

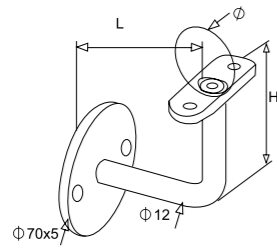


Straight Connector

For Tube	H	Ø	Grade	Part Code
42.4	4	42.4	AISI 304	4220.15.280
42.4	4	42.4	AISI 316	6220.15.280
48.3	4	48.3	AISI 304	4826.15.280
48.3	4	48.3	AISI 316	6826.15.280

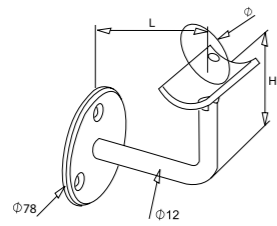


HANDRAIL BRACKETS



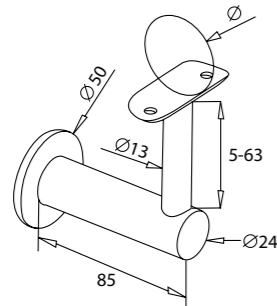
Wall Bracket

For Tube	H	L	Ø	Grade	Part Code
42.4	74	75	42.4	AISI 304	4200.13.040
42.4	74	75	42.4	AISI 316	6200.13.040



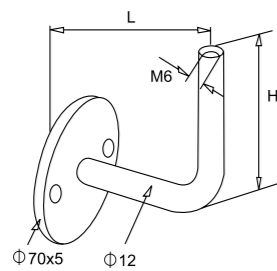
Articulated Wall Bracket

For Tube	H	L	Ø	Grade	Part Code
42.4	63	66	42.4	AISI 304	4200.13.041
42.4	63	66	42.4	AISI 316	6200.13.041
48.3	63	66	48.3	AISI 304	4800.13.041
48.3	63	66	48.3	AISI 316	6800.13.041



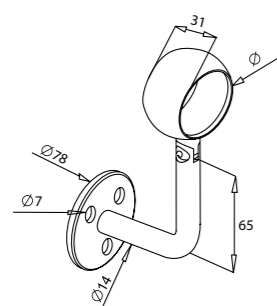
Wall Bracket

For Tube	Ø	Grade	Part Code
42.4	42.4	AISI 304	4200.43.042
42.4	42.4	AISI 316	6200.43.042



Wall Bracket (Requires Welding)

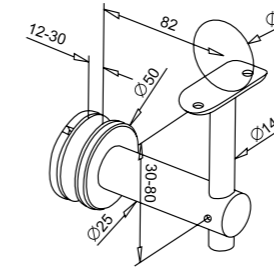
For Tube	H	L	Grade	Part Code
All	50	75	AISI 304	4000.13.043
All	50	75	AISI 316	6000.13.043



Wall Bracket with Ring Saddle

For Tube	Ø	Grade	Part Code
42.4	42.4	AISI 304	4200.13.044
42.4	42.4	AISI 316	6200.13.044

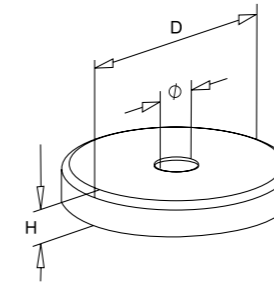
HANDRAIL BRACKETS



Bracket for Glass

For Tube	Ø	Grade	Part Code
42.4	42.4	AISI 304	4200.16.045
42.4	42.4	AISI 316	6200.16.045

Suitable for 12-13mm glass



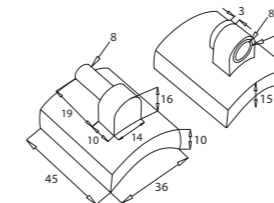
Wall Bracket Cover

For Tube	H	D	Ø	Grade	Part Code
42.4	14	85	42.4	AISI 304	4200.13.049
42.4	14	85	42.4	AISI 316	6200.13.049



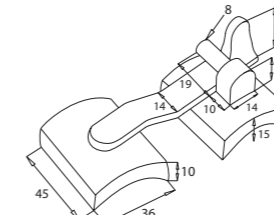
Ball with Internal Thread

Ø	Thread	Grade	Part Code
50	M6	AISI 304	4000.21.355



Gate Hinge

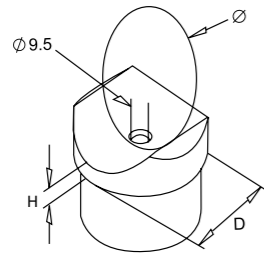
For Tube	Ø	Grade	Part Code
42.4	42.4	AISI 316	6200.21.500



Gate Latch

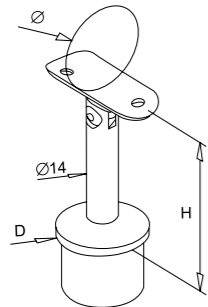
For Tube	Ø	Grade	Part Code
42.4	42.4	AISI 316	6200.21.520

HANDRAIL SUPPORTS



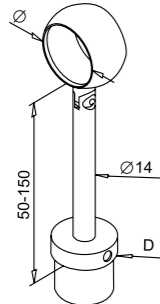
Tube Saddle

For Tube	H	D	Ø	Grade	Part Code
42.4	8.5	42.4	42.4	AISI 304	4220.14.230
42.4	8.5	42.4	42.4	AISI 316	6220.14.230
48.3	8.5	48.3	48.3	AISI 304	4826.14.230
48.3	8.5	48.3	48.3	AISI 316	6826.14.230



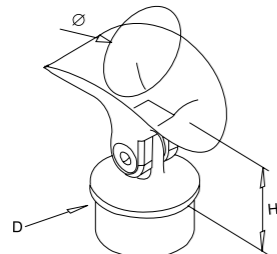
Stand Off Articulated Rail Support

For Tube	H	D	Ø	Grade	Part Code
42.4	78	42.4	42.4	AISI 304	4220.14.233
42.4	78	42.4	42.4	AISI 316	6220.14.233
48.3	80	48.3	48.3	AISI 304	4826.14.233
48.3	80	48.3	48.3	AISI 316	6826.14.233



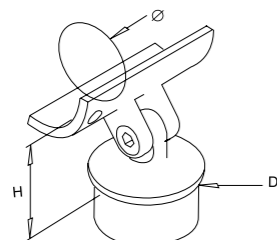
Articulated Ring Saddle

For Tube	D	Ø	Grade	Part Code
42.4	42.4	42.4	AISI 304	4220.14.234
42.4	42.4	42.4	AISI 316	6220.14.234



Articulated Tube Saddle

For Tube	H	D	Ø	Grade	Part Code
42.4	55	42.4	42.4	AISI 304	4220.14.240
42.4	55	42.4	42.4	AISI 316	6220.14.240



Articulated Post Bracket

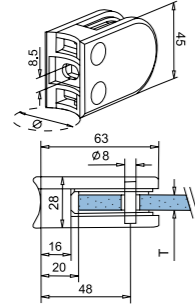
For Tube	H	D	Ø	Grade	Part Code
42.4	40	42.4	42.4	AISI 304	4220.14.241
42.4	40	42.4	42.4	AISI 316	6220.14.241

GLASS CLAMP INFILL

Creates a contemporary look without obscuring the view.

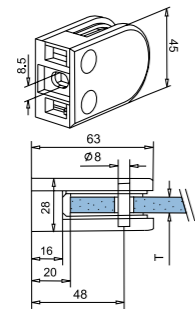


GLASS CLAMP INFILL



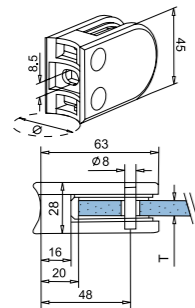
Round Glass Bracket

For Tube	Suit Glass T	Ø	Grade	Part Code
42.4	6-8	42.4	AISI 304	4200.16.260
42.4	6-8	42.4	AISI 316	6200.16.260
42.4	8-10	42.4	AISI 304	4200.16.261
42.4	8-10	42.4	AISI 316	6200.16.261
48.3	8-10	48.3	AISI 304	4800.16.261
48.3	8-10	48.3	AISI 316	6800.16.261
48.3	11.5	48.3	AISI 316	6800.16.115



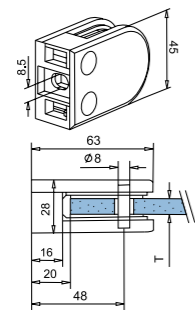
Flat Glass Bracket

For Tube	Suit Glass T	Grade	Part Code
Flat	6-8	AISI 316	6F00.16.260
Flat	8-10	AISI 316	6F00.16.261



Round Zamac Glass Bracket

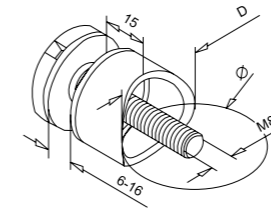
For Tube	Suit Glass T	Ø	Grade	Part Code
42.4	6-8	42.4	Zamac	Z200.17.272
42.4	8-10	42.4	Zamac	Z200.17.271
42.4	10-12	42.4	Zamac	Z200.17.273



Flat Zamac Glass Bracket

For Tube	Suit Glass T	Grade	Part Code
Flat	6-8	Zamac	ZF00.17.272
Flat	8-10	Zamac	ZF00.17.271
Flat	10-12	Zamac	ZF00.17.273

GLASS CLAMP INFILL



Vertical Glass Hanger

For Tube	D	Ø	Grade	Part Code
42.4	30	42.4	AISI 304	4200.16.262



ROD INFILL COMPONENTS

ROD INFILL

A modern look with a sturdy, rigid finish.



12mm Rod Holder

For Tube	D	∅	Grade	Part Code
42.4	12.2	42.4	AISI 304	4200.20.311
42.4	12.2	42.4	AISI 316	6200.20.311
48.3	12.2	48.3	AISI 304	4800.20.311
48.3	12.2	48.3	AISI 316	6800.20.311



Rod

∅	Length	Grade	Part Code
12	Up to 3m	AISI 304	4000.19.012
12	Up to 3m	AISI 316	6000.19.155



WIRE INFILL COMPONENTS

WIRE ROPE INFILL

A minimal finish, fitting for all applications.



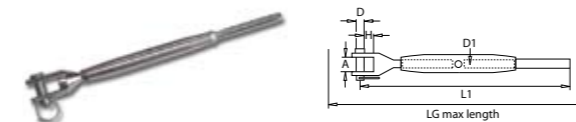
Wire Rope Tension Kit

For Tube	Length	Grade	Part Code
Universal	3 metres	AISI 316	6000.23.003
Universal	5 metres	AISI 316	6000.23.005
Universal	10 metres	AISI 316	6000.23.010



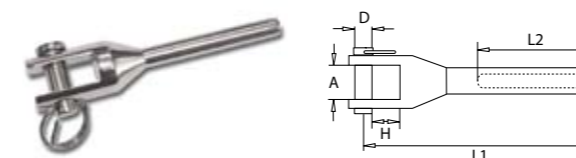
Wire Rope Post Tensioner

For Tube	D	Ø	Grade	Part Code
42.4	4	42.4	AISI 304	4200.23.471
42.4	4	42.4	AISI 316	6200.23.471
Timber	4	Flat	AISI 304	4000.23.472
Timber	4	Flat	AISI 316	6000.23.472



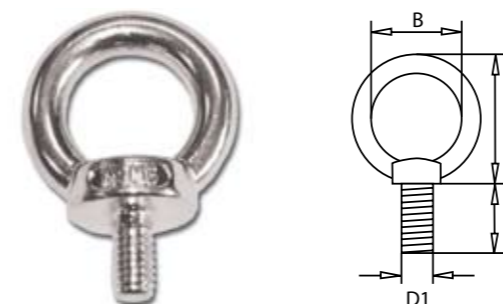
Rigging Screw (Jaw & Wire Rope Terminal MT Form Stainless Steel)

D1	Wire	L1	A	D	H	LG	Part Code
M8	4	210	11	8	11	285	SSRFS0408M
M12	6	300	14	12	20	410	SSRFS0612M



Swage Fork Terminal (MT Form Stainless Steel)

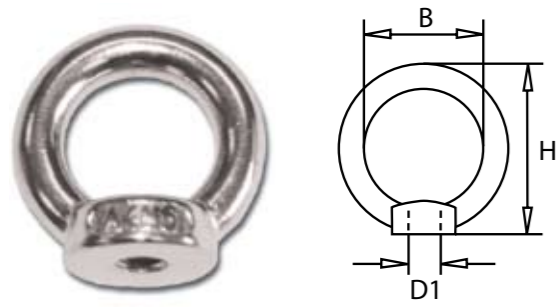
Wire	L1	L2	A	D	H	Part Code
4	86	45	11	8	11	SSRFS0408M
6	128	64	14	12	20	SSRFS0612M



Eye Bolt (DIN 580 Type Stainless Steel)

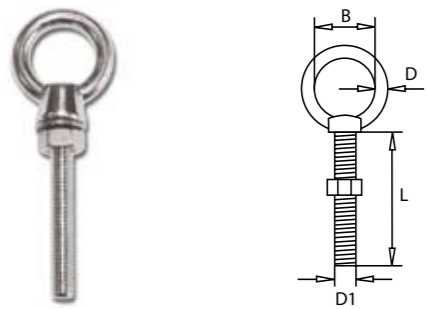
D1	L	B	H	WT (kg)	Part Code
M6	11	16	28.06	0.025	SSEB0006
M8	13	20	35.65	0.050	SSEB0008
M10	17	25	44.12	0.094	SSEB0010
M12	20.5	30	52.16	0.166	SSEB0012

WIRE INFILL COMPONENTS



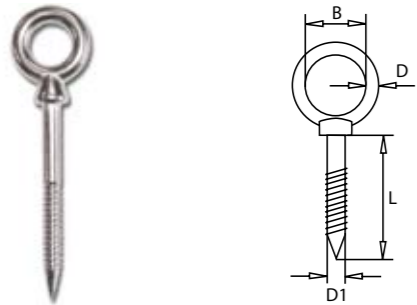
Eye Nut (DIN 582 Type Stainless Steel)

D1	B	H	WT (kg)	Part Code
M6	16	28.06	0.023	SSEN0006
M8	20	35.65	0.046	SSEN0008
M10	25	44.42	0.086	SSEN0010
M12	30	52.16	0.144	SSEN0012



Eye Bolt (Metric Thread Stainless Steel)

D1	L	D	B	WLL (Tons)	WT (kg)	Part Code
M6	40	5	15	0.05	0.027	SSLEB06040
M6	60	5	15	0.05	0.030	SSLEB06060
M6	80	5	15	0.05	0.035	SSLEB06080
M8	80	6	20	0.08	0.065	SSLEB08080
M8	100	6	20	0.08	0.072	SSLEB08100
M10	100	8	25	0.15	0.130	SSLEB10100
M12	120	10	30	0.22	0.230	SSLEB12120

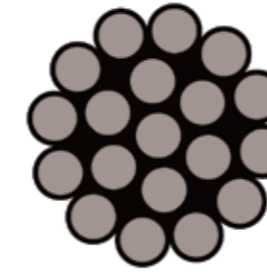


Eye Bolt (Wood Thread Stainless Steel)

D	L	B	WLL (Tons)	WT (kg)	Part Code
5	50	11	0.05	0.017	SSLEB05050L
6	60	14	0.08	0.028	SSLEB06060L
8	80	18	0.15	0.065	SSLEB06080L
10	100	22	0.22	0.127	SSLEB10100L

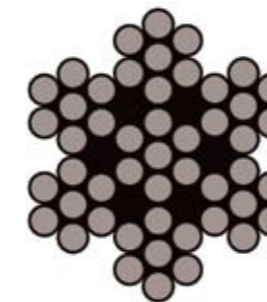
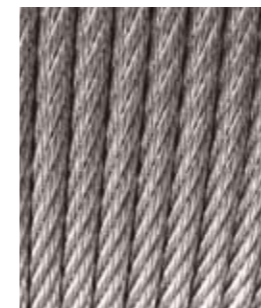
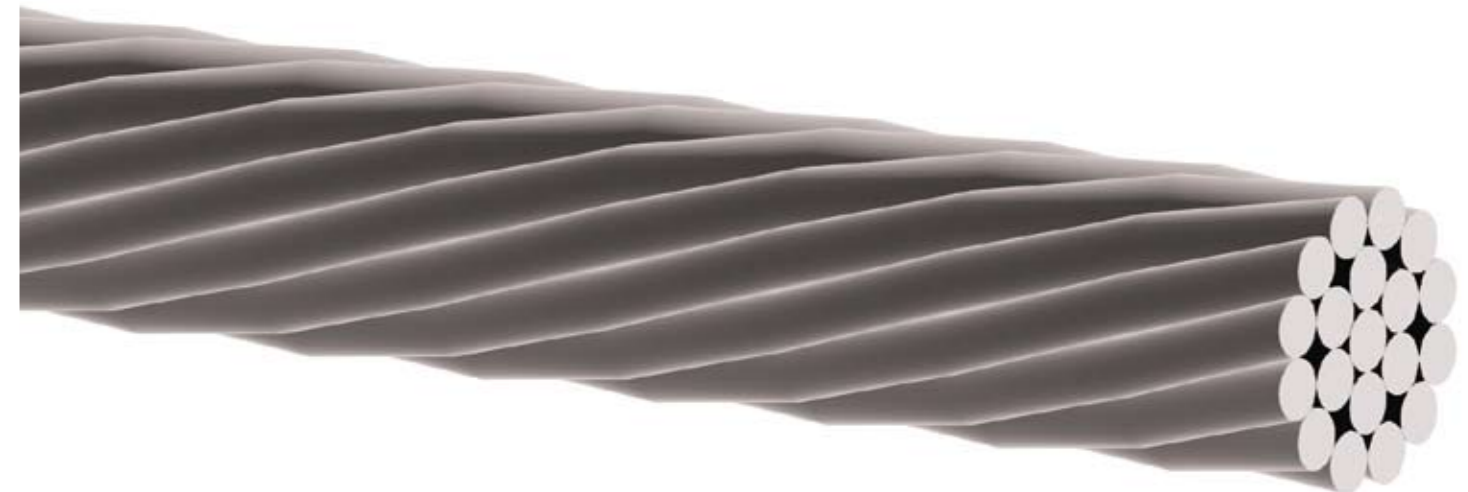


WIRE INFILL COMPONENTS



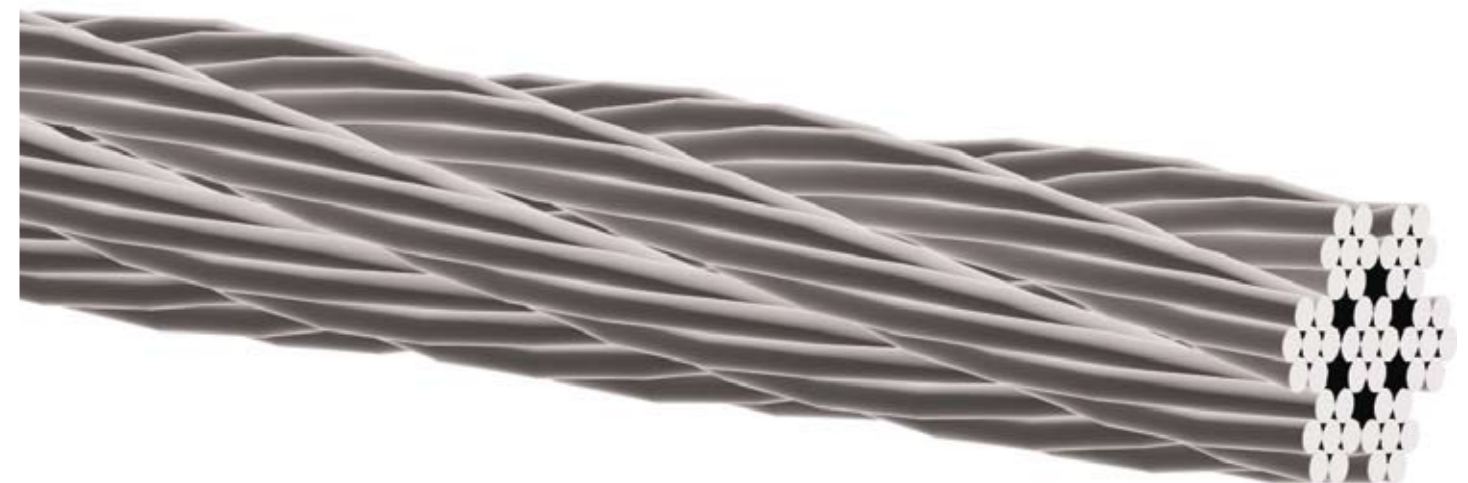
Stainless Steel Wire Rope (1x19)

Diameter	Approx. Mass	Min. Breaking Load	Part Code
4	7.81kg/100m	12.6 force kN	SS119040
6	17.6kg/100m	28.2 force kN	SS119060



Stainless Steel Wire Rope (7x7)

Diameter	Approx. Mass	Min. Breaking Load	Part Code
4	6.05kg/100m	9.49 force kN	SS770040
6	13.6kg/100m	21.4 force kN	SS770060



OVERVIEW

GLASS CHANNEL SYSTEM

Our seamless, fashionable, state of the art system.

SWR offer a glass channel system for both internal and external use. The seamless design of the glass channel system is supported by a solid aluminium channel which can be floor or side fixed. The system can secure from 10mm to 25.5mm toughened laminated glass, which is held in place with a wedge system. A stainless steel handrail can be fitted to the top of the glass to complete the stylish look and also improve the structural stability of the system.

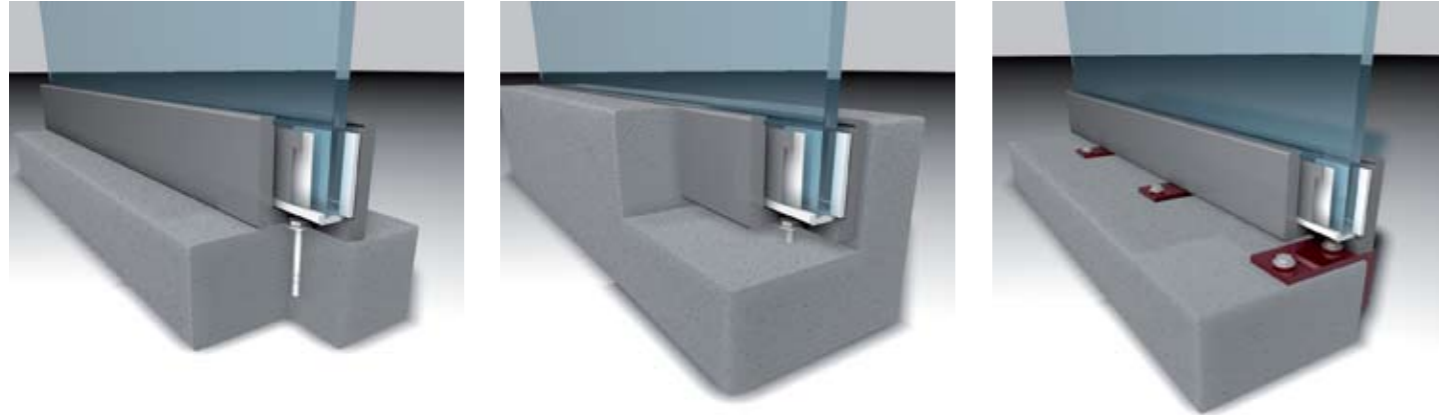
Our frameless system has been tested to BS 6180 to ensure that it meets the highest industry standards. The system is capable of withstanding a 3kN load making it the perfect choice for crowded areas such as shopping centres.

For further information on building regulations and our test results, please visit our website: www.swr-balustrade.co.uk/knowledge-centre.html



FITTING INSTRUCTIONS

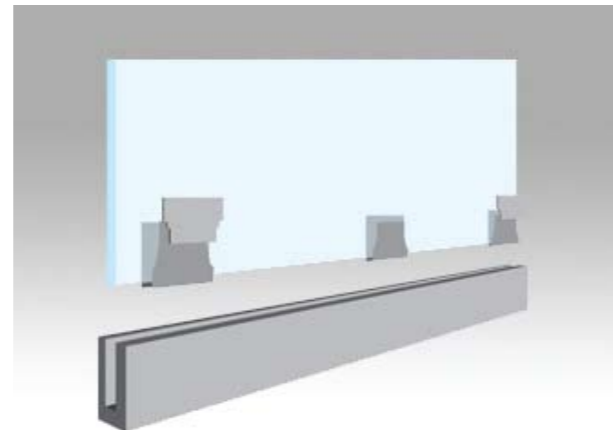
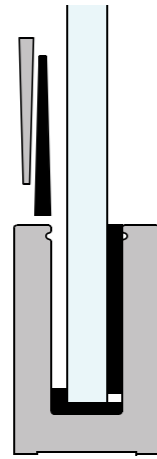
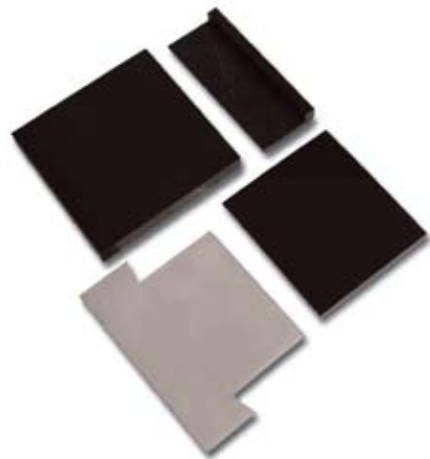
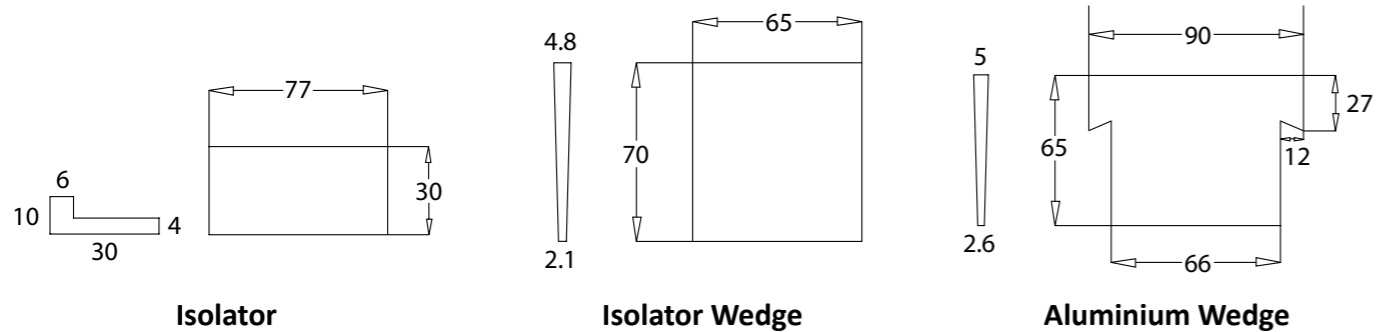
Our glass channel system can be base fixed or side fixed into a variety of materials using the appropriate fixings. Firstly use the aluminium channel as a template to mark out where the holes need to be drilled. Use spacers if necessary to ensure the channel is level. Remove the channel then drill the holes. Replace the channel and secure with fixings to make the channel rigid. The channel must be perfectly positioned vertically in order for the glass to be upright.



The wedges must be 100mm from the edges of each glass panel. Place the bottom isolators into the channel at maximum intervals of 250mm.

Position the glass and then place the side isolators above the bottom isolators. Slide the isolator wedges in between the glass and the aluminium channel, central to the bottom isolator and with the thin end pointing upwards.

Now slide the aluminium wedge between the isolator wedge and the aluminium channel with the wings protruding either side of the isolator wedge and approximately 15-20mm above the aluminium channel. When the required amount of wedges have been set up you can then hammer in the aluminium wedges with a lump hammer and bolster.

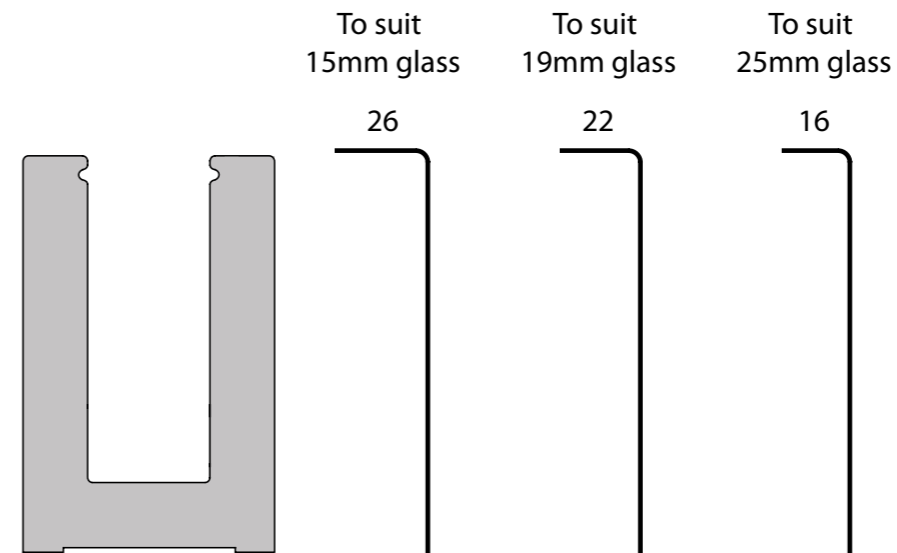


FITTING INSTRUCTIONS

Should you need to remove the wedges, you can use a wedge removal kit. This can be purchased or rented from SWR.

There are several ways to fix the cladding to the channel. You can use double-sided tape, silicone or adhesive. The tape method although strong overall, only gives you one chance to fit and does not allow for any movement. The silicone or adhesive method allows minor adjustments after bonding as it is in a liquid form before curing. SWR recommend our adhesive for the job.

A small silicone bead can be used on the top of the cladding as this gives it a wonderful finish and will repel any liquid spilt or weathered onto the cladding. The cladding sizes are below:

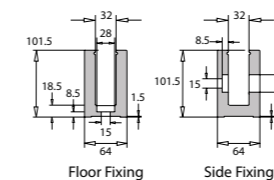


A stainless steel slotted handrail can be fitted to the top of the glass to complete the stylish look as well as improving the structural stability of the system. The handrail easily slots onto the glass using rubber gaskets to ensure a snug fit.

For further help on fitting your glass channel system, please call SWR on: **01442 359878**



ALL COMPONENTS



Aluminium Channel

Fixing	Length	To Suit Glass	Part Code
Floor	Up to 3 metres	15, 19 or 25	0000.31.300
Side	Up to 3 metres	15, 19 or 25	0000.31.301

Suitable for glass sized 10mm-25.5mm - please call for further details.

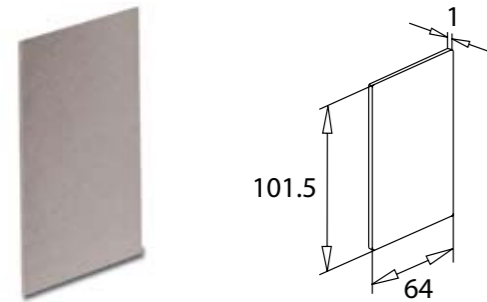
COMPONENTS



Channel Cladding

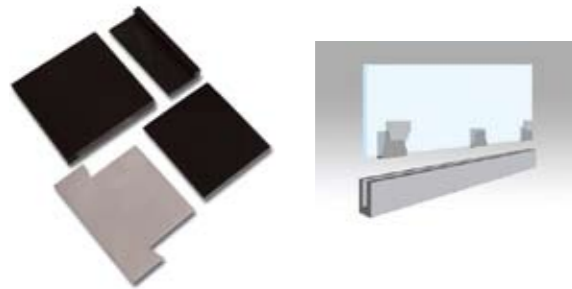
To Suit Glass	Grade	Part Code
15	AISI 316	6000.32.022+026
19	AISI 316	6000.32.022+022
25	AISI 316	6000.32.022+016

The above codes are based on the channel being floor fixed.



End Plate

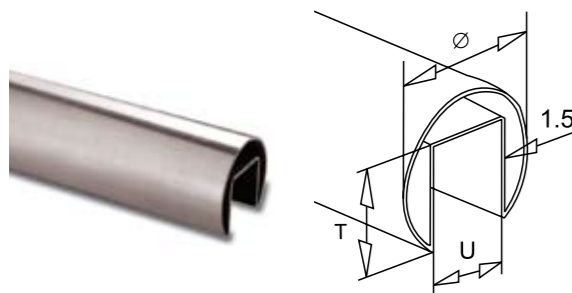
Grade	Part Code
AISI 316	6000.32.010



Wedge Kits

For Glass	Material	Quantity	Part Code
15	Nylon	Pack of 12	0000.33.015KIT
19	Nylon	Pack of 12	0000.33.019KIT
25	Nylon	Pack of 12	0000.33.025KIT

We can supply wedge kits for any glass sized 10mm-25.5mm.



Slotted Handrail

Length	Ø	T	U	Grade	Part Code
Up to 6m	42.4	25	25	AISI 304	4215.41.910
Up to 6m	42.4	25	25	AISI 316	6215.41.910
Up to 6m	48.3	30	25	AISI 304	4815.41.910
Up to 6m	48.3	30	25	AISI 316	6815.41.910



Rubber Gasket

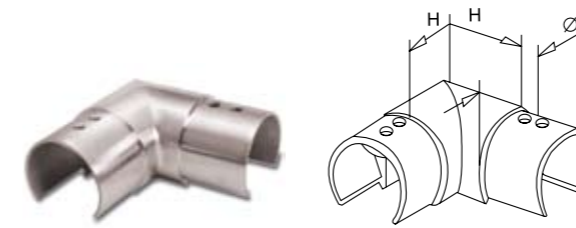
For Tube	Length	To Suit Glass	Part Code
42.4	1 metre	15	0200.47.015
48.3	1 metre	15	0800.47.015
48.3	1 metre	19	0800.47.019
48.3	1 metre	25	0800.47.025

COMPONENTS



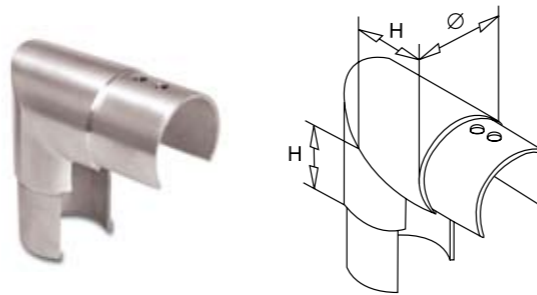
Straight Connector

For Tube	H	Ø	Grade	Part Code
42.4	6	42.4	AISI 304	4215.45.280
42.4	6	42.4	AISI 316	6215.45.280
48.3	6	48.3	AISI 316	6815.45.280



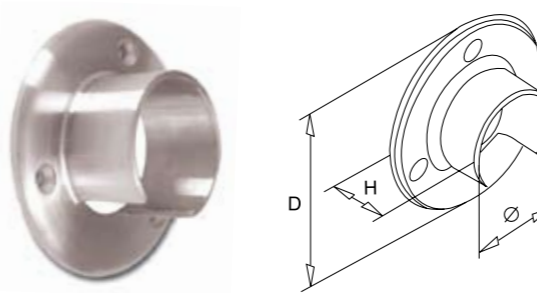
90° Elbow (Horizontal)

For Tube	H	Ø	Grade	Part Code
42.4	30	42.4	AISI 316	6215.45.180
48.3	35	48.3	AISI 316	6815.45.180



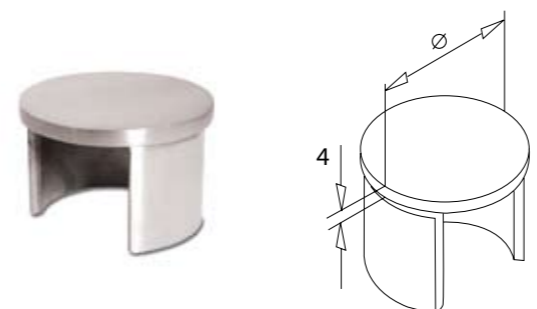
90° Elbow (Vertical)

For Tube	H	Ø	Grade	Part Code
42.4	30	42.4	AISI 316	6215.45.170
48.3	35	48.3	AISI 316	6815.45.170



Wall Mounted Bracket

For Tube	H	D	Ø	Grade	Part Code
42.4	30	90	42.4	AISI 304	4215.42.020
42.4	30	90	42.4	AISI 316	6215.42.020
48.3	35	95	48.3	AISI 304	4815.42.020
48.3	35	95	48.3	AISI 316	6815.42.020



End Cap

For Tube	Ø	Grade	Part Code
42.4	42.4	AISI 304	4215.45.140
42.4	42.4	AISI 316	6215.45.140
48.3	48.3	AISI 304	4815.45.140
48.3	48.3	AISI 316	6815.45.140

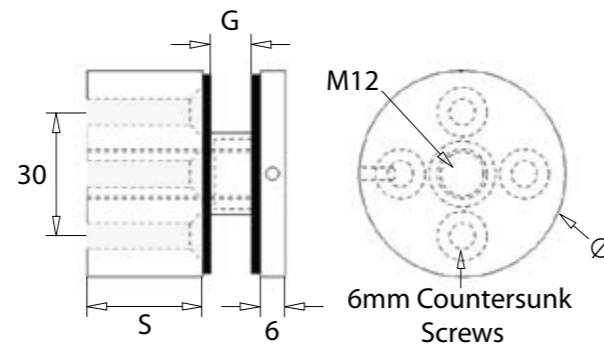
OVERVIEW

The NEW stand off brackets from SWR allow for the installation of a structural glass balustrade in almost any location. Whether you require a Juliet balcony or a glass balustrade for your staircase or terrace these brackets are the ideal solution. A stainless steel handrail can also be incorporated onto the glass if desired.

We provide a variety of bracket sizes from 10mm up to 100mm (S). Available in 50mm diameter (Ø). The brackets can incorporate 8mm, 10mm, 12mm or 15mm thick glass (G). Other glass thicknesses can be integrated upon request.

We supply brackets in a mirror or satin finish, available in both AISI 304 (internal) and AISI 316 (external) grade stainless steel.

Brackets have a side drive hole in the boss for tightening and are supplied complete with soft parts. They require a 25mm diameter hole in the glass.



OVERVIEW

For an excellent alternative to a stainless steel handrail, SWR's oak timber handrails are perfect for a natural feel and appearance.

Our oak timber handrail is 45mm diameter and can be varnished to a colour of your choice.

It is compatible with a range of our stainless steel components, giving a modern feel to your balustrade system.



COMPONENTS



Oak Handrail

Ø	Part Code
45	0000.71.0AO



Round End Cap

Grade	Part Code
AISI 304	4000.75.260



Flat End Cap

Grade	Part Code
AISI 304	4000.75.265



OVERVIEW



90° Curved Elbow

Grade	Part Code
AISI 304	4000.75.600



90° Sharp Elbow

Grade	Part Code
AISI 304	4000.75.601



Connector

Grade	Part Code
AISI 304	4000.75.603



Nylon Connector

∅	Material	Part Code
39	Nylon	0000.75.600



T-Connector for Tube

∅	Grade	Part Code
42.4	AISI 304	4000.75.602

High quality AISI 316 / A4 stainless steel fixings available from SWR

Whether you are fixing into solid concrete, brick or timber; SWR have the perfect solution.

Our dedicated team will guide you through the fixings you require for each component and will advise on the most suitable fixing methods for your project.

All of our fixings are high quality AISI 316 / A4 stainless steel and are available from stock.

For further information, please visit: www.swr-balustrade.co.uk/fixings



COMPONENTS

COMPONENTS



Socket Cap Screw

Size	Length	Quantity	Part Code
M8	20	Packs of 10	6000.91.250



Socket Button Screw

Size	Length	Quantity	Part Code
M5	20	Packs of 10	6000.91.140



Coach Screw

Size	Length	Quantity	Part Code
M8	100	Packs of 12	6000.91.210
M8	120	Packs of 12	6000.91.211
M10	100	Packs of 12	6000.91.310
M10	120	Packs of 12	6000.91.311
M12	100	Packs of 12	6000.91.410
M12	120	Packs of 12	6000.91.411



Self Tapping Pan Head Screw

Gauge	Ø	Length	Quantity	Part Code
4	3	1¼" (30mm)	Pack of 12	6000.91.032
10	5	2" (50mm)	Pack of 12	6000.91.030



Studding

Size	Quantity	Part Code
M8	Per metre	6000.91.220
M10	Per metre	6000.91.320
M12	Per metre	6000.91.420



Self Tapping Countersunk Screw

Gauge	Ø	Length	Quantity	Part Code
10	5	2" (50mm)	Pack of 12	6000.91.032



Round Washers

Size	Quantity	Part Code
M8	Pack of 25	6000.91.280
M10	Pack of 25	6000.91.380
M12	Pack of 25	6000.91.480



Rawl Through Bolt

Size	Length	Quantity	Part Code
M8	95	Pack of 15	6000.91.260
M10	95	Pack of 15	6000.91.360
M12	100	Pack of 15	6000.91.460



Dome Nuts

Size	Quantity	Part Code
M8	Pack of 10	6000.91.271
M10	Pack of 10	6000.91.371
M12	Pack of 10	6000.91.471

COMPONENTS



Hex Nuts

Size	Quantity	Part Code
M8	Pack of 10	6000.91.270
M10	Pack of 10	6000.91.370
M12	Pack of 10	6000.91.470



Polyester Resin

Size	Quantity	Part Code
410ml	Per bottle	0000.62.020



Mixer Nozzles

Size	Quantity	Part Code
For use with all cartridges	Pack of 10	0000.90.002



Structural Adhesive

Size	Quantity	Part Code
25ml	Per syringe	0000.61.637



Rawl Plugs

Size	Quantity	Part Code
7mm	Box of 100	0000.91.011

COMPONENTS



Drill Bits

Ø	Part Code
3.2	0000.90.032
4.1	0000.90.041
5.0	0000.90.050
6.5	0000.90.065
6.8	0000.90.068



Tappers

Size	Part Code
M3	0000.90.003
M4	0000.90.004
M5	0000.90.005
M6	0000.90.006
M8	0000.90.008



Tapping Wrench

Part Code
0000.90.285



Wire Rope Cutters

Part Code: **SWR0060**

Type of Wire/Material	Max. Cutting Capacities
1770 - 1960 Grade Wire Rope	4mm



Allen Key

Size	Part Code
3mm	0000.90.009
6mm	0000.90.001

COMPONENTS



- VDE No-volt switch
- 6 speed bench drill complete with 16mm capacity suitable for the automotive and maintenance workshop.
- Powered by 375W motor offering a highly efficient, smooth running operation. It has an adjustable circular tilting table complete with a rise and fall rack and pinion.
- Fitted with a BS approved non re-wireable 3 pin moulded plug and cable.

Bench Drill

Part Code: **GD16/16C**

230v 16 speed 16mm capacity bench mounted pillar drill	
Drilling capacity	16mm
Chuck capacity	16mm
Collar diameter	55mm
Spindle taper	MT2
Speeds (rpm)	16 (190-2685)
Swing	335mm
Spindle travel	80mm
Column diameter	73mm
Table diameter	290mm
Throat depth	140mm
Base size	435 x 260mm
Motor	375W
Height	970mm
Weight	57kg

COMPONENTS



Chemical Injection Tool

Size	Part Code
Fits 380-410ml cartridge	0000.90.090



Stainless Steel Cleaner

Size	Part Code
400ml	0000.60.010



- Three accurately ground mounting surfaces for drilling holes at 90°.
- Precision ground jaws.

Press Vice

Part Code: **DPV100/3**

100mm 3 Way Drill Press Vice	
Capacity	85mm
Width	100mm



Wedge Removal Kit

Size	Part Code
15.5-25.5mm	0000.90.080

We also rent out wedge removal kits. Please contact us for more details.



- A versatile three-speed machine offering horizontal and vertical cutting capabilities.
- The 350W motor gives smooth and accurate saw blade transmission through the adjustable ball bearing guides.
- Supplied complete with transport wheels, tool shelf, plastic blade guards and BS safety regulation guard.

Cutting Saw

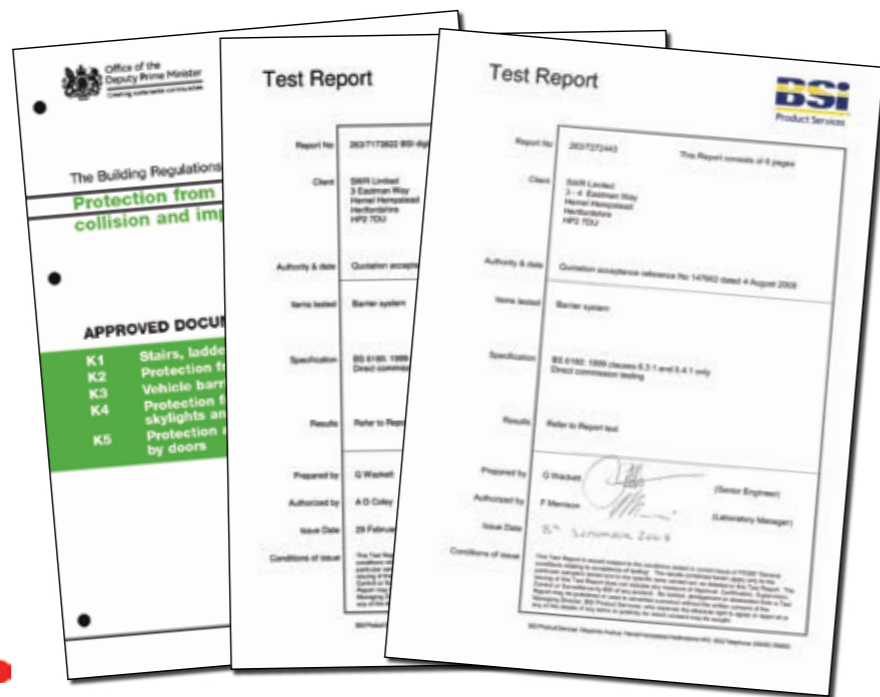
Part Code: **MBS46A**

230v Horizontal & Vertical Metal Cutting Bandsaw	
Cutting capacity	114mm round/100x150mm rectangular
Motor	350W induction
Blade length	1638mm
Vertical table size	254 x 250mm
Height to bed	591mm
Height to table	851mm
Speeds (rpm)	3 (65, 95, 165)
Weight	61kg



LOADING & BUILDING REGULATIONS

With any project the importance of safety has to be at the forefront of our minds when considering the most suitable balustrade system. With this mentality we work closely with our clients, providing advice on loading and dimensional specifications in line with The Building Regulations K2 Document. Our systems have been rigorously tested to BS 6180 and have been fully approved for residential and commercial projects.



CLEANING & MAINTENANCE

An important thing to remember with stainless steel is that it is stain 'less' and not stain 'free'. Stainless steel is not completely corrosion proof and does require on-going cleaning and maintenance. As members of the British Stainless Steel Association we advise all of our customers to carry out necessary maintenance on your system to help retain the modern finish of the product.

We supply our own cleaning product specifically designed for stainless steel. Our cleaner gives a sparkling appearance leaving a protective film to aid in future maintenance.



Stainless Steel Cleaner

Size	Part Code
400ml	0000.60.010

CUTTING, DRILLING & POLISHING SERVICE

SWR offer a full cutting, drilling and polishing service. Our CAD technicians provide our engineers with technical drawings of your system, designed to your specifications. Our highly skilled engineers then cut, drill and tap the balustrade accordingly.

During production of your system we take care to polish each tube giving it a smooth clean finish ready for on site assembly.

In line with our ISO 9001:2008 procedures we carry out rigorous checks throughout the production process to ensure ease of use and simple assembly when on site.

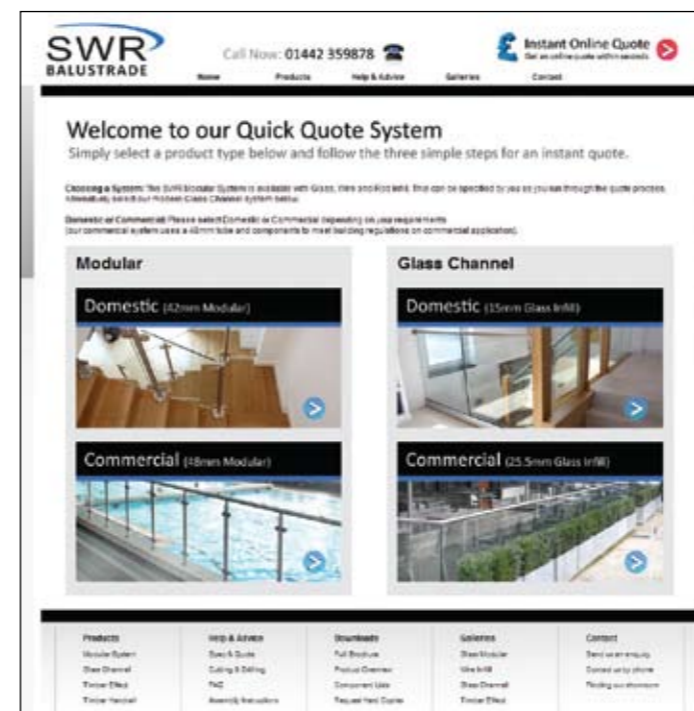
For your convenience on site we work to package each part so that all are marked up clearly and can be easily identified when unpacking and preparing to start the job. It's the small details that make the difference and ultimately help you to safely and efficiently install your balustrade system.



INSTANT ONLINE QUOTE

SWR also provide a Quick Quote System so that you can get a guide price online. Simply select the product type that you are interested in, followed by the estimated length of system and the number of bends/corners, and you'll receive an instant quote. This process is fast and easy to use.

Visit: www.swr-balustrade.co.uk/quote



STAINLESS STEEL WIRE ROPE & COMPONENTS

Fully tested stainless steel wire rope and fittings for marine, architectural and structural applications.



To request a brochure call: **01442 353005**

1. GENERAL

1.1 All sales contracts of SWR Ltd. (herein referred to as "the Seller") shall be deemed to incorporate these conditions except in so far as these conditions are varied by any special conditions agreed in writing between the parties. Any terms and conditions in the purchase order which are inconsistent with these conditions shall have no effect.

2. CATALOGUES

2.1 Catalogues, price lists and any advertising matter published by the Seller are intended only to give an indication of the general nature of the goods available and nothing contained in any such catalogue, list or other matter shall be or be deemed to be a representation by the Seller or a condition or warranty affecting any goods sold.

3. PRICES

3.1 Unless otherwise expressly stated all quotations shall be valid for a fixed period of 30 days only.

3.2 Unless otherwise expressly agreed in writing the price payable for all goods supplied by the Seller shall be the price ruling at the date of despatch plus value added tax thereon at the rate ruling at the date of despatch. All prices are subject to change.

4. PAYMENT

4.1 All goods shall be paid for in full by the Purchaser to the Seller at the time of ordering, by cash, cheque, credit card or finance.

4.2 Where account facilities apply, having been expressly agreed in writing by the Seller, the price shall be paid in full by the Purchaser to the Seller within 30 days of the date of the invoice.

4.3 For all installation products and services purchased a deposit (shown overleaf) is required. This is payable on order confirmation. The balance is payable after the products have been delivered. If the seller is responsible for installation, this balance will be payable once the installation is complete, unless a finance agreement is in place.

4.4 The Seller reserves the right to charge interest at a rate 5% above the Barclays Bank base rate from the date when the price falls due for payment until the date on which such payments are actually received by the Seller, and in the case of any default in payment the Purchaser shall give the Seller every assistance in the repossession of the goods in respect of which payment has not been made.

5.0 DOOR STEP SELLING - COOLING OFF PERIOD

5.1 For orders signed away from the sellers normal premises (i.e. orders placed at your home, place of work or other third party premises) under the doorstep selling regulations act you are entitled to a statutory 7 working days cooling off period - beginning from the date you place your order. Certain goods are exempt from this cooling off period, for example a special order or goods which are personalised or made to a personal specification

5.2 You must inform us in writing during the cooling off period that you are cancelling the order by sending the below notice of cancellation to SWR Ltd. See point 11 below.

5.3 If you have not received the goods at the time of cancellation of the contract and we have not processed the goods for delivery, we will refund to you all the monies paid by you for the goods in question in the same form of payment originally used for the purchase as soon as possible and in any event within 30 days of your cancellation being accepted.

5.4 If applicable any related credit agreements will automatically be cancelled if the order is cancelled within the cooling off period mentioned in point.

5.5 If you do not return the goods to us we shall be entitled to deduct the direct costs of recovering the goods from the amount to be refunded to you.

6. TRANSFER OF TITLE

6.1 Title to goods shall only pass to the Purchaser from the date of payment in full of all sums payable to the Seller under the contract by which those goods were supplied or any other contract. Until such time, goods remain the absolute property of the Seller and the Purchaser shall keep them insured to their full invoice value. Such goods shall be stored in such a way that they are readily identifiable and the Seller shall be entitled to repossess such goods at its entire discretion and at any time prior to payment in full therefore. The Purchaser hereby grants the Seller, its servants and agents a licence to enter upon the Purchaser's premises for the purpose of repossessing the same. Such repossession shall not affect in any way the continued existence of any contract between the parties.

If goods in which title has not passed to the Purchaser are subjected to any process, addition or treatment, the property in the goods so processed, added to or treated, shall be vested in the Seller until title has passed.

6.2 All goods sold by the Purchaser to third parties before title has passed to the Purchaser, shall be sold as agent for the Seller and all proceeds received from such sales shall be held by the Purchaser in trust for the Seller, until payment in full of all amounts outstanding has been received by the Seller.

6.3 Notwithstanding that property in any goods has not passed to the Purchaser, the Seller shall be entitled to sue the Purchaser for the price of such goods if not paid on the due date.

7. DELIVERY

7.1 Any time for the delivery stated by the Seller will be an estimate only on the likely time required to effect delivery from the date of receipt by the Seller of full and final instructions. The Seller will make every reasonable effort to comply with such estimate but the Purchaser shall have no right to damages or to cancel any contract with the Seller by reason only of failure on the part of the Seller to meet any stated delivery time.

7.2 The Seller will endeavour to comply with reasonable requests by the Purchaser for postponement of any stated delivery date but shall be under no enforceable obligation to do so. In the event of any such postponement at the request of the Purchaser, the Purchaser shall pay to the Seller on demand all costs and expenses thereby incurred including a reasonable charge for storage thereby occasioned.

7.3 When the goods are sold "carriage paid" by the Seller, delivery shall be deemed to take place at the moment the goods are lifted from the delivery vehicle and thereafter the goods shall be at the risk of the Purchaser in all respects.

8. DAMAGE IN TRANSIT

8.1 No claim for goods damaged or lost in transit will be accepted by the Seller unless written notification of such damage or loss is given to the Seller by the Purchaser and the carrier within four working days of receipt of the goods by the Purchaser and all damaged goods are retained by the Purchaser pending inspection by the Seller and carrier.

9. LIABILITY

9.1 In placing an order with the Seller subject to these conditions the Purchaser is deemed to acknowledge that the Purchaser is not dealing as a consumer and that the provisions of these conditions restricting the liability of the Seller are (save as may be notified in writing by the Purchaser to the Seller before the time at which such order is accepted) fair and reasonable in the light of all circumstances then known to the Purchaser.

9.2 All goods supplied by the Seller are fit for the normal purpose for which such goods are intended. No liability is accepted if the goods are found not to be fit for any other purpose whether or not such other purpose was made known to the Seller before the contract was made. Any recommendations made by the Seller in such circumstances are made in good faith but as the conditions of use are outside the control of the Seller, it is for the Purchaser to satisfy himself as to the suitability of the goods. Save as aforesaid any conditions or warranty implied or imposed by law as to the quality fitness for the purpose or otherwise however of any goods supplied by the Seller is hereby expressly excluded and in no circumstances (except death or injury caused by the Seller's negligence) shall the Seller be liable for any loss injury or damage caused or arising whether in contract or in tort save as expressly provided and to the extent provided in this condition.

9.3 If any defect in workmanship or materials shall manifest itself in any goods supplied by the Seller within 12 months of the date of delivery thereof provided always that the goods shall have been found not to be to specification the Seller shall have the right at its sole discretion to replace free of cost to the Purchaser (other than the cost of carriage) any such goods or parts thereof and the Purchaser shall be obliged to accept such replacement in full satisfaction of its claim and shall also return to the Seller at the expense of the Purchaser the goods originally delivered or such defective part thereof as may have been replaced. If the Seller shall fail to replace such goods or parts thereof any amount recoverable by way of damages from the Seller by the Purchaser shall be limited to the difference between the value of the goods at the time of the delivery to the Purchaser and no claim whatever by the Purchaser shall entitle the Purchaser to withhold payment of the price of any goods or to any right of set-off against any payment due to the Seller under any contract made by the Seller and the Purchaser, nor will any claim made by the Purchaser entitle the Purchaser to reject any goods supplied and treat the contract as repudiated and any remedy of the Purchaser shall be in damages only as hereinafter provided.

9.4 The Seller shall be under no liability in respect of any defect arising from fair wear and tear, willful damage, negligence, abnormal working conditions, failure to follow the Sellers instructions, whether oral or in writing, misuse or alterations of the Goods without the Seller's approval.

9.5 Given the multitude of legislations, we cannot accept liability for the compliance of our products to local building regulations. We therefore would like to draw your attention to the fact that it is always the customer's responsibility for observing the existing legal regulations and advice should be sort from your local planning office.

10. FORCE MAJEURE

10.1 In the event of any act of God, outbreak of war either general or local, riot or other civil commotion, strike lock-out or act or decree of any government or any other matter or thing beyond reasonable control of the Seller, the Seller:

10.2 Shall not be liable for any injury or damage of any kind thereby caused or resulting therefrom; and

10.3 May at the sole discretion of the Seller withdraw wholly or in part from the contract without any liability whatsoever. The construction validity and performance of this contract shall be governed by the laws of England and all disputes which may arise under out of or in connection with or in relation to this contract shall be subject to the jurisdiction of the courts of England.



SWR Ltd, 3-4 Eastman Way,
Hemel Hempstead,
Herts HP2 7DU

TEL: **01442 359878**

FAX: **01442 259918**

www.swr-balustrade.co.uk
sales@swr-balustrade.co.uk

Version B13B.2